

Charming vacation rental Lisbon Charming Apartment

Charming Apartment with Large terrace over Tagus River in Lisbon Historic Center - Your Home at Chiado.



Charming Apartment 4nd floor, shared entrance, in(on) a(an) Restored apartment house/building 5 floors

Setting : enchanting, picturesque

Capacity : from 1 to 4 person(s)

Bedroom(s) : 2

Room(s) : 5

Lisbon - Lisbon District - Lisbon and Tagus Valley
Portugal

Advert No. 25852

www.iha.com



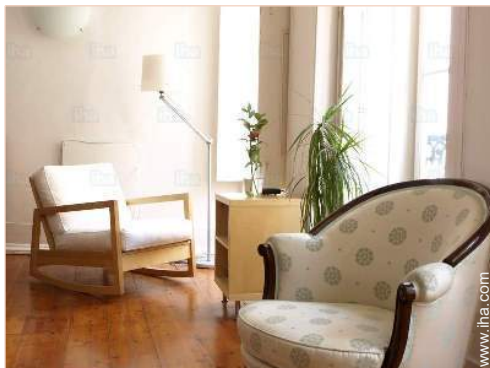
Charming vacation rental



Charming Apartment 4nd floor, shared entrance, in(on) a(an) Restored apartment house/building 5 floors

- **Ideal for all age groups, family**
- **View** : panoramic, unobscured, river, city, monument, nightlights
- **Setting** : enchanting, picturesque
- **Exposure** : South-west

" Bright Flat with Large Terrace and River Views, 2 Bedrooms, 3 Living room. This elegant, spacious and sunny apartment with a large terrace and extensive views over the old city and down to the harbour is located in one of historic Lisbon's most glamorous neighbourhoods – the Chiado. Natural sunlight thus floods the apartment in both morning and afternoon. The master bedroom has a double bed, while the second bedroom is provided with two single beds. Extra bed linen and towels are available. Baby bed, high chair and other child facilities can be provided on request at no extra charge. The kitchen is fully equipped and supplied with all the culinary basics (coffee, tea, sugar, olive oil, vinegar, salt, pepper and other spices, etc.). If you prefer not to use the cooker, you can always try the barbecue grill on the terrace (charcoal provided). "



view from the living room

Surroundings & location



City



Festival



Culture

" The Chiado has always been considered the noblest part of the city, with its quiet streets and squares lined with imposing mansions, museums, churches, art galleries, bookshops, and the odd government ministry. The nearby (less than a minute walk) Praça de Camões and Largo do Chiado (and its cafés Brasileira and Benard) are privileged meeting points for Lisboetas and tourists alike, who are drawn by the impressive concentration of theatres, exclusive shops and high quality restaurants. The 28 tram stops around the corner from the flat, and it is not much farther to the Bica cable-car (elevador) or the metro. A ten-minute walk down the hill brings you to the Cais do Sodre train station (Estoril-Cascais line) or the ferry for trips across the Tagus. "

Leisure

- **Leisure activities less than 12 miles :**

Bathing, sailing, golf, tennis, riding school, mountain bike (path), boat trips, fishing

- **Attractions and relaxation :**

Restaurant, park and garden, zoo/animal park, art gallery, historical site, museum, theater, opera house, festivals, antiques & bric-a-brac

Surroundings

- **Locality :**

Sea/ocean 6mi.
Sandy beach 4.5mi.
River 0.3mi.
Marina 1.25mi.



Interior layout and facilities



terrace

Charming vacation rental
Lisbon - Portugal
Charming Apartment

3

[Book now](#)



Outside setting

Exterior

- **Outside accommodation :**
Terrace 530 Sq.ft.
- **Outside amenities :**
BBQ, yard table(s), 4 yard seat(s), parasol, 2 chaise(s) longue(s)



Interior layout and facilities

Interior

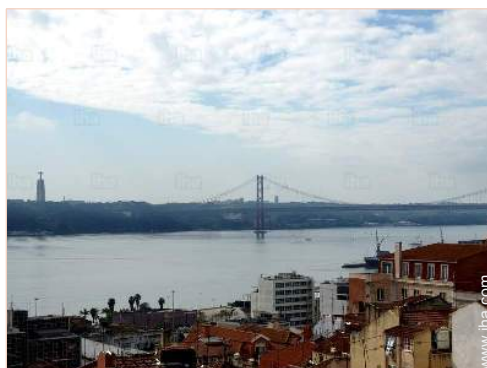
- **Receive up to :**
from 1 to 4 person(s)
- **Liveable floor area :**
1,300 Sq.ft.
- **Interior layout :**
5 Room(s), 2 bedroom(s), 1 bathroom, 1 shower room, living room, sitting room, separate kitchen, dining room
- **Sleeps - bed(s) :**
1 full bed(s), 2 twin bed(s)
- **Guest facilities :**
T.V., hi-fi system, DVD player, book collection, t.v points, cable/satelite, wifi, cupboard, hair dryer, electric heating
- **Appliances :**
Crockery/flatware, kitchen utensils, cafetiere, electric kettle, toaster, juicer, gaz stove, oven, micro-wave oven, refridgerator, deep freeze, washing machine, vacuum cleaner, iron, ironing board

Services

- **washing :**
Sheets, Towels, Linen, Comforter(s), Comforter(s), Pillows
- **Single family home :**
Cleaning on departure

For your guidance

- **For your guidance**
Kids welcome
Cell phone network coverage
Water : hot/cold
Local voltage supply : 220-240V / 50Hz



view from the terrace

Advert No. 25852

www.iha.com



>> VACATION HOMES

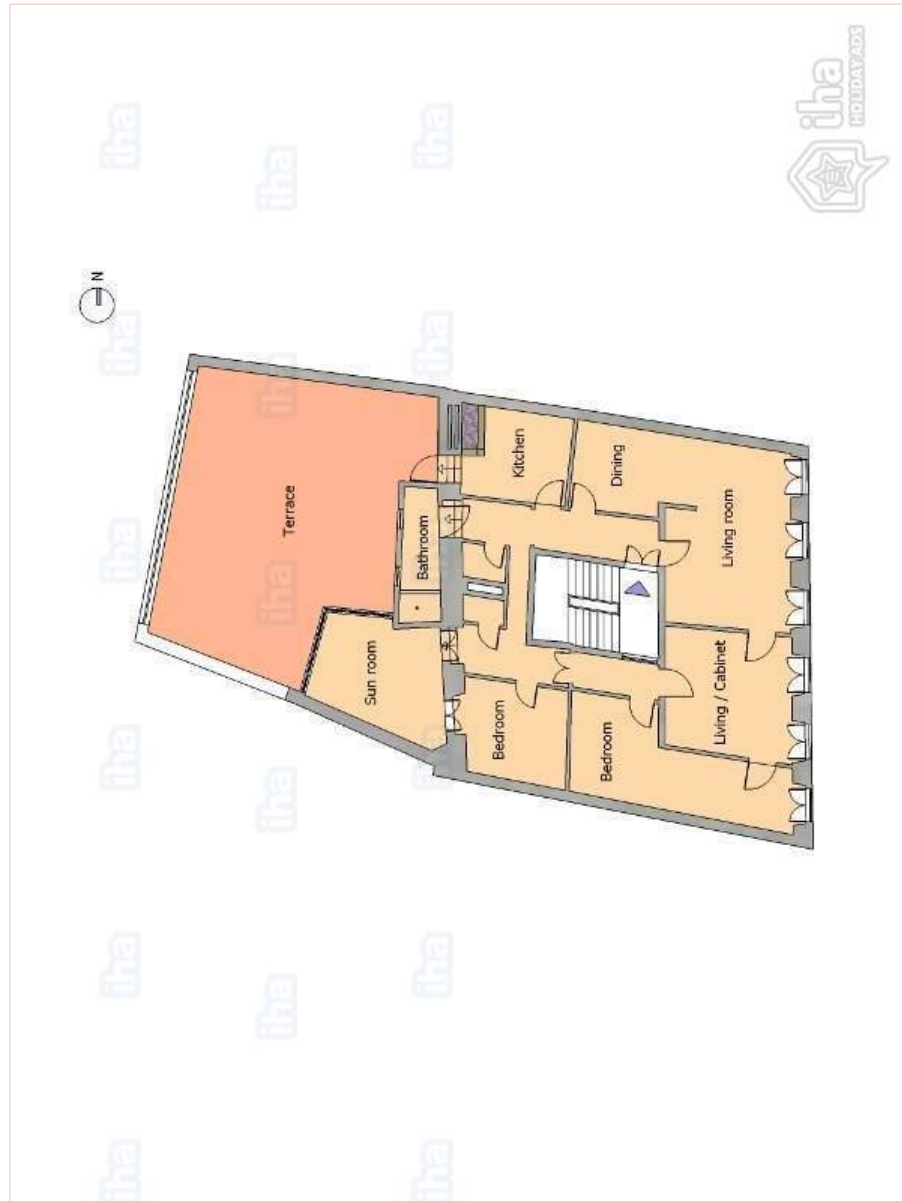
DIRECT BY OWNERS

Charming vacation rental
Lisbon and Tagus Valley - Lisbon
Charming Apartment

4

[Book now](#)

Floor plan



www.iha.com

Advert No. 25852

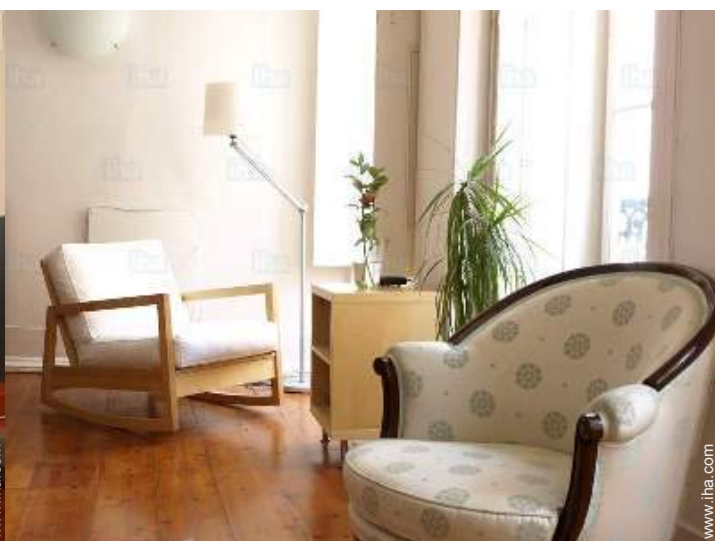
www.iha.com



>> VACATION HOMES

DIRECT BY OWNERS

Photo album - 1



view from the living room



terrace



Interior layout and facilities



Outside setting



view from the terrace

Photo album - 2



Interior layout and facilities



living room



Interior layout and facilities



master bedroom



full bed(s)



twin bed(s)

Photo album - 3



bathroom

bathroom



kitchen



Interior layout



dining room

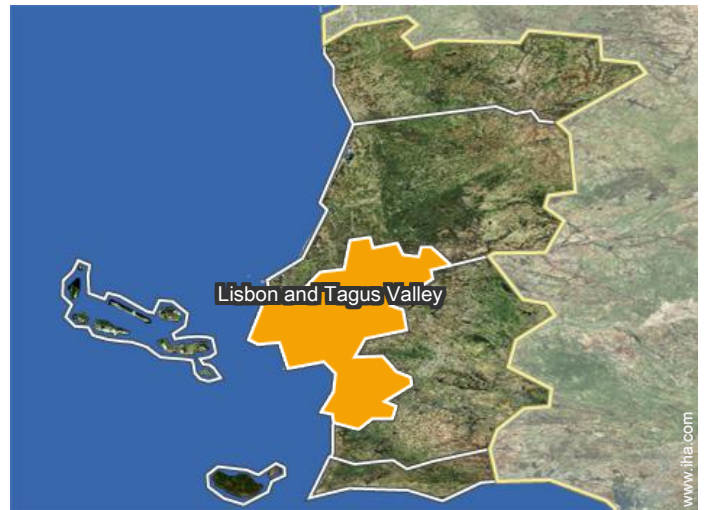
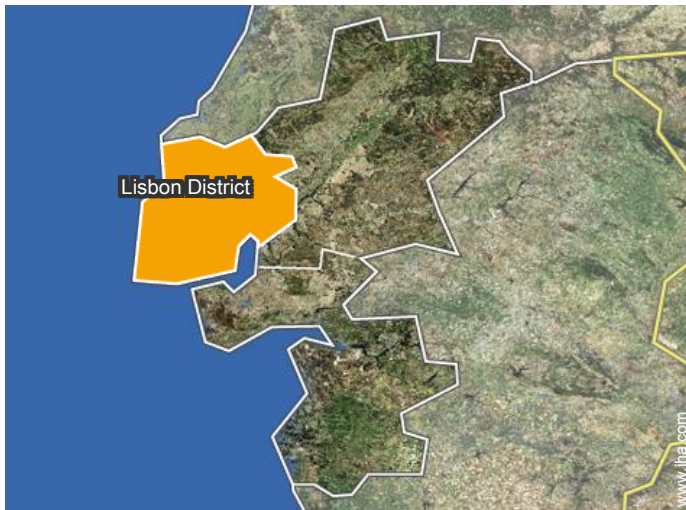


view from the living room



view from the terrace

Location



Location & Access

" Supermarket, grocer's, bakery, newsstand, cafés, hairdressers, banks, etc. are all very close indeed. Nearby is the Santa Catarina belvedere, with outstanding views over the harbour, while a short walk through Bairro Alto leads to the pretty Principe Real park, which has a play area for children. "



GPS coordinates in degrees, minutes, seconds: Latitude 38°42'37.3"N - Longitude 9°8'43.81"W ([Dwelling](#))

Address

→ rua das chagas 29 - 3°
1000 Lisbon

• Airport Lisbon Portela

→ Lisbon, Lisbon District, Lisbon and Tagus Valley, Portugal

→ Distance : 6mi.

→ Time : 15'

- Évora : (65mi.)
- Óbidos : (43,5mi.)
- Fátima : (68,5mi.)

Contact

Spoken languages



Charming vacation rental Lisbon - Portugal Charming Apartment

[Book now](#)

Availability calendar - from : september 2017

Sep	F	Sa	Su	M	Tu	W	Th	F	Sa	Su	M	Tu	W	Th	F	Sa	Su	M	Tu	W	Th	F	Sa							
2017	1	2	3	4	5	6	7	8	9	10	11	12	13	14	15	16	17	18	19	20	21	22	23	24	25	26	27	28	29	30

Oct	Su	M	Tu	W	Th	F	Sa	Su	M	Tu	W	Th	F	Sa	Su	M	Tu	W	Th	F	Sa	Su	M	Tu							
2017	1	2	3	4	5	6	7	8	9	10	11	12	13	14	15	16	17	18	19	20	21	22	23	24	25	26	27	28	29	30	31
	-	-	-	-	-	-	-	-	-	-	-	-	-	-	-	-	-	-	-	-	-	-	-	-	-	-	-	-	-	-	

Nov	W	Th	F	Sa	Su	M	Tu	W	Th	F	Sa	Su	M	Tu	W	Th	F	Sa	Su	M	Tu	W	Th							
2017	1	2	3	4	5	6	7	8	9	10	11	12	13	14	15	16	17	18	19	20	21	22	23	24	25	26	27	28	29	30
	-	-	-	-	-	-	-	-	-	-	-	-	-	-	-	-	-	-	-	-	-	-	-	-	-	-	-	-	-	-

Dec	F	Sa	Su	M	Tu	W	Th	F	Sa	Su	M	Tu	W	Th	F	Sa	Su	M	Tu	W	Th	F	Sa	Su							
2017	1	2	3	4	5	6	7	8	9	10	11	12	13	14	15	16	17	18	19	20	21	22	23	24	25	26	27	28	29	30	31
	-	-	-	-	-	-	-	-	-	-	-	-	-	-	-	-	-	-	-	-	-	-	-	-	-	-	-	-	-	-	

Jan	M	Tu	W	Th	F	Sa	Su	M	Tu	W	Th	F	Sa	Su	M	Tu	W	Th	F	Sa	Su	M	Tu	W							
2018	1	2	3	4	5	6	7	8	9	10	11	12	13	14	15	16	17	18	19	20	21	22	23	24	25	26	27	28	29	30	31
	-	-	-	-	-	-	-	-	-	-	-	-	-	-	-	-	-	-	-	-	-	-	-	-	-	-	-	-	-	-	

Feb	Th	F	Sa	Su	M	Tu	W	Th	F	Sa	Su	M	Tu	W	Th	F	Sa	Su	M	Tu	W							
2018	1	2	3	4	5	6	7	8	9	10	11	12	13	14	15	16	17	18	19	20	21	22	23	24	25	26	27	28
	-	-	-	-	-	-	-	-	-	-	-	-	-	-	-	-	-	-	-	-	-	-	-	-	-	-	-	-

Mar	Th	F	Sa	Su	M	Tu	W	Th	F	Sa	Su	M	Tu	W	Th	F	Sa	Su	M	Tu	W	Th	F	Sa							
2018	1	2	3	4	5	6	7	8	9	10	11	12	13	14	15	16	17	18	19	20	21	22	23	24	25	26	27	28	29	30	31
	-	-	-	-	-	-	-	-	-	-	-	-	-	-	-	-	-	-	-	-	-	-	-	-	-	-	-	-	-	-	

Apr	Su	M	Tu	W	Th	F	Sa	Su	M	Tu	W	Th	F	Sa	Su	M	Tu	W	Th	F	Sa	Su	M							
2018	1	2	3	4	5	6	7	8	9	10	11	12	13	14	15	16	17	18	19	20	21	22	23	24	25	26	27	28	29	30
	-	-	-	-	-	-	-	-	-	-	-	-	-	-	-	-	-	-	-	-	-	-	-	-	-	-	-	-	-	-

May	Tu	W	Th	F	Sa	Su	M	Tu	W	Th	F	Sa	Su	M	Tu	W	Th	F	Sa	Su	M	Tu	W	Th							
2018	1	2	3	4	5	6	7	8	9	10	11	12	13	14	15	16	17	18	19	20	21	22	23	24	25	26	27	28	29	30	31
	-	-	-	-	-	-	-	-	-	-	-	-	-	-	-	-	-	-	-	-	-	-	-	-	-	-	-	-	-	-	

June	F	Sa	Su	M	Tu	W	Th	F	Sa	Su	M	Tu	W	Th	F	Sa	Su	M	Tu	W	Th	F	Sa							
2018	1	2	3	4	5	6	7	8	9	10	11	12	13	14	15	16	17	18	19	20	21	22	23	24	25	26	27	28	29	30
	-	-	-	-	-	-	-	-	-	-	-	-	-	-	-	-	-	-	-	-	-	-	-	-	-	-	-	-	-	-

Reserved
 Mid season
 Low season
 Festive specials



Charming vacation rental Lisbon and Tagus Valley - Lisbon Charming Apartment

10
[Book now](#)

Availability calendar - from : june 2018

Jul	Su	M	Tu	W	Th	F	Sa	Su	M	Tu	W	Th	F	Sa	Su	M	Tu	W	Th	F	Sa	Su	M	Tu							
2018	1	2	3	4	5	6	7	8	9	10	11	12	13	14	15	16	17	18	19	20	21	22	23	24	25	26	27	28	29	30	31

Aug	W	Th	F	Sa	Su	M	Tu	W	Th	F	Sa	Su	M	Tu	W	Th	F	Sa	Su	M	Tu	W	Th	F							
2018	1	2	3	4	5	6	7	8	9	10	11	12	13	14	15	16	17	18	19	20	21	22	23	24	25	26	27	28	29	30	31

Reserved
 Mid season
 Low season
 Festive specials

[Month : Next >>](#)

Rental rates - Charming Apartment - from 1 to 4 Person(s)

Rates	Night	Weekend	week	2 weeks	Month
■ Low season	\$82* > 3	\$106*	\$563*	-	-
■ Mid season	\$117* > 3	\$129*	\$704*	-	-
■ High season	\$141*	\$152*	-	-	-
■ Festive specials	\$141*	-	-	-	-

> Minimum Night

[Book now](#)

Booking conditions

• Reservation

→ Payment made upon reservation :
30% of rental sum
→ Payment balance :
on handing over the keys

• rentals

→ Service charges included
→ Day tax included
→ Cleaning charge on departure included

[▶ Book now](#)

[▶ Contact the owner](#)

Accepted methods of payment

• Bank transfer (wire) • PayPal • Cash

Contact directly the property owners

www.iha.com
Advert No.
25852
>> Book now <<

Contact

Spoken languages



* Converted at the rate indicated : €100 = \$117.29 = £89.59

Advert No. 25852

www.iha.com

