

Charming vacation rental Lyon 5th district "Vieux Lyon Fourviere"

Beautiful apartment with panoramic view on the mountain of the Alps and the city of Lyon. At the centre of the Vieux Lyon (historic district).



Charming Apartment 2nd floor, separate entrance, in(on) a(an) Restored apartment house/building 5 floors

Setting : historical, urban

Capacity : from 1 to 5 person(s)

Bedroom(s) : 2

Room(s) : 3



Meublés de Tourisme (3 stars)

Lyon 5th district - Rhône (69) - Rhône Alpes

France

Reservation : +33 (0) 611734781 (France)



Advert No. 32776

www.iha.com



>> VACATION HOMES

DIRECT BY OWNERS

Charming vacation rental



Charming Apartment 2nd floor, separate entrance, in(on) a(an) Restored apartment house/building 5 floors

- **Ideal for all age groups, family**
- **View** : panoramic, not overlooked, dominant, mountain, city, nightlights
- **Setting** : historical, urban
- **Exposure** : East

" This apartment of 80 m² can accommodate up to 4 or 5 people. It is located in an old building end XVIII °, unopposed, with views overlooking the city of Lyon and the Alps mountain range. At the centre of the Vieux Lyon (historic district), it consists of several rooms 2 rooms, which one in mezzanine (very intimate), a dining - room 30 sqm living room, with a kitchen open to the living room, all these pieces have an old style, with French ceiling, wall stone, former Prosecutor. You have nevertheless all equip it and modern comforts: washing machine, dryer, dishwasher, microwave, Nespresso coffee machine, TV, the internet by optical fiber high speed & WIFI. "



view from the living room

Surroundings & location



City

" You are situated within walking distance (12 minutes walk) Centre City shopping of the peninsula or you can make your shopping and errands. You are 2 minutes walk from the centre of the old city said Vieux Lyon (historic district). You will have the opportunity to visit the museums of the city, go bowling, at the rink, run along the banks of the Saône and Rhône rivers, or even ride a bike with bike ' v (bike made available with stations to bike throughout the city). "

Leisure

- **Leisure activities less than 12 miles** :
Bathing, golf, squash, skate board (ramps)

Surroundings



view from the apartment



sitting room



sitting room

Interior

- **Receive up to :**
from 1 to 5 person(s) (5 adults)
- **Liveable floor area :**
860 Sq.ft.
- **Interior layout :**
3 Room(s), 2 bedroom(s), 1 bathroom, 1 toilets, living room 323 Sq.ft., sitting room, separate kitchen
- **Sleeps - bed(s) :**
1 full bed(s), 1 queen-size bed(s), 1 possible extra bed(s)
- **Guest facilities :**
T.V., DVD player, cable/satellite, wifi, hair dryer, heated towel rail, mobile cool air fan, central heating, Double glazed, digipad entry system
- **Appliances :**
Crockery/flatware, kitchen utensils, cafetiere, electric coffee maker, electric espresso coffee maker, toaster, juicer, food processor, pancake maker, electric raclette set, electric hobs, oven, extractor hood, refridgerator, dish washer, washing machine, clothes dryer, vacuum cleaner, iron, ironing board

Exterior

- **Outside accommodation :**
Terrace 110 Sq.ft.
- **Outside amenities :**
Yard table(s)



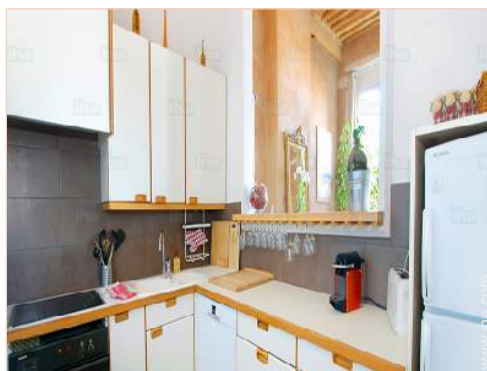
master bedroom

Services

- **washing :**
Sheets, Towels, Linen, Comforter(s), Pillows
- **Single family home :**
Cleaning on departure

For your guidance

- **For your guidance**
Kids welcome
Non smoking rental



kitchen

Photo album - 1

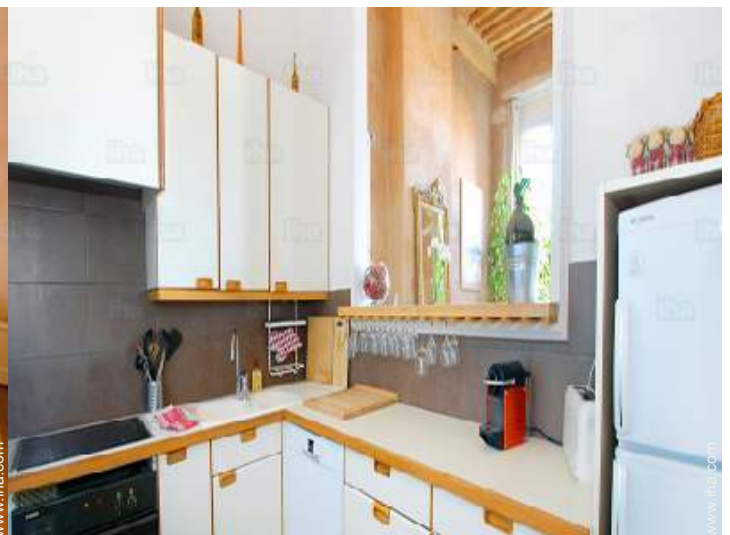


view from the living room



sitting room

view from the apartment



sitting room

kitchen

Photo album - 2



master bedroom



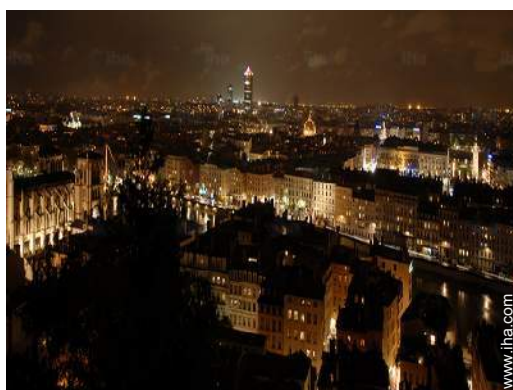
bedroom



living room



living room



easterly view

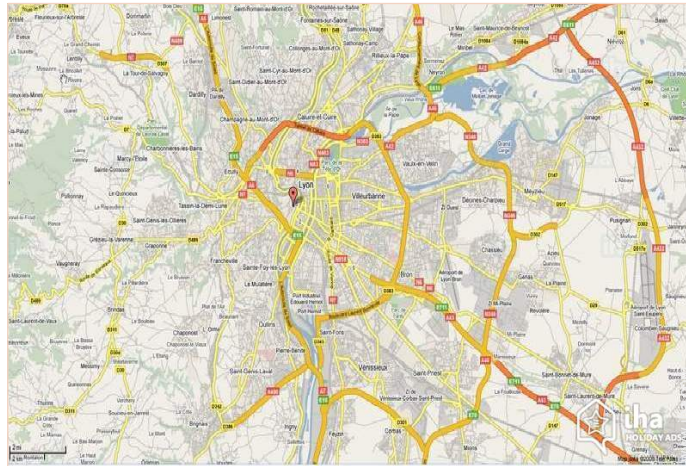


bathroom



terrace

Route map



Location & Access

" Accessible by car, by public transport (metro, bus, funicular railway), on foot. The situation of the apartment is pleasant to visit various places in the city, thanks to a proximity to the metro and funicular. "



GPS coordinates in degrees, minutes, seconds: Latitude 45° 45'34"N - Longitude 4° 49'27"E ([Dwelling](#))

Address

→ Montée du chemin neuf
69005 Lyon 5th district

• Airport Lyon St Exupery

→ Lyon, Rhône, Rhône Alpes, France
→ Distance : 7,5mi.
→ Time : 40'

• Railroad station Lyon Part Dieu

→ Lyon, Rhône, Rhône Alpes, France
→ Distance : 1.85mi.
→ Time : 20'

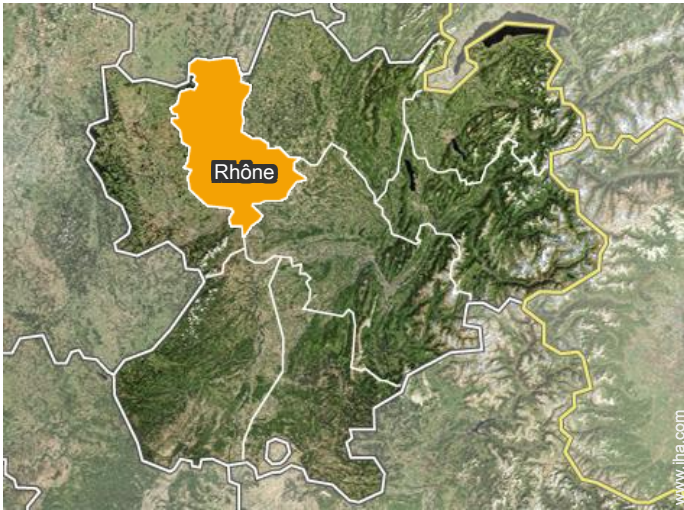
- Geneva : (87mi.)
- Paris : (>186mi.)
- Marseille : (>186mi.)

Contact

Spoken languages



Location



Charming vacation rental
Rhône - Rhône Alpes
"Vieux Lyon Fourviere"

8

[Book now](#)

Rental rates - Charming Apartment - from 1 to 5 Person(s)

| Rates | Night | Weekend | week | 2 weeks | Month |
|-------------------------------------|-------|---------|--------|---------|---------|
| <input type="checkbox"/> Mid season | - | - | \$841* | \$1589* | \$3272* |

[Book now](#)



view from the living room

sitting room

Accepted methods of payment

- International Money Order
- Bank transfer (wire)
- Cash

[▶ Book now](#)

[▶ Contact the owner](#)

Contact directly the property owners

www.ihacom
Advert No.
32776
[>> Book now <<](#)

Contact

Spoken languages



* Converted at the rate indicated : €100 = \$116.85 = £89

Advert No. 32776

www.ihacom

