

# Charming vacation rental Neustift im Stubaital "Ferienwohnung Span"

House located in a beautiful and quiet location in the village of Milders, 2 km into the Valley from the village centre Neustift located near a branch.



**Charming Apartment** first floor, shared entrance, in(on) a(an) Charming House 3 floors

Setting : mountainy, sporty

Capacity : from 2 to 4 person(s)

Bedroom(s) : 2

Room(s) : 2

Neustift im Stubaital - Tyrol

Austria

Advert No. 25662

Reservation : +43 (0) 522562019 (Austria)

www.iha.com



### Charming vacation rental



Charming Apartment first floor, shared entrance, in(on) a(an) Charming House 3 floors

- **Ideal for all age groups, sporty types**
- **View :** mountain, country side, village
- **Setting :** mountainy, sporty
- **Exposure :** East

"The apartment is ca. 65 square meters large and is located on the ground floor. It consists of a kitchen-living room, kitchen, dining area, couch, 2 four bed rooms with washbasin (1 double - 1 bunk bed) shower with 2 washbasins, separate toilet, vestibule. The apartments are comfortable and fully equipped. Electric cooker, oven, extractor, dishwasher, fridge, microwave oven, coffee machine, kettle, cooking and dinnerware, color TV with cable channels, radio, dishes and towels, bedding, safe, Internet (W-LAN)."

### Assets

- **Parking :**  
Parking uncovered : 2 off road.
- **Advantages :**  
Ski locker, ski boot warmer



Kitchen Area

### Surroundings & location



Mountain



Ski

"The Stubai Valley is located near the Tyrolean capital of Innsbruck - directly on the Brenner motorway. Despite this extremely convenient location, the Valley has retained its picturesque authenticity. 35 km away, the Stubai Alps stretches with their 80 glaciers and 109 mountains deep in the overwhelmingly beautiful mountains. Highest and most famous mountain in a series of impressive Giants is the Zuckerhütl 3.507 m. Generous bypasses bring an atmosphere of tranquility and close bond with nature - the five main cities of Schönberg, Mieders, Telfes, Fulpmes and Neustift ideal, to enjoy the splendid panorama and the unparalleled leisure opportunities to the best."

#### Leisure

- **Leisure activities less than 12 miles :**

Alpine skiing, cross-country skiing, off-piste skiing, ski-trekking, Télémark skiing, snowboarding, luge (run), ice-skating, bathing, golf, tennis, coastal/forest paths, hiking, rappel, rock climbing, kite flying, hang-gliding, paragliding, horse-drawn carriage, mini-golf

- **Supervised :**

Ski school, tennis school

- **Attractions and relaxation :**

Restaurant, theater, sauna

#### Surroundings

- **Locality :**

Ski slopes 1.85mi.  
Ski lifts 1.85mi.  
Ice skating rink 1.85mi.  
Heated swimming pool 1.5mi.  
Public swimming pool 1.5mi.  
Forest 660'

- **Amenities :**

Village center 1.5mi.  
Downtown 1.5mi.  
Bus stop / bus station 990'  
Ski bus pick up point 990'  
Ski hire store 990'  
Breadstore 1.5mi.  
Caterer 1.5mi.  
Local stores 990'  
Supermarket 1.5mi.  
Hairdressing salon 1.25mi.  
Mail office 1.5mi.  
Bank 1.5mi.  
ATM 660'  
Drugstore 1.5mi.  
Doctor 1.5mi.  
Hospital 15.5mi.  
Dispensary 4.5mi.



master bedroom



interior

### Interior

- **Receive up to :**  
from 2 to 4 person(s) (4 adults)
- **Liveable floor area :**  
700 Sq.ft.
- **Interior layout :**  
2 Room(s), 2 bedroom(s), 1 bathroom, 1 toilets
- **Sleeps - bed(s) :**  
2 full bed(s), 2 bunk beds
- **Guest facilities :**  
T.V., cable/satelite, wifi, wardrobe, Hanging wardrobe, central heating, Drapes, Blinds, entry phone system, digipad entry system
- **Appliances :**  
Crockery/flatware, kitchen utensils, cafetiere, electric coffee maker, electric kettle, electric stove, extractor hood, refridgerator, dish washer, vacuum cleaner

### Exterior

- **Outside accommodation :**  
Terrace 55 Sq.ft.

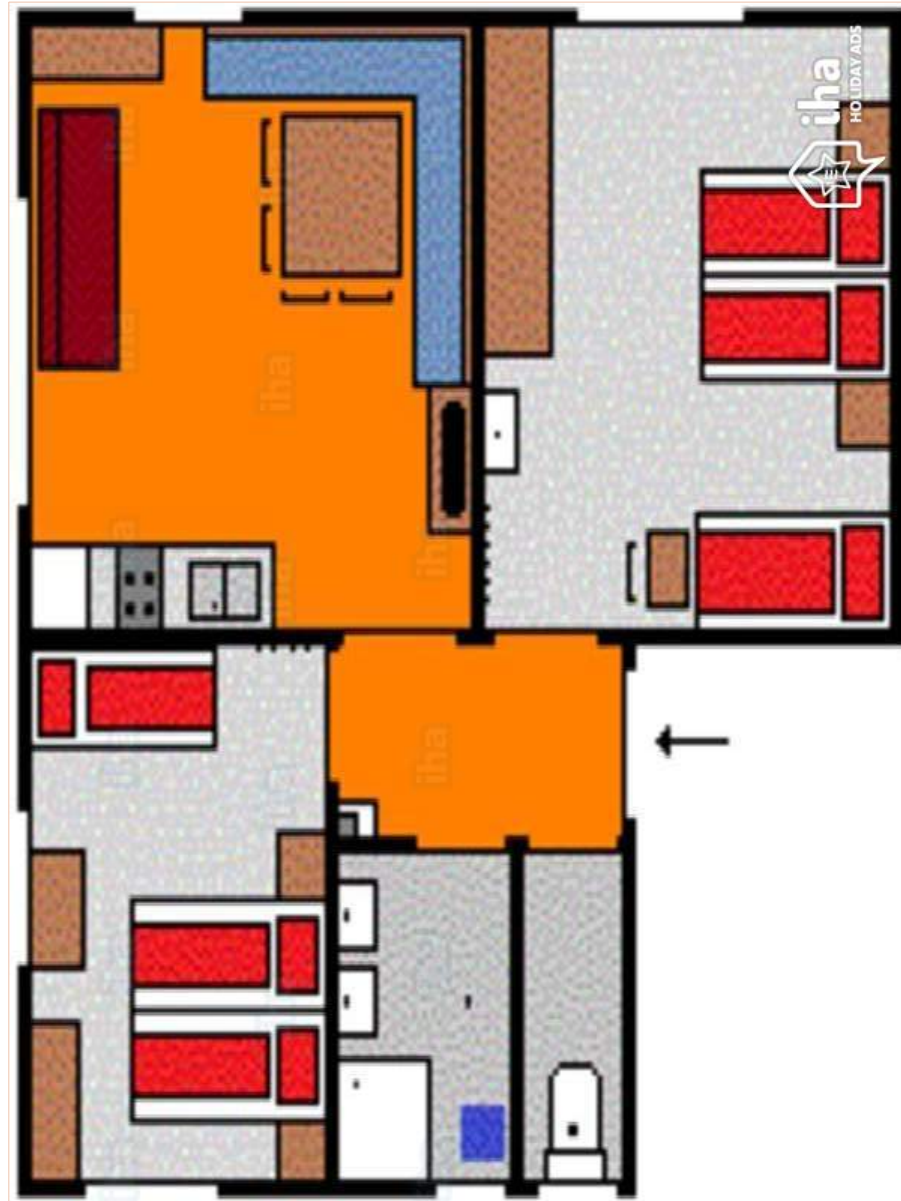
### Services

- **washing :**  
Sheets (1 X / per week), Towels (2 X / per week), Linen (1 X / per week), Comforter(s) (1 X / per week), Comforter(s) (1 X / per week), Pillows (1 X / per week)
- **Single family home :**  
Cleaning on departure supplement (+\$53\*), Snow clearance, Parking

### For your guidance

- **For your guidance**  
Kids welcome  
No pet allowed  
Non smoking rental, cell phone network coverage, personal transport advisable  
Water : hot/cold  
Local voltage supply : 220-240V / 50Hz  
Electricity supply : mains

Floor plan



www.ihh.com



Photo album - 1



Kitchen Area



interior



master bedroom



[Favourite photo gallery - 1](#)



Aug 2016



Aug 2016



Aug 2016



Jul 2016



Jan 2017



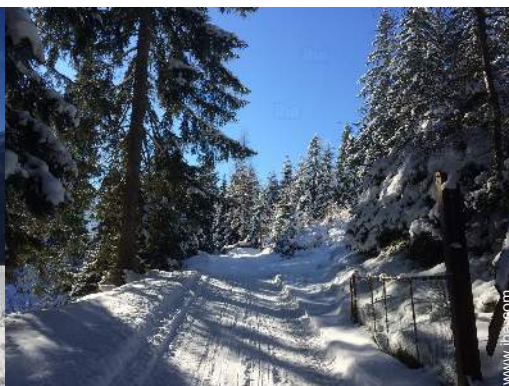
Jan 2017



[Favourite photo gallery - 2](#)



Jan 2017



Jan 2017



Mar 2019



Mar 2019



Mar 2019



Mar 2019



Mar 2019



Mar 2019

## Route map



## Location & Access

" Our House is situated 2 km into the Valley from the village centre of Neustift. In Milters bus station, turn Milters bridge the first way (Mill Road) turn right and after about 150 m, you will see our House on the left side. "



GPS coordinates in degrees, minutes, seconds: Latitude 47° 6'5"N - Longitude 11° 16'60"E ([Dwelling](#))

### Address

→ Mühlenweg 25  
6167 Neustift im Stubaital

#### • Freeway (exit) A 13

→ Schönberg im Stubaital, Tyrol, Austria  
→ Distance : 11,2mi.  
→ Time : 20'

#### • Airport Innsbruck Kranebitten

→ Innsbruck, Tyrol, Austria  
→ Distance : 16,8mi.  
→ Time : 30'

#### • Railroad station Innsbruck Hauptbahnhof

→ Innsbruck, Tyrol, Austria  
→ Distance : 17,5mi.  
→ Time : 30'

#### • Innsbruck : (17,5mi.)

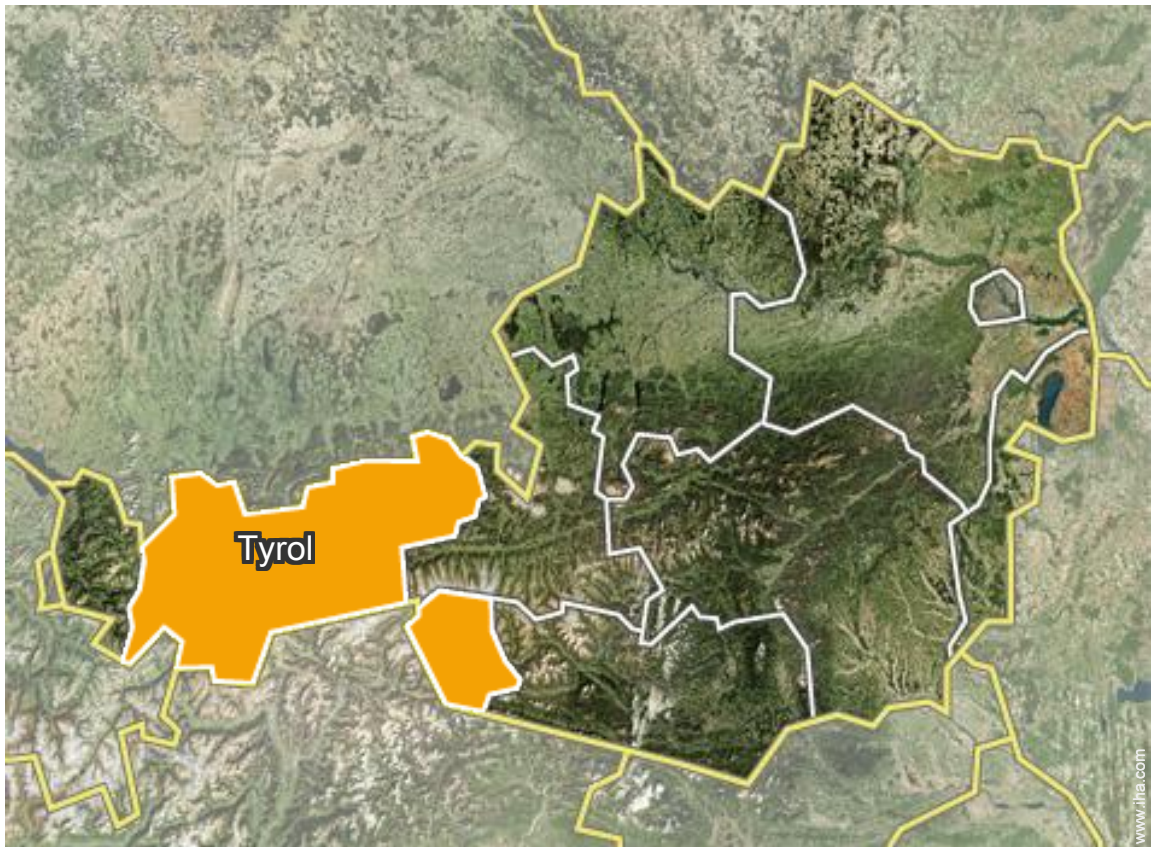
## Contact

Spoken languages





Location



Charming vacation rental  
Neustift im Stubaital - Austria  
"Ferienwohnung Span"

10  
[Book now](#)

Availability calendar - from : march 2019

Mar	F	Sa	Su	M	Tu	W	Th	F	Sa	Su	M	Tu	W	Th	F	Sa	Su	M	Tu	W	Th	F	Sa	Su							
2019	1	2	3	4	5	6	7	8	9	10	11	12	13	14	15	16	17	18	19	20	21	22	23	24	25	26	27	28	29	30	31
																							-	-	-	-	-	-	-	-	-

Apr	M	Tu	W	Th	F	Sa	Su	M	Tu	W	Th	F	Sa	Su	M	Tu	W	Th	F	Sa	Su	M	Tu							
2019	1	2	3	4	5	6	7	8	9	10	11	12	13	14	15	16	17	18	19	20	21	22	23	24	25	26	27	28	29	30
	-	-	-	-	-	-	-	-	-	-	-	-	-	-	-	-	-	-	-	-	-	-	-	-	-	-	-	-	-	-

May	W	Th	F	Sa	Su	M	Tu	W	Th	F	Sa	Su	M	Tu	W	Th	F	Sa	Su	M	Tu	W	Th	F							
2019	1	2	3	4	5	6	7	8	9	10	11	12	13	14	15	16	17	18	19	20	21	22	23	24	25	26	27	28	29	30	31
	-	-	-	-	-	-	-	-	-	-	-	-	-	-	-	-	-	-	-	-	-	-	-	-	-	-	-	-	-	-	

June	Sa	Su	M	Tu	W	Th	F	Sa	Su	M	Tu	W	Th	F	Sa	Su	M	Tu	W	Th	F	Sa	Su							
2019	1	2	3	4	5	6	7	8	9	10	11	12	13	14	15	16	17	18	19	20	21	22	23	24	25	26	27	28	29	30
	-	-	-	-	-	-	-	-	-	-	-	-	-	-	-	-	-	-	-	-	-	-	-	-	-	-	-	-	-	-

Jul	M	Tu	W	Th	F	Sa	Su	M	Tu	W	Th	F	Sa	Su	M	Tu	W	Th	F	Sa	Su	M	Tu	W							
2019	1	2	3	4	5	6	7	8	9	10	11	12	13	14	15	16	17	18	19	20	21	22	23	24	25	26	27	28	29	30	31
	-	-	-	-	-	-	-	-	-	-	-	-	-	-	-	-	-	-	-	-	-	-	-	-	-	-	-	-	-	-	

Aug	Th	F	Sa	Su	M	Tu	W	Th	F	Sa	Su	M	Tu	W	Th	F	Sa	Su	M	Tu	W	Th	F	Sa							
2019	1	2	3	4	5	6	7	8	9	10	11	12	13	14	15	16	17	18	19	20	21	22	23	24	25	26	27	28	29	30	31
	-	-	-	-	-	-	-	-	-	-	-	-	-	-	-	-	-	-	-	-	-	-	-	-	-	-	-	-	-	-	

Sep	Su	M	Tu	W	Th	F	Sa	Su	M	Tu	W	Th	F	Sa	Su	M	Tu	W	Th	F	Sa	Su	M							
2019	1	2	3	4	5	6	7	8	9	10	11	12	13	14	15	16	17	18	19	20	21	22	23	24	25	26	27	28	29	30
	-	-	-	-	-	-	-	-	-	-	-	-	-	-	-	-	-	-	-	-	-	-	-	-	-	-	-	-	-	-

Oct	Tu	W	Th	F	Sa	Su	M	Tu	W	Th	F	Sa	Su	M	Tu	W	Th	F	Sa	Su	M	Tu	W	Th							
2019	1	2	3	4	5	6	7	8	9	10	11	12	13	14	15	16	17	18	19	20	21	22	23	24	25	26	27	28	29	30	31
	-	-	-	-	-	-	-	-	-	-	-	-	-	-	-	-	-	-	-	-	-	-	-	-	-	-	-	-	-	-	

Nov	F	Sa	Su	M	Tu	W	Th	F	Sa	Su	M	Tu	W	Th	F	Sa	Su	M	Tu	W	Th	F	Sa							
2019	1	2	3	4	5	6	7	8	9	10	11	12	13	14	15	16	17	18	19	20	21	22	23	24	25	26	27	28	29	30
	-	-	-	-	-	-	-	-	-	-	-	-	-	-	-	-	-	-	-	-	-	-	-	-	-	-	-	-	-	-

Dec	Su	M	Tu	W	Th	F	Sa	Su	M	Tu	W	Th	F	Sa	Su	M	Tu	W	Th	F	Sa	Su	M	Tu							
2019	1	2	3	4	5	6	7	8	9	10	11	12	13	14	15	16	17	18	19	20	21	22	23	24	25	26	27	28	29	30	31
	-	-	-	-	-	-	-	-	-	-	-	-	-	-	-	-	-	-	-	-	-	-	-	-	-	-	-	-	-	-	

Mid season
  High season
  Low season
  Promotional period





Charming vacation rental  
Tyrol - Neustift im Stubaital  
"Ferienwohnung Span"

11  
[Book now](#)

Availability calendar - from : december 2019

Jan	W	Th	F	Sa	Su	M	Tu	W	Th	F	Sa	Su	M	Tu	W	Th	F	Sa	Su	M	Tu	W	Th	F							
2020	1	2	3	4	5	6	7	8	9	10	11	12	13	14	15	16	17	18	19	20	21	22	23	24	25	26	27	28	29	30	31

Feb	Sa	Su	M	Tu	W	Th	F	Sa	Su	M	Tu	W	Th	F	Sa	Su	M	Tu	W	Th	F	Sa							
2020	1	2	3	4	5	6	7	8	9	10	11	12	13	14	15	16	17	18	19	20	21	22	23	24	25	26	27	28	29

■ Mid season     
 ■ High season     
 ■ Low season     
 ■ Promotional period

[Month : Next >>](#)

Rental rates - Charming Apartment - from 2 to 4 Person(s)

Rates	Night	Weekend	week	2 weeks	Month
<span style="color: #90EE90;">■</span> Low season	-	-	\$532*	-	-
<span style="color: #ADD8E6;">■</span> Mid season	-	-	\$900*	-	-
<span style="color: #FF6347;">■</span> High season	-	-	\$1022*	-	-
<span style="color: #FFD700;">■</span> Promotional period	-	-	\$654*	-	-

[Book now](#)

Booking conditions

• **Reservation**

→ Payment made upon reservation : \$234\*  
→ Payment balance :  
on handing over the keys

• **rentals**

→ Day tax in addition  
→ Cleaning charge levy on departure : \$58\*

[▶ Book now](#)

Accepted methods of payment

• Bank transfer (wire) • Cash

[▶ Contact the owner](#)

Contact directly the property owners

[www.iha.com](http://www.iha.com)  
Advert No.  
25662  
[>> Book now <<](#)

Contact

Spoken languages



\* Converted at the rate indicated : €100 = \$116.85 = £89

Advert No. 25662

[www.iha.com](http://www.iha.com)

