

Charming vacation rental Ostende "Florivan"

In this cozy cottage with all the comforts to make you feel immediately at home! The owner is available to you for questions personally!



Charming Duplex Apartment first floor, separate entrance, in(on) a(an) Charming House single storey

Setting : ocean

Capacity : from 1 to 5 person(s)

Bedroom(s) : 2

Room(s) : 3



Charmance ()
Meublés de Tourisme (3 stars)



Theme breaks
Nature discovery

Ostende - West Flanders - Flanders

Belgium

Advert No. 3231

www.iha.com



Charming vacation rental



Charming Duplex Apartment first floor, separate entrance, in(on) a(an) Charming House single storey

- **Ideal for all age groups**
- **View :** sea/ocean, garden/park, city, street/avenue
- **Setting :** ocean
- **Exposure :** South-east

" Extras: digital tv and free internet access (wifi). Board games and read books in several languages. Kitchen fully equipped with generous amenities and even herbs. Tea and coffee service upon arrival. Washing machine on request. No parking problems: free car parking in front of or close to the House. In the Mediterranean garden with covered terrace you can enjoy a breakfast or a social gathering. The cottage is child-friendly decorated. Free baby cot and Chair. Pets welcome. Use of bed linen and towels (bath and kitchen) are included in the rental price. "

Assets

- **Parking :**
Parking uncovered
- **baby equipment :**
High chair, baby potty

Surroundings & location



" Ostend (Oostende): a port city with a glorious history and five beautiful beaches: the East Beach, the small beach, the large beach, the Mariakerkestrand and the Raversijdestrand. Especially suited for children. For them there is a special events guide "Oostende Ahoi" available at Tourism Ostend. Several points of interest. You can visit on your own using the Guidebook ' Alle 13 goed '. 1. Historical Museum De Plate, 2. James Ensorhuis, 3. Prins Karel Memorial, 4. the Atlantic wall, 5. Museum of Walraversijde, 6. Fort Napoleon, 7. the Japanese garden, 8. the three-master Mercator, 9. Museum of modern art, 10. Museum of fine arts, 11. Amandine (the last Iceland fishing boat of Ostend), 12. St. Peter's Tower, 13. The Peter and Paul church with the tomb of the first Queen of Belgium. Be sure to visit the surrounding polders, the picturesque village of Stene and the beautiful cities of Diksmuide and Veurne. "

Leisure

- **Leisure activities less than 12 miles :**

Bathing, scuba diving, windsurfing, sailing, kite surfing, golf, tennis, riding school, pathway/broadwalk, coastal/forest paths, hiking, mountain bike (path), kite flying, flying (club), boat trips, horse trekking, mini-golf, skate board (ramps), go-karting, ten-pin bowling, paintball, fishing, fishing, pétanque field

- **Attractions and relaxation :**

Restaurant, movie theater, park and garden, nature reserve, exhibition center, art gallery, historical site, museum, theater, festivals, antiques & bric-a-brac, cellar and wine tasting, casino, race track, thermal baths, thalassotherapy center, sauna, steam baths, health spa, beauticians

Surroundings

- **Locality :**
Heated swimming pool 2.5mi.
Sea/ocean 0.5mi.
Sandy beach
Nudist beach 4.5mi.
Sea inlet 3mi.
Public swimming pool 2.5mi.
Public tennis court 1.25mi.
9 hole golf course 1.85mi.
18 hole golf course 6mi.
Windsurfing spots 1.85mi.
Forest 15.5mi.
Marina 2.5mi.

- **Amenities :**

Bus stop / bus station 660'
Streetcar system 0.3mi.
Breadstore 330'
Supermarket 330'
Bank 990'
ATM 990'
Drugstore 660'
Hospital 1.85mi.



kitchen



living room



separate kitchen

Exterior

- **Ground surface :**
2,150 Sq.ft.
- **Outside accommodation :**
Covered terrace 215 Sq.ft., sundeck 215 Sq.ft.
- **Outside setting :**
Private courtyard 323 Sq.ft., enclosed grounds 2,150 Sq.ft., yard 323 Sq.ft.
- **Outside amenities :**
Yard table(s), 4 yard seat(s)



bathroom

Interior

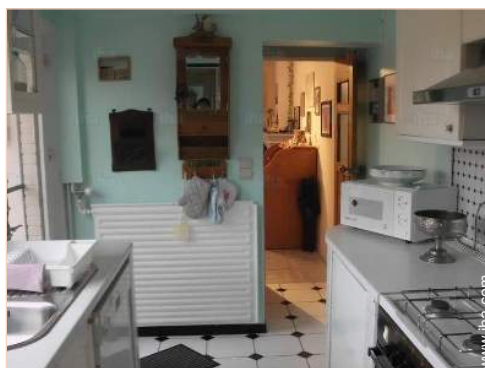
- **Receive up to :**
from 1 to 5 person(s) (4 adults, 1 kids)
- **Liveable floor area :**
650 Sq.ft.
- **Interior layout :**
3 Room(s), 2 bedroom(s), 1 bathroom, 1 shower room, 1 toilets, living room 215 Sq.ft., separate kitchen, dining area, veranda
- **Sleeps - bed(s) :**
1 full bed(s), 1 sleeper sofa(s) 2 pers, 2 twin bed(s), 1 baby cradle, 1 possible extra bed(s)
- **Guest facilities :**
T.V., hi-fi system, vcr, DVD player, board games, book collection, movie collection, cable/satelite, wifi, cupboard, hair dryer, power shower, fly screens, central heating, Drapes, Blinds, Double glazed, Rolling shutters, digipad entry system, fire alarm
- **Appliances :**
Crockery/flatware, kitchen utensils, cafetiere, electric coffee maker, electric kettle, toaster, juicer, gaz stove, oven, micro-wave oven, extractor hood, refridgerator, deep freeze, dish washer, washing machine, vacuum cleaner, iron, ironing board

Services

- **washing :**
Sheets supplement (+\$12*), Towels, Linen, Beach towels, Comforter(s), Comforter(s), Pillows
- **Single family home :**
Cleaning on departure supplement (+\$58*), Yard/swimming pool maintenance, Parking

For your guidance

- **For your guidance**
Kids welcome
Pets friendly
Non smoking rental
Water : hot/cold
Local voltage supply : 220V / 60Hz
- **Handicapped people welcome**
Fitted out for the disabled : mobility, visually impaired, hard of hearing, mentally



separate kitchen

Floor plan



Photo album - 1



living room



kitchen

separate kitchen



separate kitchen

bathroom

Photo album - 2



bedroom



bedroom



bedroom



bedroom



yard



covered terrace

Photo album - 3



covered terrace

yard



Single family home

shower room



seaside pursuits nearby

nature reserve



seaside pursuits nearby

[Theme breaks](#)

Nature discovery

[Favourite photo gallery - 1](#)



Apr 2017

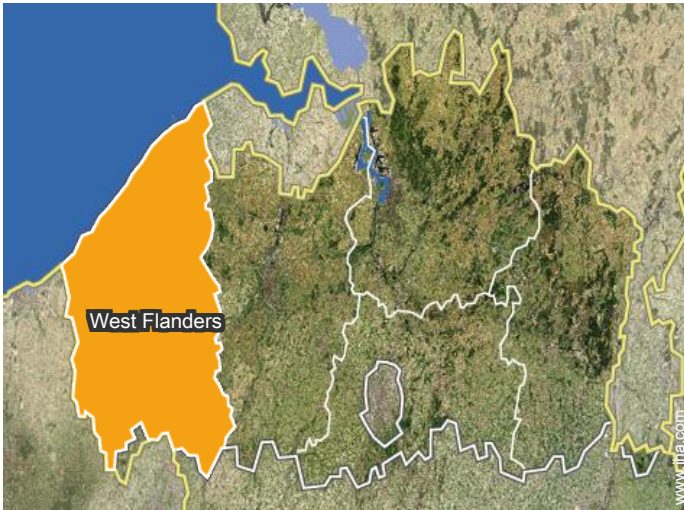


Nov 2017



Nov 2017

Location



Location & Access

" The House is quietly located in a better residential area and easily accessible with public transport. Only 10 walking minutes from the beautiful and wide sandy beach! Also Bruges, Ghent, Antwerp and Brussels are from Ostend very easily accessible by train. "



GPS coordinates in degrees, minutes, seconds: Latitude 51°12'39"N - Longitude 2°52'57"E (Dwelling)

Address

→ Stokkellaan 175
8400 Ostende

• Freeway (exit) A10

→ Ostende, West Flanders, Flanders, Belgium

→ Distance : 65'
→ Time : 5'

• Railroad station Ostend

→ Ostende, West Flanders, Flanders, Belgium

→ Distance : 65'
→ Time : 5'

• Airport Ostende Bruges

→ Ostende, West Flanders, Flanders, Belgium

→ Distance : 0.5mi.
→ Time : 5'

• Bruges : (12.5mi.)

Contact

Spoken languages



Charming vacation rental West Flanders - Ostende "Florivan"

11

[Book now](#)

Availability calendar - from : february 2019

Feb	F	Sa	Su	M	Tu	W	Th	F	Sa	Su	M	Tu	W	Th	F	Sa	Su	M	Tu	W	Th	F	Sa	Su	M	Tu	W	Th
2019	1	2	3	4	5	6	7	8	9	10	11	12	13	14	15	16	17	18	19	20	21	22	23	24	25	26	27	28

Mar	F	Sa	Su	M	Tu	W	Th	F	Sa	Su	M	Tu	W	Th	F	Sa	Su	M	Tu	W	Th	F	Sa	Su	M	Tu	W	Th	F	Sa	Su
2019	1	2	3	4	5	6	7	8	9	10	11	12	13	14	15	16	17	18	19	20	21	22	23	24	25	26	27	28	29	30	31

Apr	M	Tu	W	Th	F	Sa	Su	M	Tu	W	Th	F	Sa	Su	M	Tu	W	Th	F	Sa	Su	M	Tu	W	Th	F	Sa	Su	M	Tu
2019	1	2	3	4	5	6	7	8	9	10	11	12	13	14	15	16	17	18	19	20	21	22	23	24	25	26	27	28	29	30

May	W	Th	F	Sa	Su	M	Tu	W	Th	F	Sa	Su	M	Tu	W	Th	F	Sa	Su	M	Tu	W	Th	F	Sa	Su	M	Tu	W	Th	F
2019	1	2	3	4	5	6	7	8	9	10	11	12	13	14	15	16	17	18	19	20	21	22	23	24	25	26	27	28	29	30	31

June	Sa	Su	M	Tu	W	Th	F	Sa	Su	M	Tu	W	Th	F	Sa	Su	M	Tu	W	Th	F	Sa	Su	M	Tu	W	Th	F	Sa	Su
2019	1	2	3	4	5	6	7	8	9	10	11	12	13	14	15	16	17	18	19	20	21	22	23	24	25	26	27	28	29	30

Jul	M	Tu	W	Th	F	Sa	Su	M	Tu	W	Th	F	Sa	Su	M	Tu	W	Th	F	Sa	Su	M	Tu	W	Th	F	Sa	Su	M	Tu	W
2019	1	2	3	4	5	6	7	8	9	10	11	12	13	14	15	16	17	18	19	20	21	22	23	24	25	26	27	28	29	30	31

Aug	Th	F	Sa	Su	M	Tu	W	Th	F	Sa	Su	M	Tu	W	Th	F	Sa	Su	M	Tu	W	Th	F	Sa	Su	M	Tu	W	Th	F	Sa
2019	1	2	3	4	5	6	7	8	9	10	11	12	13	14	15	16	17	18	19	20	21	22	23	24	25	26	27	28	29	30	31

Sep	Su	M	Tu	W	Th	F	Sa	Su	M	Tu	W	Th	F	Sa	Su	M	Tu	W	Th	F	Sa	Su	M	Tu	W	Th	F	Sa	Su	M
2019	1	2	3	4	5	6	7	8	9	10	11	12	13	14	15	16	17	18	19	20	21	22	23	24	25	26	27	28	29	30

Oct	Tu	W	Th	F	Sa	Su	M	Tu	W	Th	F	Sa	Su	M	Tu	W	Th	F	Sa	Su	M	Tu	W	Th	F	Sa	Su	M	Tu	W	Th
2019	1	2	3	4	5	6	7	8	9	10	11	12	13	14	15	16	17	18	19	20	21	22	23	24	25	26	27	28	29	30	31

Nov	F	Sa	Su	M	Tu	W	Th	F	Sa	Su	M	Tu	W	Th	F	Sa	Su	M	Tu	W	Th	F	Sa							
2019	1	2	3	4	5	6	7	8	9	10	11	12	13	14	15	16	17	18	19	20	21	22	23	24	25	26	27	28	29	30

Reserved
 Low season
 Mid season
 High season



Charming vacation rental
Flanders - Belgium
"Florivan"

12
[Book now](#)

Availability calendar - from : november 2019

Dec	Su	M	Tu	W	Th	F	Sa	Su	M	Tu	W	Th	F	Sa	Su	M	Tu	W	Th	F	Sa	Su	M	Tu							
2019	1	2	3	4	5	6	7	8	9	10	11	12	13	14	15	16	17	18	19	20	21	22	23	24	25	26	27	28	29	30	31
	-	-	-	-	-	-	-	-	-	-	-	-	-	-	-	-	-	-	-	-	-	-	-	-	-	-	-	-	-	-	

Jan	W	Th	F	Sa	Su	M	Tu	W	Th	F	Sa	Su	M	Tu	W	Th	F	Sa	Su	M	Tu	W	Th	F							
2020	1	2	3	4	5	6	7	8	9	10	11	12	13	14	15	16	17	18	19	20	21	22	23	24	25	26	27	28	29	30	31
	-	-	-	-	-	-	-	-	-	-	-	-	-	-	-	-	-	-	-	-	-	-	-	-	-	-	-	-	-	-	

Reserved
 Low season
 Mid season
 High season

[Month : Next >>](#)

Rental rates - Charming Duplex Apartment - from 1 to 5 Person(s)

Rates	Night	Weekend	week	2 weeks	Month
■ Low season	-	\$136*	\$393*	-	-
■ Mid season	-	\$150*	\$458*	-	-
■ High season	-	-	\$573*	-	-

[Book now](#)

Booking conditions

• Reservation

- Payment made upon reservation : 50% of rental sum
- Payment balance : on handing over the keys
- Deposit required : \$234*

• rentals

- Service charges to be added
- Day tax included
- Cleaning charge levy on departure : \$58*

[▶ Book now](#)

[▶ Contact the owner](#)

Contact

Spoken languages



Accepted methods of payment

- Bank transfer (wire) • Cash

Contact directly the property owners

www.iha.com
Advert No.
3231
>> Book now <<

* Converted at the rate indicated : €100 = \$116.85 = £89

Advert No. 3231

www.iha.com

