

Charming vacation rental Barbanza "Palmeira"



Charming Penthouse top floor, shared entrance, in(on) a(an) Apartment house/ building 3 floors

Setting : ocean, waterfront

Capacity : **from 1 to 8 person(s)**

Bedroom(s) : 4

Room(s) : 4

Palmeira - A Coruña Province - Galicia

Spain

Advert No. 52878

www.iha.com



>> VACATION HOMES

DIRECT BY OWNERS

Charming vacation rental



Charming Penthouse top floor, shared entrance, in(on) a(an) Apartment house/ building 3 floors

- **Ideal for all age groups, family**
- **View :** panoramic, sea/ocean, garden/ park, harbour, village, fantastic sunset
- **Setting :** ocean, waterfront
- **Exposure :** South-east

Assets

- **Parking :**
Covered parking : 1 closed individual place (s).
- **baby equipment :**
High chair, infant tub, playpen

Benefits :
Direct access to the beach



view from the bedroom

Surroundings & location



Ocean



Fishing



Culture

Leisure

- **Leisure activities less than 12 miles :**

Bathing, pedalo, snorkelling, scuba diving, surfing, windsurfing, tennis, pathway/ broadwalk, coastal/forest paths, hiking, boat trips, basketball, paintball, fishing, fishing, spear fishing

- **Supervised :**

Sailing school, tennis school

- **Attractions and relaxation :**

Bar/pub, restaurant, movie theater, park and garden, nature reserve, exhibition center, festivals, natural spring baths, health spa, fitness center

Surroundings

- **Locality :**

Heated swimming pool 1.85mi.
Sea/ocean <165'
Sandy beach <165'
Nudist beach 2.5mi.
Sea inlet 330'
Public swimming pool 1.85mi.
Public tennis court 1.5mi.
Cliff 3mi.
River 1.85mi.
Lake 4.5mi.
Forest 0.62mi.
Marina 1.85mi.

- **Amenities :**

Village center 165'
Bus stop / bus station <165'
Breadstore <165'
Local stores <165'
Supermarket <165'
Hairdressing salon <165'
Bank 660'
ATM 660'
Drugstore 165'
Hospital 4.5mi.
Dispensary 1.25mi.



sitting room



view of the port

Charming vacation rental
Palmeira - Spain
"Palmeira"

3

[Book now](#)



sitting room

Exterior

- Ground surface :
< 1,076 Sq.ft.
- Outside setting :
Yard, wooded park, pinewood 5,400 Sq.ft., river
- Outside amenities :
BBQ



master bedroom

Interior

- Receive up to :
from 1 to 8 person(s) (8 adults)
- Liveable floor area :
1,300 Sq.ft.
- Interior layout :
4 Room(s), 4 bedroom(s), 2 bathroom, sitting room 215 Sq.ft., separate kitchen, dining room
- Sleeps - bed(s) :
2 full bed(s), 1 queen-size bed(s), 2 two twin beds
- Guest facilities :
Elevator, T.V., DVD player, board games, book collection, movie collection, t.v points, high speed internet access, wifi, cupboard, hair dryer, central heating, Glazed in area, Blinds, Double glazed, entry phone system
- Appliances :
Crockery/flatware, kitchen utensils, electric coffee maker, electric espresso coffee maker, electric kettle, toaster, juicer, electric hobs, oven, micro-wave oven, electric fries fryer, extractor hood, refridgerator, deep freeze, dish washer, washing machine, vacuum cleaner, iron, ironing board

Services

- washing :
Sheets (1 X / per week), Towels (1 X / per week), Beach towels (1 X / per week), Comforter(s), Pillows
- Single family home :
Cleaning on departure, Parking

For your guidance

- For your guidance
Kids welcome
Pets accepted under certain conditions (ask the owner)
Cell phone network coverage
Water : hot/cold
Local voltage supply : 220-240V / 50Hz
Electricity supply : mains



sitting room

Advert No. 52878

www.iha.com



>> VACATION HOMES

DIRECT BY OWNERS

Photo album - 1



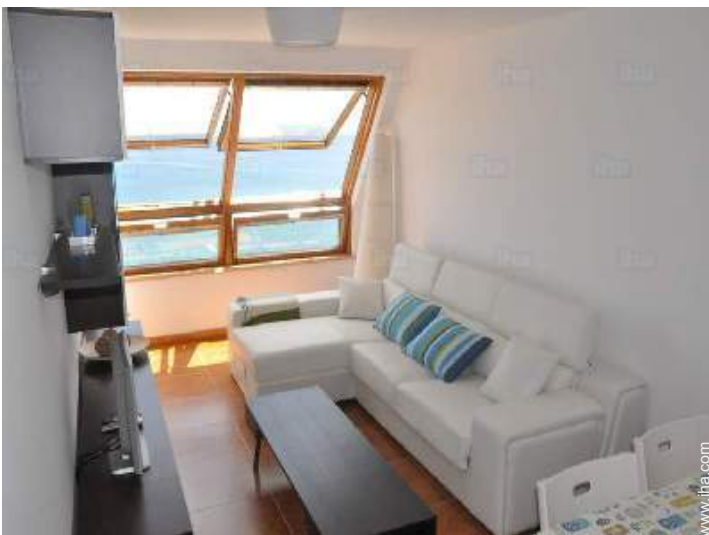
view from the bedroom



view of the port



sitting room



sitting room



sitting room

Photo album - 2



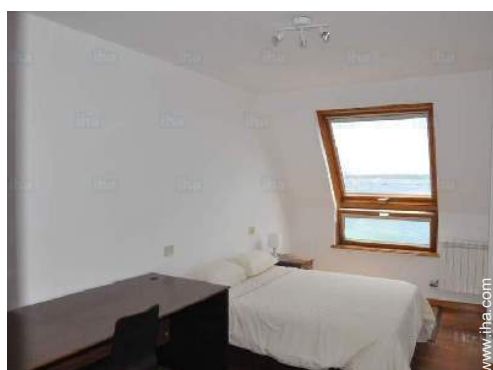
master bedroom



queen-size bed(s)



master bedroom



large bedroom



full bed(s)



bedroom



full bed(s)



two twin beds



two twin beds



separate kitchen

Photo album - 3



bathroom

bathroom



yard



BBQ



Attractions and relaxation



Attractions and relaxation



Attractions and relaxation



Attractions and relaxation



Attractions and relaxation



view of the sunset

Location



Location & Access



GPS coordinates in degrees, minutes, seconds: Latitude 42°35'2"N - Longitude 8°57'26"W ([Dwelling](#))

Address

→ Urbanizacion Palmeira
15950 Palmeira

• Freeway (exit) Pobra Norte

→ A Pobra do Caramiñal, A Coruña Province, Galicia, Spain
→ Distance : 2.5mi.
→ Time : 5'

• Freeway (exit) Salida Palmeira

→ Santa Uxía de Ribeira, A Coruña Province, Galicia, Spain
→ Distance : 2.5mi.
→ Time : 5'

- Santiago de Compostela : (34,8mi.)
- Santa Uxía de Ribeira : (2.5mi.)
- Pontevedra : (40mi.)

Contact

Spoken languages



Charming vacation rental
Barbanza - Spain
"Palmeira"

Availability calendar - from : october 2017

Oct	Su	M	Tu	W	Th	F	Sa	Su	M	Tu	W	Th	F	Sa	Su	M	Tu	W	Th	F	Sa	Su	M	Tu							
2017	1	2	3	4	5	6	7	8	9	10	11	12	13	14	15	16	17	18	19	20	21	22	23	24	25	26	27	28	29	30	31

Nov	W	Th	F	Sa	Su	M	Tu	W	Th	F	Sa	Su	M	Tu	W	Th	F	Sa	Su	M	Tu	W	Th							
2017	1	2	3	4	5	6	7	8	9	10	11	12	13	14	15	16	17	18	19	20	21	22	23	24	25	26	27	28	29	30
	-	-	-	-	-	-	-	-	-	-	-	-	-	-	-	-	-	-	-	-	-	-	-	-	-	-	-	-	-	-

Dec	F	Sa	Su	M	Tu	W	Th	F	Sa	Su	M	Tu	W	Th	F	Sa	Su	M	Tu	W	Th	F	Sa	Su							
2017	1	2	3	4	5	6	7	8	9	10	11	12	13	14	15	16	17	18	19	20	21	22	23	24	25	26	27	28	29	30	31
	-	-	-	-	-	-	-	-	-	-	-	-	-	-	-	-	-	-	-	-	-	-	-	-	-	-	-	-	-	-	

Jan	M	Tu	W	Th	F	Sa	Su	M	Tu	W	Th	F	Sa	Su	M	Tu	W	Th	F	Sa	Su	M	Tu	W							
2018	1	2	3	4	5	6	7	8	9	10	11	12	13	14	15	16	17	18	19	20	21	22	23	24	25	26	27	28	29	30	31
	-	-	-	-	-	-	-	-	-	-	-	-	-	-	-	-	-	-	-	-	-	-	-	-	-	-	-	-	-	-	

Feb	Th	F	Sa	Su	M	Tu	W	Th	F	Sa	Su	M	Tu	W	Th	F	Sa	Su	M	Tu	W							
2018	1	2	3	4	5	6	7	8	9	10	11	12	13	14	15	16	17	18	19	20	21	22	23	24	25	26	27	28
	-	-	-	-	-	-	-	-	-	-	-	-	-	-	-	-	-	-	-	-	-	-	-	-	-	-	-	-


Mar	Th	F	Sa	Su	M	Tu	W	Th	F	Sa	Su	M	Tu	W	Th	F	Sa	Su	M	Tu	W	Th	F	Sa							
2018	1	2	3	4	5	6	7	8	9	10	11	12	13	14	15	16	17	18	19	20	21	22	23	24	25	26	27	28	29	30	31
	-	-	-	-	-	-	-	-	-	-	-	-	-	-	-	-	-	-	-	-	-	-	-	-	-	-	-	-	-	-	

Apr	Su	M	Tu	W	Th	F	Sa	Su	M	Tu	W	Th	F	Sa	Su	M	Tu	W	Th	F	Sa	Su	M							
2018	1	2	3	4	5	6	7	8	9	10	11	12	13	14	15	16	17	18	19	20	21	22	23	24	25	26	27	28	29	30
	-	-	-	-	-	-	-	-	-	-	-	-	-	-	-	-	-	-	-	-	-	-	-	-	-	-	-	-	-	-

May	Tu	W	Th	F	Sa	Su	M	Tu	W	Th	F	Sa	Su	M	Tu	W	Th	F	Sa	Su	M	Tu	W	Th							
2018	1	2	3	4	5	6	7	8	9	10	11	12	13	14	15	16	17	18	19	20	21	22	23	24	25	26	27	28	29	30	31
	-	-	-	-	-	-	-	-	-	-	-	-	-	-	-	-	-	-	-	-	-	-	-	-	-	-	-	-	-	-	

June	F	Sa	Su	M	Tu	W	Th	F	Sa	Su	M	Tu	W	Th	F	Sa	Su	M	Tu	W	Th	F	Sa							
2018	1	2	3	4	5	6	7	8	9	10	11	12	13	14	15	16	17	18	19	20	21	22	23	24	25	26	27	28	29	30
	-	-	-	-	-	-	-	-	-	-	-	-	-	-	-	-	-	-	-	-	-	-	-	-	-	-	-	-	-	-

Jul	Su	M	Tu	W	Th	F	Sa	Su	M	Tu	W	Th	F	Sa	Su	M	Tu	W	Th	F	Sa	Su	M	Tu							
2018	1	2	3	4	5	6	7	8	9	10	11	12	13	14	15	16	17	18	19	20	21	22	23	24	25	26	27	28	29	30	31
	-	-	-	-	-	-	-	-	-	-	-	-	-	-	-	-	-	-	-	-	-	-	-	-	-	-	-	-	-	-	

 Low season

Charming vacation rental
A Coruña Province - Galicia
"Palmeira"


9

[Book now](#)

Availability calendar - from : July 2018






Aug	W	Th	F	Sa	Su	M	Tu	W	Th	F	Sa	Su	M	Tu	W	Th	F	Sa	Su	M	Tu	W	Th	F							
2018	1	2	3	4	5	6	7	8	9	10	11	12	13	14	15	16	17	18	19	20	21	22	23	24	25	26	27	28	29	30	31
	-	-	-	-	-	-	-	-	-	-	-	-	-	-	-	-	-	-	-	-	-	-	-	-	-	-	-	-	-	-	

Sep	Sa	Su	M	Tu	W	Th	F	Sa	Su	M	Tu	W	Th	F	Sa	Su	M	Tu	W	Th	F	Sa	Su							
2018	1	2	3	4	5	6	7	8	9	10	11	12	13	14	15	16	17	18	19	20	21	22	23	24	25	26	27	28	29	30
	-	-	-	-	-	-	-	-	-	-	-	-	-	-	-	-	-	-	-	-	-	-	-	-	-	-	-	-	-	

 Low season

[Month : Next >>](#)

Rental rates - Charming Penthouse - from 1 to 8 Person(s)

Rates	Night	Weekend	week	2 weeks	Month
 Low season	\$76*	\$293*	\$469*	\$821*	\$1173*
 Mid season	\$94* > 4	\$293*	\$704*	\$1056*	\$1759*
 High season	\$158* (Saturday) > 7	-	\$1114* (Saturday)	\$2229* (Saturday)	\$3871* (Saturday)
 Festive specials	\$82* (Saturday) > 7	\$293*	\$528*	\$938* (Saturday)	\$1759* (Saturday)
 Promotional period	\$135* (Saturday) > 7	-	\$938* (Saturday)	\$1877* (Saturday)	\$3871* (Saturday)

(Check-in day) > Minimum Night

[Book now](#)



sitting room



sitting room



sitting room



view from the bedroom



view of the port

Booking conditions

- **Reservation**

- Payment made upon reservation : 30% of rental sum
- Deposit required : \$235*

- **rentals**

- Service charges included
- Day tax included

Accepted methods of payment

- International Money Order
- Bank transfer (wire)
- Cash

[▶ Book now](#)

[▶ Contact the owner](#)

Contact directly the property owners

www.iha.com
Advert No.
52878
>> Book now <<

Contact

Spoken languages



* Converted at the rate indicated : €100 = \$117.29 = £89.59

Advert No. 52878

www.iha.com

