

Gîte - Self Catering Anse Royale "Fleur de Sel"



Gîte - Self Catering - Luxury
Apartment - Flat first floor, separate
entrance, in(on) a(an) Charming Villa
single storey

Setting : ocean, tranquil

Capacity : from 1 to 3 person(s)

Bedroom(s) : 1

Room(s) : 2

Anse Royale - Mahé Island - Inner Islands

Seychelles

Advert No. 57732

www.iha.com



Gîte - Self Catering



Gîte - Self Catering - Luxury Apartment
- Flat first floor, separate entrance, in(on) a
(an) Charming Villa single storey

- **Ideal for couples, couples with baby**
- **View :** panoramic, unobscured, not overlooked, sea/ocean, village
- **Setting :** ocean, tranquil
- **Exposure :** South-east

Assets

- **Parking :**
Parking uncovered : 4 internal.
- **baby equipment :**
High chair

Benefits :
Direct access to the beach



Surroundings & location



Leisure

- **Leisure activities less than 12 miles :**
Snorkelling, scuba diving, boat trips, fishing, deep-sea fishing

Surroundings

- **Locality :**
Sea/ocean <165'
Sandy beach <165'
9 hole golf course 2.5mi.



Kitchen Area



sandy beach



Interior

- **Receive up to :**
from 1 to 3 person(s) (2 adults, 1 kids)
- **Liveable floor area :**
650 Sq.ft.
- **Interior layout :**
2 Room(s), 1 bedroom(s), 1 bathroom, living room 380 Sq.ft.
- **Sleeps - bed(s) :**
1 king-size bed(s), 1 sleeper sofa(s) 1 pers, 1 baby cradle
- **Guest facilities :**
T.V., wifi, Hanging wardrobe, safe deposit box, hair dryer, partly air-conditioned, Drapes, Blinds, remote controlled gates
- **Appliances :**
Crockery/flatware, kitchen utensils, cafetiere, electric kettle, toaster, electric hobs, micro-wave oven, refridgerator

Exterior

- **Ground surface :**
8,600 Sq.ft.
- **Outside accommodation :**
Terrace 100 Sq.ft.
- **Outside setting :**
Tropical garden 8,600 Sq.ft.
- **Outside amenities :**
BBQ, sun lounger, outside shower facilities



Services

- **washing :**
Sheets (3 X / per week), Towels (3 X / per week), Beach towels (1 X / per week), Pillows (3 X / per week)
- **Single family home :**
Cleaning (6 X / per week)
- **Personnel :**
Staff

For your guidance

- **For your guidance**
Kids welcome
Pets accepted under certain conditions (ask the owner)
Non smoking rental, cell phone network coverage, personal transport advisable
Local voltage supply : 220-240V / 50Hz
Electricity supply : mains



Photo album - 1



sandy beach



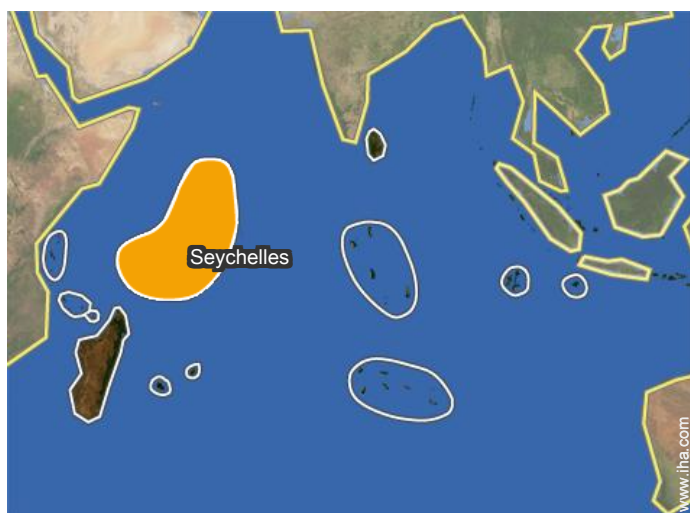
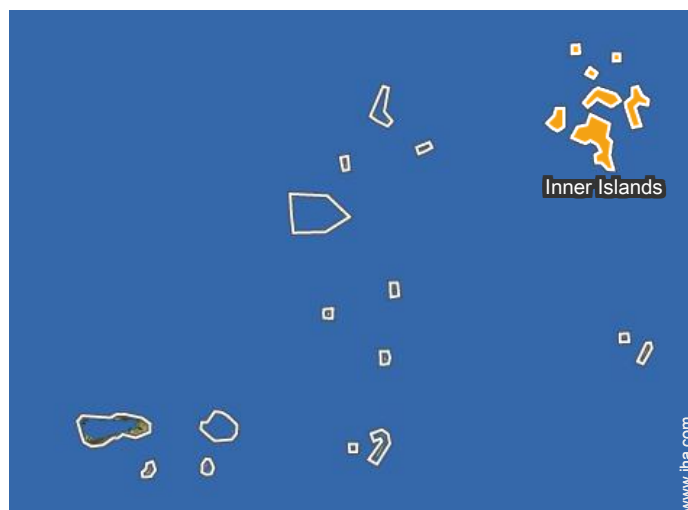
Kitchen Area

Photo album - 2



Interior facilities

Location



Location & Access



GPS coordinates in degrees, minutes, seconds: Latitude 4°44'14"S - Longitude 55°31'19"E (Dwelling)

Address

→ BP 1131

• Anse Royale : (0.3mi.)

• Airport Seychelles

→ Victoria, Mahé Island, Inner Islands, Seychelles

→ Distance : 4.5mi.

→ Time : 15'

• Bus station Anse Royale

→ Anse Royale, Mahé Island, Inner Islands, Seychelles

→ Distance : 65'

• Sea port Victoria

→ Victoria, Mahé Island, Inner Islands, Seychelles

→ Distance : 15.5mi.

→ Time : 40'

Contact

Spoken languages



Gîte - Self Catering
Anse Royale - Seychelles
"Fleur de Sel"

7

[Book now](#)

Availability calendar - from : january 2018

Jan	M	Tu	W	Th	F	Sa	Su	M	Tu	W	Th	F	Sa	Su	M	Tu	W	Th	F	Sa	Su	M	Tu	W							
2018	1	2	3	4	5	6	7	8	9	10	11	12	13	14	15	16	17	18	19	20	21	22	23	24	25	26	27	28	29	30	31
																					-	-	-	-	-	-	-	-	-	-	

Feb	Th	F	Sa	Su	M	Tu	W	Th	F	Sa	Su	M	Tu	W	Th	F	Sa	Su	M	Tu	W							
2018	1	2	3	4	5	6	7	8	9	10	11	12	13	14	15	16	17	18	19	20	21	22	23	24	25	26	27	28
	-	-	-	-	-	-	-	-	-	-	-	-	-	-	-	-	-	-	-	-	-	-	-	-	-	-	-	-

Mar	Th	F	Sa	Su	M	Tu	W	Th	F	Sa	Su	M	Tu	W	Th	F	Sa	Su	M	Tu	W	Th	F	Sa							
2018	1	2	3	4	5	6	7	8	9	10	11	12	13	14	15	16	17	18	19	20	21	22	23	24	25	26	27	28	29	30	31
	-	-	-	-	-	-	-	-	-	-	-	-	-	-	-	-	-	-	-	-	-	-	-	-	-	-	-	-	-	-	

Apr	Su	M	Tu	W	Th	F	Sa	Su	M	Tu	W	Th	F	Sa	Su	M	Tu	W	Th	F	Sa	Su	M							
2018	1	2	3	4	5	6	7	8	9	10	11	12	13	14	15	16	17	18	19	20	21	22	23	24	25	26	27	28	29	30
	-	-	-	-	-	-	-	-	-	-	-	-	-	-	-	-	-	-	-	-	-	-	-	-	-	-	-	-	-	-

May	Tu	W	Th	F	Sa	Su	M	Tu	W	Th	F	Sa	Su	M	Tu	W	Th	F	Sa	Su	M	Tu	W	Th							
2018	1	2	3	4	5	6	7	8	9	10	11	12	13	14	15	16	17	18	19	20	21	22	23	24	25	26	27	28	29	30	31
	-	-	-	-	-	-	-	-	-	-	-	-	-	-	-	-	-	-	-	-	-	-	-	-	-	-	-	-	-	-	

June	F	Sa	Su	M	Tu	W	Th	F	Sa	Su	M	Tu	W	Th	F	Sa	Su	M	Tu	W	Th	F	Sa							
2018	1	2	3	4	5	6	7	8	9	10	11	12	13	14	15	16	17	18	19	20	21	22	23	24	25	26	27	28	29	30
	-	-	-	-	-	-	-	-	-	-	-	-	-	-	-	-	-	-	-	-	-	-	-	-	-	-	-	-	-	-

Jul	Su	M	Tu	W	Th	F	Sa	Su	M	Tu	W	Th	F	Sa	Su	M	Tu	W	Th	F	Sa	Su	M	Tu							
2018	1	2	3	4	5	6	7	8	9	10	11	12	13	14	15	16	17	18	19	20	21	22	23	24	25	26	27	28	29	30	31
	-	-	-	-	-	-	-	-	-	-	-	-	-	-	-	-	-	-	-	-	-	-	-	-	-	-	-	-	-	-	

Aug	W	Th	F	Sa	Su	M	Tu	W	Th	F	Sa	Su	M	Tu	W	Th	F	Sa	Su	M	Tu	W	Th	F							
2018	1	2	3	4	5	6	7	8	9	10	11	12	13	14	15	16	17	18	19	20	21	22	23	24	25	26	27	28	29	30	31
	-	-	-	-	-	-	-	-	-	-	-	-	-	-	-	-	-	-	-	-	-	-	-	-	-	-	-	-	-	-	

Sep	Sa	Su	M	Tu	W	Th	F	Sa	Su	M	Tu	W	Th	F	Sa	Su	M	Tu	W	Th	F	Sa	Su							
2018	1	2	3	4	5	6	7	8	9	10	11	12	13	14	15	16	17	18	19	20	21	22	23	24	25	26	27	28	29	30
	-	-	-	-	-	-	-	-	-	-	-	-	-	-	-	-	-	-	-	-	-	-	-	-	-	-	-	-	-	-

Oct	M	Tu	W	Th	F	Sa	Su	M	Tu	W	Th	F	Sa	Su	M	Tu	W	Th	F	Sa	Su	M	Tu	W							
2018	1	2	3	4	5	6	7	8	9	10	11	12	13	14	15	16	17	18	19	20	21	22	23	24	25	26	27	28	29	30	31
	-	-	-	-	-	-	-	-	-	-	-	-	-	-	-	-	-	-	-	-	-	-	-	-	-	-	-	-	-	-	



Gîte - Self Catering
Mahé Island - Inner Islands
"Fleur de Sel"

8

[Book now](#)

Availability calendar - from : october 2018

Nov	Th	F	Sa	Su	M	Tu	W	Th	F	Sa	Su	M	Tu	W	Th	F	Sa	Su	M	Tu	W	Th	F	Sa	Su	M	Tu	W	Th	F
2018	1	2	3	4	5	6	7	8	9	10	11	12	13	14	15	16	17	18	19	20	21	22	23	24	25	26	27	28	29	30
-	-	-	-	-	-	-	-	-	-	-	-	-	-	-	-	-	-	-	-	-	-	-	-	-	-	-	-	-	-	-

Dec	Sa	Su	M	Tu	W	Th	F	Sa	Su	M	Tu	W	Th	F	Sa	Su	M	Tu	W	Th	F	Sa	Su	M	Tu	W	Th	F	Sa	Su	M
2018	1	2	3	4	5	6	7	8	9	10	11	12	13	14	15	16	17	18	19	20	21	22	23	24	25	26	27	28	29	30	31
-	-	-	-	-	-	-	-	-	-	-	-	-	-	-	-	-	-	-	-	-	-	-	-	-	-	-	-	-	-	-	-

[Month : Next >>](#)

Rental rates - Gîte - Self Catering - Luxury Apartment - Flat - from 1 to 3 Person(s)

Rates	Night	Weekend	week	2 weeks	Month
 Low season	\$176* > 3	-	-	-	-
 High season	\$176* > 3	-	-	-	-

> Minimum Night

[Book now](#)

Booking conditions

• Reservation

- Payment made upon reservation : \$528*
- Deposit required : \$528*

• rentals

- Service charges included
- Day tax in addition
- Cleaning charge on departure included

Accepted methods of payment

- Visa/Delta/Electron
- Bank transfer (wire)
- Cash

[▶ Book now](#)

[▶ Contact the owner](#)

Contact directly the property owners

www.iha.com
Advert No.
57732
[>> Book now <<](#)

Contact

Spoken languages



* Converted at the rate indicated : €100 = \$117.29 = £89.59

Advert No. 57732

www.iha.com



[>> VACATION HOMES](#)

DIRECT BY OWNERS