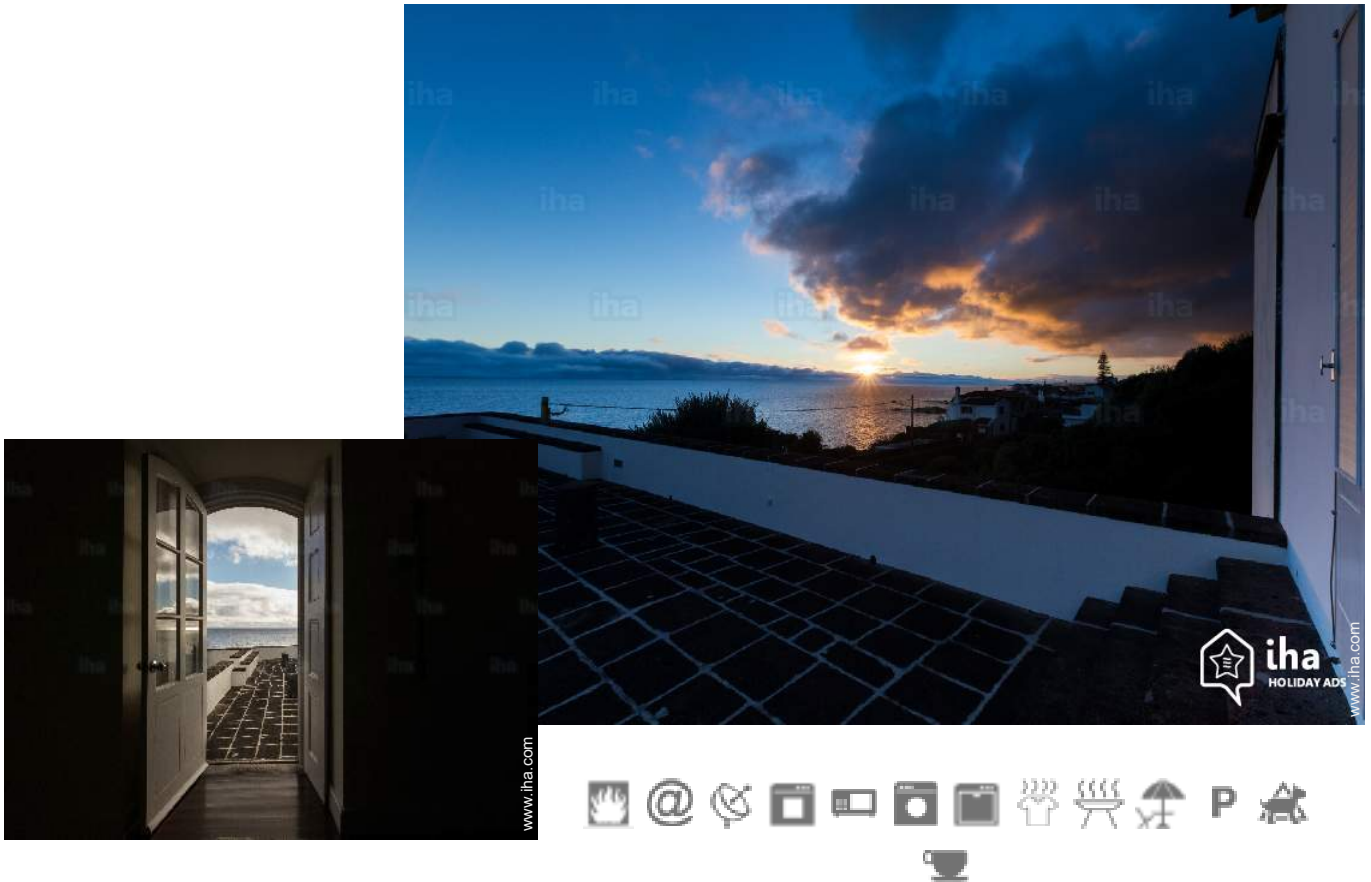


Gîte - Self Catering Atalhada "Casa da Rocha Quebrada"

Located over the sea; view to the sea and mountain. Beautiful classified house, with gorgeous balconies. Surrounded by a green yard with big old trees.



Gîte - Self Catering - Country House, detached, 1 floor, separate entrance, in(on) a(an) Private property

Setting : ocean, tranquil

Capacity : from 1 to 6 person(s)

Bedroom(s) : 3

Room(s) : 8

Atalhada - São Miguel Island - Eastern Group

Azores

Advert No. 70803

www.ihaholidayads.com



>> VACATION HOMES

DIRECT BY OWNERS



Gîte - Self Catering



Gîte - Self Catering - Country House, detached, 1 floor, separate entrance, in(on) a(an) Private property

- **Ideal for family, group**
- **View :** panoramic, unobscured, not overlooked, sea/ocean, fantastic sunset
- **Setting :** ocean, tranquil
- **Exposure :** South

" In Atalhada Lagoa, just 5 kms east of Ponta Delgada, it is an 18th century manor house, overlooking the sea, which is considered regional heritage due to its wonderful and rich architecture and pristine conservation condition. The house has the ground floor and 1st floor. The 1st floor is fully suited to receive guests who want to stay in just one floor. There you will find all the needed rooms and facilities, namely 3 bedrooms with private bathrooms, dining room, living room, snooker room, den, kitchen, amazing balconies with gorgeous sea and mountain views and a Chapel. "

Assets

- **Parking :**
Parking uncovered : internal.



Surroundings & location



Ocean

" The house is located about 2.5 km from Pópulo beaches and 2 km from Lagoa sea swimming-pools, and just a few minutes, walking distances, to a natural sea swimming area. "

Leisure

- **Leisure activities less than 12 miles :**

Bathing, snorkelling, scuba diving, Scuba diving (Standard diving dress), banana boat, water skiing, jet ski, surfing, windsurfing, sailing, kite surfing, golf, tennis, riding school, pathway/broadwalk, coastal/forest paths, hiking, rappel, paragliding, boat trips, horse-drawn carriage, horse trekking, mini-golf, ten-pin bowling, basketball, safari, fishing, deep-sea fishing, fishing, spear fishing

Surroundings

- **Locality :**

Sea/ocean <165'
Sandy beach 1.25mi.
Public swimming pool 1.85mi.
18 hole golf course 4.5mi.
Watersports centre 6mi.
Marina 1.5mi.





Exterior

- **Ground surface :**
1.25 acre
- **Outside accommodation :**
Terrace 530 Sq.ft., sundeck
- **Outside setting :**
Private courtyard, enclosed grounds 2,150 Sq.ft., lawn 3,300 Sq.ft., wooded park 2.5 acres
- **Outside amenities :**
BBQ, yard table(s), 10 yard seat(s), parasol, chaise(s) longue(s)



Interior

- **Receive up to :**
from 1 to 6 person(s)
- **Liveable floor area :**
3,300 Sq.ft.
- **Interior layout :**
8 Room(s), 3 bedroom(s), 3 bathroom, 3 shower room, 2 toilets, living room 380 Sq. ft., typical style kitchen, dining room, cosy nook, games room, walk-in closet, office, patio, veranda, loggia
- **Sleeps - bed(s) :**
1 full bed(s), 1 king-size bed(s), 1 twin bed (s), 2 two twin beds, 2 possible extra bed(s)
- **Guest facilities :**
Fireplace, T.V., vcr, DVD player, cable/satelite, internet access, high speed internet access, wifi, wardrobe, Drapes, Rolling shutters
- **Appliances :**
Crockery/flatware, kitchen utensils, cafetiere, electric coffee maker, electric kettle, toaster, electric hobs, oven, micro-wave oven, extractor hood, refridgerator, deep freeze, dish washer, washing machine, clothes dryer, vacuum cleaner, iron, ironing board

Services

- **washing :**
Sheets (1 X / per week), Towels (1 X / per week)
- **Single family home :**
Cleaning (1 X / per week), Parking
- **Restauration :**
Breakfast supplement

For your guidance

- **For your guidance**
Kids welcome
Pets accepted under certain conditions (ask the owner)
Present on site : pets, equine animals, farm animals
Cell phone network coverage, personal transport advisable
Water : hot/cold
Local voltage supply : 220-240V / 50Hz



Photo album - 1



Photo album - 2

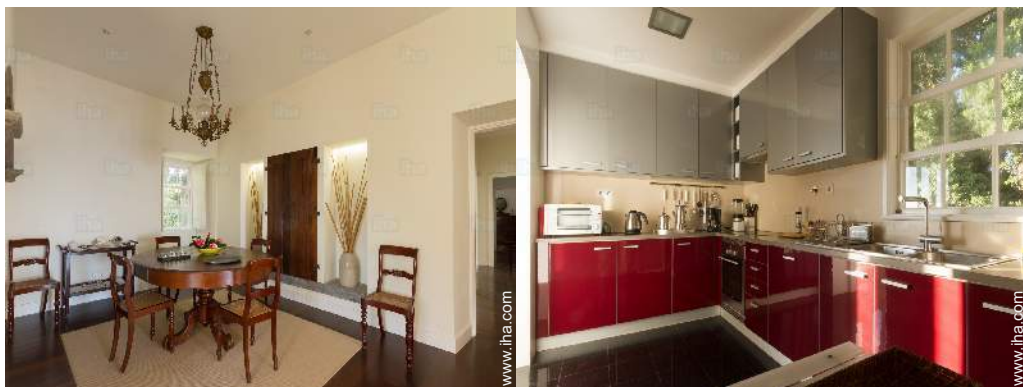
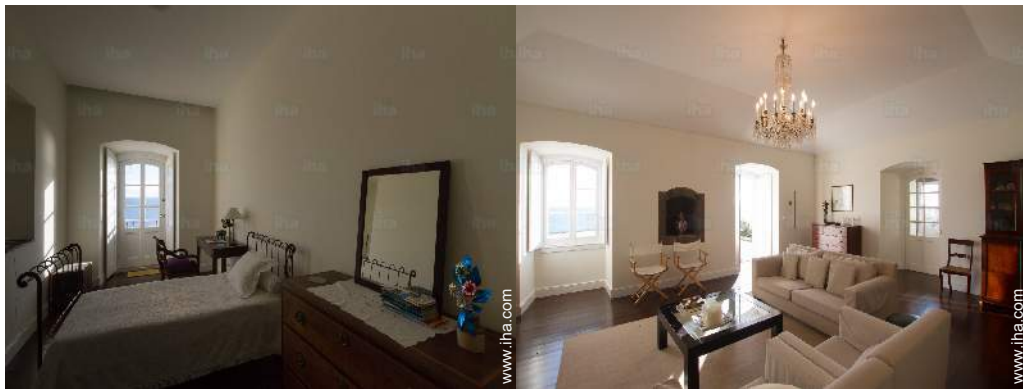
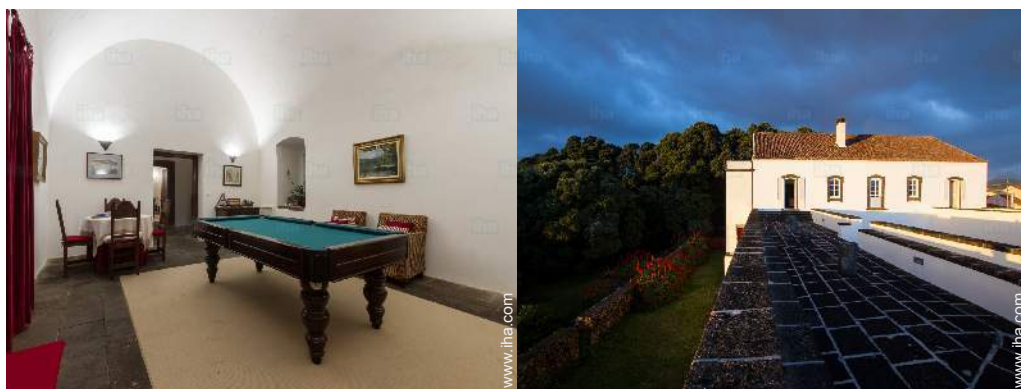
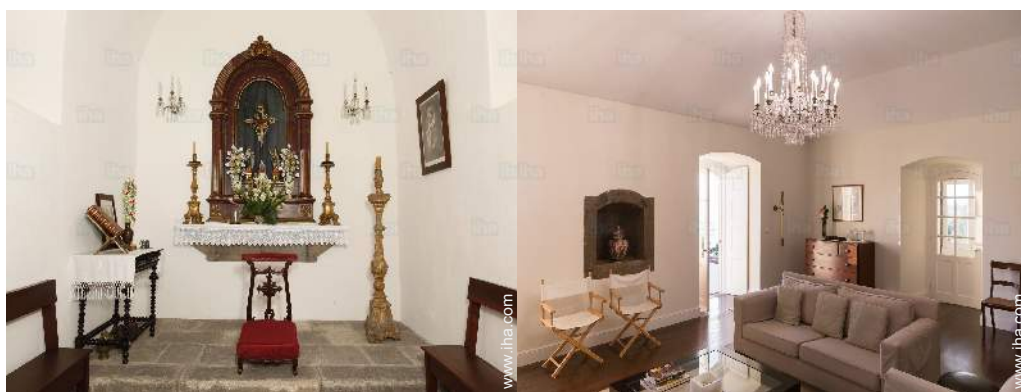
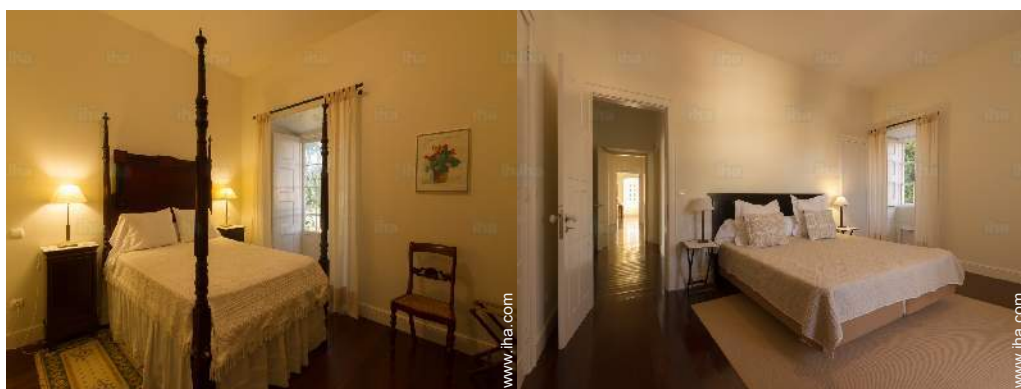


Photo album - 3




Location



Location & Access

" Located at 5 kms from Ponta Delgada, close to the beaches, in Atalhada-Lagoa, it is a 18th Manor which enjoys a privileged view over the sea. "

 GPS coordinates in degrees, minutes, seconds: Latitude 37°44'46"N - Longitude 25°35'46"W (Dwelling)

Address

→ Rua Nossa Senhora da Apresentação N
2
9560 Atalhada

• Airport João Paulo II

→ Ponta Delgada, São Miguel Island,
Eastern Group, Azores
→ Distance : 9mi.
→ Time : 15'

- Capelas : (11,2mi.)
- Ponta Delgada : (7,5mi.)
- Ribeira Grande : (8.7mi.)

Contact

Spoken
languages



Gîte - Self Catering
 São Miguel Island - Eastern Group
"Casa da Rocha Quebrada"

Availability calendar - from : december 2018

Dec	Sa	Su	M	Tu	W	Th	F	Sa	Su	M	Tu	W	Th	F	Sa	Su	M	Tu	W	Th	F	Sa	Su	M	Tu	W	Th	F	Sa	Su	M
2018	1	2	3	4	5	6	7	8	9	10	11	12	13	14	15	16	17	18	19	20	21	22	23	24	25	26	27	28	29	30	31

Jan	Tu	W	Th	F	Sa	Su	M	Tu	W	Th	F	Sa	Su	M	Tu	W	Th	F	Sa	Su	M	Tu	W	Th	F	Sa	Su	M	Tu	W	Th
2019	1	2	3	4	5	6	7	8	9	10	11	12	13	14	15	16	17	18	19	20	21	22	23	24	25	26	27	28	29	30	31
	-	-	-	-	-	-	-	-	-	-	-	-	-	-	-	-	-	-	-	-	-	-	-	-	-	-	-	-	-	-	

Feb	F	Sa	Su	M	Tu	W	Th	F	Sa	Su	M	Tu	W	Th	F	Sa	Su	M	Tu	W	Th	F	Sa	Su	M	Tu	W	Th
2019	1	2	3	4	5	6	7	8	9	10	11	12	13	14	15	16	17	18	19	20	21	22	23	24	25	26	27	28
	-	-	-	-	-	-	-	-	-	-	-	-	-	-	-	-	-	-	-	-	-	-	-	-	-	-	-	-

Mar	F	Sa	Su	M	Tu	W	Th	F	Sa	Su	M	Tu	W	Th	F	Sa	Su	M	Tu	W	Th	F	Sa	Su	M	Tu	W	Th	F	Sa	Su
2019	1	2	3	4	5	6	7	8	9	10	11	12	13	14	15	16	17	18	19	20	21	22	23	24	25	26	27	28	29	30	31
	-	-	-	-	-	-	-	-	-	-	-	-	-	-	-	-	-	-	-	-	-	-	-	-	-	-	-	-	-	-	

Apr	M	Tu	W	Th	F	Sa	Su	M	Tu	W	Th	F	Sa	Su	M	Tu	W	Th	F	Sa	Su	M	Tu	W	Th	F	Sa	Su	M	Tu
2019	1	2	3	4	5	6	7	8	9	10	11	12	13	14	15	16	17	18	19	20	21	22	23	24	25	26	27	28	29	30
	-	-	-	-	-	-	-	-	-	-	-	-	-	-	-	-	-	-	-	-	-	-	-	-	-	-	-	-	-	

May	W	Th	F	Sa	Su	M	Tu	W	Th	F	Sa	Su	M	Tu	W	Th	F	Sa	Su	M	Tu	W	Th	F	Sa	Su	M	Tu	W	Th	F
2019	1	2	3	4	5	6	7	8	9	10	11	12	13	14	15	16	17	18	19	20	21	22	23	24	25	26	27	28	29	30	31
	-	-	-	-	-	-	-	-	-	-	-	-	-	-	-	-	-	-	-	-	-	-	-	-	-	-	-	-	-	-	

June	Sa	Su	M	Tu	W	Th	F	Sa	Su	M	Tu	W	Th	F	Sa	Su	M	Tu	W	Th	F	Sa	Su	M	Tu	W	Th	F	Sa	Su
2019	1	2	3	4	5	6	7	8	9	10	11	12	13	14	15	16	17	18	19	20	21	22	23	24	25	26	27	28	29	30
	-	-	-	-	-	-	-	-	-	-	-	-	-	-	-	-	-	-	-	-	-	-	-	-	-	-	-	-	-	

Jul	M	Tu	W	Th	F	Sa	Su	M	Tu	W	Th	F	Sa	Su	M	Tu	W	Th	F	Sa	Su	M	Tu	W	Th	F	Sa	Su	M	Tu	W
2019	1	2	3	4	5	6	7	8	9	10	11	12	13	14	15	16	17	18	19	20	21	22	23	24	25	26	27	28	29	30	31
	-	-	-	-	-	-	-	-	-	-	-	-	-	-	-	-	-	-	-	-	-	-	-	-	-	-	-	-	-	-	

Aug	Th	F	Sa	Su	M	Tu	W	Th	F	Sa	Su	M	Tu	W	Th	F	Sa	Su	M	Tu	W	Th	F	Sa	Su	M	Tu	W	Th	F	Sa
2019	1	2	3	4	5	6	7	8	9	10	11	12	13	14	15	16	17	18	19	20	21	22	23	24	25	26	27	28	29	30	31
	-	-	-	-	-	-	-	-	-	-	-	-	-	-	-	-	-	-	-	-	-	-	-	-	-	-	-	-	-	-	

Sep	Su	M	Tu	W	Th	F	Sa	Su	M	Tu	W	Th	F	Sa	Su	M	Tu	W	Th	F	Sa	Su	M	Tu	W	Th	F	Sa	Su	M
2019	1	2	3	4	5	6	7	8	9	10	11	12	13	14	15	16	17	18	19	20	21	22	23	24	25	26	27	28	29	30
	-	-	-	-	-	-	-	-	-	-	-	-	-	-	-	-	-	-	-	-	-	-	-	-	-	-	-	-	-	



Gîte - Self Catering
Atalhada - Azores
"Casa da Rocha Quebrada"

9

[Book now](#)




Availability calendar - from : september 2019

Oct	Tu	W	Th	F	Sa	Su	M	Tu	W	Th	F	Sa	Su	M	Tu	W	Th	F	Sa	Su	M	Tu	W	Th							
2019	1	2	3	4	5	6	7	8	9	10	11	12	13	14	15	16	17	18	19	20	21	22	23	24	25	26	27	28	29	30	31
	-	-	-	-	-	-	-	-	-	-	-	-	-	-	-	-	-	-	-	-	-	-	-	-	-	-	-	-	-	-	

Nov	F	Sa	Su	M	Tu	W	Th	F	Sa	Su	M	Tu	W	Th	F	Sa	Su	M	Tu	W	Th	F	Sa							
2019	1	2	3	4	5	6	7	8	9	10	11	12	13	14	15	16	17	18	19	20	21	22	23	24	25	26	27	28	29	30
	-	-	-	-	-	-	-	-	-	-	-	-	-	-	-	-	-	-	-	-	-	-	-	-	-	-	-	-	-	

[Month : Next >>](#)

Rental rates - Gîte - Self Catering - Country House - from 1 to 6 Person(s)

Rates	Night	Weekend	week	2 weeks	Month
 Low season	\$140* ↓	-	-	-	-
 Mid season	\$210* ↓	-	-	-	-
 High season	\$292*	-	-	-	-

[↓ Reducing rates](#)

[Book now](#)

Booking conditions

• Reservation

→ Payment made upon reservation :
50% of rental sum
→ Payment balance :
on handing over the keys

• rentals

→ Service charges included
→ Cleaning charge on departure included
→ Anticipated supplement for :
- baby
- animals
- supplementary bed(s)

Accepted methods of payment

• Bank transfer (wire) • Cash

[▶ Book now](#)

[▶ Contact the owner](#)

Contact directly the property owners

www.iha.com
Advert No.
70803
[>> Book now <<](#)

Contact

Spoken languages



* Converted at the rate indicated : €100 = \$116.85 = £89

Advert No. 70803

www.iha.com



[>> VACATION HOMES](#)

DIRECT BY OWNERS