

# Gîte - Self Catering Bastogne "Chez Virginie"

Holiday cottage, near Bastogne. Reasonable price, personalized welcome.  
Nature, large garden. Ideal for families or small groups of friends.



Gîte - Self Catering - Village House,  
detached, 3 floors, separate entrance, in  
(on) a(an) Private property

Setting : country setting, tranquil

Capacity : from 4 to 6 person(s)

Bedroom(s) : 3

Room(s) : 5



Eurogîtes

Bastogne - Luxembourg Province - Walloon

Belgium

Reservation : +32 (0) 61 21 59 83 (Belgium)

Advert No. 72851

www.ihaholiday.com



>> VACATION HOMES

DIRECT BY OWNERS

## Gîte - Self Catering



Gîte - Self Catering - Village House, detached, 3 floors, separate entrance, in(on) a(an) Private property

- **Ideal for family, all age groups**
- **View :** unobscured, country side, garden/park, village, square, fantastic sunset
- **Setting :** country setting, tranquil

" The House for rent is spacious and light. Located in a country village, is one of its major assets. The large garden and its flower beds invite children to games, and parents to relax. The equipment is modern and complete, as a family home. A particular care is given to cleanliness. "

## Assets

- **Parking :**  
Parking uncovered : 3 off road.
- **Advantages :**  
2 bike(s)
- **baby equipment :**  
High chair, comfort station, infant tub, baby potty, stroller



large bedroom

## Surroundings & location



" Bastogne and its region are known worldwide for the battle of the bulge. The surrounding nature is omnipresent. "

### Leisure

- **Leisure activities less than 12 miles :**  
Ski-trekking, bathing, golf, riding school, pony club, pathway/broadwalk, coastal/forest paths, hiking, mountain bike (path), donkey rides
- **Supervised :**  
Riding school
- **Attractions and relaxation :**  
Bar/pub, restaurant, movie theater, park and garden, leisure park, zoo/animal park, historical site, museum, antiques & bric-a-brac, local craftstore, cellar and wine tasting, sauna, steam baths, beauticians

### Surroundings

- **Locality :**  
Public swimming pool 2.5mi.  
18 hole golf course 12.5mi.  
River 15.5mi.  
Lake 12.5mi.  
Forest 1.85mi.
- **Amenities :**  
Village center <165'  
Downtown 3mi.  
Bus stop / bus station 330'  
Bike/mountain bike hire 3mi.  
Breadstore 3mi.  
Local stores 3mi.  
Supermarket 3mi.  
High class retailers 3mi.  
Hairdressing salon 3mi.  
Mail office 3mi.  
Bank 3mi.  
ATM 3mi.  
Drugstore 3mi.  
Doctor 3mi.  
Hospital 3mi.



master bedroom



Kitchen Area



infants bedroom

## Interior

- **Receive up to :**

from 4 to 6 person(s)

- **Liveable floor area :**

1,300 Sq.ft.

- **Interior layout :**

5 Room(s), 3 bedroom(s), 1 bathroom, 1 shower room, 2 toilets, living room 323 Sq. ft., american style kitchen, dining room, tv den

- **Sleeps - bed(s) :**

2 full bed(s), 2 bunk beds, 2 baby cradle

- **Guest facilities :**

Fireplace, T.V., DVD player, board games, tv points, cable/satellite, internet access, high speed internet access, wifi, wardrobe, Hanging wardrobe, fly screens, central heating, wood-burning stove, skylights, Drapes, Double glazed, intruder alarm, fire alarm

- **Appliances :**

Crockery/flatware, kitchen utensils, cafetiere, electric coffee maker, electric kettle, electric hobs, oven, micro-wave oven, extractor hood, refrigerator, dish washer, washing machine, vacuum cleaner, iron, ironing board

## Exterior

- **Ground surface :**

0.37 acre

- **Outside accommodation :**

Terrace 323 Sq.ft.

- **Outside setting :**

Private courtyard, enclosed grounds, landscaped yard 194 Sq.ft., lawn 194 Sq.ft., orchard 0.37 acre

- **Outside amenities :**

BBQ, yard table(s), 6 yard seat(s), parasol, sun lounger, child's swing



Leisure facilities

## Services

- **washing :**

Linen supplement (1 X / per week +\$6\*), Comforter(s), Pillows

- **Single family home :**

Cleaning supplement (1 X / per week +\$47\*), Snow clearance, Parking

- **Personnel :**

Baby sitting supplement

## For your guidance

- **For your guidance**

Kids welcome

Pets accepted under certain conditions (ask the owner)

Present on site : pets

Non smoking rental, cell phone network coverage, personal transport advisable

Water : hot/cold

Local voltage supply : 220-240V / 50Hz

Electricity supply : mains



bathroom

Photo album - 1



master bedroom



large bedroom



Kitchen Area



master bedroom



infants bedroom



bathroom

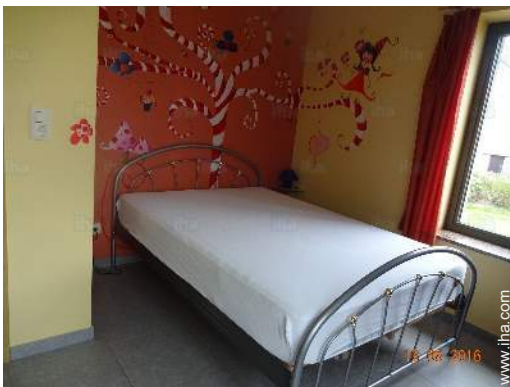
Photo album - 2



Leisure facilities



tv den



master bedroom



Assets



master bedroom



interior



Interior layout

## Location



## Location & Access

" In the Belgian Ardennes, close to the Grand Duchy of Luxembourg. A few kilometres from the E25 motorway. "



GPS coordinates in degrees, minutes, seconds: Latitude 50°0'51.18"N - Longitude 5°47'2.57"E ([Dwelling](#))

### Address

→ Mageret 11  
6600 Bastogne

### • Freeway (exit) E25 - N847 Mabompré

→ Mabompré, Luxembourg Province,  
Walloon, Belgium  
→ Distance : 6mi.  
→ Time : 10'

### • Freeway (exit) E25 - N854 Hemroulle

→ Bastogne, Luxembourg Province,  
Walloon, Belgium  
→ Distance : 3mi.  
→ Time : 5'

• Arlon : (21mi.)

- Houffalize : (10mi.)
- La Roche en Ardenne : (18.5mi.)

## Contact

Spoken languages



Gîte - Self Catering  
Bastogne - Belgium  
"Chez Virginie"

[Book now](#)

Availability calendar - from : june 2019

June	Sa	Su	M	Tu	W	Th	F	Sa	Su	M	Tu	W	Th	F	Sa	Su	M	Tu	W	Th	F	Sa	Su	
2019	1	2	3	4	5	6	7	8	9	10	11	12	13	14	15	16	17	18	19	20	21	22	23	24

Jul	M	Tu	W	Th	F	Sa	Su	M	Tu	W	Th	F	Sa	Su	M	Tu	W	Th	F	Sa	Su	M	Tu	W
2019	1	2	3	4	5	6	7	8	9	10	11	12	13	14	15	16	17	18	19	20	21	22	23	24

Aug	Th	F	Sa	Su	M	Tu	W	Th	F	Sa	Su	M	Tu	W	Th	F	Sa	Su	M	Tu	W	Th	F	Sa
2019	1	2	3	4	5	6	7	8	9	10	11	12	13	14	15	16	17	18	19	20	21	22	23	24

Sep	Su	M	Tu	W	Th	F	Sa	Su	M	Tu	W	Th	F	Sa	Su	M	Tu	W	Th	F	Sa	Su	M
2019	1	2	3	4	5	6	7	8	9	10	11	12	13	14	15	16	17	18	19	20	21	22	23

Oct	Tu	W	Th	F	Sa	Su	M	Tu	W	Th	F	Sa	Su	M	Tu	W	Th	F	Sa	Su	M	Tu	W	Th
2019	1	2	3	4	5	6	7	8	9	10	11	12	13	14	15	16	17	18	19	20	21	22	23	

Nov	F	Sa	Su	M	Tu	W	Th	F	Sa	Su	M	Tu	W	Th	F	Sa	Su	M	Tu	W	Th	F	Sa
2019	1	2	3	4	5	6	7	8	9	10	11	12	13	14	15	16	17	18	19	20	21	22	23

Dec	Su	M	Tu	W	Th	F	Sa	Su	M	Tu	W	Th	F	Sa	Su	M	Tu	W	Th	F	Sa	Su	M	Tu
2019	1	2	3	4	5	6	7	8	9	10	11	12	13	14	15	16	17	18	19	20	21	22	23	

Jan	W	Th	F	Sa	Su	M	Tu	W	Th	F	Sa	Su	M	Tu	W	Th	F	Sa	Su	M	Tu	W	Th	F
2020	1	2	3	4	5	6	7	8	9	10	11	12	13	14	15	16	17	18	19	20	21	22	23	

Feb	Sa	Su	M	Tu	W	Th	F	Sa	Su	M	Tu	W	Th	F	Sa	Su	M	Tu	W	Th	F	Sa	
2020	1	2	3	4	5	6	7	8	9	10	11	12	13	14	15	16	17	18	19	20	21	22	

Mar	Su	M	Tu	W	Th	F	Sa	Su	M	Tu	W	Th	F	Sa	Su	M	Tu	W	Th	F	Sa	Su	M	Tu
2020	1	2	3	4	5	6	7	8	9	10	11	12	13	14	15	16	17	18	19	20	21	22	23	

 Reserved



Gîte - Self Catering  
Luxembourg Province - Walloon  
"Chez Virginie"

8

[Book now](#)

Availability calendar - from : march 2020

Apr	W	Th	F	Sa	Su	M	Tu	W	Th	F	Sa	Su	M	Tu	W	Th	F	Sa	Su	M	Tu	W	Th							
2020	1	2	3	4	5	6	7	8	9	10	11	12	13	14	15	16	17	18	19	20	21	22	23	24	25	26	27	28	29	30
	-	-	-	-	-	-	-	-	-	-	-	-	-	-	-	-	-	-	-	-	-	-	-	-	-	-	-	-	-	

May	F	Sa	Su	M	Tu	W	Th	F	Sa	Su	M	Tu	W	Th	F	Sa	Su	M	Tu	W	Th	F	Sa	Su							
2020	1	2	3	4	5	6	7	8	9	10	11	12	13	14	15	16	17	18	19	20	21	22	23	24	25	26	27	28	29	30	31
	-	-	-	-	-	-	-	-	-	-	-	-	-	-	-	-	-	-	-	-	-	-	-	-	-	-	-	-	-	-	

Reserved

[Month : Next >>](#)

Rental rates - Gîte - Self Catering - Village House - from 4 to 6 Person(s)

Rates	Night	Weekend	week	2 weeks	Month
<input type="checkbox"/> Low season	-	\$210*	\$351* (Saturday)	\$666* (Saturday)	-
<input type="checkbox"/> Mid season	-	\$222*	\$409* (Saturday)	\$777* (Saturday)	-
<input type="checkbox"/> High season	-	-	\$467* (Saturday)	\$888* (Saturday)	-
<input type="checkbox"/> Festive specials	-	-	\$514* (Saturday)	\$977* (Saturday)	-

(Check-in day)

[Book now](#)

Booking conditions

• Reservation

- Payment made upon reservation : 25% of rental sum
- Payment balance : 1 month before the stay
- Deposit required : \$175\*

• rentals

- Service charges to be added
- Day tax in addition
- Cleaning charge levy on departure : \$47\*
- Anticipated supplement for : - firewood

Accepted methods of payment

- Bank transfer (wire) • Cash

[▶ Book now](#)

[▶ Contact the owner](#)

Contact directly the property owners

[www.iha.com](http://www.iha.com)  
Advert No.  
72851  
[>> Book now <<](#)

Contact

Spoken languages



\* Converted at the rate indicated : €100 = \$116.85 = £89

Advert No. 72851

[www.iha.com](http://www.iha.com)



[>> VACATION HOMES](#)

DIRECT BY OWNERS