

Gîte - Self Catering Bouillante "Couleur Caraïbes"



Gîte - Self Catering - Creole House, attached home, single storey, separate entrance, in(on) a(an) Property

Setting : enchanting, sporty

Capacity : from 1 to 6 person(s)

Bedroom(s) : 2

Room(s) : 3



Meublés de Tourisme (2 stars)

Bouillante - Basse Terre Island

Guadeloupe

Reservation : +590 (0) 690355997 (Guadeloupe)

Advert No. 16828

www.iha.com



Gîte - Self Catering



Gîte - Self Catering - Creole House, attached home, single storey, separate entrance, in(on) a(an) Property

- **Ideal for all age groups**
- **View** : panoramic, unobscured, not overlooked, sea/ocean, mountain, forest
- **Setting** : enchanting, sporty

Assets

- **Swimming pool** :
Shared swimming pool, oval (length 25', width 11.5'), illuminated, steps in, child secure, outside shower (open from 'january 01' till 'december 31')
- **Parking** :
Parking uncovered : 10 internal, 10 off road.



Swimming pool

Surroundings & location



Ocean



Fishing

Leisure

- **Leisure activities less than 12 miles** :

Snorkelling, scuba diving, canoeing, canyoning, tennis, coastal/forest paths, hiking, boat trips, basketball, fishing, deep-sea fishing, fishing, spear fishing, pétanque field

- **Supervised** :

Dive school

Surroundings

- **Locality** :

Sea/ocean 0.93mi.
Sandy beach 0.93mi.
Watersports centre 0.93mi.
Waterfall 3mi.
Forest 9mi.
Marina 1.85mi.



Kitchen Area



terrace



dining area

Interior

- **Receive up to :**
from 1 to 6 person(s) (4 adults, 2 kids)
- **Liveable floor area :**
650 Sq.ft.
- **Interior layout :**
3 Room(s), 2 bedroom(s), 1 shower room, 1 toilets, living room 215 Sq.ft., separate kitchen, dining room, dining area, mezzanine, veranda
- **Sleeps - bed(s) :**
1 queen-size bed(s), 1 sleeper sofa(s) 2 pers, 3 twin bed(s), 1 baby cradle
- **Guest facilities :**
T.V., internet access, high speed internet access, wifi, wardrobe, cupboard, hair dryer, partly air-conditioned, mobile cool air fan
- **Appliances :**
Crockery/flatware, kitchen utensils, cafetiere, electric coffee maker, electric kettle, toaster, gaz stove, refridgerator, washing machine, iron, ironing board

Exterior

- **Ground surface :**
1.5 acre
- **Outside accommodation :**
Terrace 130 Sq.ft., covered terrace 130 Sq.ft.
- **Outside amenities :**
BBQ, outside water closet facilities



shower room

Services

- **washing :**
Sheets (1 X / per week), Towels (1 X / per week), Linen (1 X / per week), Comforter(s) (1 X / per week), Pillows (1 X / per week)
- **Single family home :**
Cleaning on departure supplement (+\$43*), Yard/swimming pool maintenance, Parking
- **Restauration :**
Breakfast supplement (+\$10*), BBQ meal supplement (2 X / per week +\$19*), Half board supplement, Themed evening supplement (1 X / per week)

For your guidance

- **For your guidance**
Kids welcome
Pets accepted under certain conditions (ask the owner)
Non smoking rental, cell phone network coverage, personal transport advisable
Water : hot/cold
Local voltage supply : 220-240V / 50Hz
Electricity supply : mains
- **Handicapped people welcome**
Wheelchair access
Fitted out for the disabled : mobility



queen-size bed(s)

Photo album - 1



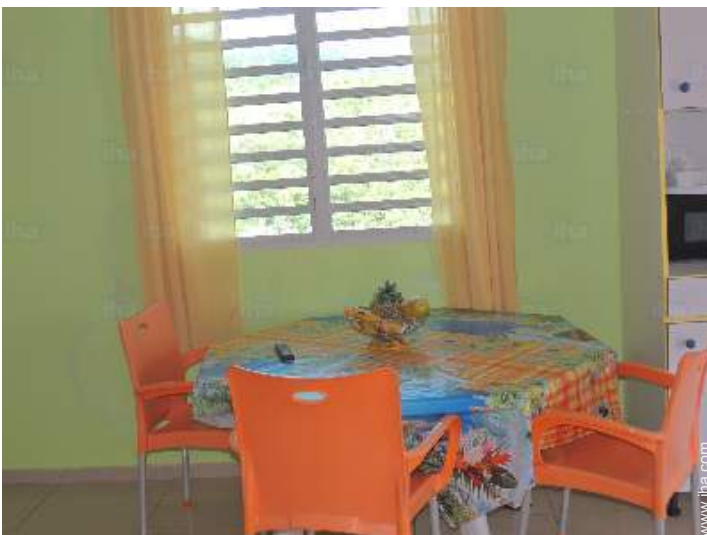
Swimming pool



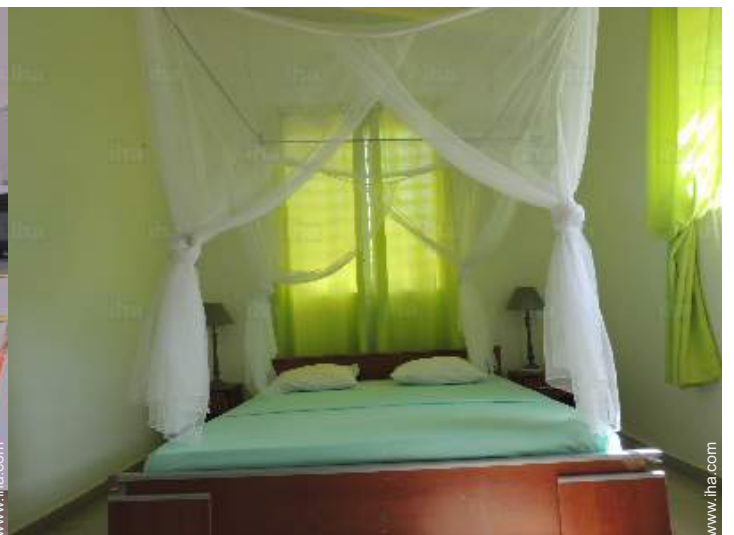
terrace



Kitchen Area



dining area



queen-size bed(s)

Photo album - 2



shower room



façade



mezzanine



bedroom



living room



overall view

Location



Location & Access



GPS coordinates in degrees, minutes, seconds: Latitude 16°10'44"N - Longitude 61°46'46"W ([Dwelling](#))

Address

→ Rue de l'Allemand
97125 Bouillante

• Airport Guadeloupe Pôle Caraïbes

→ Pointe à Pitre, Grande Terre,
Guadeloupe

→ Distance : 25mi.

- Deshaies : (9mi.)
- Pointe Noire : (6mi.)
- Sainte Anne : (32,3mi.)

Contact

Spoken
languages



Gîte - Self Catering
Basse Terre Island - Bouillante
"Couleur Caraïbes"

7

[Book now](#)

Availability calendar - from : may 2018

May	Tu	W	Th	F	Sa	Su	M	Tu	W	Th	F	Sa	Su	M	Tu	W	Th	F	Sa	Su	M	Tu	W	Th							
2018	1	2	3	4	5	6	7	8	9	10	11	12	13	14	15	16	17	18	19	20	21	22	23	24	25	26	27	28	29	30	31
																			-	-	-	-	-	-	-	-	-	-	-	-	

June	F	Sa	Su	M	Tu	W	Th	F	Sa	Su	M	Tu	W	Th	F	Sa	Su	M	Tu	W	Th	F	Sa							
2018	1	2	3	4	5	6	7	8	9	10	11	12	13	14	15	16	17	18	19	20	21	22	23	24	25	26	27	28	29	30
	-	-	-	-	-	-	-	-	-	-	-	-	-	-	-	-	-	-	-	-	-	-	-	-	-	-	-	-	-	-

Jul	Su	M	Tu	W	Th	F	Sa	Su	M	Tu	W	Th	F	Sa	Su	M	Tu	W	Th	F	Sa	Su	M	Tu							
2018	1	2	3	4	5	6	7	8	9	10	11	12	13	14	15	16	17	18	19	20	21	22	23	24	25	26	27	28	29	30	31
	-	-	-	-	-	-	-	-	-	-	-	-	-	-	-	-	-	-	-	-	-	-	-	-	-	-	-	-	-	-	

Aug	W	Th	F	Sa	Su	M	Tu	W	Th	F	Sa	Su	M	Tu	W	Th	F	Sa	Su	M	Tu	W	Th	F							
2018	1	2	3	4	5	6	7	8	9	10	11	12	13	14	15	16	17	18	19	20	21	22	23	24	25	26	27	28	29	30	31
	-	-	-	-	-	-	-	-	-	-	-	-	-	-	-	-	-	-	-	-	-	-	-	-	-	-	-	-	-	-	

Sep	Sa	Su	M	Tu	W	Th	F	Sa	Su	M	Tu	W	Th	F	Sa	Su	M	Tu	W	Th	F	Sa	Su							
2018	1	2	3	4	5	6	7	8	9	10	11	12	13	14	15	16	17	18	19	20	21	22	23	24	25	26	27	28	29	30
	-	-	-	-	-	-	-	-	-	-	-	-	-	-	-	-	-	-	-	-	-	-	-	-	-	-	-	-	-	-

Oct	M	Tu	W	Th	F	Sa	Su	M	Tu	W	Th	F	Sa	Su	M	Tu	W	Th	F	Sa	Su	M	Tu	W							
2018	1	2	3	4	5	6	7	8	9	10	11	12	13	14	15	16	17	18	19	20	21	22	23	24	25	26	27	28	29	30	31
	-	-	-	-	-	-	-	-	-	-	-	-	-	-	-	-	-	-	-	-	-	-	-	-	-	-	-	-	-	-	

Nov	Th	F	Sa	Su	M	Tu	W	Th	F	Sa	Su	M	Tu	W	Th	F	Sa	Su	M	Tu	W	Th	F							
2018	1	2	3	4	5	6	7	8	9	10	11	12	13	14	15	16	17	18	19	20	21	22	23	24	25	26	27	28	29	30
	-	-	-	-	-	-	-	-	-	-	-	-	-	-	-	-	-	-	-	-	-	-	-	-	-	-	-	-	-	-

Dec	Sa	Su	M	Tu	W	Th	F	Sa	Su	M	Tu	W	Th	F	Sa	Su	M	Tu	W	Th	F	Sa	Su	M							
2018	1	2	3	4	5	6	7	8	9	10	11	12	13	14	15	16	17	18	19	20	21	22	23	24	25	26	27	28	29	30	31
	-	-	-	-	-	-	-	-	-	-	-	-	-	-	-	-	-	-	-	-	-	-	-	-	-	-	-	-	-	-	

Jan	Tu	W	Th	F	Sa	Su	M	Tu	W	Th	F	Sa	Su	M	Tu	W	Th	F	Sa	Su	M	Tu	W	Th							
2019	1	2	3	4	5	6	7	8	9	10	11	12	13	14	15	16	17	18	19	20	21	22	23	24	25	26	27	28	29	30	31
	-	-	-	-	-	-	-	-	-	-	-	-	-	-	-	-	-	-	-	-	-	-	-	-	-	-	-	-	-	-	

Feb	F	Sa	Su	M	Tu	W	Th	F	Sa	Su	M	Tu	W	Th	F	Sa	Su	M	Tu	W	Th								
2019	1	2	3	4	5	6	7	8	9	10	11	12	13	14	15	16	17	18	19	20	21	22	23	24	25	26	27	28	
	-	-	-	-	-	-	-	-	-	-	-	-	-	-	-	-	-	-	-	-	-	-	-	-	-	-	-	-	-



Gîte - Self Catering
Basse Terre Island - Guadeloupe
"Couleur Caraïbes"

8

[Book now](#)

Availability calendar - from : february 2019

Mar	F	Sa	Su	M	Tu	W	Th	F	Sa	Su	M	Tu	W	Th	F	Sa	Su	M	Tu	W	Th	F	Sa	Su							
2019	1	2	3	4	5	6	7	8	9	10	11	12	13	14	15	16	17	18	19	20	21	22	23	24	25	26	27	28	29	30	31
-	-	-	-	-	-	-	-	-	-	-	-	-	-	-	-	-	-	-	-	-	-	-	-	-	-	-	-	-	-	-	

Apr	M	Tu	W	Th	F	Sa	Su	M	Tu	W	Th	F	Sa	Su	M	Tu	W	Th	F	Sa	Su	M	Tu							
2019	1	2	3	4	5	6	7	8	9	10	11	12	13	14	15	16	17	18	19	20	21	22	23	24	25	26	27	28	29	30
-	-	-	-	-	-	-	-	-	-	-	-	-	-	-	-	-	-	-	-	-	-	-	-	-	-	-	-	-	-	-

[Month : Next >>](#)

Rental rates - Gîte - Self Catering - Creole House - from 1 to 6 Person(s)

Rates	Night	Weekend	week	2 weeks	Month
 Low season	\$62*	\$123*	\$340*	-	-
 Mid season	\$62*	\$136*	\$432*	-	-
 High season	\$93*	\$185*	\$556*	-	-

[Book now](#)

Booking conditions

• Reservation

- Payment made upon reservation : 30% of rental sum
- Payment balance : on handing over the keys
- Deposit required : \$370*

• rentals

- Service charges included
- Day tax in addition
- Cleaning charge levy on departure : \$43*
- Anticipated supplement for :
 - animals
 - supplementary bed(s)

Accepted methods of payment

- Visa/Delta/Electron • Bank transfer (wire) • MasterCard/EuroCard • Check • Draft • Cash • Holiday coupon

[▶ Book now](#)

[▶ Contact the owner](#)

Contact directly the property owners

www.iha.com

Advert No.

16828

[>> Book now <<](#)

Contact

Spoken languages



* Converted at the rate indicated : €100 = \$123.46 = £88.94

Advert No. 16828

www.iha.com

