

Gîte - Self Catering Colmar "SAINT GERMAIN"



Gîte - Self Catering - Luxury
Apartment - Flat 2nd floor, separate
entrance, in(on) a(an) Private estate 1
floor

Setting : historical, city

Capacity : from 1 to 4 person(s)

Bedroom(s) : 1

Room(s) : 2

Colmar - Upper Rhine (68) - Alsace

France

Reservation : +33 (0) 389478801 (France)

Advert No. 27705

www.iha.com



Gîte - Self Catering



Gîte - Self Catering - Luxury Apartment
- Flat 2nd floor, separate entrance, in(on) a
(an) Private estate 1 floor

- **Ideal for all age groups, family**
- **View** : unobscured, city, square
- **Setting** : historical, city
- **Exposure** : North-east

Assets

- **Parking** :
Covered parking : 1 closed individual place (s).
- **baby equipment** :
High chair



elevator

Surroundings & location



City



Festival



Culture

Leisure

• Leisure activities less than 12 miles :

Bathing, tennis, hiking, paragliding, Microlights, ten-pin bowling, paintball

• Attractions and relaxation :

Bar/pub, discotheque, restaurant, movie theater, park and garden, exhibition center, art gallery, historical site, museum, theater, opera house, festivals, antiques & bric-a-brac, local craftstore, cellar and wine tasting, health spa, beauticians, fitness center

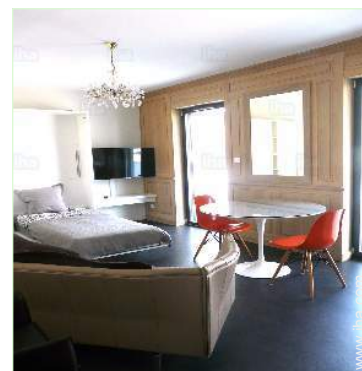
Surroundings

• Amenities :

Downtown 990'
Breadstore 990'
Caterer 990'
Local stores 990'
Supermarket 990'
High class retailers 990'
Hairdressing salon 990'
Internet cafe 660'
Mail office 165'
Bank 660'
ATM 660'
Drugstore 990'
Doctor 165'
Hospital 1.25mi.



Interior layout



full bed(s)



view from the balcony

Exterior

- **Outside accommodation :**
Covered terrace 55 Sq.ft.
- **Outside amenities :**
Yard table(s), 4 yard seat(s)



interior

Interior

- **Receive up to :**
from 1 to 4 person(s)
- **Liveable floor area :**
530 Sq.ft.
- **Interior layout :**
2 Room(s), 1 bedroom(s), 1 bathroom, 1 toilets, living room 270 Sq.ft.
- **Sleeps - bed(s) :**
1 full bed(s), 1 queen-size bed(s)
- **Guest facilities :**
Elevator, T.V., high speed internet access, wifi, wardrobe, cupboard, Hanging wardrobe, hair dryer, heated towel rail, central heating, Glazed in area, Double glazed, electric shutters, remote controlled gates
- **Appliances :**
Crockery/flatware, electric espresso coffee maker, electric kettle, toaster, electric hobs, oven, extractor hood, refrigerator, dish washer, washing machine, vacuum cleaner, iron, ironing board

Services

- **washing :**
Sheets, Towels, Linen, Comforter(s), Comforter(s), Pillows

For your guidance

- **For your guidance**
Kids welcome
No pet allowed
Non smoking rental
Water : hot/cold
Local voltage supply : 110-120V / 60Hz
- **Handicapped people welcome**
Wheelchair access
Fitted out for the disabled : mobility



Kitchen Area

Photo album - 1



elevator



full bed(s)



Interior layout



view from the balcony



Kitchen Area

Photo album - 2



interior

Interior layout



Interior layout

fitted out for the disabled



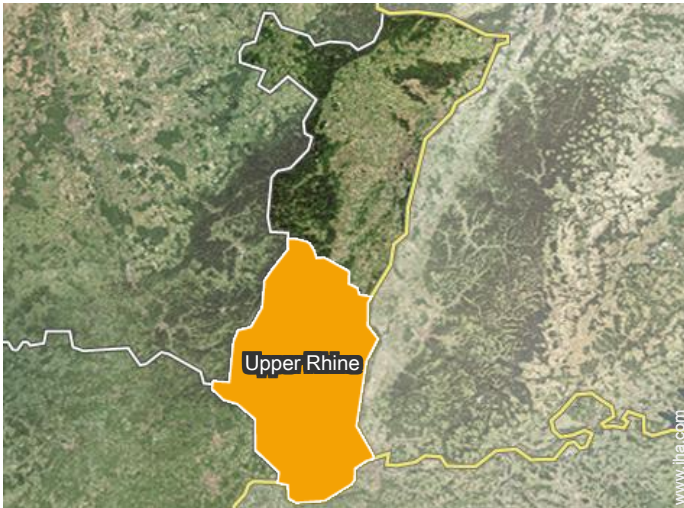
toilets

Guest facilities and furnishings



queen-size bed(s)

Location



Location & Access



GPS coordinates in degrees, minutes, seconds: Latitude 48°4'53"N - Longitude 7°21'36"E ([Dwelling](#))

Address

→ 31 rue de Thann
68000 COLMAR
68000 Colmar

● Railroad station

→ Colmar, Upper Rhine, Alsace, France
→ Distance : 0.62mi.
→ Time : 15'

● Airport

→ Basel, Basel City Canton, Switzerland
→ Distance : 34,8mi.
→ Time : 40'

● Airport

→ Strasbourg, Lower Rhine, Alsace, France
→ Distance : 34mi.
→ Time : 45'

- Kaysersberg : (8.7mi.)
- Riquewihr : (7,5mi.)
- Strasbourg : (40mi.)

Contact

Spoken languages



Gîte - Self Catering
Colmar - France
"SAINT GERMAIN"

[Book now](#)

Availability calendar - from : september 2018

Sep	Sa	Su	M	Tu	W	Th	F	Sa	Su	M	Tu	W	Th	F	Sa	Su	M	Tu	W	Th	F	Sa	Su	M	Tu	W	Th	F	Sa	Su
2018	1	2	3	4	5	6	7	8	9	10	11	12	13	14	15	16	17	18	19	20	21	22	23	24	25	26	27	28	29	30

Oct	M	Tu	W	Th	F	Sa	Su	M	Tu	W	Th	F	Sa	Su	M	Tu	W	Th	F	Sa	Su	M	Tu	W	Th	F	Sa	Su	M	Tu	W
2018	1	2	3	4	5	6	7	8	9	10	11	12	13	14	15	16	17	18	19	20	21	22	23	24	25	26	27	28	29	30	31

Nov	Th	F	Sa	Su	M	Tu	W	Th	F	Sa	Su	M	Tu	W	Th	F	Sa	Su	M	Tu	W	Th	F	Sa	Su	M	Tu	W	Th	F
2018	1	2	3	4	5	6	7	8	9	10	11	12	13	14	15	16	17	18	19	20	21	22	23	24	25	26	27	28	29	30

Dec	Sa	Su	M	Tu	W	Th	F	Sa	Su	M	Tu	W	Th	F	Sa	Su	M	Tu	W	Th	F	Sa	Su	M	Tu	W	Th	F	Sa	Su	M
2018	1	2	3	4	5	6	7	8	9	10	11	12	13	14	15	16	17	18	19	20	21	22	23	24	25	26	27	28	29	30	31

Jan	Tu	W	Th	F	Sa	Su	M	Tu	W	Th	F	Sa	Su	M	Tu	W	Th	F	Sa	Su	M	Tu	W	Th	F	Sa	Su	M	Tu	W	Th
2019	1	2	3	4	5	6	7	8	9	10	11	12	13	14	15	16	17	18	19	20	21	22	23	24	25	26	27	28	29	30	31

Feb	F	Sa	Su	M	Tu	W	Th	F	Sa	Su	M	Tu	W	Th	F	Sa	Su	M	Tu	W	Th							
2019	1	2	3	4	5	6	7	8	9	10	11	12	13	14	15	16	17	18	19	20	21	22	23	24	25	26	27	28

Mar	F	Sa	Su	M	Tu	W	Th	F	Sa	Su	M	Tu	W	Th	F	Sa	Su	M	Tu	W	Th	F	Sa	Su	M	Tu	W	Th	F	Sa	Su
2019	1	2	3	4	5	6	7	8	9	10	11	12	13	14	15	16	17	18	19	20	21	22	23	24	25	26	27	28	29	30	31

Apr	M	Tu	W	Th	F	Sa	Su	M	Tu	W	Th	F	Sa	Su	M	Tu	W	Th	F	Sa	Su	M	Tu	W	Th	F	Sa	Su	M	Tu
2019	1	2	3	4	5	6	7	8	9	10	11	12	13	14	15	16	17	18	19	20	21	22	23	24	25	26	27	28	29	30

May	W	Th	F	Sa	Su	M	Tu	W	Th	F	Sa	Su	M	Tu	W	Th	F	Sa	Su	M	Tu	W	Th	F	Sa	Su	M	Tu	W	Th	F
2019	1	2	3	4	5	6	7	8	9	10	11	12	13	14	15	16	17	18	19	20	21	22	23	24	25	26	27	28	29	30	31

June	Sa	Su	M	Tu	W	Th	F	Sa	Su	M	Tu	W	Th	F	Sa	Su	M	Tu	W	Th	F	Sa	Su							
2019	1	2	3	4	5	6	7	8	9	10	11	12	13	14	15	16	17	18	19	20	21	22	23	24	25	26	27	28	29	30

 Low season  High season

Gîte - Self Catering
Upper Rhine - Alsace
"SAINT GERMAIN"

8

[Book now](#)

Availability calendar - from : june 2019

Jul	M	Tu	W	Th	F	Sa	Su	M	Tu	W	Th	F	Sa	Su	M	Tu	W	Th	F	Sa	Su	M	Tu	W							
2019	1	2	3	4	5	6	7	8	9	10	11	12	13	14	15	16	17	18	19	20	21	22	23	24	25	26	27	28	29	30	31

Aug	Th	F	Sa	Su	M	Tu	W	Th	F	Sa	Su	M	Tu	W	Th	F	Sa	Su	M	Tu	W	Th	F	Sa							
2019	1	2	3	4	5	6	7	8	9	10	11	12	13	14	15	16	17	18	19	20	21	22	23	24	25	26	27	28	29	30	31

■ Low season

■ High season

[Month : Next >>](#)

Rental rates - Gîte - Self Catering - Luxury Apartment - Flat - from 1 to 4 Person(s)

Rates	Night	Weekend	week	2 weeks	Month
■ Low season	\$117*	\$234* (Friday)	\$736*	\$1309*	\$2454*
■ Mid season	\$129*	\$257*	\$736*	\$1309*	\$2454*
■ High season	\$140*	\$280*	\$736*	\$1309*	\$2454*

(Check-in day)

[Book now](#)

Booking conditions

• Reservation

- Payment made upon reservation : 25% of rental sum
- Payment balance : on handing over the keys
- Deposit required : \$327*

• rentals

- Service charges included
- Day tax included
- Cleaning charge levy on departure : \$47*

[▶ Book now](#)

[▶ Contact the owner](#)

Accepted methods of payment

- Bank transfer (wire) • Cash

Contact directly the property owners

www.iha.com
Advert No.
27705
[>> Book now <<](#)

Contact

Spoken languages



* Converted at the rate indicated : €100 = \$116.85 = £89

Advert No. 27705

www.iha.com



[>> VACATION HOMES](#)

DIRECT BY OWNERS