

Gîte - Self Catering Edinburgh "The Bell Tower"

The apartments truly give you a chance to experience a piece of Scottish history. Affordable short or longer rental.



Gîte - Self Catering - Charming Old Chapel, detached, 1 floor, shared entrance, in(on) a(an) Charming Property

Setting : historical, cultural

Capacity : from 4 to 6 person(s)

Bedroom(s) : 2

Room(s) : 4

Edinburgh - City of Edinburgh - Central Region (Scotland)
Scotland

Reservation : +44 (0) 7980213446 (United Kingdom)

Advert No. 46346

www.iha.com



Gîte - Self Catering



Gîte - Self Catering - Charming Old Chapel, detached, 1 floor, shared entrance, in(on) a(an) Charming Property

- View : courtyard
- Setting : historical, cultural

" These exclusive West End Holiday Apartments, with their original arched windows and stone work, have an enchanting look and feel. Each apartment has been uniquely converted to make the most of authentic features but with a modern day finish of all the mod-cons & conveniences for an easy comfortable stay. We have 2 apartments available for holiday letting & short stays within Dalry Church conversion. Located in the convenient area of Hay Market the apartments are within an easy walk of all Edinburgh's main tourist attractions. Each apartment retains unique original church features and both are furnished to high comfortable standards. "

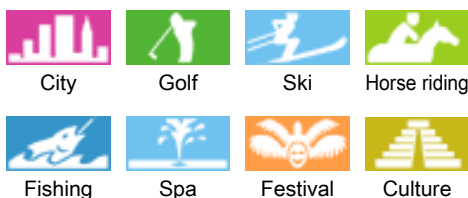
Assets

- baby equipment :
High chair



bathroom

Surroundings & location



" We have 2 apartments available for holiday letting & short stays within Dalry Church conversion. Located in the convenient area of Hay Market the apartments are within an easy walk of all Edinburgh's main tourist attractions. Each apartment retains unique original church features and both are furnished to high comfortable standards. "

Leisure

- Leisure activities less than 12 miles :

Golf, tennis, riding school, rappel, flying (club), boat trips, mini-golf, go-karting, ten-pin bowling, paintball

- Attractions and relaxation :

Bar/pub, discotheque, restaurant, movie theater, park and garden, zoo/animal park, exhibition center, art gallery, historical site, museum, theater, festivals, antiques & bric-a-brac, local craftstore, cellar and wine tasting, casino, beauticians, fitness center

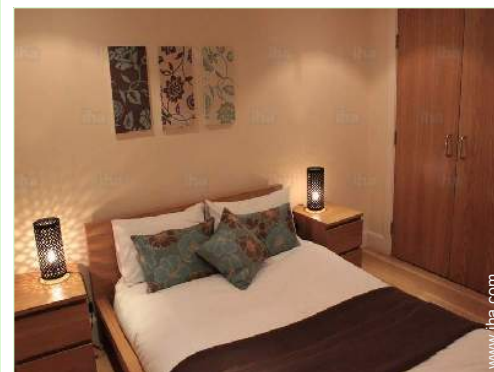
Surroundings

- Locality :

Ski slopes 0.93mi.
 Ice skating rink 0.3mi.
 Public swimming pool <165'
 Marina 0.62mi.

- Amenities :

Downtown <165'
 Bus stop / bus station <165'
 Subway station <165'
 Streetcar system <165'
 Car rental <165'
 Local stores <165'
 Supermarket <165'
 High class retailers 330'
 Hairdressing salon <165'
 Internet cafe
 Mail office <165'
 Bank 330'
 ATM <165'
 Drugstore <165'
 Hospital 0.3mi.



bedroom



Kitchen Area



Interior layout

Interior

- **Receive up to :**
from 4 to 6 person(s) (4 adults, 2 kids)
- **Liveable floor area :**
700 Sq.ft.
- **Interior layout :**
4 Room(s), 2 bedroom(s), sleeping den, 1 bathroom, living room 750 Sq.ft., dining area, tv den, reception hall, laundry room
- **Sleeps - bed(s) :**
1 full bed(s), 1 sleeper sofa(s) 2 pers, 2 two twin beds, 1 baby cradle, 2 possible extra bed(s)
- **Guest facilities :**
T.V., hi-fi system, DVD player, board games, movie collection, wifi, Hanging wardrobe, hair dryer, heated towel rail, power shower, central heating, Blinds, Double glazed, entry phone system, fire alarm
- **Appliances :**
Crockery/flatware, kitchen utensils, cafetiere, electric kettle, toaster, gaz stove, oven, micro-wave oven, extractor hood, refridgerator, dish washer, washing machine, clothes dryer, vacuum cleaner, iron, ironing board

Exterior

- **Outside setting :**
Private courtyard

Services

- **washing :**
Sheets, Towels, Linen, Comforter(s), Comforter(s), Pillows
- **Single family home :**
Cleaning supplement, Cleaning on departure supplement, Parking supplement (+\$1*)
- **Personnel :**
Guide supplement
- **Restauration :**
Breakfast supplement, Locally produced meals supplement, Picnic basket supplement

For your guidance

- **For your guidance**
Kids welcome
Pets accepted under certain conditions (ask the owner)
Non smoking rental
Electricity supply : mains
- **Handicapped people welcome**
Fitted out for the disabled : mobility

Photo album - 1



bedroom



bathroom



Kitchen Area



bedroom




Interior layout

Location



Location & Access

" The apartments are ideally located at the West End of Prince's Street in Hay Market area, within walking distance from all main tourist attractions and 10 minute walk from EICC conference centre, with Haymarket rail link a short 5 minute walk for out of city touring and the drop off point. "

 GPS coordinates in degrees, minutes, seconds: Latitude 55°56'38"N - Longitude 3°13'2"W ([Dwelling](#))

Address

→ Dalry Church, 15/1 Caledonian Road
Dalry
EH11 2DA Edinburgh

• Airport Edinburgh

→ Edinburgh, City of Edinburgh, Central Region (Scotland), Scotland
→ Distance : 0.62mi.
→ Time : 20'

• Freeway (exit) A8

→ Edinburgh, City of Edinburgh, Central Region (Scotland), Scotland
→ Distance : 65'

→ Time : 5'

• Railroad station Edinburgh Haymarket

→ Edinburgh, City of Edinburgh, Central Region (Scotland), Scotland
→ Distance : 65'
→ Time : 5'

• Edinburgh : (65')

Contact

Spoken languages



Gîte - Self Catering Central Region (Scotland) - Scotland "The Bell Tower"

[Book now](#)

Availability calendar - from : november 2017

Nov	W	Th	F	Sa	Su	M	Tu	W	Th	F	Sa	Su	M	Tu	W	Th	F	Sa	Su	M	Tu	W	Th							
2017	1	2	3	4	5	6	7	8	9	10	11	12	13	14	15	16	17	18	19	20	21	22	23	24	25	26	27	28	29	30
																							-	-	-	-	-	-	-	-

Dec	F	Sa	Su	M	Tu	W	Th	F	Sa	Su	M	Tu	W	Th	F	Sa	Su	M	Tu	W	Th	F	Sa	Su							
2017	1	2	3	4	5	6	7	8	9	10	11	12	13	14	15	16	17	18	19	20	21	22	23	24	25	26	27	28	29	30	31
	-	-	-	-	-	-	-	-	-	-	-	-	-	-	-	-	-	-	-	-	-	-	-	-	-	-	-	-	-	-	

Jan	M	Tu	W	Th	F	Sa	Su	M	Tu	W	Th	F	Sa	Su	M	Tu	W	Th	F	Sa	Su	M	Tu	W							
2018	1	2	3	4	5	6	7	8	9	10	11	12	13	14	15	16	17	18	19	20	21	22	23	24	25	26	27	28	29	30	31
	-	-	-	-	-	-	-	-	-	-	-	-	-	-	-	-	-	-	-	-	-	-	-	-	-	-	-	-	-	-	

Feb	Th	F	Sa	Su	M	Tu	W	Th	F	Sa	Su	M	Tu	W	Th	F	Sa	Su	M	Tu	W								
2018	1	2	3	4	5	6	7	8	9	10	11	12	13	14	15	16	17	18	19	20	21	22	23	24	25	26	27	28	
	-	-	-	-	-	-	-	-	-	-	-	-	-	-	-	-	-	-	-	-	-	-	-	-	-	-	-	-	-

Mar	Th	F	Sa	Su	M	Tu	W	Th	F	Sa	Su	M	Tu	W	Th	F	Sa	Su	M	Tu	W	Th	F	Sa							
2018	1	2	3	4	5	6	7	8	9	10	11	12	13	14	15	16	17	18	19	20	21	22	23	24	25	26	27	28	29	30	31
	-	-	-	-	-	-	-	-	-	-	-	-	-	-	-	-	-	-	-	-	-	-	-	-	-	-	-	-	-	-	

Apr	Su	M	Tu	W	Th	F	Sa	Su	M	Tu	W	Th	F	Sa	Su	M	Tu	W	Th	F	Sa	Su	M							
2018	1	2	3	4	5	6	7	8	9	10	11	12	13	14	15	16	17	18	19	20	21	22	23	24	25	26	27	28	29	30
	-	-	-	-	-	-	-	-	-	-	-	-	-	-	-	-	-	-	-	-	-	-	-	-	-	-	-	-	-	-

May	Tu	W	Th	F	Sa	Su	M	Tu	W	Th	F	Sa	Su	M	Tu	W	Th	F	Sa	Su	M	Tu	W	Th							
2018	1	2	3	4	5	6	7	8	9	10	11	12	13	14	15	16	17	18	19	20	21	22	23	24	25	26	27	28	29	30	31
	-	-	-	-	-	-	-	-	-	-	-	-	-	-	-	-	-	-	-	-	-	-	-	-	-	-	-	-	-	-	

June	F	Sa	Su	M	Tu	W	Th	F	Sa	Su	M	Tu	W	Th	F	Sa	Su	M	Tu	W	Th	F	Sa							
2018	1	2	3	4	5	6	7	8	9	10	11	12	13	14	15	16	17	18	19	20	21	22	23	24	25	26	27	28	29	30
	-	-	-	-	-	-	-	-	-	-	-	-	-	-	-	-	-	-	-	-	-	-	-	-	-	-	-	-	-	-

Jul	Su	M	Tu	W	Th	F	Sa	Su	M	Tu	W	Th	F	Sa	Su	M	Tu	W	Th	F	Sa	Su	M	Tu							
2018	1	2	3	4	5	6	7	8	9	10	11	12	13	14	15	16	17	18	19	20	21	22	23	24	25	26	27	28	29	30	31
	-	-	-	-	-	-	-	-	-	-	-	-	-	-	-	-	-	-	-	-	-	-	-	-	-	-	-	-	-	-	

Aug	W	Th	F	Sa	Su	M	Tu	W	Th	F	Sa	Su	M	Tu	W	Th	F	Sa	Su	M	Tu	W	Th	F							
2018	1	2	3	4	5	6	7	8	9	10	11	12	13	14	15	16	17	18	19	20	21	22	23	24	25	26	27	28	29	30	31
	-	-	-	-	-	-	-	-	-	-	-	-	-	-	-	-	-	-	-	-	-	-	-	-	-	-	-	-	-	-	



Gîte - Self Catering
Edinburgh - Scotland
"The Bell Tower"

7

[Book now](#)






Availability calendar - from : august 2018

Sep	Sa	Su	M	Tu	W	Th	F	Sa	Su	M	Tu	W	Th	F	Sa	Su	M	Tu	W	Th	F	Sa	Su							
2018	1	2	3	4	5	6	7	8	9	10	11	12	13	14	15	16	17	18	19	20	21	22	23	24	25	26	27	28	29	30
-	-	-	-	-	-	-	-	-	-	-	-	-	-	-	-	-	-	-	-	-	-	-	-	-	-	-	-	-	-	

Oct	M	Tu	W	Th	F	Sa	Su	M	Tu	W	Th	F	Sa	Su	M	Tu	W	Th	F	Sa	Su	M	Tu	W							
2018	1	2	3	4	5	6	7	8	9	10	11	12	13	14	15	16	17	18	19	20	21	22	23	24	25	26	27	28	29	30	31
-	-	-	-	-	-	-	-	-	-	-	-	-	-	-	-	-	-	-	-	-	-	-	-	-	-	-	-	-	-		

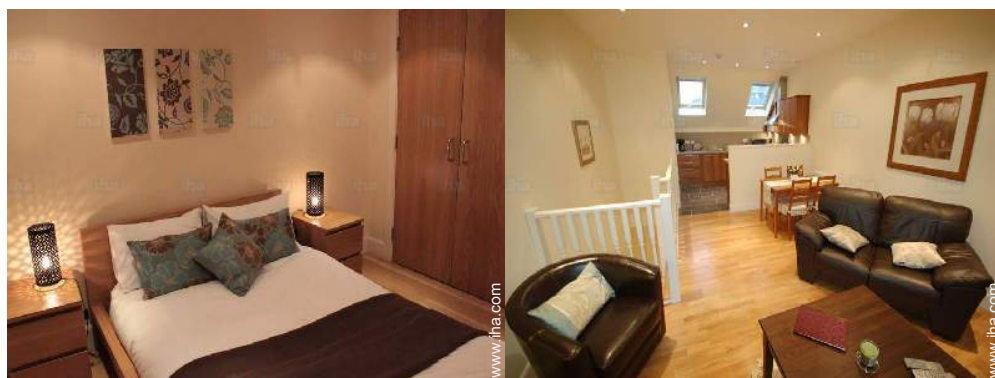
Month : Next >>

Rental rates - Gîte - Self Catering - Charming Old Chapel - from 4 to 6 Person(s)

Rates	Night	Weekend	week	2 weeks	Month
 Low season	\$144* ↓ > 3	\$393*	\$851*	\$1506*	\$2474*
 Mid season	\$164* ↓ > 3	\$432*	\$969*	\$1702*	\$3011*
 High season	\$229* ↓ > 5	\$655*	\$1650*	\$3077*	\$5891*
 Festive specials	-	-	\$1375* (Friday)	\$1558* (Friday)	\$5485*
 Promotional period	\$124* ↓ > 4	\$301*	\$694*	\$1270*	\$2069*

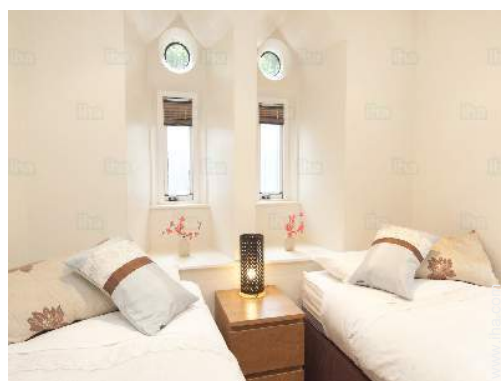
↓ Reducing rates (Check-in day) > Minimum Night

[Book now](#)



bedroom

Interior layout



bedroom



bathroom



Kitchen Area

Booking conditions

• Reservation

- Payment made upon reservation : 25% of rental sum
- Deposit required

• rentals

- Service charges to be added
- Cleaning charge levy on departure : \$47*
- Anticipated supplement for :
 - baby
 - supplementary bed(s)

[▶ Book now](#)

[▶ Contact the owner](#)

Accepted methods of payment

- International Money Order
- Bank transfer (wire)
- Check
- Draft
- PayPal
- Travellers Cheques
- Cash

Contact directly the property owners

www.ihacom

Advert No.

46346

>> [Book now](#) <<

Contact

Spoken languages



* Converted at the rate indicated : €100 = \$117.29 = £89.59

Advert No. 46346

www.ihacom

