

# Gîte - Self Catering Étretat "La Pépinière"



Gîte - Self Catering - Apartment-Flat first floor, separate entrance, in(on) a(an) Private property

Setting : country setting, romantic

Capacity : from 2 to 5 person(s)

Bedroom(s) : 2

Room(s) : 3



Clé vacances (3 keys)

Étretat - Seine Maritime (76) - Upper Normandy  
France

Reservation : +33 (0) 9 79 52 63 21 (France)

Advert No. 6814

www.iha.com



## Gîte - Self Catering



Gîte - Self Catering - Apartment-Flat first floor, separate entrance, in(on) a(an) Private property

- **Ideal for family, couples with baby**
- **View :** not overlooked, country side, swimming pool, garden/park, nightlights
- **Setting :** country setting, romantic
- **Exposure :** South-west

## Assets

- **Swimming pool :**  
Shared swimming pool, rectangular (length 23', width 9.8'), covered, illuminated, step ladder, child secure (open from 'june 01' till 'october 01')
- **Parking :**  
Parking uncovered : 1 reserved stall.
- **Advantages :**  
Pétanque field, 1 pétanque set(s)
- **baby equipment :**  
High chair, infant tub



view from the covered terrace

## Surroundings & location



### Leisure

- **Leisure activities less than 12 miles :**

Bathing, water skiing, jet ski, surfing, windsurfing, sailing, kite surfing, canoeing, golf, tennis, riding school, pony club, coastal/forest paths, hiking, Microlights, flying (club), glider (club), boat trips, horse trekking, mini-golf, hunting, acrobatics, fishing, fishing, pétanque field

- **Supervised :**

Sailing school, tennis school, riding school

- **Attractions and relaxation :**

Bar/pub, restaurant, movie theater, exhibition center, art gallery, historical site, museum, summer theater, festivals, antiques & bric-a-brac, local craftstore, casino, sauna, steam baths, fitness center, Bio farm

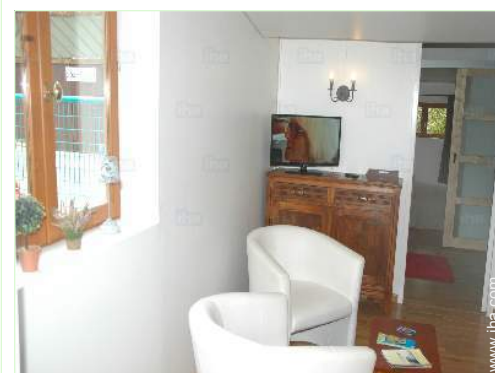
### Surroundings

- **Locality :**

Ice skating rink 18.5mi.  
Sea/ocean 1.25mi.  
Shingle beach 1.25mi.  
Public swimming pool 6mi.  
Public tennis court 0.93mi.  
18 hole golf course 1.25mi.  
Flying clubs 15.5mi.  
Windsurfing spots 18.5mi.  
Surfing spots 1.25mi.  
Watersports centre 1.25mi.  
Cliff 0.93mi.  
Marina 9mi.  
Slipway 6mi.  
Jetski slipway 6mi.

- **Amenities :**

Village center 0.93mi.  
Bus stop / bus station 0.3mi.  
Car rental 18.5mi.  
Boat rental 9mi.  
Breadstore 0.93mi.  
Caterer 0.93mi.  
Local stores 0.93mi.  
Supermarket 0.93mi.  
Hairdressing salon 0.93mi.  
Mail office 0.93mi.  
Bank 0.93mi.  
ATM 0.93mi.  
Drugstore 0.93mi.  
Doctor 0.62mi.  
Nurse 0.93mi.  
Hospital 9mi.



Guest facilities and furnishings



kitchen



view from the apartment

### Interior

- **Receive up to :**  
from 2 to 5 person(s) (2 adults, 3 kids)
- **Liveable floor area :**  
380 Sq.ft.
- **Interior layout :**  
3 Room(s), 2 bedroom(s), 1 shower room, 1 toilets, living room 140 Sq.ft., Kitchen Area, veranda
- **Sleeps - bed(s) :**  
1 queen-size bed(s), 1 bunk beds, 1 baby cradle
- **Guest facilities :**  
T.V., DVD player, board games, wifi, wardrobe, Hanging wardrobe, hair dryer, mosquito nets, central heating, Drapes, fire alarm
- **Appliances :**  
Crockery/flatware, kitchen utensils, cafetiere, electric kettle, toaster, electric raclette set, oven, micro-wave oven, extractor hood, refridgerator, dish washer, vacuum cleaner

### Exterior

- **Ground surface :**  
1.25 acre
- **Outside accommodation :**  
Covered terrace 215 Sq.ft.
- **Outside setting :**  
Enclosed grounds, yard, landscaped yard > 0.25 acre, orchard 0.25 acre.
- **Outside amenities :**  
BBQ, yard table(s), 4 yard seat(s), yard seated area, climbing frame



master bedroom

### Services

- **washing :**  
Sheets supplement (1 X / per week +\$12\*), Towels supplement (1 X / per week), Comforter(s), Comforter(s), Pillows
- **Single family home :**  
Cleaning supplement (1 X / per week +\$35\*), Yard/swimming pool maintenance, Parking

### For your guidance

- **For your guidance**  
Kids welcome  
Pets accepted under certain conditions (ask the owner)  
Present on site : pets, farm animals  
Cell phone network coverage, personal transport advisable  
Water : hot/cold  
Local voltage supply : 220-240V / 50Hz  
Electricity supply : mains



furnishings



Photo album - 1



view from the covered terrace



kitchen



Guest facilities and furnishings



view from the apartment



furnishings



Photo album - 2



master bedroom



bunk beds



Covered swimming pool



shower room



orchard



General



## Location



## Location & Access



GPS coordinates in degrees, minutes, seconds: Latitude 49°42'6"N - Longitude 0°13'36"E ([Dwelling](#))

### Address

→ 74 route d'Étretat  
76790 Étretat

→ Time : 10'

### • Freeway (exit) A131

→ Tancarville, Seine Maritime, Upper Normandy, France  
→ Distance : 23mi.  
→ Time : 45'

• Fécamp : (8.7mi.)

### • Railroad station Bréauté Beuzeville

→ Bréauté, Seine Maritime, Upper Normandy, France  
→ Distance : 15.5mi.  
→ Time : 30'

### • Bus station Le Manoir

→ Bordeaux Saint Clair, Seine Maritime, Upper Normandy, France  
→ Distance : 0.3mi.

## Contact

Spoken languages



Gîte - Self Catering  
Étretat - France  
"La Pépinière"

Availability calendar - from : october 2017

Oct	Su	M	Tu	W	Th	F	Sa	Su	M	Tu	W	Th	F	Sa	Su	M	Tu	W	Th	F	Sa	Su	M	Tu							
2017	1	2	3	4	5	6	7	8	9	10	11	12	13	14	15	16	17	18	19	20	21	22	23	24	25	26	27	28	29	30	31

Nov	W	Th	F	Sa	Su	M	Tu	W	Th	F	Sa	Su	M	Tu	W	Th	F	Sa	Su	M	Tu	W	Th								
2017	1	2	3	4	5	6	7	8	9	10	11	12	13	14	15	16	17	18	19	20	21	22	23	24	25	26	27	28	29	30	

Dec	F	Sa	Su	M	Tu	W	Th	F	Sa	Su	M	Tu	W	Th	F	Sa	Su	M	Tu	W	Th	F	Sa	Su							
2017	1	2	3	4	5	6	7	8	9	10	11	12	13	14	15	16	17	18	19	20	21	22	23	24	25	26	27	28	29	30	31

Jan	M	Tu	W	Th	F	Sa	Su	M	Tu	W	Th	F	Sa	Su	M	Tu	W	Th	F	Sa	Su	M	Tu	W							
2018	1	2	3	4	5	6	7	8	9	10	11	12	13	14	15	16	17	18	19	20	21	22	23	24	25	26	27	28	29	30	31

Feb	Th	F	Sa	Su	M	Tu	W	Th	F	Sa	Su	M	Tu	W	Th	F	Sa	Su	M	Tu	W									
2018	1	2	3	4	5	6	7	8	9	10	11	12	13	14	15	16	17	18	19	20	21	22	23	24	25	26	27	28		

Mar	Th	F	Sa	Su	M	Tu	W	Th	F	Sa	Su	M	Tu	W	Th	F	Sa	Su	M	Tu	W	Th	F	Sa							
2018	1	2	3	4	5	6	7	8	9	10	11	12	13	14	15	16	17	18	19	20	21	22	23	24	25	26	27	28	29	30	31

Apr	Su	M	Tu	W	Th	F	Sa	Su	M	Tu	W	Th	F	Sa	Su	M	Tu	W	Th	F	Sa	Su	M	Tu	W	Th	F	Sa	Su	M	
2018	1	2	3	4	5	6	7	8	9	10	11	12	13	14	15	16	17	18	19	20	21	22	23	24	25	26	27	28	29	30	

May	Tu	W	Th	F	Sa	Su	M	Tu	W	Th	F	Sa	Su	M	Tu	W	Th	F	Sa	Su	M	Tu	W	Th	F	Sa	Su	M	Tu	W	Th	
2018	1	2	3	4	5	6	7	8	9	10	11	12	13	14	15	16	17	18	19	20	21	22	23	24	25	26	27	28	29	30	31	

June	F	Sa	Su	M	Tu	W	Th	F	Sa	Su	M	Tu	W	Th	F	Sa	Su	M	Tu	W	Th	F	Sa								
2018	1	2	3	4	5	6	7	8	9	10	11	12	13	14	15	16	17	18	19	20	21	22	23	24	25	26	27	28	29	30	

Jul	Su	M	Tu	W	Th	F	Sa	Su	M	Tu	W	Th	F	Sa	Su	M	Tu	W	Th	F	Sa	Su	M	Tu							
2018	1	2	3	4	5	6	7	8	9	10	11	12	13	14	15	16	17	18	19	20	21	22	23	24	25	26	27	28	29	30	31

Mid season  Low season

Gîte - Self Catering  
Seine Maritime - Upper Normandy  
"La Pépinière"

8

[Book now](#)

Availability calendar - from : july 2018

Aug	W	Th	F	Sa	Su	M	Tu	W	Th	F	Sa	Su	M	Tu	W	Th	F	Sa	Su	M	Tu	W	Th	F	Sa	Su	M	Tu	W	Th	F
2018	1	2	3	4	5	6	7	8	9	10	11	12	13	14	15	16	17	18	19	20	21	22	23	24	25	26	27	28	29	30	31
-	-	-	-	-	-	-	-	-	-	-	-	-	-	-	-	-	-	-	-	-	-	-	-	-	-	-	-	-	-	-	-

Sep	Sa	Su	M	Tu	W	Th	F	Sa	Su	M	Tu	W	Th	F	Sa	Su	M	Tu	W	Th	F	Sa	Su							
2018	1	2	3	4	5	6	7	8	9	10	11	12	13	14	15	16	17	18	19	20	21	22	23	24	25	26	27	28	29	30
-	-	-	-	-	-	-	-	-	-	-	-	-	-	-	-	-	-	-	-	-	-	-	-	-	-	-	-	-	-	-



Mid season



Low season

[Month : Next >>](#)

Rental rates - Gîte - Self Catering - Apartment-Flat - from 2 to 5 Person(s)

Rates	Night	Weekend	week	2 weeks	Month
Low season	-	\$233* (Friday)	\$387*	\$586*	\$1161*
Mid season	-	\$233* (Friday)	\$452* (Saturday)	-	-
High season	-	-	\$586* (Saturday)	-	-
Festive specials	\$117* (Thursday) > 2	-	-	-	-
Promotional period	-	-	\$281* (Monday)	-	-

(Check-in day) > Minimum Night

[Book now](#)





Guest facilities and furnishings

view from the apartment

furnishings



view from the covered terrace

kitchen

### Booking conditions

#### • Reservation

- Payment made upon reservation : 25% of rental sum
- Payment balance : on handing over the keys
- Deposit required : \$176\*

#### • rentals

- Service charges included
- Day tax included
- Cleaning charge levy on departure : \$35\*
- Anticipated supplement for :
  - animals

### Accepted methods of payment

- Bank transfer (wire)
- Check
- Cash
- Holiday coupon

[▶ Book now](#)

[▶ Contact the owner](#)

Contact directly the property owners

[www.iha.com](http://www.iha.com)

Advert No.

6814

[>> Book now <<](#)

### Contact

Spoken languages



\* Converted at the rate indicated : €100 = \$117.29 = £89.59

Advert No. 6814

[www.iha.com](http://www.iha.com)

