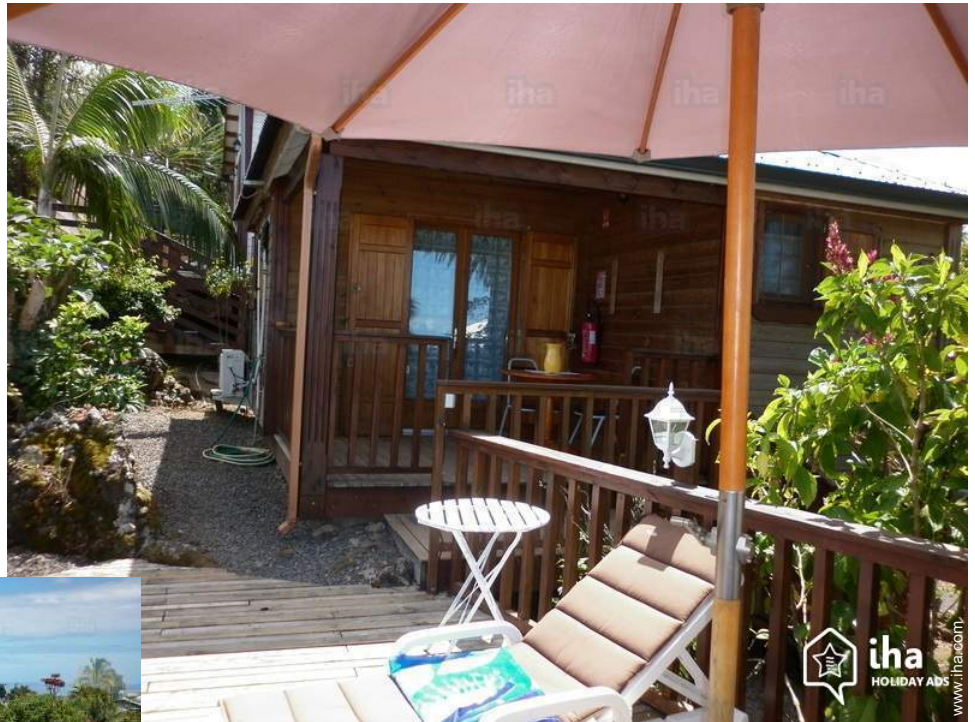


Gîte - Self Catering La Rivière (Rivière Saint Louis) "Les Caps Iles"



Gîte - Self Catering - Wooden House, detached, single storey, separate entrance, in(on) a(an) Private property

Setting : exotic, peaceful

Capacity : from 1 to 2 person(s)

Bedroom(s) : 1

Room(s) : 2

La Rivière (Rivière Saint Louis)

Reunion Island

Advert No. 42492

Reservation : +262 (0) 2 62 39 86 29 (Reunion Island)

www.iha.com



Gîte - Self Catering



Gîte - Self Catering - Wooden House, detached, single storey, separate entrance, in(on) a(an) Private property

- **Ideal for couples, couples with baby**
- **View** : unobscured, not overlooked, sea/ocean, mountain, village, fantastic sunset
- **Setting** : exotic, peaceful

Assets

- **Parking** :
Parking uncovered : 1 reserved stall.



view from the house

Surroundings & location



City

Leisure

- **Leisure activities less than 12 miles :**

Bathing, snorkelling, scuba diving, surfing, golf, coastal/forest paths, hiking, rappel, parascending, boat trips, horse trekking, go-karting, deep-sea fishing, pétanque field

- **Attractions and relaxation :**

Bar/pub, discotheque, restaurant, movie theater, casino

Surroundings

- **Locality :**

Heated swimming pool 1.85mi.
Sea/ocean 9mi.
18 hole golf course 9mi.
Surfing spots 12.5mi.
River 3mi.
Forest 9mi.
Mountain range 18.5mi.
Marina 9mi.

- **Amenities :**

Village center 330'
Bus stop / bus station 330'
Car rental 3mi.
Breadstore 330'
Caterer 330'
Local stores 330'
Supermarket 1.85mi.
Hairdressing salon 330'
Mail office 1.85mi.
Bank 1.85mi.
ATM 1.85mi.
Drugstore 330'
Doctor 330'
Nurse 330'
Hospital 9mi.



bedroom



Interior layout



shower room

Interior

- **Receive up to :**
from 1 to 2 person(s)
- **Liveable floor area :**
270 Sq.ft.
- **Interior layout :**
2 Room(s), 1 bedroom(s), 1 shower room, 1 toilets, dining area
- **Sleeps - bed(s) :**
1 full bed(s), 1 baby cradle
- **Guest facilities :**
T.V., board games, t.v points, wifi, cupboard, Hanging wardrobe, hair dryer, mosquito nets, fully air-conditioned, Drapes, Double glazed
- **Appliances :**
Crockery/flatware, kitchen utensils, cafetiere, toaster, juicer, electric hobs, mini-oven, micro-wave oven, extractor hood, refridgerator, deep freeze, washing machine, vacuum cleaner, iron, ironing board

Exterior

- **Ground surface :**
0.37 acre
- **Outside accommodation :**
Terrace 110 Sq.ft., covered terrace 85 Sq.ft.
- **Outside setting :**
Enclosed grounds 0.37 acre, tropical garden > 0.25 acre
- **Outside amenities :**
BBQ, yard table(s), 2 yard seat(s), parasol, 2 chaise(s) longue(s)



view from the garden/park

Services

- **washing :**
Sheets, Towels, Linen, Comforter(s), Pillows
- **Single family home :**
Cleaning on departure supplement (+\$23*)

For your guidance

- **For your guidance**
No pet allowed
Cell phone network coverage, personal transport advisable
Water : hot/cold
Local voltage supply : 220-240V / 50Hz
Electricity supply : mains



view from the bedroom

Photo album - 1



view from the house



Interior layout



bedroom

Photo album - 2



shower room



view from the bedroom



view from the garden/park

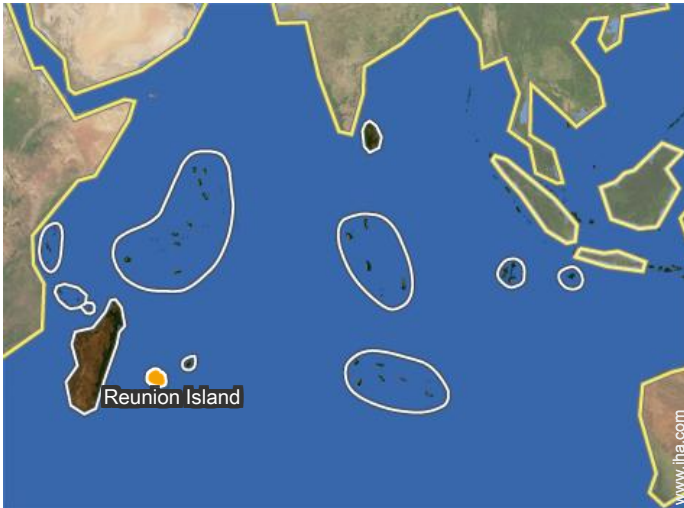


view from the garden/park



view from the garden/park

Location



Location & Access



GPS coordinates in degrees, minutes, seconds: Latitude 21° 16'9"S - Longitude 55°27'0"E ([Dwelling](#))

Address

→ 15 chemin des Ruches
97421 La Rivière (Rivière Saint Louis)

• Airport Roland Garros

→ Saint Denis (Reunion), Reunion Island
→ Distance : 46,5mi.
→ Time : 1h15'

- Cilaos : (18.5mi.)
- L'Étang Salé les Bains : (9mi.)
- Saint Pierre : (9mi.)

Contact

Spoken languages



Gîte - Self Catering
 La Rivière (Rivière Saint Louis) - Reunion Island
"Les Caps Iles"

Availability calendar - from : august 2018

Aug	W	Th	F	Sa	Su	M	Tu	W	Th	F	Sa	Su	M	Tu	W	Th	F	Sa	Su	M	Tu	W	Th	F	Sa	Su	M	Tu	W	Th	F
2018	1	2	3	4	5	6	7	8	9	10	11	12	13	14	15	16	17	18	19	20	21	22	23	24	25	26	27	28	29	30	31
																	-	-	-	-	-	-	-	-	-	-	-	-	-	-	-

Sep	Sa	Su	M	Tu	W	Th	F	Sa	Su	M	Tu	W	Th	F	Sa	Su	M	Tu	W	Th	F	Sa	Su							
2018	1	2	3	4	5	6	7	8	9	10	11	12	13	14	15	16	17	18	19	20	21	22	23	24	25	26	27	28	29	30
	-	-	-	-	-	-	-	-	-	-	-	-	-	-	-	-	-	-	-	-	-	-	-	-	-	-	-	-	-	-

Oct	M	Tu	W	Th	F	Sa	Su	M	Tu	W	Th	F	Sa	Su	M	Tu	W	Th	F	Sa	Su	M	Tu	W	Th	F	Sa	Su	M	Tu	W
2018	1	2	3	4	5	6	7	8	9	10	11	12	13	14	15	16	17	18	19	20	21	22	23	24	25	26	27	28	29	30	31
	-	-	-	-	-	-	-	-	-	-	-	-	-	-	-	-	-	-	-	-	-	-	-	-	-	-	-	-	-	-	-

Nov	Th	F	Sa	Su	M	Tu	W	Th	F	Sa	Su	M	Tu	W	Th	F	Sa	Su	M	Tu	W	Th	F	Sa	Su	M	Tu	W	Th	F
2018	1	2	3	4	5	6	7	8	9	10	11	12	13	14	15	16	17	18	19	20	21	22	23	24	25	26	27	28	29	30
	-	-	-	-	-	-	-	-	-	-	-	-	-	-	-	-	-	-	-	-	-	-	-	-	-	-	-	-	-	-

Dec	Sa	Su	M	Tu	W	Th	F	Sa	Su	M	Tu	W	Th	F	Sa	Su	M	Tu	W	Th	F	Sa	Su	M	Tu	W	Th	F	Sa	Su	M
2018	1	2	3	4	5	6	7	8	9	10	11	12	13	14	15	16	17	18	19	20	21	22	23	24	25	26	27	28	29	30	31
	-	-	-	-	-	-	-	-	-	-	-	-	-	-	-	-	-	-	-	-	-	-	-	-	-	-	-	-	-	-	-

Jan	Tu	W	Th	F	Sa	Su	M	Tu	W	Th	F	Sa	Su	M	Tu	W	Th	F	Sa	Su	M	Tu	W	Th	F	Sa	Su	M	Tu	W	Th
2019	1	2	3	4	5	6	7	8	9	10	11	12	13	14	15	16	17	18	19	20	21	22	23	24	25	26	27	28	29	30	31
	-	-	-	-	-	-	-	-	-	-	-	-	-	-	-	-	-	-	-	-	-	-	-	-	-	-	-	-	-	-	-

Feb	F	Sa	Su	M	Tu	W	Th	F	Sa	Su	M	Tu	W	Th	F	Sa	Su	M	Tu	W	Th	F	Sa	Su	M	Tu	W	Th	
2019	1	2	3	4	5	6	7	8	9	10	11	12	13	14	15	16	17	18	19	20	21	22	23	24	25	26	27	28	
	-	-	-	-	-	-	-	-	-	-	-	-	-	-	-	-	-	-	-	-	-	-	-	-	-	-	-	-	-

Mar	F	Sa	Su	M	Tu	W	Th	F	Sa	Su	M	Tu	W	Th	F	Sa	Su	M	Tu	W	Th	F	Sa	Su	M	Tu	W	Th	F	Sa	Su
2019	1	2	3	4	5	6	7	8	9	10	11	12	13	14	15	16	17	18	19	20	21	22	23	24	25	26	27	28	29	30	31
	-	-	-	-	-	-	-	-	-	-	-	-	-	-	-	-	-	-	-	-	-	-	-	-	-	-	-	-	-	-	-

Apr	M	Tu	W	Th	F	Sa	Su	M	Tu	W	Th	F	Sa	Su	M	Tu	W	Th	F	Sa	Su	M	Tu	W	Th	F	Sa	Su	M	Tu
2019	1	2	3	4	5	6	7	8	9	10	11	12	13	14	15	16	17	18	19	20	21	22	23	24	25	26	27	28	29	30
	-	-	-	-	-	-	-	-	-	-	-	-	-	-	-	-	-	-	-	-	-	-	-	-	-	-	-	-	-	-

May	W	Th	F	Sa	Su	M	Tu	W	Th	F	Sa	Su	M	Tu	W	Th	F	Sa	Su	M	Tu	W	Th	F	Sa	Su	M	Tu	W	Th	F
2019	1	2	3	4	5	6	7	8	9	10	11	12	13	14	15	16	17	18	19	20	21	22	23	24	25	26	27	28	29	30	31
	-	-	-	-	-	-	-	-	-	-	-	-	-	-	-	-	-	-	-	-	-	-	-	-	-	-	-	-	-	-	-

Gîte - Self Catering
La Rivière (Rivière Saint Louis) - Reunion Island
"Les Caps Iles"

8

[Book now](#)

Availability calendar - from : may 2019

June	Sa	Su	M	Tu	W	Th	F	Sa	Su	M	Tu	W	Th	F	Sa	Su	M	Tu	W	Th	F	Sa	Su	M	Tu	W	Th	F	Sa	Su
2019	1	2	3	4	5	6	7	8	9	10	11	12	13	14	15	16	17	18	19	20	21	22	23	24	25	26	27	28	29	30
-	-	-	-	-	-	-	-	-	-	-	-	-	-	-	-	-	-	-	-	-	-	-	-	-	-	-	-	-	-	

Jul	M	Tu	W	Th	F	Sa	Su	M	Tu	W	Th	F	Sa	Su	M	Tu	W	Th	F	Sa	Su	M	Tu	W							
2019	1	2	3	4	5	6	7	8	9	10	11	12	13	14	15	16	17	18	19	20	21	22	23	24	25	26	27	28	29	30	31
-	-	-	-	-	-	-	-	-	-	-	-	-	-	-	-	-	-	-	-	-	-	-	-	-	-	-	-	-	-		

[Month : Next >>](#)

Rental rates - Gîte - Self Catering - Wooden House - from 1 to 2 Person(s)

Rates	Night	Weekend	week	2 weeks	Month
 Low season	-	\$117*	\$339*	\$654*	\$876*
 Mid season	-	\$117*	\$339*	\$654*	\$876*
 High season	-	\$117*	\$339*	\$654*	\$876*

[Book now](#)

Booking conditions

• Reservation

- Payment made upon reservation : 30% of rental sum
- Payment balance : on handing over the keys
- Deposit required : \$339*

• rentals

- Service charges included
- Day tax included
- Cleaning charge levy on departure : \$23*

[▶ Book now](#)

[▶ Contact the owner](#)

Accepted methods of payment

- International Money Order
- Check
- Cash

Contact directly the property owners

www.iha.com
Advert No.
42492
[>> Book now <<](#)

Contact

Spoken languages



* Converted at the rate indicated : €100 = \$116.85 = £89

Advert No. 42492

www.iha.com



[>> VACATION HOMES](#)

DIRECT BY OWNERS