

Gîte - Self Catering Livramento Traditional accommodation



Gîte - Self Catering - Traditional accommodation, detached, 1 floor, separate entrance, in(on) a(an) Property

Setting : tranquil

Capacity : from 2 to 6 person(s)

Bedroom(s) : 3

Room(s) : 6

Livramento - São Miguel Island - Eastern Group
Azores

Advert No. 30228

www.iha.com



>> VACATION HOMES

DIRECT BY OWNERS

Gîte - Self Catering



Gîte - Self Catering - Traditional accommodation, detached, 1 floor, separate entrance, in(on) a(an) Property

- **Ideal for family, large families**
- **View** : panoramic, unobscured, not overlooked, sea/ocean, garden/park, fantastic sunset
- **Setting** : tranquil

Assets

- **Parking** :
Parking uncovered : 3 off road.
- **Advantages** :
Darts
- **baby equipment** :
High chair



bedroom

Surroundings & location



Mountain



Golf



Horse riding

Surroundings

- **Locality** :
Sea/ocean 0.62mi.
Sandy beach 0.62mi.
18 hole golf course 1.25mi.



overall view



bedroom



dining room

Interior

- **Receive up to :**
from 2 to 6 person(s)
- **Interior layout :**
6 Room(s), 3 bedroom(s), living room, separate kitchen, dining room, reception hall
- **Sleeps - bed(s) :**
1 full bed(s), 4 twin bed(s)
- **Guest facilities :**
T.V., wifi, wardrobe, cupboard, Hanging wardrobe, hair dryer, electric heating, Drapes
- **Appliances :**
Crockery/flatware, kitchen utensils, electric coffee maker, electric kettle, toaster, juicer, meat broiler, electric stove, mini-oven, microwave oven, deep freeze, washing machine, vacuum cleaner, iron, ironing board

Exterior

- **Outside accommodation :**
Terrace 215 Sq.ft., roof terrace 215 Sq.ft., balcony
- **Outside setting :**
Enclosed grounds, yard



kitchen

Services

- **washing :**
Sheets, Towels, Linen, Comforter(s), Comforter(s), Pillows
- **Single family home :**
Cleaning supplement (2 X / per week +\$59*), Cleaning on departure

For your guidance

- **For your guidance**
Kids welcome
No pet allowed
Cell phone network coverage
Water : hot/cold
Local voltage supply : 220-240V / 50Hz
Electricity supply : mains



bedroom

Photo album - 1



bedroom



bedroom



overall view



dining room

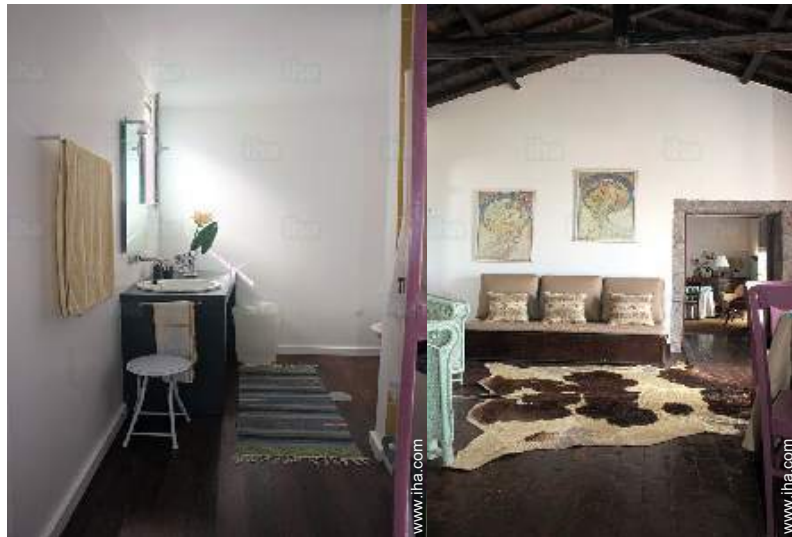


bedroom

Photo album - 2



kitchen



view from the dining-room



dining room

yard

[Favourite photo gallery - 1](#)



May 2017



May 2017

Location



Location & Access



GPS coordinates in degrees, minutes, seconds: Latitude 37°44'44"N - Longitude 25°35'26"W ([Dwelling](#))

Address

→ Rua Nossa Senhora das Necessidades,
101
9500 Livramento

• Airport João Paulo II

→ Ponta Delgada, São Miguel Island,
Eastern Group, Azores
→ Distance : 7,5mi.
→ Time : 15'

- Ponta Delgada : (3mi.)
- Ribeira Grande : (11,2mi.)
- Lagoa : (4.5mi.)

Contact

Spoken languages



Gîte - Self Catering

São Miguel Island - Eastern Group

Traditional accommodation

Availability calendar - from : january 2018

Jan	M	Tu	W	Th	F	Sa	Su	M	Tu	W	Th	F	Sa	Su	M	Tu	W	Th	F	Sa	Su	M	Tu	W	Th	F	Sa	Su	M	Tu	W
2018	1	2	3	4	5	6	7	8	9	10	11	12	13	14	15	16	17	18	19	20	21	22	23	24	25	26	27	28	29	30	31
																					-	-	-	-	-	-	-	-	-	-	

Feb	Th	F	Sa	Su	M	Tu	W	Th	F	Sa	Su	M	Tu	W	Th	F	Sa	Su	M	Tu	W	Th	F	Sa	Su	M	Tu	W	
2018	1	2	3	4	5	6	7	8	9	10	11	12	13	14	15	16	17	18	19	20	21	22	23	24	25	26	27	28	
	-	-	-	-	-	-	-	-	-	-	-	-	-	-	-	-	-	-	-	-	-	-	-	-	-	-	-	-	-

Mar	Th	F	Sa	Su	M	Tu	W	Th	F	Sa	Su	M	Tu	W	Th	F	Sa	Su	M	Tu	W	Th	F	Sa	Su	M	Tu	W	Th	F	Sa
2018	1	2	3	4	5	6	7	8	9	10	11	12	13	14	15	16	17	18	19	20	21	22	23	24	25	26	27	28	29	30	31
	-	-	-	-	-	-	-	-	-	-	-	-	-	-	-	-	-	-	-	-	-	-	-	-	-	-	-	-	-		

Apr	Su	M	Tu	W	Th	F	Sa	Su	M	Tu	W	Th	F	Sa	Su	M	Tu	W	Th	F	Sa	Su	M	Tu	W	Th	F	Sa	Su	M
2018	1	2	3	4	5	6	7	8	9	10	11	12	13	14	15	16	17	18	19	20	21	22	23	24	25	26	27	28	29	30
	-	-	-	-	-	-	-	-	-	-	-	-	-	-	-	-	-	-	-	-	-	-	-	-	-	-	-	-	-	

May	Tu	W	Th	F	Sa	Su	M	Tu	W	Th	F	Sa	Su	M	Tu	W	Th	F	Sa	Su	M	Tu	W	Th	F	Sa	Su	M	Tu	W	Th
2018	1	2	3	4	5	6	7	8	9	10	11	12	13	14	15	16	17	18	19	20	21	22	23	24	25	26	27	28	29	30	31
	-	-	-	-	-	-	-	-	-	-	-	-	-	-	-	-	-	-	-	-	-	-	-	-	-	-	-	-	-	-	

June	F	Sa	Su	M	Tu	W	Th	F	Sa	Su	M	Tu	W	Th	F	Sa	Su	M	Tu	W	Th	F	Sa	Su	M	Tu	W	Th	F	Sa
2018	1	2	3	4	5	6	7	8	9	10	11	12	13	14	15	16	17	18	19	20	21	22	23	24	25	26	27	28	29	30
	-	-	-	-	-	-	-	-	-	-	-	-	-	-	-	-	-	-	-	-	-	-	-	-	-	-	-	-	-	

Jul	Su	M	Tu	W	Th	F	Sa	Su	M	Tu	W	Th	F	Sa	Su	M	Tu	W	Th	F	Sa	Su	M	Tu	W	Th	F	Sa	Su	M	Tu
2018	1	2	3	4	5	6	7	8	9	10	11	12	13	14	15	16	17	18	19	20	21	22	23	24	25	26	27	28	29	30	31
	-	-	-	-	-	-	-	-	-	-	-	-	-	-	-	-	-	-	-	-	-	-	-	-	-	-	-	-	-	-	

Aug	W	Th	F	Sa	Su	M	Tu	W	Th	F	Sa	Su	M	Tu	W	Th	F	Sa	Su	M	Tu	W	Th	F	Sa	Su	M	Tu	W	Th	F
2018	1	2	3	4	5	6	7	8	9	10	11	12	13	14	15	16	17	18	19	20	21	22	23	24	25	26	27	28	29	30	31
	-	-	-	-	-	-	-	-	-	-	-	-	-	-	-	-	-	-	-	-	-	-	-	-	-	-	-	-	-	-	

Sep	Sa	Su	M	Tu	W	Th	F	Sa	Su	M	Tu	W	Th	F	Sa	Su	M	Tu	W	Th	F	Sa	Su	M	Tu	W	Th	F	Sa	Su
2018	1	2	3	4	5	6	7	8	9	10	11	12	13	14	15	16	17	18	19	20	21	22	23	24	25	26	27	28	29	30
	-	-	-	-	-	-	-	-	-	-	-	-	-	-	-	-	-	-	-	-	-	-	-	-	-	-	-	-	-	

Oct	M	Tu	W	Th	F	Sa	Su	M	Tu	W	Th	F	Sa	Su	M	Tu	W	Th	F	Sa	Su	M	Tu	W	Th	F	Sa	Su	M	Tu	W
2018	1	2	3	4	5	6	7	8	9	10	11	12	13	14	15	16	17	18	19	20	21	22	23	24	25	26	27	28	29	30	31
	-	-	-	-	-	-	-	-	-	-	-	-	-	-	-	-	-	-	-	-	-	-	-	-	-	-	-	-	-		

Low season
 Mid season
 High season



Gîte - Self Catering
Livramento - Azores
Traditional accommodation


9

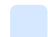
[Book now](#)


Availability calendar - from : october 2018

Nov	Th	F	Sa	Su	M	Tu	W	Th	F	Sa	Su	M	Tu	W	Th	F	Sa	Su	M	Tu	W	Th	F	Sa	Su	M	Tu	W	Th	F
2018	1	2	3	4	5	6	7	8	9	10	11	12	13	14	15	16	17	18	19	20	21	22	23	24	25	26	27	28	29	30
-	-	-	-	-	-	-	-	-	-	-	-	-	-	-	-	-	-	-	-	-	-	-	-	-	-	-	-	-	-	-

Dec	Sa	Su	M	Tu	W	Th	F	Sa	Su	M	Tu	W	Th	F	Sa	Su	M	Tu	W	Th	F	Sa	Su	M							
2018	1	2	3	4	5	6	7	8	9	10	11	12	13	14	15	16	17	18	19	20	21	22	23	24	25	26	27	28	29	30	31
-	-	-	-	-	-	-	-	-	-	-	-	-	-	-	-	-	-	-	-	-	-	-	-	-	-	-	-	-	-	-	

 Low season

 Mid season

 High season

[Month : Next >>](#)

Rental rates - Gîte - Self Catering - Traditional accommodation - from 2 to 6 Person(s)

Rates	Night	Weekend	week	2 weeks	Month
 Low season	\$104*	\$387*	\$645*	-	\$1994*
 Mid season	\$129*	\$528*	\$821*	-	\$2932*
 High season	\$223*	\$469*	\$1290*	-	\$5982*

[Book now](#)

Booking conditions

• Reservation

- Payment made upon reservation : 35% of rental sum
- Payment balance : 1 week before the stay
- Deposit required : \$235*

• rentals

- Service charges included
- Day tax in addition
- Cleaning charge levy on departure : \$59*
- Anticipated supplement for :
 - baby
 - supplementary bed(s)
 - firewood

Accepted methods of payment

- Cash

[▶ Book now](#)

[▶ Contact the owner](#)

Contact directly the property owners

www.iha.com
Advert No.
30228
[>> Book now <<](#)

Contact

Spoken languages



* Converted at the rate indicated : €100 = \$117.29 = £89.59

Advert No. 30228

www.iha.com



[>> VACATION HOMES](#)

DIRECT BY OWNERS