

# Gîte - Self Catering Müritz National Park Charming House



Gîte - Self Catering - Charming House, detached, single storey, separate entrance, in(on) a(an) Resort

Setting : waterfront, pleasant

Capacity : from 4 to 10 person(s)

Bedroom(s) : 4

Room(s) : 6



Deutscher Tourismusverband (5 stars)

Röbel - Mecklenburg Western Pomerania

Germany

Reservation : +49 (0) 23919103028 (Germany)

Advert No. 46943

www.iha.com



>> VACATION HOMES

DIRECT BY OWNERS

## Gîte - Self Catering



Gîte - Self Catering - Charming House, detached, single storey, separate entrance, in(on) a(an) Resort

- **Ideal for family, all age groups**
- **View** : unobscured, country side, farmland, prairie, lake, fantastic sunset
- **Setting** : waterfront, pleasant
- **Exposure** : South-east

## Assets

- **Parking** :  
Parking uncovered : 3 off road.
- **Advantages** :  
Sauna, jacuzzi
- **baby equipment** :  
High chair, comfort station



view from the terrace

## Surroundings & location



Countryside



Fishing



Culture

### Leisure

- **Leisure activities less than 12 miles :**

Cross-country skiing, bathing, pedalo, snorkelling, scuba diving, sailing, canoeing, golf, tennis, pathway/broadwalk, coastal/forest paths, hiking, rappel, mountain bike (path), boat trips, horse-drawn carriage, mini-golf, fishing, fishing

- **Supervised :**

Sailing school, riding school

- **Attractions and relaxation :**

Bar/pub, restaurant, movie theater, park and garden, zoo/animal park, sea world, nature reserve, historical site, museum, summer theater, local craftstore, natural spring baths, thermal baths, Bio farm

### Surroundings

- **Locality :**

Heated swimming pool 0.93mi.  
Public swimming pool 990'  
Public tennis court 6mi.  
18 hole golf course 6mi.  
Lake  
Forest  
Marina 0.93mi.

- **Amenities :**

Downtown 0.93mi.  
Bus stop / bus station 0.93mi.  
Bike/mountain bike hire <165'  
Boat rental 990'  
Breadstore 0.62mi.  
Local stores 0.62mi.  
Supermarket 0.62mi.  
Mail office 0.93mi.  
Bank 0.93mi.  
ATM 0.93mi.  
Drugstore 0.93mi.  
Hospital 12.5mi.



living room



terrace

Gîte - Self Catering  
Mecklenburg Western Pomerania - Müritz National Park  
Charming House

3

[Book now](#)



kitchen

### Interior

- **Receive up to :**  
from 4 to 10 person(s) (8 adults, 2 kids)
- **Liveable floor area :**  
1,600 Sq.ft.
- **Interior layout :**  
6 Room(s), 4 bedroom(s), 2 bathroom, 1 shower room, 2 toilets, living room 215 Sq. ft., separate kitchen, dining area
- **Sleeps - bed(s) :**  
3 full bed(s), 1 sleeper sofa(s) 2 pers, 1 twin bed(s), 1 baby cradle, 1 possible extra bed(s)
- **Guest facilities :**  
T.V., DVD player, board games, cable/satellite, wifi, wardrobe, cupboard, Hanging wardrobe, hair dryer, heated towel rail, fly screens, central heating, solid fuel burning stoves, Drapes, Blinds, Double glazed, Rolling shutters, electric shutters, fire alarm
- **Appliances :**  
Crockery/flatware, kitchen utensils, cafetiere, electric coffee maker, electric espresso coffee maker, electric kettle, toaster, food processor, electric raclette set, fondue set, electric stove, electric hobs, oven, microwave oven, extractor hood, refrigerator, deep freeze, dish washer, washing machine, clothes dryer, vacuum cleaner, iron, ironing board

### Exterior

- **Ground surface :**  
4,300 Sq.ft.
- **Outside accommodation :**  
Terrace 270 Sq.ft., yard shed
- **Outside setting :**  
Lawn
- **Outside amenities :**  
BBQ, yard table(s), 8 yard seat(s), parasol, 2 sun recliner(s)



baby cradle

### Services

- **washing :**  
Sheets (1 X / per week), Towels (1 X / per week), Linen (1 X / per week), Beach towels (1 X / per week), Comforter(s) (1 X / per week), Pillows (1 X / per week)
- **Single family home :**  
Cleaning on departure, Snow clearance, Caretaker/concierge, Parking
- **Personnel :**  
Laundry

### For your guidance

- **For your guidance**  
Kids welcome  
Pets accepted under certain conditions (ask the owner)  
Non smoking rental  
Water : hot/cold  
Local voltage supply : 220-240V / 50Hz  
Electricity supply : mains



bedroom

Advert No. 46943

[www.iha.com](http://www.iha.com)



>> VACATION HOMES

DIRECT BY OWNERS



Floor plan

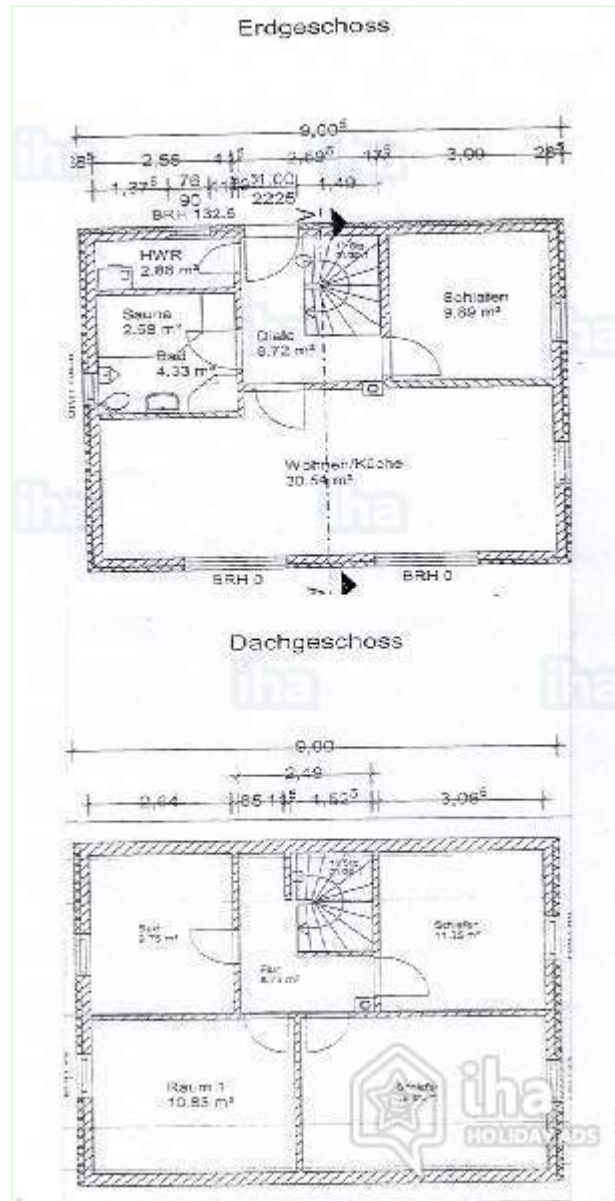


Photo album - 1



view from the terrace



terrace



living room



kitchen



bedroom



Photo album - 2



baby cradle



bedroom



twin bed(s)



sleeper sofa(s) 2 pers



bathroom



jacuzzi



bathroom



sauna



Hanging wardrobe

Photo album - 3



furniture

Interior facilities

solid fuel burning stoves



Assets



view from the bedroom



Fishing



Cities close by



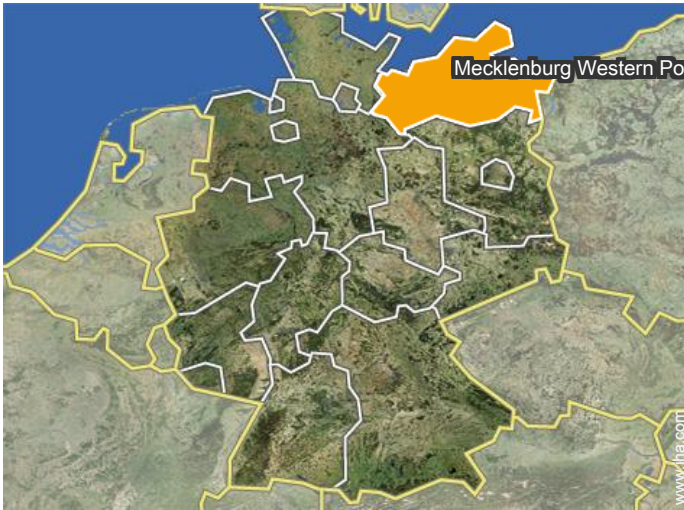
downtown



Surroundings



### Location



### Location & Access



GPS coordinates in degrees, minutes, seconds: Latitude 53°23'55"N - Longitude 12°37'20"E ([Dwelling](#))

#### Address

→ Unter den Kiefern 75  
17207 Röbel

#### • Freeway (exit) A 19 Röbel

→ Leizen, Mecklenburg Western Pomerania, Germany  
→ Distance : 6mi.  
→ Time : 10'

#### • Railroad station Waren (Müritz)

→ Waren (Müritz), Mecklenburg Western Pomerania, Germany  
→ Distance : 12.5mi.  
→ Time : 30'

#### • Airport Rostock Laage

→ Rostock, Mecklenburg Western Pomerania, Germany  
→ Distance : 50mi.

→ Time : 1h

- Röbel : (1.85mi.)
- Rostock : (50mi.)
- Stralsund : (81mi.)

### Contact

Spoken languages





Gîte - Self Catering  
Röbel - Müritz National Park  
Charming House

[Book now](#)

Availability calendar - from : february 2019

Feb	F	Sa	Su	M	Tu	W	Th	F	Sa	Su	M	Tu	W	Th	F	Sa	Su	M	Tu	W	Th	F	Sa	Su	M	Tu	W	Th
2019	1	2	3	4	5	6	7	8	9	10	11	12	13	14	15	16	17	18	19	20	21	22	23	24	25	26	27	28

Mar	F	Sa	Su	M	Tu	W	Th	F	Sa	Su	M	Tu	W	Th	F	Sa	Su	M	Tu	W	Th	F	Sa	Su	M	Tu	W	Th	F	Sa	Su
2019	1	2	3	4	5	6	7	8	9	10	11	12	13	14	15	16	17	18	19	20	21	22	23	24	25	26	27	28	29	30	31
	-	-	-	-	-	-	-	-	-	-	-	-	-	-	-	-	-	-	-	-	-	-	-	-	-	-	-	-	-	-	-

Apr	M	Tu	W	Th	F	Sa	Su	M	Tu	W	Th	F	Sa	Su	M	Tu	W	Th	F	Sa	Su	M	Tu	W	Th	F	Sa	Su	M	Tu
2019	1	2	3	4	5	6	7	8	9	10	11	12	13	14	15	16	17	18	19	20	21	22	23	24	25	26	27	28	29	30
	-	-	-	-	-	-	-	-	-	-	-	-	-	-	-	-	-	-	-	-	-	-	-	-	-	-	-	-	-	-

May	W	Th	F	Sa	Su	M	Tu	W	Th	F	Sa	Su	M	Tu	W	Th	F	Sa	Su	M	Tu	W	Th	F	Sa	Su	M	Tu	W	Th	F
2019	1	2	3	4	5	6	7	8	9	10	11	12	13	14	15	16	17	18	19	20	21	22	23	24	25	26	27	28	29	30	31
	-	-	-	-	-	-	-	-	-	-	-	-	-	-	-	-	-	-	-	-	-	-	-	-	-	-	-	-	-	-	-

June	Sa	Su	M	Tu	W	Th	F	Sa	Su	M	Tu	W	Th	F	Sa	Su	M	Tu	W	Th	F	Sa	Su	M	Tu	W	Th	F	Sa	Su
2019	1	2	3	4	5	6	7	8	9	10	11	12	13	14	15	16	17	18	19	20	21	22	23	24	25	26	27	28	29	30
	-	-	-	-	-	-	-	-	-	-	-	-	-	-	-	-	-	-	-	-	-	-	-	-	-	-	-	-	-	-

Jul	M	Tu	W	Th	F	Sa	Su	M	Tu	W	Th	F	Sa	Su	M	Tu	W	Th	F	Sa	Su	M	Tu	W	Th	F	Sa	Su	M	Tu	W
2019	1	2	3	4	5	6	7	8	9	10	11	12	13	14	15	16	17	18	19	20	21	22	23	24	25	26	27	28	29	30	31
	-	-	-	-	-	-	-	-	-	-	-	-	-	-	-	-	-	-	-	-	-	-	-	-	-	-	-	-	-	-	-

Aug	Th	F	Sa	Su	M	Tu	W	Th	F	Sa	Su	M	Tu	W	Th	F	Sa	Su	M	Tu	W	Th	F	Sa	Su	M	Tu	W	Th	F	Sa
2019	1	2	3	4	5	6	7	8	9	10	11	12	13	14	15	16	17	18	19	20	21	22	23	24	25	26	27	28	29	30	31
	-	-	-	-	-	-	-	-	-	-	-	-	-	-	-	-	-	-	-	-	-	-	-	-	-	-	-	-	-	-	-

Sep	Su	M	Tu	W	Th	F	Sa	Su	M	Tu	W	Th	F	Sa	Su	M	Tu	W	Th	F	Sa	Su	M	Tu	W	Th	F	Sa	Su	M
2019	1	2	3	4	5	6	7	8	9	10	11	12	13	14	15	16	17	18	19	20	21	22	23	24	25	26	27	28	29	30
	-	-	-	-	-	-	-	-	-	-	-	-	-	-	-	-	-	-	-	-	-	-	-	-	-	-	-	-	-	-

Oct	Tu	W	Th	F	Sa	Su	M	Tu	W	Th	F	Sa	Su	M	Tu	W	Th	F	Sa	Su	M	Tu	W	Th	F	Sa	Su	M	Tu	W	Th
2019	1	2	3	4	5	6	7	8	9	10	11	12	13	14	15	16	17	18	19	20	21	22	23	24	25	26	27	28	29	30	31
	-	-	-	-	-	-	-	-	-	-	-	-	-	-	-	-	-	-	-	-	-	-	-	-	-	-	-	-	-	-	-

Nov	F	Sa	Su	M	Tu	W	Th	F	Sa	Su	M	Tu	W	Th	F	Sa	Su	M	Tu	W	Th	F	Sa	Su	M	Tu	W	Th	F	Sa
2019	1	2	3	4	5	6	7	8	9	10	11	12	13	14	15	16	17	18	19	20	21	22	23	24	25	26	27	28	29	30
	-	-	-	-	-	-	-	-	-	-	-	-	-	-	-	-	-	-	-	-	-	-	-	-	-	-	-	-	-	-



Gîte - Self Catering  
Mecklenburg Western Pomerania - Germany  
**Charming House**

10  
[Book now](#)

Availability calendar - from : november 2019





Dec	Su	M	Tu	W	Th	F	Sa	Su	M	Tu	W	Th	F	Sa	Su	M	Tu	W	Th	F	Sa	Su	M	Tu							
2019	1	2	3	4	5	6	7	8	9	10	11	12	13	14	15	16	17	18	19	20	21	22	23	24	25	26	27	28	29	30	31
-	-	-	-	-	-	-	-	-	-	-	-	-	-	-	-	-	-	-	-	-	-	-	-	-	-	-	-	-	-	-	

Jan	W	Th	F	Sa	Su	M	Tu	W	Th	F	Sa	Su	M	Tu	W	Th	F	Sa	Su	M	Tu	W	Th	F							
2020	1	2	3	4	5	6	7	8	9	10	11	12	13	14	15	16	17	18	19	20	21	22	23	24	25	26	27	28	29	30	31
-	-	-	-	-	-	-	-	-	-	-	-	-	-	-	-	-	-	-	-	-	-	-	-	-	-	-	-	-	-	-	

[Month : Next >>](#)

Rental rates - Gîte - Self Catering - Charming House - from 4 to 10 Person(s)

Rates	Night	Weekend	week	2 weeks	Month
 Low season	\$181* ↓ > 4	-	\$1145* (Saturday)	-	-
 Mid season	\$204* ↓ > 4	-	\$1309* (Saturday)	-	-
 High season	-	-	\$1472* (Saturday)	-	-
 Promotional period	\$158* ↓ > 4	-	\$982*	-	-

↓ Reducing rates (Check-in day) > Minimum Night

[Book now](#)

Booking conditions

• Reservation

- Payment made upon reservation : 20% of rental sum
- Payment balance : 3 weeks before the stay
- Deposit required : \$351\*

• rentals

- Service charges included
- Day tax in addition
- Cleaning charge on departure included
- Anticipated supplement for :
  - animals
  - supplementary bed(s)

Accepted methods of payment

- Bank transfer (wire)

[▶ Book now](#)

[▶ Contact the owner](#)

Contact directly the property owners

[www.iha.com](http://www.iha.com)  
Advert No.  
46943  
[>> Book now <<](#)

Contact

Spoken languages



\* Converted at the rate indicated : €100 = \$116.85 = £89

Advert No. 46943

[www.iha.com](http://www.iha.com)

