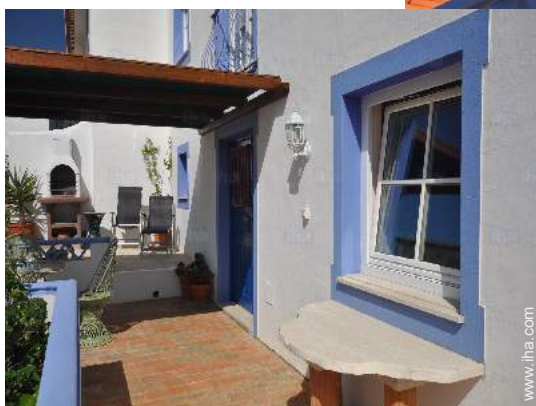


Gîte - Self Catering Salema "Studio Salema"

Apartment with beautiful uninterrupted outdoor area and sea views! Walk to the beach/village square in 4 min it is located in the fishing village of Salema located between SAGRES and Lagos.



Gîte - Self Catering - Luxury Studio
Flat first floor, separate entrance, in(on)
a(an) Typical House single storey

Setting : ocean, suitable for a relaxing
break

Capacity : from 1 to 3 person(s)

Salema - Algarve

Portugal

Advert No. 75312

www.iha.com



Gîte - Self Catering



Gîte - Self Catering - Luxury Studio Flat first floor, separate entrance, in(on) a(an) Typical House single storey

- Ideal for all age groups, couples with baby
- View : panoramic, dominant, sea/ocean, country side, village, nightlights
- Setting : ocean, suitable for a relaxing break
- Exposure : South-west

" Here you find still really instead of slabs or beds stronghold. It is located in a quiet hillside location in the old centre of the village with panoramic views. Below the apartment, a very narrow village street (no traffic) directly on the beach and in the village, past a leads no mini supermarket, where the owner speaks also german and 3 beach bars/ restaurants. Everything, even the bus stop, is 3-5 min. The outdoor area of this apartment is separately with a gate to the finish, and has a shady Pergola so that Sun or shade can choose. Since the terrace facing South West has you can see breathtaking sunsets but the sun comes only from noon to TerrasseVor the House you have a private parking lot with retractable bollards, so that no one else there can park his car. "

Assets

- Parking :
 Parking uncovered : 1 off road.
- baby equipment :
 High chair

Surroundings & location



Culture

" If you land in Faro and have no car, driving from the airport by bus to Faro and take the train to Lagos, a beautiful track from there. Lagos, a bus goes to Salema. If you land in Lisbon and have no car a train from the airport to tunes and from there to Lagos then goes back with the bus to Salema. The trip takes about 4 1/2 hours and enjoy the magnificent views. Schedules are not available "

Leisure

- Leisure activities less than 12 miles :
 Bathing, pedalo, snorkelling, scuba diving, water skiing, surfing, windsurfing, sailing, canoeing, golf, tennis, squash, pathway/ broadwalk, coastal/forest paths, hiking, rappel, rock climbing, parascending, paragliding, boat trips, horse tracking, fishing, fishing
- Attractions and relaxation :
 Restaurant, fitness center

Surroundings

- Locality :
 Sandy beach 990'
 Rocky beach 0.3mi.
 Sea inlet 0.3mi.
 18 hole golf course 1.85mi.
 Flying clubs
 Surfing spots 0.3mi.
 River 0.62mi.
- Amenities :
 Village center 990'
 Downtown 12.5mi.
 Bus stop / bus station 0.3mi.
 Bike/mountain bike hire 0.3mi.
 Local stores 0.3mi.
 Supermarket 990'
 Internet cafe 0.3mi.
 ATM 2.5mi.
 Drugstore 4.5mi.
 Hospital 9mi.



Guest facilities and furnishings



Exterior facilities at guests disposal



Interior layout

Interior

- **Receive up to :**
from 1 to 3 person(s) (3 adults)
- **Liveable floor area :**
650 Sq.ft.
- **Interior layout :**
1 bathroom, 1 toilets, american style kitchen, reception hall
- **Sleeps - bed(s) :**
1 full bed(s), 1 sleeper sofa(s) 2 pers, 1 sleeper sofa(s) 1 pers
- **Guest facilities :**
T.V., hi-fi system, cable/satelite, wifi, wardrobe, hair dryer, electric heating, Drapes, Double glazed, digipad entry system, digipad entry gates
- **Appliances :**
Crockery/flatware, kitchen utensils, cafetiere, electric coffee maker, electric kettle, toaster, juicer, gaz stove, electric hobs, micro-wave oven, extractor hood, refridgerator, iron, ironing board

Exterior

- **Ground surface :**
2.5 acres
- **Outside accommodation :**
Terrace 183 Sq.ft., sundeck 21.5 Sq.ft, pergola 75 Sq.ft.
- **Outside setting :**
Enclosed grounds 2.5 acres
- **Outside amenities :**
BBQ, yard table(s), 3 yard seat(s), 5 sun recliner(s)



hi-fi system

Services

- **washing :**
Sheets, Towels, Linen, Beach towels supplement (+\$4*), Comforter(s), Comforter (s), Pillows
- **Single family home :**
Cleaning on departure, Yard/swimming pool maintenance, Parking
- **Personnel :**
Laundry

For your guidance

- **For your guidance**
Kids welcome
Pets accepted under certain conditions (ask the owner)
Cell phone network coverage
Water : hot/cold
Electricity supply : mains



Interior layout

Photo album - 1



Exterior facilities at guests disposal



Guest facilities and furnishings



Interior layout



Interior layout



hi-fi system

Photo album - 2



south-westerly view



Luxury Studio Flat



Kitchen Area



bathroom



Luxury Studio Flat



Leisure facilities



view over the sea



terrace



nearby



sandy beach




Kitchen Area

Location



Location & Access

" Directions key info apartment: the journey from Faro to Salema is approximately one hour. From the Estrada EN 125, turn left to Salema on and go to the end of the road. There a narrow goes off left after the phone column impasse, the Rua dos Pescadores. Right comes after the number of 14 large White House, below this House located on the street is your parking lot of this just for you. "

 GPS coordinates in degrees, minutes, seconds: Latitude 37°4'1"N - Longitude 8°49'18"W ([Dwelling](#))

Address

→ Rua dos Pescadores
8650 Salema

• Airport Faro

→ Faro, Algarve, Portugal
→ Distance : 56mi.
→ Time : 1h

- Sagres : (10,5mi.)
- Lagos : (11,2mi.)

Contact

Spoken languages



Gîte - Self Catering
Algarve - Salema
"Studio Salema"

[Book now](#)

Availability calendar - from : september 2018

Sep	Sa	Su	M	Tu	W	Th	F	Sa	Su	M	Tu	W	Th	F	Sa	Su	M	Tu	W	Th	F	Sa	Su	M	Tu	W	Th	F	Sa	Su
2018	1	2	3	4	5	6	7	8	9	10	11	12	13	14	15	16	17	18	19	20	21	22	23	24	25	26	27	28	29	30

Oct	M	Tu	W	Th	F	Sa	Su	M	Tu	W	Th	F	Sa	Su	M	Tu	W	Th	F	Sa	Su	M	Tu	W	Th	F	Sa	Su	M	Tu	W
2018	1	2	3	4	5	6	7	8	9	10	11	12	13	14	15	16	17	18	19	20	21	22	23	24	25	26	27	28	29	30	31

Nov	Th	F	Sa	Su	M	Tu	W	Th	F	Sa	Su	M	Tu	W	Th	F	Sa	Su	M	Tu	W	Th	F	Sa	Su	M	Tu	W	Th	F
2018	1	2	3	4	5	6	7	8	9	10	11	12	13	14	15	16	17	18	19	20	21	22	23	24	25	26	27	28	29	30

Dec	Sa	Su	M	Tu	W	Th	F	Sa	Su	M	Tu	W	Th	F	Sa	Su	M	Tu	W	Th	F	Sa	Su	M	Tu	W	Th	F	Sa	Su	M
2018	1	2	3	4	5	6	7	8	9	10	11	12	13	14	15	16	17	18	19	20	21	22	23	24	25	26	27	28	29	30	31

Jan	Tu	W	Th	F	Sa	Su	M	Tu	W	Th	F	Sa	Su	M	Tu	W	Th	F	Sa	Su	M	Tu	W	Th	F	Sa	Su	M	Tu	W	Th
2019	1	2	3	4	5	6	7	8	9	10	11	12	13	14	15	16	17	18	19	20	21	22	23	24	25	26	27	28	29	30	31

Feb	F	Sa	Su	M	Tu	W	Th	F	Sa	Su	M	Tu	W	Th	F	Sa	Su	M	Tu	W	Th								
2019	1	2	3	4	5	6	7	8	9	10	11	12	13	14	15	16	17	18	19	20	21	22	23	24	25	26	27	28	

Mar	F	Sa	Su	M	Tu	W	Th	F	Sa	Su	M	Tu	W	Th	F	Sa	Su	M	Tu	W	Th	F	Sa	Su	M	Tu	W	Th	F	Sa	Su
2019	1	2	3	4	5	6	7	8	9	10	11	12	13	14	15	16	17	18	19	20	21	22	23	24	25	26	27	28	29	30	31

Apr	M	Tu	W	Th	F	Sa	Su	M	Tu	W	Th	F	Sa	Su	M	Tu	W	Th	F	Sa	Su	M	Tu	W	Th	F	Sa	Su	M	Tu	
2019	1	2	3	4	5	6	7	8	9	10	11	12	13	14	15	16	17	18	19	20	21	22	23	24	25	26	27	28	29	30	

May	W	Th	F	Sa	Su	M	Tu	W	Th	F	Sa	Su	M	Tu	W	Th	F	Sa	Su	M	Tu	W	Th	F	Sa	Su	M	Tu	W	Th	F
2019	1	2	3	4	5	6	7	8	9	10	11	12	13	14	15	16	17	18	19	20	21	22	23	24	25	26	27	28	29	30	31

June	Sa	Su	M	Tu	W	Th	F	Sa	Su	M	Tu	W	Th	F	Sa	Su	M	Tu	W	Th	F	Sa	Su								
2019	1	2	3	4	5	6	7	8	9	10	11	12	13	14	15	16	17	18	19	20	21	22	23	24	25	26	27	28	29	30	

Reserved
 Low season
 Mid season
 Promotional period



Gîte - Self Catering
Algarve - Portugal
"Studio Salema"

8

[Book now](#)

Availability calendar - from : june 2019

Jul	M	Tu	W	Th	F	Sa	Su	M	Tu	W	Th	F	Sa	Su	M	Tu	W	Th	F	Sa	Su	M	Tu	W							
2019	1	2	3	4	5	6	7	8	9	10	11	12	13	14	15	16	17	18	19	20	21	22	23	24	25	26	27	28	29	30	31

Aug	Th	F	Sa	Su	M	Tu	W	Th	F	Sa	Su	M	Tu	W	Th	F	Sa	Su	M	Tu	W	Th	F	Sa							
2019	1	2	3	4	5	6	7	8	9	10	11	12	13	14	15	16	17	18	19	20	21	22	23	24	25	26	27	28	29	30	31

Reserved
 Low season
 Mid season
 Promotional period

[Month : Next >>](#)

Rental rates - Gîte - Self Catering - Luxury Studio Flat - from 1 to 3 Person(s)

Rates	Night	Weekend	week	2 weeks	Month
■ Low season	\$99* > 7	-	-	-	-
■ Mid season	\$76* > 7	-	-	-	-
■ High season	\$123* > 7	-	-	-	-
■ Promotional period	\$58* > 7	-	-	-	-

> Minimum Night

[Book now](#)

Booking conditions

• Reservation

→ Payment made upon reservation : 30% of rental sum
→ Payment balance : on handing over the keys

• rentals

→ Service charges included

Accepted methods of payment

• Bank transfer (wire) • PayPal • Cash

[▶ Book now](#)

[▶ Contact the owner](#)

Contact directly the property owners

www.ihaholidayads.com
Advert No.
75312
>> Book now <<

Contact

Spoken languages



* Converted at the rate indicated : €100 = \$116.85 = £89

Advert No. 75312

www.ihaholidayads.com

