

Gîte - Self Catering São João de Tarouca "Casa da Portaria"

The House is the ideal place for your vacation, with family or with friends. It has 6 double rooms, swimming pool, barbecue, parking, a lounge with 100 m2 and 2000 m2 of land.



Gîte - Self Catering - Country House, detached, 2 floors, separate entrance, in(on) a(an) Property

Setting : country setting, peaceful

Capacity : from 10 to 14 person(s)

Bedroom(s) : 6

São João de Tarouca - Viseu District - Centro Region (Portugal)
Portugal

Advert No. 16367

www.iha.com



Gîte - Self Catering



Gîte - Self Catering - Country House, detached, 2 floors, separate entrance, in(on) a(an) Property

- **Ideal for family groups, large families**
- **View** : panoramic, mountain, swimming pool, farmland, river, monument
- **Setting** : country setting, peaceful
- **Exposure** : North-west

" The House has 6 double rooms, of which 3 are suites. We rent the whole house or just a part, contact us for prices and conditions. In addition to the 6 bedrooms, the house has a large hall with 100 m2, two full kitchens, 5 WC, parking, barbecue, swimming pool and 2000 m2 of land. Options. We can rent the house in its entirety, with capacity for 12 people, or just a part, having an independent kitchen area and the number of rooms you need. "

Assets

- **Swimming pool** :

Private swimming pool, rectangular (length 33', width 16'), steps in, step ladder, outside shower (open from 'april 01' till 'september 15')

- **Parking** :

Parking uncovered : 2 internal.

- **Advantages** :

Darts, 3 bike(s)

Surroundings & location



Countryside



Culture

" Located in the Douro region, famous for its wine and landscapes, is located in an historic village, with a magnificent Monastery, Church, bridges. The river Varosa passes by with waterfalls, windmills and places to swim. "

Leisure

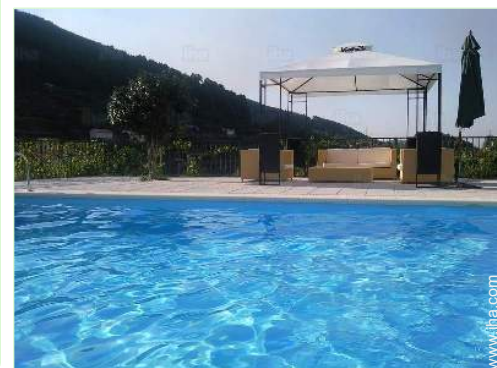
- **Leisure activities less than 12 miles** :

Banana boat, water skiing, jet ski, canoeing, canyoning, rafting, tennis, squash, riding school, rappel, hang-gliding, paragliding, boat trips, mini-golf, ATV/Quad Bike, RC modelling track, basketball, volleyball, paintball, hunting, fishing

Surroundings

- **Locality** :

Heated swimming pool 12.5mi.
Sea/ocean >31mi.
Sea inlet 15.5mi.
Public swimming pool 6mi.
Public tennis court 9mi.
9 hole golf course >31mi.
Waterfall 0.3mi.
River 660'
Stretch of water 15.5mi.
Mountain range 0.62mi.
Slipway 12.5mi.
Jetski slipway 12.5mi.





view from the garden/park

Interior

- **Receive up to :**

from 10 to 14 person(s) (12 adults, 2 kids)

- **Interior layout :**

6 bedroom(s), 5 bathroom, living room 270 Sq.ft., sitting room 970 Sq.ft., separate kitchen, dining area, cosy nook, games room, reception hall

- **Sleeps - bed(s) :**

4 full bed(s), 1 queen-size bed(s), 2 sleeper sofa(s) 1 pers

- **Guest facilities :**

Fireplace, T.V., digital home cinema, hi-fi system, vcr, DVD player, board games, book collection, movie collection, t.v points, phone, cable/satelite, wifi, wardrobe, central heating, Drapes, Blinds, Double glazed

- **Appliances :**

Crockery/flatware, kitchen utensils, cafetiere, electric espresso coffee maker, toaster, juicer, meat broiler, gaz stove, oven, mini-oven, micro-wave oven, extractor hood, refridgerator, deep freeze, dish washer, washing machine, vacuum cleaner, iron, ironing board

Exterior

- **Ground surface :**

0.5 acre

- **Outside accommodation :**

Terrace 750 Sq.ft., sundeck 1,940 Sq.ft., gazebo, traditional tent

- **Outside setting :**

Private courtyard 750 Sq.ft., enclosed grounds 0.5 acre, olive grove

- **Outside amenities :**

BBQ, yard table(s), 8 yard seat(s), arbour, parasol, 3 chaise(s) longue(s), 1 hammock (s), 1 rocking chair(s), outside shower facilities



kitchen

Services

- **washing :**

Sheets (1 X / per week), Towels (1 X / per week), Linen (1 X / per week), Comforter(s) (1 X / per week), Comforter(s) (1 X / per week), Pillows (1 X / per week)

- **Single family home :**

Cleaning (1 X / per week), Yard/swimming pool maintenance (1 X / per week)

- **Restauration :**

Breakfast supplement (+\$11*)

For your guidance

- **For your guidance**

Kids welcome

Water : hot/cold

Local voltage supply : 220-240V / 50Hz



master bedroom

Photo album - 1



view from the garden/park



master bedroom



kitchen

Photo album - 2



bedroom



bedroom



living room



bathroom



kitchen



bedroom



bedroom



sitting room

Photo album - 3



sitting room



reception hall



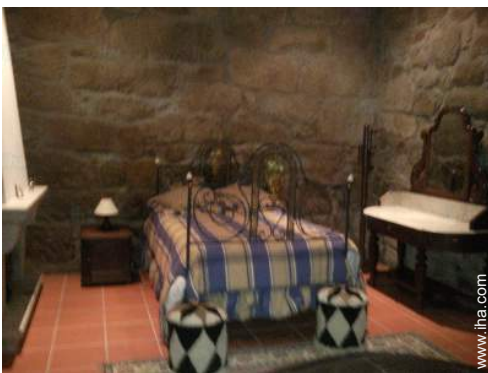
bathroom



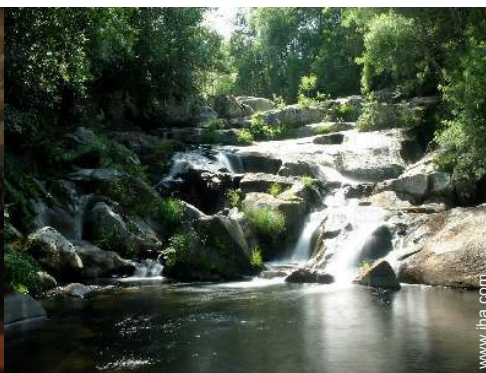
historical site



historical site



bedroom

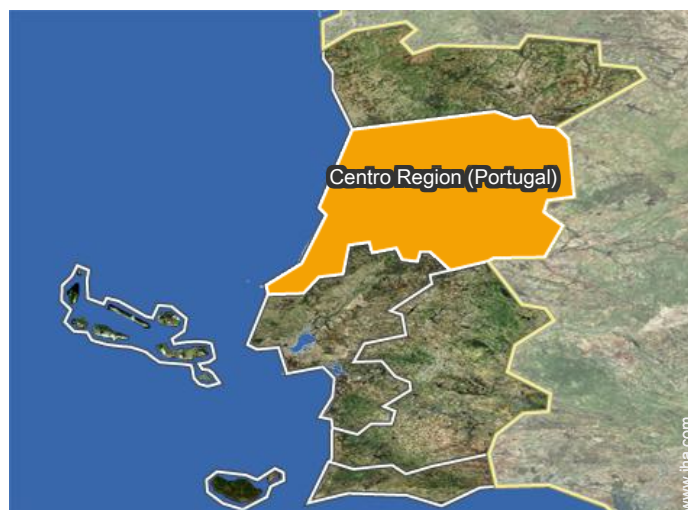
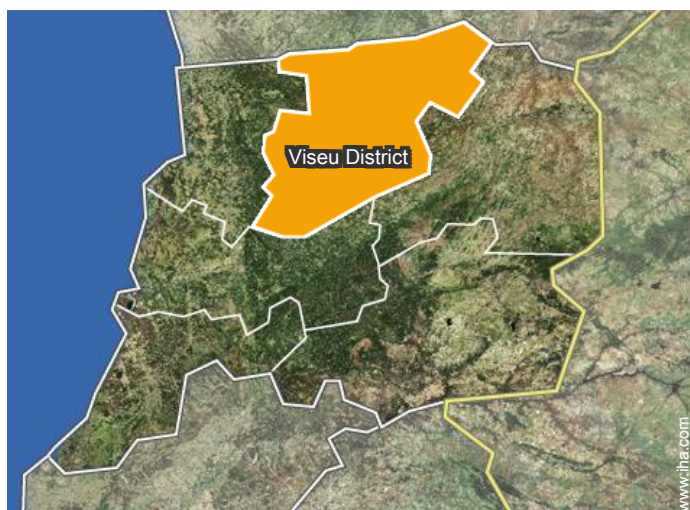


waterfall



private courtyard

Location



Location & Access

" In the Centre of São João de Tarouca, in front of the Church. "



GPS coordinates in degrees, minutes, seconds: Latitude 40°59'40"N - Longitude 7°44'54"W (Dwelling)

Address

→ Casa da Portaria
3610 082 São João de Tarouca

- Lamego : (9mi.)
- Peso da Régua : (14,5mi.)
- Vila Real : (28mi.)

Contact

Spoken languages



Gîte - Self Catering
Viseu District - Centro Region (Portugal)
"Casa da Portaria"

Availability calendar - from : september 2020

Sep	Tu	W	Th	F	Sa	Su	M	Tu	W	Th	F	Sa	Su	M	Tu	W	Th	F	Sa	Su	M	Tu	W	Th	F	Sa	Su	M	Tu	W				
2020	1	2	3	4	5	6	7	8	9	10	11	12	13	14	15	16	17	18	19	20	21	22	23	24	25	26	27	28	29	30				

Oct	Th	F	Sa	Su	M	Tu	W	Th	F	Sa	Su	M	Tu	W	Th	F	Sa	Su	M	Tu	W	Th	F	Sa	Su	M	Tu	W	Th	F	Sa		
2020	1	2	3	4	5	6	7	8	9	10	11	12	13	14	15	16	17	18	19	20	21	22	23	24	25	26	27	28	29	30	31		
	-	-	-	-	-	-	-	-	-	-	-	-	-	-	-	-	-	-	-	-	-	-	-	-	-	-	-	-	-	-	-	-	

Nov	Su	M	Tu	W	Th	F	Sa	Su	M	Tu	W	Th	F	Sa	Su	M	Tu	W	Th	F	Sa	Su	M	Tu	W	Th	F	Sa	Su	M		
2020	1	2	3	4	5	6	7	8	9	10	11	12	13	14	15	16	17	18	19	20	21	22	23	24	25	26	27	28	29	30		
	-	-	-	-	-	-	-	-	-	-	-	-	-	-	-	-	-	-	-	-	-	-	-	-	-	-	-	-	-	-	-	-

Dec	Tu	W	Th	F	Sa	Su	M	Tu	W	Th	F	Sa	Su	M	Tu	W	Th	F	Sa	Su	M	Tu	W	Th	F	Sa	Su	M	Tu	W	Th		
2020	1	2	3	4	5	6	7	8	9	10	11	12	13	14	15	16	17	18	19	20	21	22	23	24	25	26	27	28	29	30	31		
	-	-	-	-	-	-	-	-	-	-	-	-	-	-	-	-	-	-	-	-	-	-	-	-	-	-	-	-	-	-	-	-	

Jan	F	Sa	Su	M	Tu	W	Th	F	Sa	Su	M	Tu	W	Th	F	Sa	Su	M	Tu	W	Th	F	Sa	Su	M	Tu	W	Th	F	Sa	Su		
2021	1	2	3	4	5	6	7	8	9	10	11	12	13	14	15	16	17	18	19	20	21	22	23	24	25	26	27	28	29	30	31		
	-	-	-	-	-	-	-	-	-	-	-	-	-	-	-	-	-	-	-	-	-	-	-	-	-	-	-	-	-	-	-	-	

Feb	M	Tu	W	Th	F	Sa	Su	M	Tu	W	Th	F	Sa	Su	M	Tu	W	Th	F	Sa	Su	M	Tu	W	Th	F	Sa	Su			
2021	1	2	3	4	5	6	7	8	9	10	11	12	13	14	15	16	17	18	19	20	21	22	23	24	25	26	27	28			
	-	-	-	-	-	-	-	-	-	-	-	-	-	-	-	-	-	-	-	-	-	-	-	-	-	-	-	-	-	-	-

Mar	M	Tu	W	Th	F	Sa	Su	M	Tu	W	Th	F	Sa	Su	M	Tu	W	Th	F	Sa	Su	M	Tu	W	Th	F	Sa	Su	M	Tu	W		
2021	1	2	3	4	5	6	7	8	9	10	11	12	13	14	15	16	17	18	19	20	21	22	23	24	25	26	27	28	29	30	31		
	-	-	-	-	-	-	-	-	-	-	-	-	-	-	-	-	-	-	-	-	-	-	-	-	-	-	-	-	-	-	-	-	

Apr	Th	F	Sa	Su	M	Tu	W	Th	F	Sa	Su	M	Tu	W	Th	F	Sa	Su	M	Tu	W	Th	F	Sa	Su	M	Tu	W	Th	F		
2021	1	2	3	4	5	6	7	8	9	10	11	12	13	14	15	16	17	18	19	20	21	22	23	24	25	26	27	28	29	30		
	-	-	-	-	-	-	-	-	-	-	-	-	-	-	-	-	-	-	-	-	-	-	-	-	-	-	-	-	-	-	-	-

May	Sa	Su	M	Tu	W	Th	F	Sa	Su	M	Tu	W	Th	F	Sa	Su	M	Tu	W	Th	F	Sa	Su	M	Tu	W	Th	F	Sa	Su	M		
2021	1	2	3	4	5	6	7	8	9	10	11	12	13	14	15	16	17	18	19	20	21	22	23	24	25	26	27	28	29	30	31		
	-	-	-	-	-	-	-	-	-	-	-	-	-	-	-	-	-	-	-	-	-	-	-	-	-	-	-	-	-	-	-	-	

June	Tu	W	Th	F	Sa	Su	M	Tu	W	Th	F	Sa	Su	M	Tu	W	Th	F	Sa	Su	M	Tu	W	Th	F	Sa	Su	M	Tu	W		
2021	1	2	3	4	5	6	7	8	9	10	11	12	13	14	15	16	17	18	19	20	21	22	23	24	25	26	27	28	29	30		
	-	-	-	-	-	-	-	-	-	-	-	-	-	-	-	-	-	-	-	-	-	-	-	-	-	-	-	-	-	-	-	-

Gîte - Self Catering
São João de Tarouca - Portugal
"Casa da Portaria"

9

[Book now](#)





Availability calendar - from : june 2021

Jul	Th	F	Sa	Su	M	Tu	W	Th	F	Sa	Su	M	Tu	W	Th	F	Sa	Su	M	Tu	W	Th	F	Sa	Su	M	Tu	W	Th	F	Sa
2021	1	2	3	4	5	6	7	8	9	10	11	12	13	14	15	16	17	18	19	20	21	22	23	24	25	26	27	28	29	30	31

Aug	Su	M	Tu	W	Th	F	Sa	Su	M	Tu	W	Th	F	Sa	Su	M	Tu	W	Th	F	Sa	Su	M	Tu							
2021	1	2	3	4	5	6	7	8	9	10	11	12	13	14	15	16	17	18	19	20	21	22	23	24	25	26	27	28	29	30	31

[Month : Next >>](#)

Rental rates - Gîte - Self Catering - Country House - from 10 to 14 Person(s)

Rates	Night	Weekend	week	2 weeks	Month
 Low season	\$220* ↓ > 2	\$550*	\$990*	-	-
 Mid season	-	-	\$1320* (Saturday)	-	-
 High season	-	-	\$2640* (Saturday)	-	-
 Festive specials	-	-	\$3190* (Saturday) > 7	-	-

↓ Reducing rates (Check-in day) > Minimum Night

[Book now](#)

Booking conditions

• Reservation

→ Payment made upon reservation :
25% of rental sum
→ Payment balance :
on handing over the keys

Accepted methods of payment

• Bank transfer (wire) • PayPal • Cash

[▶ Book now](#)

[▶ Contact the owner](#)

Contact directly the property owners

www.iha.com
Advert No.
16367
[>> Book now <<](#)

Contact

Spoken languages



* Converted at the rate indicated : €100 = \$110 = £91

Advert No. 16367

www.iha.com



[>> VACATION HOMES](#)

DIRECT BY OWNERS