

Gîte - Self Catering Plaine d'Alsace "Gîte Sainte Anne"

Calm and rest in the heart of the medieval city of Turckheim. Comfortable Cottage.



Gîte - Self Catering - Typical House, detached, 2 floors, shared entrance, in (on) a(an) Wine estate

Setting : historical, medieval

Capacity : from 2 to 4 person(s)

Bedroom(s) : 2

Room(s) : 3



Clé vacances (3 keys)
Meublés de Tourisme (3 stars)



Theme breaks
Wine tasting
Cheeses

Turckheim - Upper Rhine (68) - Alsace

France

Reservation : +33 (0) 3 89 27 58 20 (France)

Advert No. 45622

www.ihacom



Gîte - Self Catering



Gîte - Self Catering - Typical House, detached, 2 floors, shared entrance, in(on) a(an) Wine estate

- **Ideal for family groups, couples with baby**
- **View :** mountain, country side, Vineyards, forest, village, monument
- **Setting :** historical, medieval
- **Exposure :** South-west

" The cottage in Turckheim welcomes you and offers you to discover all the treasures of a city of history and heritage, which has kept its medieval character. Three fortified doors and substantial remains of the wall are to be discovered by the trail 'The roofs of Turckheim' Mecca of winegrowing in Alsace, Turckheim is ideally located on the Route des Vins d'Alsace. Tariff suitable for 2 people (excluding school holidays). Colmar: 7 Kms. Strasbourg: 70 Kms. Mulhouse: 40 Kms. River: 0.5 km. shops: 0.3 km. June 2012! We just get the Label ' vineyards & discoveries. Alone, in family, among friends, discover or rediscover the land and wines at the Colmar country in any season. Ideally located on the route of Central Alsace wines, our house in Turckheim will allow you to discover Alsace in all its splendor. "

Assets

- **Advantages :**
Ski locker
- **baby equipment :**
High chair, comfort station, infant tub, baby potty, stroller

Surroundings & location



" In the heart of Alsace, you will have the opportunity to discover the typical Alsatian villages. Riquewihr, Ribeauvillé, Eguisheim mainly, Colmar, Strasbourg and Mulhouse none the less. For the discovery of the vineyard ask Christine and Clement to visit their winery. They will be happy to let you taste an Alsace white wine to finish the visit. Hiking in the Munster Valley you will be advised by Christine, a natural of this valley. Take also the chance to ask for typical farms in this Valley where to enjoy a good meal. "

Leisure

- **Leisure activities less than 12 miles :**
Alpine skiing, cross-country skiing, snowboarding, luge (run), ice-skating, skidoo, bathing, golf, tennis, riding school, pathway/broadwalk, hiking, rappel, mountain bike (path), parachuting, horse trekking, mini-golf, rollerblade/rollerskate (circuit), ten-pin bowling, paintball, acrobatics, fishing, pétanque field
- **Supervised :**
Ski school, riding school
- **Attractions and relaxation :**
Bar/pub, discotheque, restaurant, movie theater, park and garden, leisure park, nature reserve, exhibition center, art gallery, historical site, museum, theater, festivals, antiques & bric-a-brac, local craftstore, cellar and wine tasting, casino, sauna, steam baths

Surroundings

- **Locality :**
Ski slopes 12.5mi.
Ski lifts 12.5mi.
Ice skating rink 3mi.
Heated swimming pool 4.5mi.
Public swimming pool 4.5mi.
Public tennis court 3mi.
9 hole golf course 4.5mi.
River <165'
Lake 12.5mi.
Forest 0.3mi.
Mountain range 9mi.
Marina 4.5mi.
- **Amenities :**
Village center 990'
Bus stop / bus station <165'
Bike/mountain bike hire 1.25mi.
Car rental 3mi.
Breadstore <165'
Local stores 660'
Supermarket 3mi.
High class retailers 6mi.
Hairdressing salon 660'
Mail office 0.5mi.
Bank 660'
ATM 660'

Drugstore 0.3mi.
Doctor 0.3mi.
Hospital 3mi.



infants bedroom



the apartment



dining area



façade

Interior

- **Receive up to :**
from 2 to 4 person(s) (2 adults, 2 kids)
- **Liveable floor area :**
860 Sq.ft.
- **Interior layout :**
3 Room(s), 2 bedroom(s), 1 bathroom, 1 shower room, 1 toilets, living room 323 Sq.ft., large american style kitchen, dining area, cosy nook, tv den, laundry room
- **Sleeps - bed(s) :**
1 full bed(s), 2 twin bed(s)
- **Guest facilities :**
Fireplace, T.V., board games, t.v points, cable/satellite, internet access, high speed internet access, wifi, wardrobe, cupboard, Hanging wardrobe, heated towel rail, electric heating, wood-burning stove, Drapes, Blinds, Double glazed, entry phone system
- **Appliances :**
Crockery/flatware, kitchen utensils, cafetiere, electric coffee maker, electric kettle, toaster, electric stove, electric hobs, oven, micro-wave oven, extractor hood, refridgerator, deep freeze, dish washer, washing machine, vacuum cleaner, iron, ironing board

Services

- **washing :**
Sheets (1 X / per week), Towels supplement (1 X / per week +\$6*), Comforter(s), Comforter(s), Pillows
- **Single family home :**
Cleaning on departure supplement (+\$39*)

For your guidance

- **For your guidance**
Kids welcome
Pets accepted under certain conditions (ask the owner)
Present on site : pets
Non smoking rental, cell phone network coverage
Water : hot/cold
Local voltage supply : 110-120V / 60Hz

Photo album - 1



the apartment



infants bedroom



dining area



façade



large bedroom

Photo album - 2



View



General



kitchen



master bedroom



bathroom



toilets



master bedroom



view from the apartment



view from the kitchen

Theme breaks

Wine tasting

Cheeses

Route map



Location & Access

" Village in Central Alsace. You access Turckheim by car or by train.
Easy transport by bus from Colmar train station. "



GPS coordinates in degrees, minutes, seconds: Latitude 48° 5'11"N - Longitude 7°16'20"E ([Dwelling](#))

Address

→ 94, Grand Rue
68230 Turckheim

• Airport Basel/Mulhouse/Freiburg

→ Mulhouse, Upper Rhine, Alsace, France
→ Distance : 40mi.
→ Time : 50'

• Freeway (exit) A35

→ Colmar, Upper Rhine, Alsace, France
→ Distance : 6mi.
→ Time : 20'

• Railroad station Colmar

→ Colmar, Upper Rhine, Alsace, France
→ Distance : 4.5mi.
→ Time : 15'

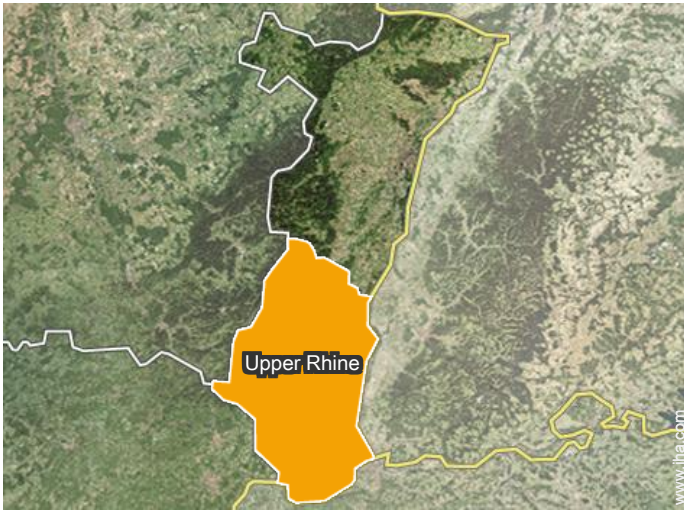
- Colmar : (4.5mi.)
- Strasbourg : (43,5mi.)
- Freiburg im Breisgau : (34mi.)

Contact

Spoken
languages



Location



Gîte - Self Catering Upper Rhine - Alsace "Gîte Sainte Anne"

[Book now](#)

Availability calendar - from : april 2020

Apr	W	Th	F	Sa	Su	M	Tu	W	Th	F	Sa	Su	M	Tu	W	Th	F	Sa	Su	M	Tu	W	Th	F	Sa	Su	M	Tu	W	Th
2020	1	2	3	4	5	6	7	8	9	10	11	12	13	14	15	16	17	18	19	20	21	22	23	24	25	26	27	28	29	30

May	F	Sa	Su	M	Tu	W	Th	F	Sa	Su	M	Tu	W	Th	F	Sa	Su	M	Tu	W	Th	F	Sa	Su	M	Tu	W	Th	F	Sa	Su
2020	1	2	3	4	5	6	7	8	9	10	11	12	13	14	15	16	17	18	19	20	21	22	23	24	25	26	27	28	29	30	31
	-	-	-	-	-	-	-	-	-	-	-	-	-	-	-	-	-	-	-	-	-	-	-	-	-	-	-	-	-	-	-

June	M	Tu	W	Th	F	Sa	Su	M	Tu	W	Th	F	Sa	Su	M	Tu	W	Th	F	Sa	Su	M	Tu	W	Th	F	Sa	Su	M	Tu
2020	1	2	3	4	5	6	7	8	9	10	11	12	13	14	15	16	17	18	19	20	21	22	23	24	25	26	27	28	29	30
	-	-	-	-	-	-	-	-	-	-	-	-	-	-	-	-	-	-	-	-	-	-	-	-	-	-	-	-	-	-

Jul	W	Th	F	Sa	Su	M	Tu	W	Th	F	Sa	Su	M	Tu	W	Th	F	Sa	Su	M	Tu	W	Th	F	Sa	Su	M	Tu	W	Th	F
2020	1	2	3	4	5	6	7	8	9	10	11	12	13	14	15	16	17	18	19	20	21	22	23	24	25	26	27	28	29	30	31
	-	-	-	-	-	-	-	-	-	-	-	-	-	-	-	-	-	-	-	-	-	-	-	-	-	-	-	-	-	-	-

Aug	Sa	Su	M	Tu	W	Th	F	Sa	Su	M	Tu	W	Th	F	Sa	Su	M	Tu	W	Th	F	Sa	Su	M	Tu	W	Th	F	Sa	Su	M
2020	1	2	3	4	5	6	7	8	9	10	11	12	13	14	15	16	17	18	19	20	21	22	23	24	25	26	27	28	29	30	31
	-	-	-	-	-	-	-	-	-	-	-	-	-	-	-	-	-	-	-	-	-	-	-	-	-	-	-	-	-	-	-

Sep	Tu	W	Th	F	Sa	Su	M	Tu	W	Th	F	Sa	Su	M	Tu	W	Th	F	Sa	Su	M	Tu	W	Th	F	Sa	Su	M	Tu	W
2020	1	2	3	4	5	6	7	8	9	10	11	12	13	14	15	16	17	18	19	20	21	22	23	24	25	26	27	28	29	30
	-	-	-	-	-	-	-	-	-	-	-	-	-	-	-	-	-	-	-	-	-	-	-	-	-	-	-	-	-	-

Oct	Th	F	Sa	Su	M	Tu	W	Th	F	Sa	Su	M	Tu	W	Th	F	Sa	Su	M	Tu	W	Th	F	Sa	Su	M	Tu	W	Th	F	Sa
2020	1	2	3	4	5	6	7	8	9	10	11	12	13	14	15	16	17	18	19	20	21	22	23	24	25	26	27	28	29	30	31
	-	-	-	-	-	-	-	-	-	-	-	-	-	-	-	-	-	-	-	-	-	-	-	-	-	-	-	-	-	-	-

Nov	Su	M	Tu	W	Th	F	Sa	Su	M	Tu	W	Th	F	Sa	Su	M	Tu	W	Th	F	Sa	Su	M	Tu	W	Th	F	Sa	Su	M
2020	1	2	3	4	5	6	7	8	9	10	11	12	13	14	15	16	17	18	19	20	21	22	23	24	25	26	27	28	29	30
	-	-	-	-	-	-	-	-	-	-	-	-	-	-	-	-	-	-	-	-	-	-	-	-	-	-	-	-	-	-

Dec	Tu	W	Th	F	Sa	Su	M	Tu	W	Th	F	Sa	Su	M	Tu	W	Th	F	Sa	Su	M	Tu	W	Th	F	Sa	Su	M	Tu	W	Th
2020	1	2	3	4	5	6	7	8	9	10	11	12	13	14	15	16	17	18	19	20	21	22	23	24	25	26	27	28	29	30	31
	-	-	-	-	-	-	-	-	-	-	-	-	-	-	-	-	-	-	-	-	-	-	-	-	-	-	-	-	-	-	-

Jan	F	Sa	Su	M	Tu	W	Th	F	Sa	Su	M	Tu	W	Th	F	Sa	Su	M	Tu	W	Th	F	Sa	Su	M	Tu	W	Th	F	Sa	Su
2021	1	2	3	4	5	6	7	8	9	10	11	12	13	14	15	16	17	18	19	20	21	22	23	24	25	26	27	28	29	30	31
	-	-	-	-	-	-	-	-	-	-	-	-	-	-	-	-	-	-	-	-	-	-	-	-	-	-	-	-	-	-	-

Mid season High season



Availability calendar - from : january 2021

Feb	M	Tu	W	Th	F	Sa	Su	M	Tu	W	Th	F	Sa	Su	M	Tu	W	Th	F	Sa	Su	M	Tu	W	Th	F	Sa	Su
2021	1	2	3	4	5	6	7	8	9	10	11	12	13	14	15	16	17	18	19	20	21	22	23	24	25	26	27	28
-	-	-	-	-	-	-	-	-	-	-	-	-	-	-	-	-	-	-	-	-	-	-	-	-	-	-	-	-

Mar	M	Tu	W	Th	F	Sa	Su	M	Tu	W	Th	F	Sa	Su	M	Tu	W	Th	F	Sa	Su	M	Tu	W	Th	F	Sa	Su	M	Tu	W
2021	1	2	3	4	5	6	7	8	9	10	11	12	13	14	15	16	17	18	19	20	21	22	23	24	25	26	27	28	29	30	31
-	-	-	-	-	-	-	-	-	-	-	-	-	-	-	-	-	-	-	-	-	-	-	-	-	-	-	-	-	-	-	-



Mid season



High season

[Month : Next >>](#)

Rental rates - Gîte - Self Catering - Typical House - from 2 to 4 Person(s)

Rates	Night	Weekend	week	2 weeks	Month
Mid season	-	-	\$550* (Saturday)	-	-
High season	-	\$264* (Friday)	\$572* (Saturday)	-	-

(Check-in day)

[Book now](#)

Booking conditions

• Reservation

- Payment made upon reservation : 25% of rental sum
- Payment balance : on handing over the keys
- Deposit required : \$220*

• rentals

- Service charges included
- Day tax included
- Cleaning charge levy on departure : \$44*
- Anticipated supplement for :
 - animals
 - supplementary bed(s)

Accepted methods of payment

- Bank transfer (wire)
- Check
- Draft
- Cash

[▶ Book now](#)

[▶ Contact the owner](#)

Contact directly the property owners

www.iha.com
Advert No.
45622
[>> Book now <<](#)

Contact

Spoken languages



* Converted at the rate indicated : €100 = \$110 = £91

Advert No. 45622

www.iha.com

