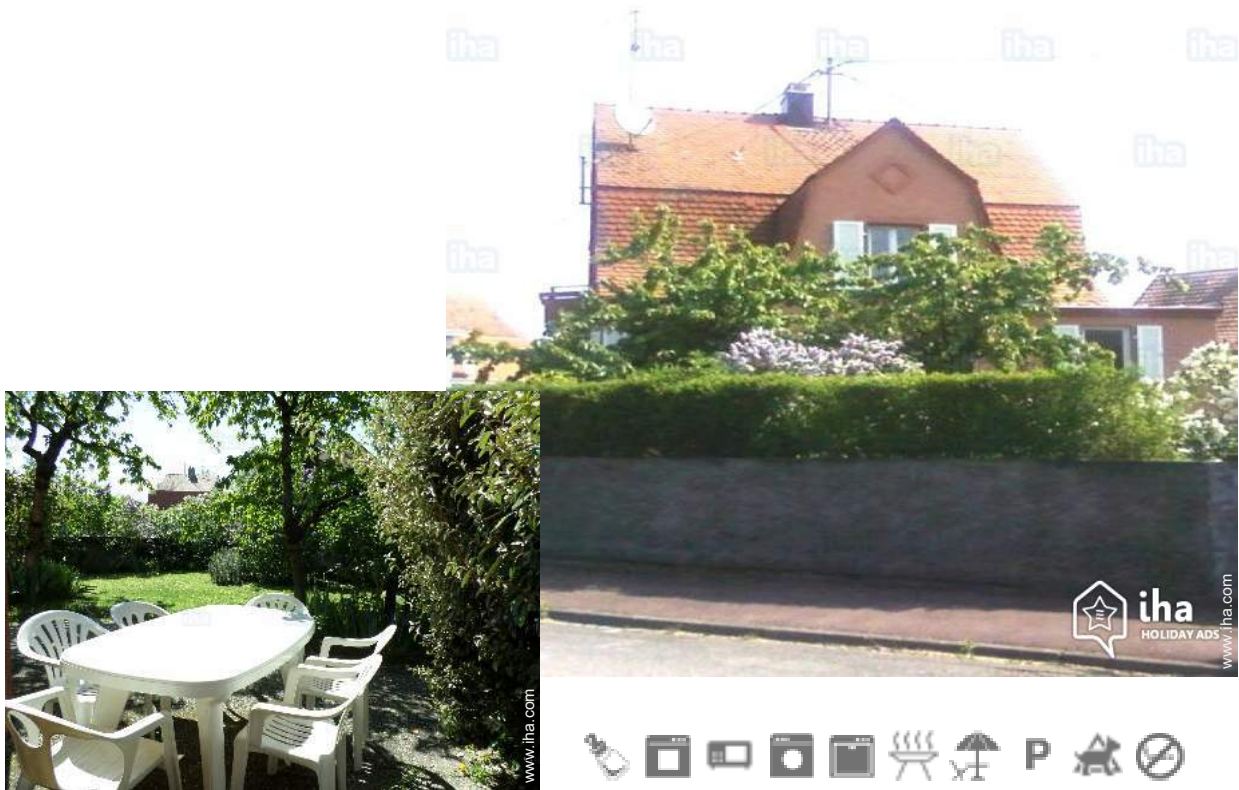


# Gîte - Self Catering Florival "Gites Klink"

House with garden 50 m of a pizzeria, forest trails, of the bicycle. 15 minutes from the Museum, Park Petit Prince, Colmar, Mulhouse, vineyard, the natural park of the balloon of Vosges and Germany.



Gîte - Self Catering - Traditional accommodation, attached home, 1 floor, separate entrance

Setting : pleasant, bucolic

Capacity : from 2 to 7 person(s)

Bedroom(s) : 2

Room(s) : 3



Meublés de Tourisme (2 stars)

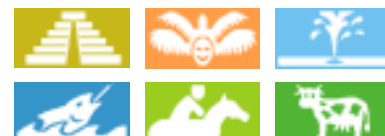
Ungersheim - Upper Rhine (68) - Alsace

France

Reservation : +33 (0) 6 17 11 15 17 (France)

Advert No. 51255

www.ih.com



>> VACATION HOMES

DIRECT BY OWNERS

## Gîte - Self Catering



Gîte - Self Catering - Traditional accommodation, attached home, 1 floor, separate entrance

- Ideal for all age groups, large families
- View : unobscured, garden/park
- Setting : pleasant, bucolic
- Exposure : South

" The House has a kitchen with edible table 4/8 people. 2 rooms that allow 5 single beds, a bathroom with open shower and washbasin 2 basins. The walled garden and terrace are safe from prying eyes. "

## Assets

- Parking :  
Parking uncovered : 2 internal, 1 reserved stall.
- baby equipment :  
High chair



garden/park view

## Surroundings & location



" The Regency Museum, Park Eiblen, the Eco-Museum and the Park of the little Prince with more than 30 attractions are just 5 minutes from the lodge. In a ray of 30km you can find: West, the vineyard and the road crests with the historical site of Vieil-Armand and many farms hostels, the natural park of the ball of the Vosges for various hikes or ski resorts. To the East, route du Rhin, Neuf-Brisach heritage of UNESCO, and on the other registrant side of the Rhine the Germany. South, Mulhouse known for its Museum of the Automobile and the Cité du train, you also have the small Camargue one reserve classified with a fabulous ecosystem, a multitude of animals and a wintering of birds, which can traverse by boat, on foot or by bike. Side North, Eguisheim one village preferred by the French, several picturesque villages such as Türkheim or Kaisersberg and Colmar globally renowned for its little Venice, its architecture and its museums. While mont Saint-Odile, the monkey mountain, Haut-Koenigsbourg and the great Europapark amusement park located 50 km from the cottage. "

## Leisure

- Leisure activities less than 12 miles :  
Ski-trekking, ice-skating, bathing, windsurfing, sailing, canoeing, canyoning, golf, tennis, riding school, pony club, pathway/ broadwalk, coastal/forest paths, hiking, mountain bike (path), kite flying, paragliding, flying (club), horse-drawn carriage, horse trekking, donkey rides, mini-golf, skate board (ramps), ATV/Quad Bike, go-karting, race track, ten-pin bowling, fishing, fishing, pétanque field
- Supervised :  
Riding school

## Surroundings

- Locality :  
Ski slopes 18.5mi.  
Ice skating rink 12.5mi.  
Heated swimming pool 660'  
Sandy beach 12.5mi.  
Public swimming pool 660'  
Public tennis court 660'  
9 hole golf course 6mi.  
18 hole golf course 9mi.  
Surfing spots 9mi.  
Watersports centre 9mi.  
River 0.5mi.  
Stretch of water 0.93mi.  
Lake 3mi.

Forest 165'  
Mountain range 12.5mi.



yard



view from the house



separate kitchen

### Interior

- **Receive up to :**  
from 2 to 7 person(s) (6 adults, 1 kids)
- **Liveable floor area :**  
860 Sq.ft.
- **Interior layout :**  
3 Room(s), 2 bedroom(s), 1 shower room, 2 toilets, sitting room 150 Sq.ft., separate kitchen
- **Sleeps - bed(s) :**  
1 full bed(s), 1 sleeper sofa(s) 2 pers, 4 twin bed(s), 2 bunk beds, 2 two twin beds, 1 possible extra bed(s)
- **Guest facilities :**  
T.V., t.v points, wardrobe, cupboard, Hanging wardrobe, hair dryer, mobile cool air fan, central heating, Double glazed
- **Appliances :**  
Crockery/flatware, kitchen utensils, cafetiere, electric coffee maker, electric kettle, toaster, electric raclette set, fondue set, gaz stove, electric hobs, mini-oven, micro-wave oven, extractor hood, refridgerator, deep freeze, dish washer, washing machine, vacuum cleaner, iron

### Exterior

- **Ground surface :**  
3,300 Sq.ft.
- **Outside accommodation :**  
Terrace 43 Sq.ft.
- **Outside setting :**  
Private courtyard, enclosed grounds, yard 3,300 Sq.ft.
- **Outside amenities :**  
Summer living area, BBQ, yard table(s), 8 yard seat(s), yard seated area



two twin beds

### Services

- **washing :**  
Sheets (1 X / per week), Comforter(s), Pillows
- **Single family home :**  
Cleaning on departure supplement (+\$49\*), Parking

### For your guidance

- **For your guidance**  
Kids welcome  
Pets accepted under certain conditions (ask the owner)  
Non smoking rental, cell phone network coverage, personal transport advisable  
Water : hot/cold  
Local voltage supply : 110-120V / 60Hz



bedroom

Photo album - 1



garden/park view



view from the house



yard



separate kitchen



bedroom

Photo album - 2



two twin beds



Interior layout



shower room



Guest facilities



Surroundings



mountain bike (path)



horse trekking



Attractions and relaxation



museum

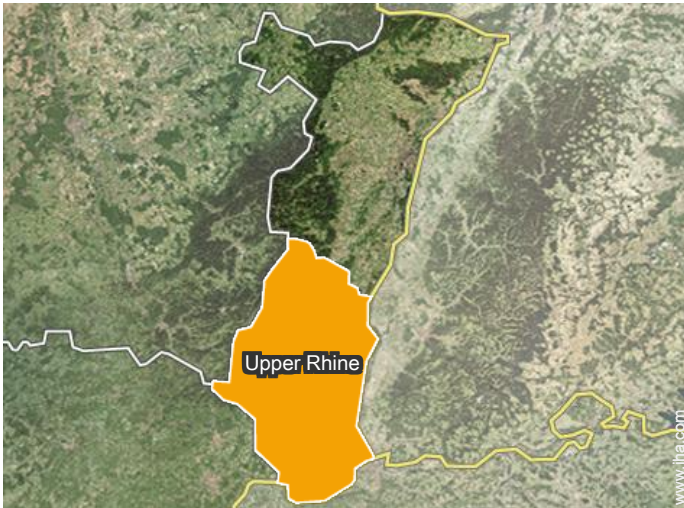


park and garden



river

## Location



## Location & Access

" 15 km A36 exit Burnhaupt, 4km A6 exit Ecomuseum/Park little Prince, 3km exit Bollwiller or Raedersheim RN83. "



GPS coordinates in degrees, minutes, seconds: Latitude 47°52'27"N - Longitude 7°19'29"E (Dwelling)

### Address

→ 34 Rue première armée française  
68190 Ungersheim

• Basel : (28mi.)

### • Freeway (exit) A35

→ Ensisheim, Upper Rhine, Alsace, France  
→ Distance : 3mi.  
→ Time : 5'

### • Airport Basel/Mulhouse/Freiburg

→ Mulhouse, Upper Rhine, Alsace, France  
→ Distance : 25mi.  
→ Time : 40'

• Ensisheim : (3mi.)

• Colmar : (18.5mi.)

## Contact

Spoken languages



Gîte - Self Catering  
 Alsace - France  
 "Gites Klink"

[Book now](#)

Availability calendar - from : april 2018

Apr	Su	M	Tu	W	Th	F	Sa	Su	M	Tu	W	Th	F	Sa	Su	M	Tu	W	Th	F	Sa	Su	M							
2018	1	2	3	4	5	6	7	8	9	10	11	12	13	14	15	16	17	18	19	20	21	22	23	24	25	26	27	28	29	30

May	Tu	W	Th	F	Sa	Su	M	Tu	W	Th	F	Sa	Su	M	Tu	W	Th	F	Sa	Su	M	Tu	W	Th							
2018	1	2	3	4	5	6	7	8	9	10	11	12	13	14	15	16	17	18	19	20	21	22	23	24	25	26	27	28	29	30	31
	-	-	-	-	-	-	-	-	-	-	-	-	-	-	-	-	-	-	-	-	-	-	-	-	-	-	-	-	-	-	

June	F	Sa	Su	M	Tu	W	Th	F	Sa	Su	M	Tu	W	Th	F	Sa	Su	M	Tu	W	Th	F	Sa							
2018	1	2	3	4	5	6	7	8	9	10	11	12	13	14	15	16	17	18	19	20	21	22	23	24	25	26	27	28	29	30
	-	-	-	-	-	-	-	-	-	-	-	-	-	-	-	-	-	-	-	-	-	-	-	-	-	-	-	-	-	-

Jul	Su	M	Tu	W	Th	F	Sa	Su	M	Tu	W	Th	F	Sa	Su	M	Tu	W	Th	F	Sa	Su	M	Tu							
2018	1	2	3	4	5	6	7	8	9	10	11	12	13	14	15	16	17	18	19	20	21	22	23	24	25	26	27	28	29	30	31
	-	-	-	-	-	-	-	-	-	-	-	-	-	-	-	-	-	-	-	-	-	-	-	-	-	-	-	-	-	-	

Aug	W	Th	F	Sa	Su	M	Tu	W	Th	F	Sa	Su	M	Tu	W	Th	F	Sa	Su	M	Tu	W	Th	F							
2018	1	2	3	4	5	6	7	8	9	10	11	12	13	14	15	16	17	18	19	20	21	22	23	24	25	26	27	28	29	30	31
	-	-	-	-	-	-	-	-	-	-	-	-	-	-	-	-	-	-	-	-	-	-	-	-	-	-	-	-	-	-	

Sep	Sa	Su	M	Tu	W	Th	F	Sa	Su	M	Tu	W	Th	F	Sa	Su	M	Tu	W	Th	F	Sa	Su							
2018	1	2	3	4	5	6	7	8	9	10	11	12	13	14	15	16	17	18	19	20	21	22	23	24	25	26	27	28	29	30
	-	-	-	-	-	-	-	-	-	-	-	-	-	-	-	-	-	-	-	-	-	-	-	-	-	-	-	-	-	-

Oct	M	Tu	W	Th	F	Sa	Su	M	Tu	W	Th	F	Sa	Su	M	Tu	W	Th	F	Sa	Su	M	Tu	W							
2018	1	2	3	4	5	6	7	8	9	10	11	12	13	14	15	16	17	18	19	20	21	22	23	24	25	26	27	28	29	30	31
	-	-	-	-	-	-	-	-	-	-	-	-	-	-	-	-	-	-	-	-	-	-	-	-	-	-	-	-	-	-	

Nov	Th	F	Sa	Su	M	Tu	W	Th	F	Sa	Su	M	Tu	W	Th	F	Sa	Su	M	Tu	W	Th	F							
2018	1	2	3	4	5	6	7	8	9	10	11	12	13	14	15	16	17	18	19	20	21	22	23	24	25	26	27	28	29	30
	-	-	-	-	-	-	-	-	-	-	-	-	-	-	-	-	-	-	-	-	-	-	-	-	-	-	-	-	-	-

Dec	Sa	Su	M	Tu	W	Th	F	Sa	Su	M	Tu	W	Th	F	Sa	Su	M	Tu	W	Th	F	Sa	Su	M							
2018	1	2	3	4	5	6	7	8	9	10	11	12	13	14	15	16	17	18	19	20	21	22	23	24	25	26	27	28	29	30	31
	-	-	-	-	-	-	-	-	-	-	-	-	-	-	-	-	-	-	-	-	-	-	-	-	-	-	-	-	-	-	

Jan	Tu	W	Th	F	Sa	Su	M	Tu	W	Th	F	Sa	Su	M	Tu	W	Th	F	Sa	Su	M	Tu	W	Th							
2019	1	2	3	4	5	6	7	8	9	10	11	12	13	14	15	16	17	18	19	20	21	22	23	24	25	26	27	28	29	30	31
	-	-	-	-	-	-	-	-	-	-	-	-	-	-	-	-	-	-	-	-	-	-	-	-	-	-	-	-	-	-	

 Reserved



Availability calendar - from : january 2019




Feb	F	Sa	Su	M	Tu	W	Th	F	Sa	Su	M	Tu	W	Th	F	Sa	Su	M	Tu	W	Th	F	Sa	Su	M	Tu	W	Th
2019	1	2	3	4	5	6	7	8	9	10	11	12	13	14	15	16	17	18	19	20	21	22	23	24	25	26	27	28
	-	-	-	-	-	-	-	-	-	-	-	-	-	-	-	-	-	-	-	-	-	-	-	-	-	-	-	-

Mar	F	Sa	Su	M	Tu	W	Th	F	Sa	Su	M	Tu	W	Th	F	Sa	Su	M	Tu	W	Th	F	Sa	Su							
2019	1	2	3	4	5	6	7	8	9	10	11	12	13	14	15	16	17	18	19	20	21	22	23	24	25	26	27	28	29	30	31
	-	-	-	-	-	-	-	-	-	-	-	-	-	-	-	-	-	-	-	-	-	-	-	-	-	-	-	-	-		

 Reserved

[Month : Next >>](#)

Rental rates - Gîte - Self Catering - Traditional accommodation - from 2 to 7 Person(s)

Rates	Night	Weekend	week	2 weeks	Month
 Low season	\$210*	\$346*	\$580*	-	-
 Mid season	\$210*	\$346*	\$605*	-	-
 High season	\$210*	\$358*	\$778* (Saturday)	-	-

(Check-in day)

[Book now](#)

Booking conditions

• Reservation

- Payment made upon reservation : 45% of rental sum
- Payment balance : 2 weeks before the stay
- Deposit required : \$741\*

• rentals

- Service charges included
- Day tax in addition
- Anticipated supplement for :
  - animals
  - supplementary bed(s)

Accepted methods of payment

- Visa/Delta/Electron
- Bank transfer (wire)
- Check
- Cash
- Holiday coupon

[▶ Book now](#)

[▶ Contact the owner](#)

Contact directly the property owners

[www.iha.com](http://www.iha.com)  
Advert No.  
51255  
[>> Book now <<](#)

Contact

Spoken languages



\* Converted at the rate indicated : €100 = \$123.46 = £88.94

Advert No. 51255

[www.iha.com](http://www.iha.com)

