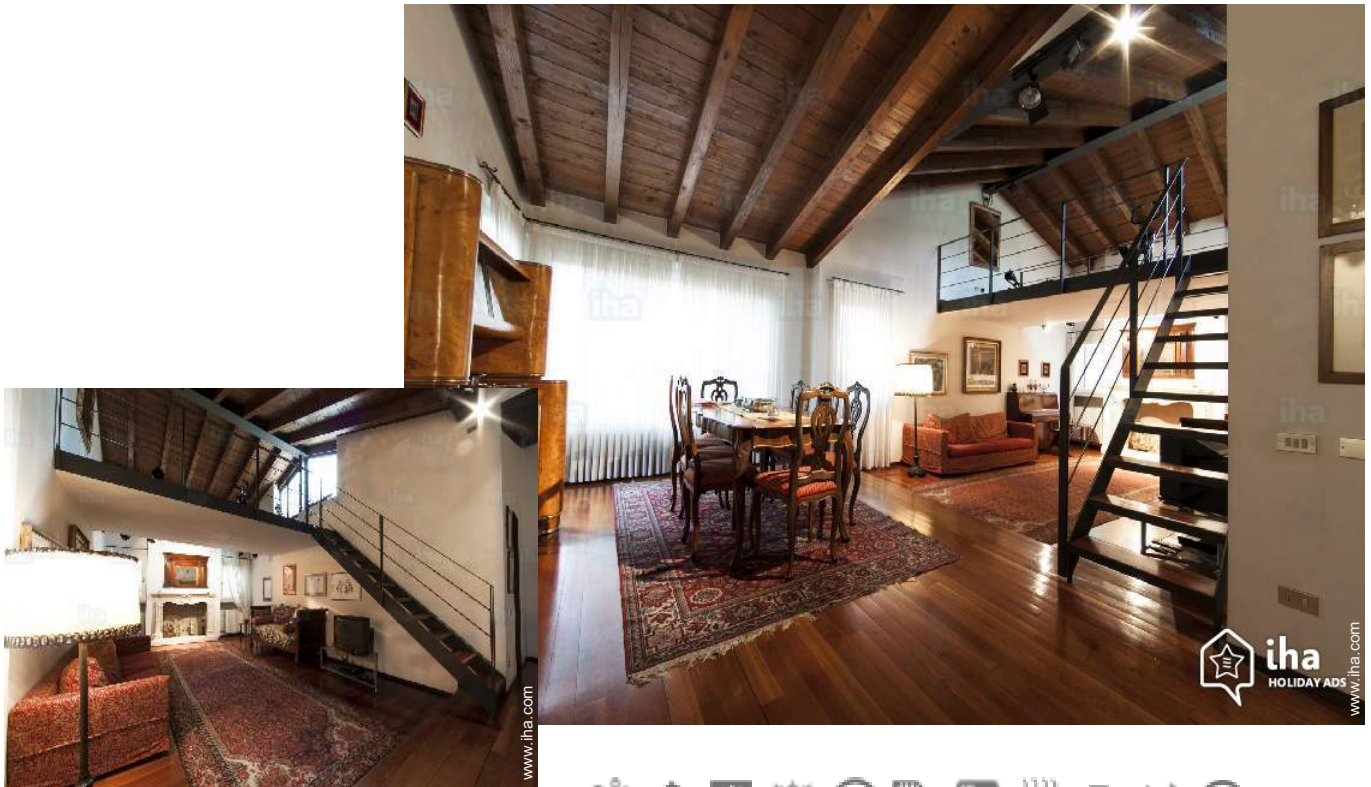


Gîte - Self Catering Verona "Agriturismo DELO"

A fine experience in our family house; a charming, comfortable and quiet House between the Hill and the River in the heart of Verona, a rooftop terrace 300 metres from the Roman amphitheatre and 10 minutes from the arena.



Gîte - Self Catering - Charming Main Farm House, attached home, 2 floors, shared entrance, in(on) a(an) Farm setting

Setting : enchanting, romantic

Capacity : from 20 to 30 person(s)
Bedroom(s) : 10

Verona - Verona Province (VR) - Veneto

Italy

Advert No. 37176

www.iha.com



>> VACATION HOMES

DIRECT BY OWNERS

Gîte - Self Catering



Gîte - Self Catering - Charming Main Farm House, attached home, 2 floors, shared entrance, in(on) a(an) Farm setting

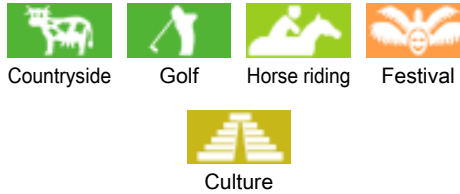
- **Ideal for all age groups, family**
- **View :** panoramic, unobscured, not overlooked, dominant, garden/park, Vineyards
- **Setting :** enchanting, romantic
- **Exposure :** South

" A refined experience life and Italian culture in a House between the Adige river and the Hill, 200 metres from the Roman amphitheatre and the stone bridge (Ponte Pietra), 10 minutes walk from the arena and Juliet's House. A large living room with fireplace of the 18th century, furniture authentic of the 19th century, an attic and a rooftop terrace panoramic; three bedrooms, two bathrooms (one with shower), a large kitchen with washing machine and dryer, wooden floor, air conditioning, free Wi - Fi. This is not a second home, a cold or anonymous, hotel where you can sleep just, but home built and furnished with taste and passion for the residence of the owners. A House that breathes culture and tradition. A « villa » of cities with large volumes, ideal for holidays, travel or tourism; It is an alternative effective and valid compared to ordinary hotels, to enjoy a good wine from Valpolicella in serenity: the magnificent Amarone della Valpolicella and the revision of the family. "

Assets

- **Swimming pool :**
Private swimming pool, rectangular (length 6.5', width 6.5'), heated, illuminated, step ladder, outside shower (open from 'june 01' till 'september 15')
- **Parking :**
Parking uncovered : 14 internal, off road.
- **Advantages :**
Jacuzzi

Surroundings & location



" Ideal to live inside the cultural and artistic life of Verona; to attend important trade fairs enjoying the artistic wealth of a unique city; to enjoy the lyrical and theatrical season with a romantic stroll and visit the surroundings: to go to Venice, or Vicenza to visit the villas of Palladio, or in the magnificent Mantova di Mantegna or to see Lake Garda. Convenient for the station and the airport of Verona, allows easy access by train and by plane. "

Leisure

- **Leisure activities less than 12 miles :**
Bathing, canoeing, rafting, golf, tennis, riding school, pathway/broadwalk, coastal/forest paths, hiking, mountain bike (path), kite flying, parachuting, Microlights, flying (club), glider (club), horse trekking, mini-golf, hunting, fishing, fishing
- **Supervised :**
Dive school, tennis school, riding school
- **Attractions and relaxation :**
Bar/pub, discotheque, restaurant, movie theater, open air summer movie theater, park and garden, leisure park, zoo/animal park, nature reserve, exhibition center, art gallery, historical site, museum, theater, summer theater, opera house, festivals, antiques & bric-a-brac, local craftstore, cellar and wine tasting, thermal baths, sauna, steam baths, health spa, beauticians, fitness center

Surroundings

- **Locality :**
Ski slopes 18.5mi.
Ice skating rink 18.5mi.
Heated swimming pool 3mi.
Sandy beach 18.5mi.
Public swimming pool 3mi.
Public tennis court 3mi.
18 hole golf course 18.5mi.
Flying clubs 9mi.
Windsurfing spots 18.5mi.
Watersports centre 18.5mi.
River 6mi.
Lake 18.5mi.
Mountain range 18.5mi.
Slipway 18.5mi.
Via ferrata-alpinism 18.5mi.

- **Amenities :**
Downtown 4.5mi.
Bus stop / bus station 0.62mi.
Bike/mountain bike hire 2.5mi.
Car rental 6mi.
Breadstore 2.5mi.

Local stores 4.5mi.
Supermarket 3mi.
High class retailers 4.5mi.
Hairdressing salon 2.5mi.
Internet cafe 4.5mi.
Mail office 0.62mi.
Bank 3mi.
Drugstore 3mi.
Hospital 6mi.



sitting room



sitting room



sitting room

Interior

- **Receive up to :**
from 20 to 30 person(s) (30 adults)
- **Liveable floor area :**
8,600 Sq.ft.
- **Interior layout :**
10 bedroom(s), 11 bathroom, 11 shower room, 11 toilets, living room 300 Sq.ft., sitting room 300 Sq.ft., dining room, reading room, laundry room, veranda
- **Sleeps - bed(s) :**
9 full bed(s), 9 king-size bed(s), 2 sleeper sofa(s) 2 pers, 2 twin bed(s), 1 sleeper sofa (s) 1 pers, 1 baby cradle, 10 possible extra bed(s)
- **Guest facilities :**
Fireplace, T.V., book collection, phone, fax, computer, internet access, high speed internet access, wifi, wardrobe, Hanging wardrobe, safe deposit box, hair dryer, fly screens, fully air-conditioned, mobile cool air fan, central heating, electric heating, Drapes, Double glazed, remote controlled gates
- **Appliances :**
Washing machine, clothes dryer, iron, ironing board

Exterior

- **Ground surface :**
7.5 acres
- **Outside setting :**
Private courtyard > 0.25 acre, enclosed grounds 7.5 acres, yard 5,400 Sq.ft., landscaped yard > 0.25 acre, lawn > 0.25 acre, woody 0.62 acre, olive grove 1.5 acre, kitchen garden 1,076 Sq.ft.
- **Outside amenities :**
Summer living area, yard table(s), 20 yard seat(s), parasol, yard seated area, 3 chaise (s) longue(s), 10 sun recliner(s), outside shower facilities



separate kitchen

Services

- **washing :**
Sheets, Towels, Comforter(s), Pillows
- **Single family home :**
Cleaning, Parking, Airport transfers supplement (+\$62*)
- **Restauration :**
Breakfast

For your guidance

- **For your guidance**
Kids welcome
No pet allowed
Non smoking rental, cell phone network coverage, personal transport advisable
Water : hot/cold
Local voltage supply : 220-240V / 50Hz



sitting room

Photo album - 1



sitting room



sitting room



sitting room



sitting room



sitting room



separate kitchen

Photo album - 2



master bedroom



large bedroom



bedroom



bathroom



shower room



overall view

Location



Location & Access



GPS coordinates in degrees, minutes, seconds: Latitude 45°26'59"N - Longitude 10°59'51"E ([Dwelling](#))

Address

→ Via G.B. Moschini 12
37129 Verona

- Venice : (65mi.)
- Mantua : (25mi.)

• Freeway (exit) VERONA EST

→ Verona, Verona Province, Veneto, Italy
→ Distance : 7,5mi.
→ Time : 10'

• Airport Villafranca

→ Verona, Verona Province, Veneto, Italy
→ Distance : 17,5mi.
→ Time : 20'

• Railroad station Verona Porta Nuova

→ Verona, Verona Province, Veneto, Italy
→ Distance : 6mi.
→ Time : 15'

- Vicenza : (28mi.)

Contact

Spoken languages



Gîte - Self Catering
Verona - Italy
"Agriturismo DELO"

Availability calendar - from : march 2018

Mar	Th	F	Sa	Su	M	Tu	W	Th	F	Sa	Su	M	Tu	W	Th	F	Sa	Su	M	Tu	W	Th	F	Sa	Su	M	Tu	W	Th	F	Sa
2018	1	2	3	4	5	6	7	8	9	10	11	12	13	14	15	16	17	18	19	20	21	22	23	24	25	26	27	28	29	30	31
																-	-	-	-	-	-	-	-	-	-	-	-	-	-	-	

Apr	Su	M	Tu	W	Th	F	Sa	Su	M	Tu	W	Th	F	Sa	Su	M	Tu	W	Th	F	Sa	Su	M							
2018	1	2	3	4	5	6	7	8	9	10	11	12	13	14	15	16	17	18	19	20	21	22	23	24	25	26	27	28	29	30
	-	-	-	-	-	-	-	-	-	-	-	-	-	-	-	-	-	-	-	-	-	-	-	-	-	-	-	-	-	

May	Tu	W	Th	F	Sa	Su	M	Tu	W	Th	F	Sa	Su	M	Tu	W	Th	F	Sa	Su	M	Tu	W	Th	F	Sa	Su	M	Tu	W	Th
2018	1	2	3	4	5	6	7	8	9	10	11	12	13	14	15	16	17	18	19	20	21	22	23	24	25	26	27	28	29	30	31
	-	-	-	-	-	-	-	-	-	-	-	-	-	-	-	-	-	-	-	-	-	-	-	-	-	-	-	-	-	-	

June	F	Sa	Su	M	Tu	W	Th	F	Sa	Su	M	Tu	W	Th	F	Sa	Su	M	Tu	W	Th	F	Sa							
2018	1	2	3	4	5	6	7	8	9	10	11	12	13	14	15	16	17	18	19	20	21	22	23	24	25	26	27	28	29	30
	-	-	-	-	-	-	-	-	-	-	-	-	-	-	-	-	-	-	-	-	-	-	-	-	-	-	-	-	-	

Jul	Su	M	Tu	W	Th	F	Sa	Su	M	Tu	W	Th	F	Sa	Su	M	Tu	W	Th	F	Sa	Su	M	Tu	W	Th	F	Sa	Su	M	Tu
2018	1	2	3	4	5	6	7	8	9	10	11	12	13	14	15	16	17	18	19	20	21	22	23	24	25	26	27	28	29	30	31
	-	-	-	-	-	-	-	-	-	-	-	-	-	-	-	-	-	-	-	-	-	-	-	-	-	-	-	-	-	-	

Aug	W	Th	F	Sa	Su	M	Tu	W	Th	F	Sa	Su	M	Tu	W	Th	F	Sa	Su	M	Tu	W	Th	F	Sa	Su	M	Tu	W	Th	F
2018	1	2	3	4	5	6	7	8	9	10	11	12	13	14	15	16	17	18	19	20	21	22	23	24	25	26	27	28	29	30	31
	-	-	-	-	-	-	-	-	-	-	-	-	-	-	-	-	-	-	-	-	-	-	-	-	-	-	-	-	-	-	

Sep	Sa	Su	M	Tu	W	Th	F	Sa	Su	M	Tu	W	Th	F	Sa	Su	M	Tu	W	Th	F	Sa	Su							
2018	1	2	3	4	5	6	7	8	9	10	11	12	13	14	15	16	17	18	19	20	21	22	23	24	25	26	27	28	29	30
	-	-	-	-	-	-	-	-	-	-	-	-	-	-	-	-	-	-	-	-	-	-	-	-	-	-	-	-	-	

Oct	M	Tu	W	Th	F	Sa	Su	M	Tu	W	Th	F	Sa	Su	M	Tu	W	Th	F	Sa	Su	M	Tu	W	Th	F	Sa	Su	M	Tu	W
2018	1	2	3	4	5	6	7	8	9	10	11	12	13	14	15	16	17	18	19	20	21	22	23	24	25	26	27	28	29	30	31
	-	-	-	-	-	-	-	-	-	-	-	-	-	-	-	-	-	-	-	-	-	-	-	-	-	-	-	-	-	-	

Nov	Th	F	Sa	Su	M	Tu	W	Th	F	Sa	Su	M	Tu	W	Th	F	Sa	Su	M	Tu	W	Th	F	Sa	Su	M	Tu	W	Th	F
2018	1	2	3	4	5	6	7	8	9	10	11	12	13	14	15	16	17	18	19	20	21	22	23	24	25	26	27	28	29	30
	-	-	-	-	-	-	-	-	-	-	-	-	-	-	-	-	-	-	-	-	-	-	-	-	-	-	-	-	-	

Dec	Sa	Su	M	Tu	W	Th	F	Sa	Su	M	Tu	W	Th	F	Sa	Su	M	Tu	W	Th	F	Sa	Su	M							
2018	1	2	3	4	5	6	7	8	9	10	11	12	13	14	15	16	17	18	19	20	21	22	23	24	25	26	27	28	29	30	31
	-	-	-	-	-	-	-	-	-	-	-	-	-	-	-	-	-	-	-	-	-	-	-	-	-	-	-	-	-		

Gîte - Self Catering
Verona Province - Veneto
"Agriturismo DELO"

8

[Book now](#)

Availability calendar - from : december 2018

Jan	Tu	W	Th	F	Sa	Su	M	Tu	W	Th	F	Sa	Su	M	Tu	W	Th	F	Sa	Su	M	Tu	W	Th							
2019	1	2	3	4	5	6	7	8	9	10	11	12	13	14	15	16	17	18	19	20	21	22	23	24	25	26	27	28	29	30	31
-	-	-	-	-	-	-	-	-	-	-	-	-	-	-	-	-	-	-	-	-	-	-	-	-	-	-	-	-	-	-	

Feb	F	Sa	Su	M	Tu	W	Th	F	Sa	Su	M	Tu	W	Th	F	Sa	Su	M	Tu	W	Th								
2019	1	2	3	4	5	6	7	8	9	10	11	12	13	14	15	16	17	18	19	20	21	22	23	24	25	26	27	28	
-	-	-	-	-	-	-	-	-	-	-	-	-	-	-	-	-	-	-	-	-	-	-	-	-	-	-	-	-	-

[Month : Next >>](#)

Rental rates - Gîte - Self Catering - Charming Main Farm House - from 20 to 30 Person(s)

Rates	Night	Weekend	week	2 weeks	Month
 High season	\$407* > 3	\$1235*	\$1852*	\$3457*	\$6543*
 Promotional period	-	-	-	\$3210*	\$6543*

> Minimum Night

[Book now](#)

Booking conditions

• Reservation

→ Payment made upon reservation :
40% of rental sum
→ Payment balance :
on handing over the keys

• rentals

→ Service charges included
→ Day tax in addition
→ Cleaning charge on departure included
→ Anticipated supplement for :
- supplementary bed(s)

[▶ Book now](#)

[▶ Contact the owner](#)

Accepted methods of payment

• Visa/Delta/Electro • Switch/Maestro •
Bank transfer (wire) • MasterCard/
EuroCard • Cash

Contact directly the property owners

www.iha.com
Advert No.
37176
[>> Book now <<](#)

Contact

Spoken languages



* Converted at the rate indicated : €100 = \$123.46 = £88.94

Advert No. 37176

www.iha.com



[>> VACATION HOMES](#)

DIRECT BY OWNERS