

Luxury vacation rental Central Athens Luxury Penthouse

A modern 107 sq.m cozy penthouse maisonette, with private parking, in a quiet residential area. 15m walk from ancient sites, museums, posh cafes, restaurants, bars, clubs & cultural events. Also perfect to business travelers!



Luxury Penthouse 6nd floor, separate entrance, in(on) a(an) Modern apartment house/building 5 floors

Setting : cultural, urban

Capacity : from 1 to 4 person(s)

Bedroom(s) : 2

Room(s) : 3



Gay friendly ()
Family Holiday Destinations ()

Central Athens - Athens - Attica

Greece

Advert No. 50834

www.iha.com



>> VACATION HOMES

DIRECT BY OWNERS

Luxury vacation rental



Luxury Penthouse 6nd floor, separate entrance, in(on) a(an) Modern apartment house/building 5 floors

- **Ideal for all age groups, singles**
- **View :** city, rooftop
- **Setting :** cultural, urban
- **Exposure :** West

" This nicely decorated 107 sq.m residence is originally offered at the stated prices strictly for 2 people, but can host even up to 7 people if requested, for an extra cost per person per day depending on the season. 1 Child up to 12 y.o. is free and a security deposit is required. For more specific details, booking & pricing, you are welcome to ask. This maisonette that will be to your complete disposal, is secluded and practically positioned on the building's top 4th and 5th floors, allowing for extra private use and peaceful staying. It consists of a fully furnished and spacious living room, a large kitchen, WC and two separate balconies on the lower floor, while on the top floor there is a big bedroom, one slightly smaller one, the main bathroom and a rather large balcony running all along the face of the building. The apartment was only recently renovated and upgraded with exceptional high standard glass windows and doors, that isolate city sounds and insulate from extreme weather. You will also find a solar panel for hot water, air conditioning in all the rooms, fast internet, WiFi, TVs, a fully equipped kitchen with cooking appliances and lots more. "

Assets

- **Parking :**
Parking uncovered : 1 internal.

Surroundings & location



City



Festival



Culture

" The apartment is situated in the heart of the cultural center of Athens. The building is young, small but cozy, friendly, clean, our surrounding neighborhood is safe and belongs to one of the oldest and chic central Athenian sectors. By just taking nice long walks around, you can find many beautiful classical and neoclassical houses and buildings from the prestigious Athenian past. There are many traditional Greek restaurants and 'tavernas' in the area, where great quality delicious local food can be enjoyed. Hidden gems that mostly locals know of... The same goes for the numerous bars and music halls, which are well known not only for their progressive style and music, but also for their classic flavor. They are the favorites of all ages. But there are many more things to explore and do in the center of Athens! For example, you can have an adrenaline and imagination rush by visiting exciting Escape-Rooms, walk, shop and have a typical Greek coffee in the neighboring prestigious Kolonaki district, visit the fabulous nearby National Archaeological Museum, or go all the way to the top of our own Lycabettus hill either on foot, by car, or the lovely local funicular, for a phenomenally panoramic view of Athens, Piraeus, the Med sea and of many more interesting sites! "

Leisure

- **Leisure activities less than 12 miles :**

Ice-skating, bathing, pedalo, snorkelling, banana boat, water skiing, jet ski, sailing, kite surfing, canyoning, golf, tennis, squash, riding school, pathway/broadwalk, coastal/forest paths, hiking, mountain bike (path), kite flying, flying (club), boat trips, horse-drawn carriage, mini-golf, rollerblade/rollerskate (circuit), skate board (ramps), go-karting, RC modelling track, ten-pin bowling, basketball, volleyball

- **Supervised :**

Sailing school, dive school, tennis school, riding school

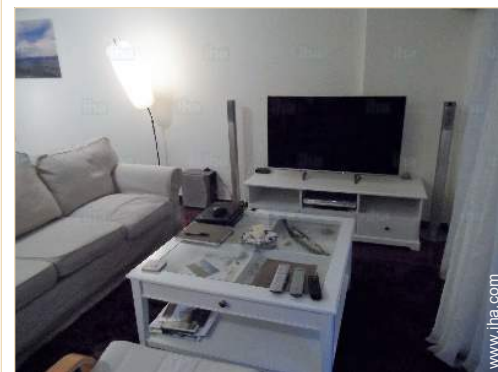
- **Attractions and relaxation :**

Bar/pub, discotheque, restaurant, movie theater, open air summer movie theater, park and garden, leisure park, zoo/animal park, exhibition center, art gallery, historical site, museum, theater, summer theater, opera house, festivals, antiques & bric-a-brac, local craftstore, cellar and wine tasting, sauna, steam baths, health spa, beauticians, fitness center

Surroundings

- **Amenities :**
Kindergarten 990'

Downtown 0.62mi.
Bus stop / bus station <165'
Subway station 0.5mi.
Streetcar system 1.25mi.
Bus pick up point beach 0.3mi.
Ski bus pick up point 0.93mi.
Scooter/motorbike hire 0.62mi.
Car rental 0.62mi.
Household linens for hire/laundry services 330'
Breadstore 330'
Caterer 330'
Local stores 165'
Supermarket 330'
High class retailers 0.5mi.
Hairdressing salon 990'
Internet cafe 330'
Mail office 0.3mi.
Bank 330'
ATM 330'
Drugstore <165'
Doctor 660'
Nurse 660'
Hospital 660'



living room



dining room



dining room

Interior

- **Receive up to :**

from 1 to 4 person(s)

- **Liveable floor area :**

1,076 Sq.ft.

- **Interior layout :**

3 Room(s), 2 bedroom(s), 1 bathroom, 1 shower room, 2 toilets, living room 215 Sq. ft., sitting room 215 Sq.ft., large separate kitchen, dining room, dining area, cosy nook, tv den, bar area, walk-in closet, office, work studio, veranda, loggia

- **Sleeps - bed(s) :**

1 queen-size bed(s), 1 twin bed(s), 3 possible extra bed(s)

- **Guest facilities :**

Elevator, T.V., digital home cinema, hi-fi system, movie collection, t.v points, cable/satellite, high speed internet access, wifi, wardrobe, cupboard, Hanging wardrobe, safe deposit box, hair dryer, fly screens, fully air-conditioned, central heating, Drapes, Blinds, Double glazed, electric shutters, entry phone system, intruder alarm

- **Appliances :**

Crockery/flatware, kitchen utensils, electric coffee maker, toaster, food processor, meat broiler, electric stove, oven, micro-wave oven, extractor hood, refrigerator, deep freeze, dish washer, washing machine, vacuum cleaner, iron, ironing board

Exterior

- **Ground surface :**

1,076 Sq.ft.

- **Outside accommodation :**

Balcony 430 Sq.ft., sundeck 430 Sq.ft.

- **Outside amenities :**

Yard table(s), 4 yard seat(s), 2 sun recliner(s)



view from the balcony

Services

- **washing :**

Sheets supplement (1 X / per week +\$6*), Towels supplement (1 X / per week +\$6*), Linen supplement (1 X / per week +\$12*), Comforter(s), Comforter(s), Pillows

- **Single family home :**

Cleaning supplement (1 X / per week +\$29*), Cleaning on departure, Parking, Airport transfers supplement (+\$29*)

- **Personnel :**

Chauffeur supplement, Laundry supplement, Baby sitting supplement, Beauty treatments supplement, Massage supplement, Guide supplement

For your guidance

- **For your guidance**

Kids welcome

Pets accepted under certain conditions (ask the owner)

Cell phone network coverage, personal transport advisable

Water : hot/cold

Local voltage supply : 220-240V / 50Hz

Electricity supply : mains

- **Handicapped people welcome**

Wheelchair access

Fitted out for the disabled : visually impaired, hard of hearing, mentally

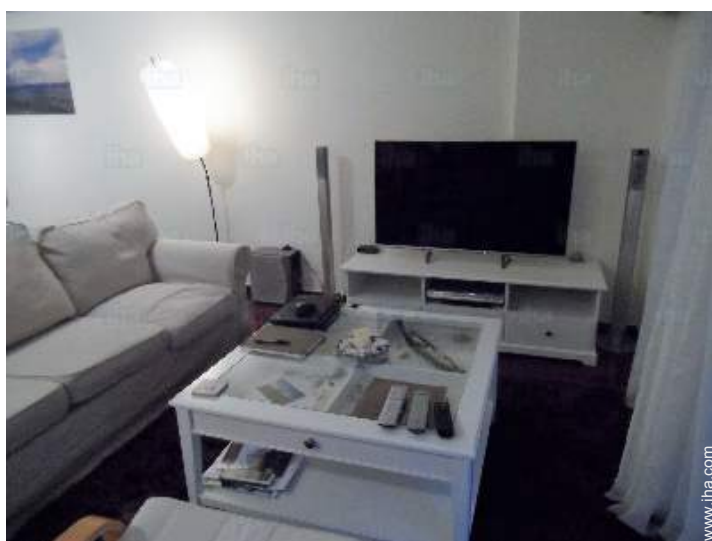


view from the sitting-room

Photo album - 1



dining room



living room



dining room



view from the sitting-room



view from the balcony

Photo album - 2



Kitchen Area

toilets



large separate kitchen

dining area



Interior layout and facilities

Interior layout



owner's bedroom

Photo album - 3



owner's bedroom



sundeck



bathroom



shower room



washing machine



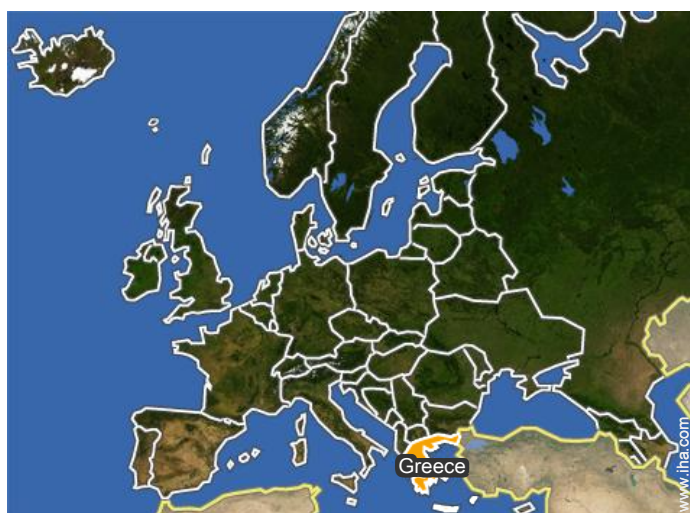
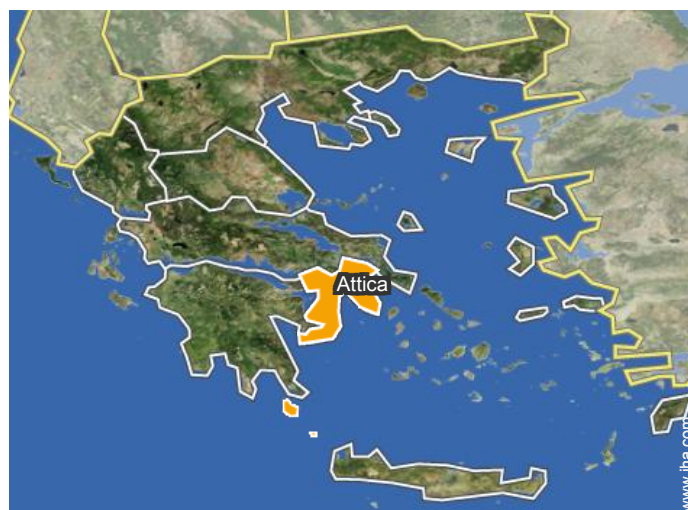
guest bedroom



ironing board


sundeck

Location



Location & Access

" You will find that in this part of the city transportation is quite easy, available and swift! Buss stations are no further than 100 meters away, Athens metro is just 7-10 minutes walk, a taxi can always be found within just a few minutes on the main road right behind our apartment and of course, parking is not an issue, as we provide you with your own parking space at the very building you will be staying! "

 GPS coordinates in degrees, minutes, seconds: Latitude 37°59'8"N - Longitude 23°44'27"E ([Dwelling](#))

Address

→ Τηλεμάχου 22
114 72 Central Athens

• Airport Athens Elefthérios Venizélos

→ Central Athens, Athens, Attica, Greece
→ Distance : 26mi.
→ Time : 40'

• Sea port Piraeus

→ Piraeus, Piraeus Prefecture, Attica, Greece
→ Distance : 7mi.
→ Time : 30'

• Freeway (exit) E75 exit at-into Leof. Athinon

→ Central Athens, Athens, Attica, Greece
→ Distance : 3mi.
→ Time : 15'

• Rafina : (25,5mi.)

• Piraeus : (7mi.)

• Sounion : (43,5mi.)

Contact

Spoken languages



Luxury vacation rental
Athens - Attica
Luxury Penthouse

[Book now](#)

Availability calendar - from : september 2017

Sep	F	Sa	Su	M	Tu	W	Th	F	Sa	Su	M	Tu	W	Th	F	Sa	Su	M	Tu	W	Th	F	Sa							
2017	1	2	3	4	5	6	7	8	9	10	11	12	13	14	15	16	17	18	19	20	21	22	23	24	25	26	27	28	29	30

Oct	Su	M	Tu	W	Th	F	Sa	Su	M	Tu	W	Th	F	Sa	Su	M	Tu	W	Th	F	Sa	Su	M	Tu	W	Th	F	Sa	Su	M	Tu
2017	1	2	3	4	5	6	7	8	9	10	11	12	13	14	15	16	17	18	19	20	21	22	23	24	25	26	27	28	29	30	31

Nov	W	Th	F	Sa	Su	M	Tu	W	Th	F	Sa	Su	M	Tu	W	Th	F	Sa	Su	M	Tu	W	Th							
2017	1	2	3	4	5	6	7	8	9	10	11	12	13	14	15	16	17	18	19	20	21	22	23	24	25	26	27	28	29	30

Dec	F	Sa	Su	M	Tu	W	Th	F	Sa	Su	M	Tu	W	Th	F	Sa	Su	M	Tu	W	Th	F	Sa	Su							
2017	1	2	3	4	5	6	7	8	9	10	11	12	13	14	15	16	17	18	19	20	21	22	23	24	25	26	27	28	29	30	31

Jan	M	Tu	W	Th	F	Sa	Su	M	Tu	W	Th	F	Sa	Su	M	Tu	W	Th	F	Sa	Su	M	Tu	W							
2018	1	2	3	4	5	6	7	8	9	10	11	12	13	14	15	16	17	18	19	20	21	22	23	24	25	26	27	28	29	30	31




Feb	Th	F	Sa	Su	M	Tu	W	Th	F	Sa	Su	M	Tu	W	Th	F	Sa	Su	M	Tu	W								
2018	1	2	3	4	5	6	7	8	9	10	11	12	13	14	15	16	17	18	19	20	21	22	23	24	25	26	27	28	

Mar	Th	F	Sa	Su	M	Tu	W	Th	F	Sa	Su	M	Tu	W	Th	F	Sa	Su	M	Tu	W	Th	F	Sa							
2018	1	2	3	4	5	6	7	8	9	10	11	12	13	14	15	16	17	18	19	20	21	22	23	24	25	26	27	28	29	30	31

Apr	Su	M	Tu	W	Th	F	Sa	Su	M	Tu	W	Th	F	Sa	Su	M	Tu	W	Th	F	Sa	Su	M							
2018	1	2	3	4	5	6	7	8	9	10	11	12	13	14	15	16	17	18	19	20	21	22	23	24	25	26	27	28	29	30

May	Tu	W	Th	F	Sa	Su	M	Tu	W	Th	F	Sa	Su	M	Tu	W	Th	F	Sa	Su	M	Tu	W	Th							
2018	1	2	3	4	5	6	7	8	9	10	11	12	13	14	15	16	17	18	19	20	21	22	23	24	25	26	27	28	29	30	31

June	F	Sa	Su	M	Tu	W	Th	F	Sa	Su	M	Tu	W	Th	F	Sa	Su	M	Tu	W	Th	F	Sa							
2018	1	2	3	4	5	6	7	8	9	10	11	12	13	14	15	16	17	18	19	20	21	22	23	24	25	26	27	28	29	30

 High season  Mid season  Low season



Luxury vacation rental
Central Athens - Greece
Luxury Penthouse

9

[Book now](#)

Availability calendar - from : june 2018

Jul	Su	M	Tu	W	Th	F	Sa	Su	M	Tu	W	Th	F	Sa	Su	M	Tu	W	Th	F	Sa	Su	M	Tu							
2018	1	2	3	4	5	6	7	8	9	10	11	12	13	14	15	16	17	18	19	20	21	22	23	24	25	26	27	28	29	30	31

Aug	W	Th	F	Sa	Su	M	Tu	W	Th	F	Sa	Su	M	Tu	W	Th	F	Sa	Su	M	Tu	W	Th	F							
2018	1	2	3	4	5	6	7	8	9	10	11	12	13	14	15	16	17	18	19	20	21	22	23	24	25	26	27	28	29	30	31



High season



Mid season



Low season

[Month : Next >>](#)

Rental rates - Luxury Penthouse - from 1 to 4 Person(s)

Rates	Night	Weekend	week	2 weeks	Month
Low season	\$59* > 5	-	\$411*	\$821*	\$1642*
Mid season	\$70* > 5	-	\$493*	\$985*	\$1970*
High season	\$94* > 5	-	\$657*	\$1314*	\$2627*

> Minimum Night

[Book now](#)

Booking conditions

• Reservation

→ Payment made upon reservation :
30% of rental sum
→ Payment balance :
1 day before the stay

• rentals

→ Service charges included
→ Day tax included
→ Cleaning charge on departure included
→ Anticipated supplement for :
- supplementary bed(s)

[▶ Book now](#)

[▶ Contact the owner](#)

Accepted methods of payment

• Bank transfer (wire) • PayPal • Cash

Contact directly the property owners

www.iha.com

Advert No.

50834

[>> Book now <<](#)

Contact

Spoken languages



* Converted at the rate indicated : €100 = \$117.29 = £89.59

Advert No. 50834

www.iha.com



[>> VACATION HOMES](#)

DIRECT BY OWNERS