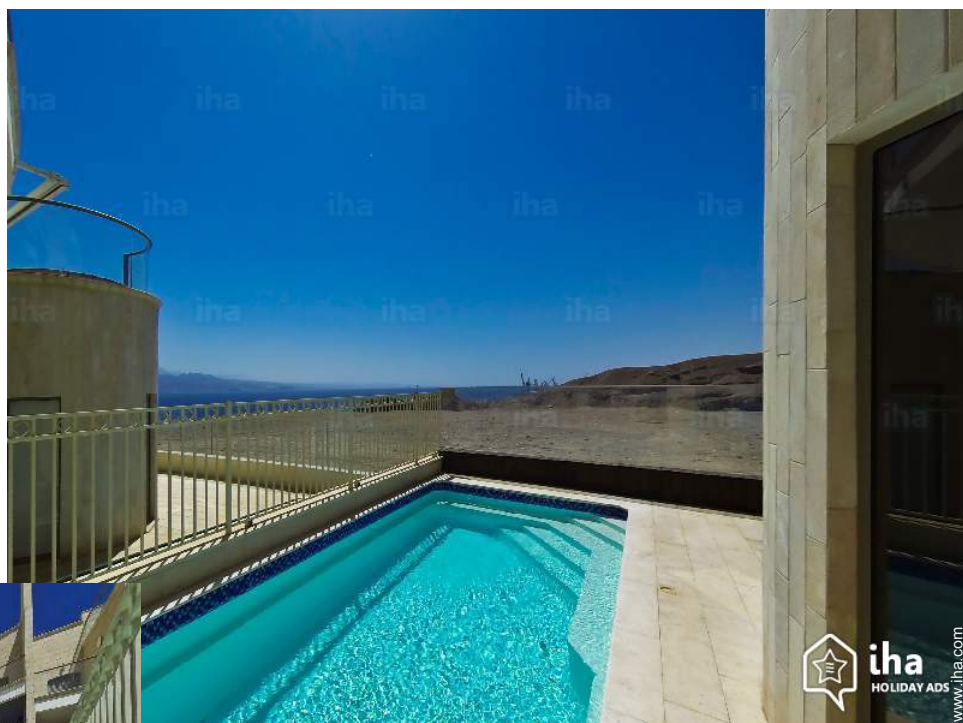


Luxury vacation rental Eilat "Residence Aquarelle"



Luxury Apartment - Flat first floor, shared entrance, in(on) a(an) Private estate 2 floors

Setting : exclusive, luxurious

Capacity : from 1 to 6 person(s)

Bedroom(s) : 3

Room(s) : 4

Eilat

Israel

Reservation : +972 (9) 7742252 (Israel)

www.iha.com

Advert No. 18048



>> VACATION HOMES

DIRECT BY OWNERS

Luxury vacation rental



Luxury Apartment - Flat first floor, shared entrance, in(on) a(an) Private estate 2 floors

- **Ideal for all age groups**
- **View :** panoramic, unobscured, sea/ocean, swimming pool, fantastic sunset, nightlights
- **Setting :** exclusive, luxurious
- **Exposure :** South

Assets

- **Swimming pool :**
Private swimming pool, rectangular (length 13', width 6.5'), illuminated, steps in, outside shower
- **Parking :**
Parking uncovered : 1 reserved stall.



overall view

Surroundings & location



Leisure

- **Leisure activities less than 12 miles :**
Bathing, pedalo, snorkelling, scuba diving, Scuba diving (Standard diving dress), banana boat, water skiing, jet ski, surfing, windsurfing, sailing, kite surfing, tennis, riding school, parascending, boat trips, horse trekking, ATV/Quad Bike, go-karting, RC modelling track, RC aeromodelling field, ten-pin bowling, baseball, basketball, volleyball, fishing, deep-sea fishing, fishing, spear fishing, pétanque field
- **Supervised :**
Sailing school, dive school, tennis school
- **Attractions and relaxation :**
Bar/pub, discotheque, restaurant, movie theater, open air summer movie theater, karaoke, park and garden, leisure park, zoo/animal park, sea world, nature reserve, exhibition center, art gallery, historical site, museum, theater, summer theater, festivals, local craftstore, cellar and wine tasting, casino, sauna, steam baths, health spa, beauticians, fitness center, Bio farm

Surroundings

- **Locality :**
Sea/ocean
Sandy beach
Shingle beach
Rocky beach
Public swimming pool
Public tennis court
Watersports centre
Mountain range
Marina
- **Amenities :**
Downtown
Bus stop / bus station
Bus pick up point beach
Car rental
Boat rental
Scuba diving material hire
Household linens for hire/laundry services
Breadstore
Caterer
Local stores
Supermarket
High class retailers
Hairdressing salon
Internet cafe
Mail office
Bank
ATM
Drugstore
Doctor
Nurse
Hospital

Dispensary



View



Guest facilities



View

Interior

- **Receive up to :**

from 1 to 6 person(s) (4 adults, 2 kids)

- **Liveable floor area :**

1,300 Sq.ft.

- **Interior layout :**

4 Room(s), 3 bedroom(s), 1 bathroom, 1 shower room, 2 toilets, living room 323 Sq. ft., sitting room, american style kitchen, dining room, dining area, tv den, patio, veranda

- **Sleeps - bed(s) :**

1 full bed(s), 1 queen-size bed(s), 1 sleeper sofa(s) 2 pers

- **Guest facilities :**

T.V., t.v points, phone, computer, cable/satelite, internet access, high speed internet access, wifi, wardrobe, cupboard, Hanging wardrobe, radio alarmclock, hair dryer, power shower, fully air-conditioned, Glazed in area, Drapes, Blinds, electric shutters, entry phone system, intruder alarm

- **Appliances :**

Crockery/flatware, kitchen utensils, cafetiere, electric coffee maker, electric kettle, toaster, juicer, food processor, meat broiler, electric stove, electric hobs, oven, micro-wave oven, extractor hood, refridgerator, deep freeze, ice maker, dish washer, washing machine, iron, ironing board

Exterior

- **Ground surface :**

2,150 Sq.ft.

- **Outside accommodation :**

Terrace 323 Sq.ft., covered terrace 215 Sq.ft.

- **Outside amenities :**

Summer living area, BBQ, yard table(s), 6 yard seat(s), trolley on wheels, parasol, yard seated area, 2 chaise(s) longue(s), sun lounger, outside shower facilities



unobscured view

Services

- **washing :**

Sheets, Towels, Linen, Beach towels, Comforter(s), Comforter(s), Pillows

- **Single family home :**

Cleaning supplement, Cleaning on departure supplement, Yard/swimming pool maintenance (1 X / per week), Parking

- **Personnel :**

Staff supplement

For your guidance

- **For your guidance**

Kids welcome

Pets friendly

Cell phone network coverage, personal transport advisable

Water : hot/cold

Local voltage supply : 220-240V / 50Hz

Electricity supply : mains



View

Photo album - 1



overall view



Guest facilities



View



View



View

Photo album - 2



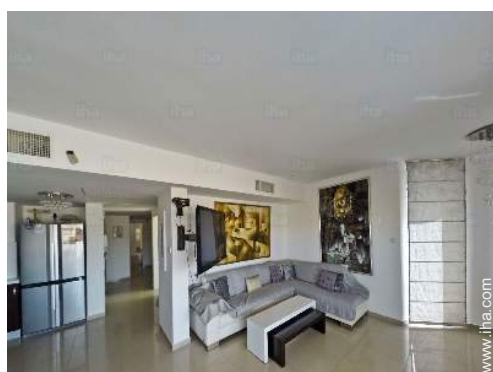
unobscured view



View



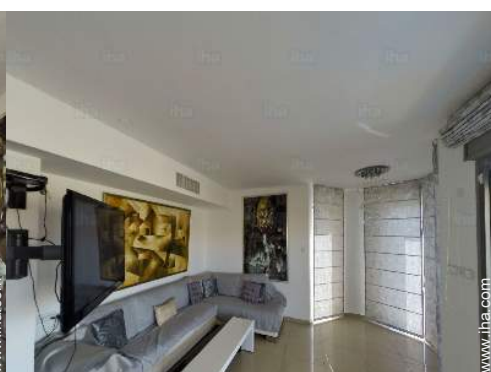
View



sitting room



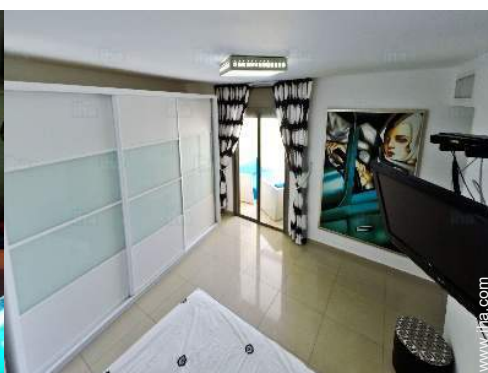
dining room



dining room



sitting room



bedroom



sitting room

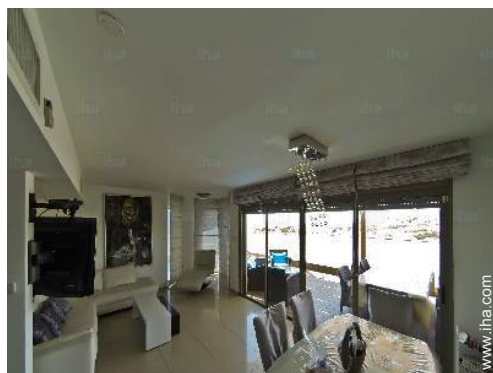


tv den

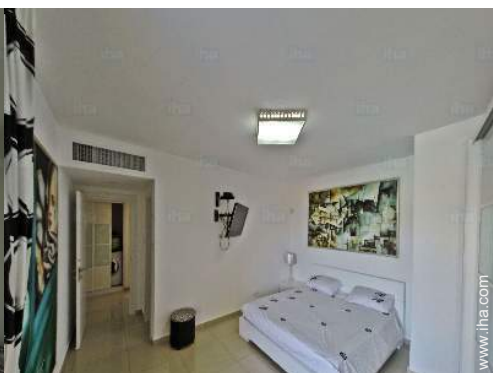


view from the sitting-room

Photo album - 3



dining room



master bedroom



bathroom



shower room



bathroom



full bed(s)



bedroom



bedroom



shower room



the decor

Guest facilities

Location



Location & Access



GPS coordinates in degrees, minutes, seconds: Latitude 29° 32'44"N - Longitude 34°56'49"E (Dwelling)

Address

→ Lotus 34/1
88000 Eilat

• Airport Eilat J. Hozman

→ Eilat, Israel
→ Distance : 1.25mi.
→ Time : 5'

• Bus station Eilat

→ Eilat, Israel
→ Distance : 0.93mi.
→ Time : 5'

• Freeway (exit) Eilat

→ Eilat, Israel
→ Distance : 1.85mi.
→ Time : 5'

- Eilat : (0.62mi.)
- Aqaba : (4.5mi.)
- Taba : (4.5mi.)

Contact

Spoken languages



Luxury vacation rental
Eilat - Israel
"Residence Aquarelle"

Availability calendar - from : january 2019

Jan	Tu	W	Th	F	Sa	Su	M	Tu	W	Th	F	Sa	Su	M	Tu	W	Th	F	Sa	Su	M	Tu	W	Th							
2019	1	2	3	4	5	6	7	8	9	10	11	12	13	14	15	16	17	18	19	20	21	22	23	24	25	26	27	28	29	30	31
																	-	-	-	-	-	-	-	-	-	-	-	-	-	-	

Feb	F	Sa	Su	M	Tu	W	Th	F	Sa	Su	M	Tu	W	Th	F	Sa	Su	M	Tu	W	Th								
2019	1	2	3	4	5	6	7	8	9	10	11	12	13	14	15	16	17	18	19	20	21	22	23	24	25	26	27	28	
	-	-	-	-	-	-	-	-	-	-	-	-	-	-	-	-	-	-	-	-	-	-	-	-	-	-	-	-	-

Mar	F	Sa	Su	M	Tu	W	Th	F	Sa	Su	M	Tu	W	Th	F	Sa	Su	M	Tu	W	Th	F	Sa	Su							
2019	1	2	3	4	5	6	7	8	9	10	11	12	13	14	15	16	17	18	19	20	21	22	23	24	25	26	27	28	29	30	31
	-	-	-	-	-	-	-	-	-	-	-	-	-	-	-	-	-	-	-	-	-	-	-	-	-	-	-	-	-	-	

Apr	M	Tu	W	Th	F	Sa	Su	M	Tu	W	Th	F	Sa	Su	M	Tu	W	Th	F	Sa	Su	M	Tu							
2019	1	2	3	4	5	6	7	8	9	10	11	12	13	14	15	16	17	18	19	20	21	22	23	24	25	26	27	28	29	30
	-	-	-	-	-	-	-	-	-	-	-	-	-	-	-	-	-	-	-	-	-	-	-	-	-	-	-	-	-	-

May	W	Th	F	Sa	Su	M	Tu	W	Th	F	Sa	Su	M	Tu	W	Th	F	Sa	Su	M	Tu	W	Th	F							
2019	1	2	3	4	5	6	7	8	9	10	11	12	13	14	15	16	17	18	19	20	21	22	23	24	25	26	27	28	29	30	31
	-	-	-	-	-	-	-	-	-	-	-	-	-	-	-	-	-	-	-	-	-	-	-	-	-	-	-	-	-	-	

June	Sa	Su	M	Tu	W	Th	F	Sa	Su	M	Tu	W	Th	F	Sa	Su	M	Tu	W	Th	F	Sa	Su							
2019	1	2	3	4	5	6	7	8	9	10	11	12	13	14	15	16	17	18	19	20	21	22	23	24	25	26	27	28	29	30
	-	-	-	-	-	-	-	-	-	-	-	-	-	-	-	-	-	-	-	-	-	-	-	-	-	-	-	-	-	-

Jul	M	Tu	W	Th	F	Sa	Su	M	Tu	W	Th	F	Sa	Su	M	Tu	W	Th	F	Sa	Su	M	Tu	W							
2019	1	2	3	4	5	6	7	8	9	10	11	12	13	14	15	16	17	18	19	20	21	22	23	24	25	26	27	28	29	30	31
	-	-	-	-	-	-	-	-	-	-	-	-	-	-	-	-	-	-	-	-	-	-	-	-	-	-	-	-	-	-	

Aug	Th	F	Sa	Su	M	Tu	W	Th	F	Sa	Su	M	Tu	W	Th	F	Sa	Su	M	Tu	W	Th	F	Sa							
2019	1	2	3	4	5	6	7	8	9	10	11	12	13	14	15	16	17	18	19	20	21	22	23	24	25	26	27	28	29	30	31
	-	-	-	-	-	-	-	-	-	-	-	-	-	-	-	-	-	-	-	-	-	-	-	-	-	-	-	-	-	-	

Sep	Su	M	Tu	W	Th	F	Sa	Su	M	Tu	W	Th	F	Sa	Su	M	Tu	W	Th	F	Sa	Su	M							
2019	1	2	3	4	5	6	7	8	9	10	11	12	13	14	15	16	17	18	19	20	21	22	23	24	25	26	27	28	29	30
	-	-	-	-	-	-	-	-	-	-	-	-	-	-	-	-	-	-	-	-	-	-	-	-	-	-	-	-	-	-

Oct	Tu	W	Th	F	Sa	Su	M	Tu	W	Th	F	Sa	Su	M	Tu	W	Th	F	Sa	Su	M	Tu	W	Th							
2019	1	2	3	4	5	6	7	8	9	10	11	12	13	14	15	16	17	18	19	20	21	22	23	24	25	26	27	28	29	30	31
	-	-	-	-	-	-	-	-	-	-	-	-	-	-	-	-	-	-	-	-	-	-	-	-	-	-	-	-	-	-	

Luxury vacation rental
Eilat - Israel
"Residence Aquarelle"

9

[Book now](#)


Availability calendar - from : october 2019

Nov	F	Sa	Su	M	Tu	W	Th	F	Sa	Su	M	Tu	W	Th	F	Sa	Su	M	Tu	W	Th	F	Sa							
2019	1	2	3	4	5	6	7	8	9	10	11	12	13	14	15	16	17	18	19	20	21	22	23	24	25	26	27	28	29	30
	-	-	-	-	-	-	-	-	-	-	-	-	-	-	-	-	-	-	-	-	-	-	-	-	-	-	-	-	-	

Dec	Su	M	Tu	W	Th	F	Sa	Su	M	Tu	W	Th	F	Sa	Su	M	Tu	W	Th	F	Sa	Su	M	Tu							
2019	1	2	3	4	5	6	7	8	9	10	11	12	13	14	15	16	17	18	19	20	21	22	23	24	25	26	27	28	29	30	31
	-	-	-	-	-	-	-	-	-	-	-	-	-	-	-	-	-	-	-	-	-	-	-	-	-	-	-	-	-	-	

[Month : Next >>](#)

Rental rates - Luxury Apartment - Flat - from 1 to 6 Person(s)

Rates	Night	Weekend	week	2 weeks	Month
 Low season	-	-	\$818*	\$1519*	\$2921*
 Mid season	-	-	\$1169*	\$2220*	\$4323*
 High season	-	-	\$1753*	\$2921*	\$5609*

[Book now](#)

Booking conditions

• Reservation

- Payment made upon reservation : 30% of rental sum
- Payment balance : on handing over the keys
- Deposit required : \$1169*

• rentals

- Service charges included
- Day tax included
- Cleaning charge levy on departure : \$58*

[▶ Book now](#)

[▶ Contact the owner](#)

Accepted methods of payment

- Bank transfer (wire)
- Check
- Draft
- Cash

Contact directly the property owners

www.iha.com
Advert No.
18048
[>> Book now <<](#)

Contact

Spoken languages



* Converted at the rate indicated : €100 = \$116.85 = £89

Advert No. 18048

www.iha.com



[>> VACATION HOMES](#)

DIRECT BY OWNERS