

Luxury vacation rental Estoril's Coast "ERICEIRA VILA - (11201 / AL)"

The Villa comprises : 4 bedrooms, 5 rooms, 5 bathrooms, 2 terraces, fully equipped kitchen, Barbecue, private pool, with 9 m long and 4.5 m wide, private games room. Living room and dining room.



Luxury House, detached, 4 floors, separate entrance, in(on) a(an) Private property

Setting : waterfront, peaceful

Capacity : from 2 to 6 person(s)

Bedroom(s) : 4

Room(s) : 7



Case & Appartamenti per vacanze
Family Holiday Destinations ()

Ericeira - Lisbon District - Lisbon and Tagus Valley
Portugal

Advert No. 15218

www.iha.com



>> VACATION HOMES

DIRECT BY OWNERS



Luxury vacation rental



Luxury House, detached, 4 floors, separate entrance, in(on) a(an) Private property

• **Ideal for all age groups, large families**

- **View :** panoramic, unobscured, not overlooked, sea/ocean, swimming pool, fantastic sunset
- **Setting :** waterfront, peaceful
- **Exposure :** South

" The Villa comprises : 4 bedrooms, 5 rooms, 5 bathrooms, 2 terraces, kitchen, Barbecue, private pool, private games room. Large fully equipped kitchen. Living room and dining room. Private pool with 9 m long and 4.5 m wide. Shallow part is 0,50 cm, deepest part is 2 m. The pool has a terrace with a dining table, (when eating you will have landscape of the ocean in your front). Barbecue with oven, counter top and sink. Large terrace on the top floor, with a splendid ocean view. A beautiful view of the sea front, up to Cabo da Roca (the westernmost point of Europe). Located about 15 minutes walk (or 5) of the Centre of the town of Ericeira, with market fresh fish stalls, supermarkets, cafes, bars, restaurants, disco, etc. Residence ideally located in a quiet and peaceful place. Very spacious, with all possible comfort and careful decoration. With a spectacular view over the sea, and views of the sunset, every day different, unique. Ideally situated for visits to Lisbon, Sintra, Cascais, Mafra, Óbidos, Alcobaça, Fátima sanctuary. Barbecue/Grill. 2 large terraces with a splendid view of the sea. "

Assets

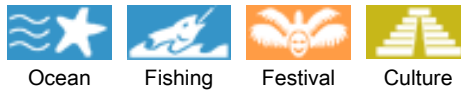
- **Swimming pool :**
Private swimming pool, rectangular (length 30', width 15'), illuminated, steps in, outside shower (open from 'january 01' till 'december 31')
- **Tennis :**
Private tennis
- **Parking :**

Parking uncovered : 1 internal, 2 reserved stall.

- **Advantages :**
Pool table, table football, ping-pong table, 4 ping-pong bats, mini-golf, courtesy car, SUV vehicle, motor boat, rowing boat, sailing boat
- **baby equipment :**
High chair, infant tub

Benefits :
Direct access to the beach, marina mooring space, driving range

Surroundings & location



" Ericeira offers a perfect environment to relax and enjoy the healthy air, the beauty of the beaches of Ericeira and its landscape, excellent food served in restaurants, or the many terraces that populate the town of Ericeira, making it a pleasant place. With clean water, and rich in mineral salts, the iodized beaches of Ericeira are of excellent quality. Such as the fishermen's Beach, Praia do Sul, Praia da Foz do Lizandro, Praia de S. Lourenço, Praia de S. Sebastião or da Ribeira, worldwide recognized as ideal for surfing, BODYBOARDING and SKIMMING, KYTE-SURF, windsurfing, and SURFING with REMO. Ericeira is regarded as the first SURF world Reserve of Europe and considered the best area in Europe for the practice of SURF. 12 beaches have been considered to practice surf in Ericeira: Ribeira, Praia dos Lame, Crazy left, São Lourenço, Reef, Backdoor, white rock, Slaughterhouse, Algodio, Furnas, South Beach, Foz do Lizandro. In the surroundings you can visit various locations: Mafra: Visit an ancient traditional Portuguese village with small houses. Try the bread of Mafra produced and sold on the site. Visit the National Palace of Mafra, Monastery built by the King of Portugal as a promise to the Monks-referred to in the book by the writer José Saramago. SINTRA: 30 km: Visit: Pena Palace; Moorish Castle. "

Leisure

- **Leisure activities less than 12 miles :**
Snowboarding, bathing, pedalo, snorkelling, scuba diving, water skiing, jet ski, surfing, windsurfing, sailing, kite surfing, canoeing, golf, tennis, riding school, pathway/broadwalk, parascending, parachuting, hang-gliding, paragliding, boat trips, horse trekking, donkey rides, mini-golf, skate board (ramps), ATV/Quad Bike, fishing, deep-sea

fishing, fishing, spear fishing

- **Supervised :**
Ski school, sailing school, tennis school, riding school
- **Attractions and relaxation :**
Bar/pub, discotheque, restaurant, movie theater, open air summer movie theater, karaoke, park and garden, leisure park, zoo/animal park, art gallery, historical site, museum, festivals, antiques & bric-a-brac, local craftstore, natural spring baths, thermal baths, sauna, health spa, beauticians, fitness center

Surroundings

- **Locality :**
Sea/ocean
Sandy beach
Shingle beach
Rocky beach
Sea inlet
Public swimming pool
Public tennis court
9 hole golf course
18 hole golf course
Windsurfing spots
Surfing spots
Watersports centre
River
Stretch of water
Marina



Single family home



Single family home



Single family home

Interior

- **Receive up to :**

from 2 to 6 person(s) (6 adults)

- **Liveable floor area :**

2,370 Sq.ft

- **Interior layout :**

7 Room(s), 4 bedroom(s), 5 bathroom, 4 shower room, 5 toilets, living room 430 Sq. ft., sitting room 430 Sq.ft., separate kitchen, dining room, cosy nook, tv den, games room, patio, veranda

- **Sleeps - bed(s) :**

3 full bed(s), 1 queen-size bed(s), 2 twin bed (s), 1 sleeper sofa(s) 1 pers, 2 baby cradle

- **Guest facilities :**

Fireplace, T.V., hi-fi system, vcr, DVD player, video games, board games, book collection, movie collection, cable/satelite, internet access, high speed internet access, wifi, wardrobe, cupboard, hair dryer, central heating, electric heating, Drapes, Blinds, Double glazed, Rolling shutters, entry phone system, intruder alarm, fire alarm

- **Appliances :**

Crockery/flatware, kitchen utensils, cafetiere, electric coffee maker, electric espresso coffee maker, electric kettle, toaster, juicer, food processor, meat broiler, gaz stove, electric stove, electric hobs, oven, mini-oven, micro-wave oven, extractor hood, refridgerator, deep freeze, dish washer, washing machine, clothes dryer, vacuum cleaner, iron, ironing board

Exterior

- **Ground surface :**

1,600 Sq.ft.

- **Outside accommodation :**

Terrace 530 Sq.ft., covered terrace 215 Sq. ft., balcony 130 Sq.ft., sundeck, gazebo

- **Outside setting :**

Private courtyard 970 Sq.ft., enclosed grounds 1,076 Sq.ft., yard 160 Sq.ft.

- **Outside amenities :**

Pizza oven, BBQ, parasol, 8 chaise(s) longue(s), 6 sun recliner(s), outside shower facilities



Single family home

Services

- **washing :**

Sheets (1 X / per week), Towels (1 X / per week), Linen (1 X / per week), Beach towels supplement, Comforter(s) (1 X / per week), Comforter(s) (1 X / per week), Pillows (1 X / per week)

- **Single family home :**

Yard/swimming pool maintenance supplement, Parking, Airport transfers supplement

- **Personnel :**

Staff supplement, Chef(s) supplement, Chauffeur supplement, Guide supplement

- **Restauration :**

BBQ meal supplement, Half board supplement, Full board supplement, Locally produced meals supplement

For your guidance

- **For your guidance**

Kids welcome

No pet allowed

Non smoking rental, cell phone network coverage, personal transport advisable

Water : hot/cold

Local voltage supply : 110-120V / 60Hz

Electricity supply : mains



Single family home

Photo album - 1



Single family home



Single family home



Single family home



Single family home



Single family home



Single family home

Photo album - 2



Single family home



Single family home



Single family home



Single family home



Single family home



Single family home



Single family home



Single family home



Single family home



Single family home



Single family home

Photo album - 3



Single family home



Single family home



Single family home



Single family home



Single family home



Single family home



Single family home



Ocean



Ocean



aerial view

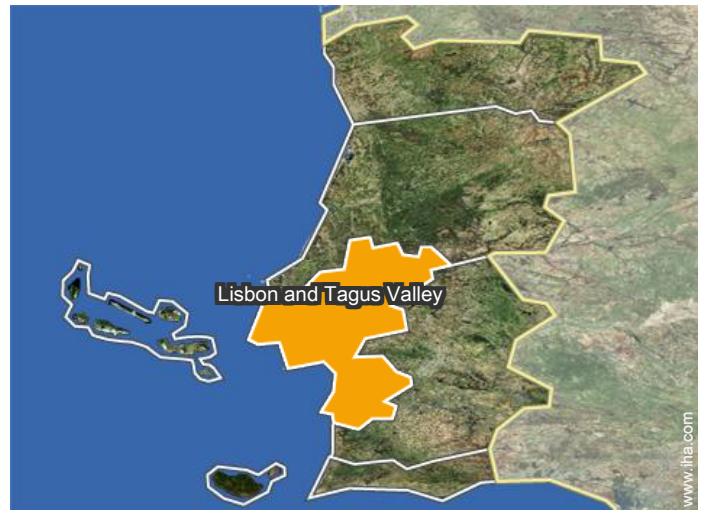
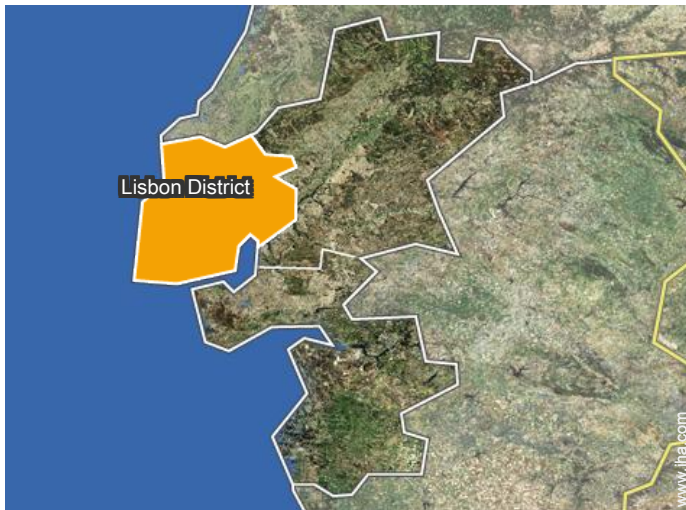


panorama



View

Location



Location & Access

" Located in a quiet neighbourhood, in the beautiful village of Ericeira, it is a 30-minute drive from Lisbon Airport; 5 minutes from the beautiful beaches of Ericeira; near the town and near the beach, and ideally situated for visits to Peniche, Lisbon, Sintra, Cascais, Mafra, Óbidos, Alcobaca, Fátima sanctuary. "



GPS coordinates in degrees, minutes, seconds: Latitude 38°59'1"N - Longitude 9° 24'55"W ([Dwelling](#))

Address

→ Rua Guiomar Carvalho Miranda, lote 90
2655 Ericeira

• Airport Lisbon Portela

→ Lisbon, Lisbon District, Lisbon and Tagus Valley, Portugal
→ Distance : 28mi.
→ Time : 40'

• Freeway (exit) A-21

→ Ericeira, Lisbon District, Lisbon and Tagus Valley, Portugal
→ Distance : 1.5mi.
→ Time : 5'

- Mafra : (6mi.)
- Sintra : (15.5mi.)
- Lisbon : (28mi.)

Contact

Spoken languages



Luxury vacation rental
Estoril's Coast - Portugal
"ERICEIRA VILA - (11201 / AL)"

[Book now](#)

Availability calendar - from : october 2019

Oct	Tu	W	Th	F	Sa	Su	M	Tu	W	Th	F	Sa	Su	M	Tu	W	Th	F	Sa	Su	M	Tu	W	Th							
2019	1	2	3	4	5	6	7	8	9	10	11	12	13	14	15	16	17	18	19	20	21	22	23	24	25	26	27	28	29	30	31

Nov	F	Sa	Su	M	Tu	W	Th	F	Sa	Su	M	Tu	W	Th	F	Sa	Su	M	Tu	W	Th	F	Sa							
2019	1	2	3	4	5	6	7	8	9	10	11	12	13	14	15	16	17	18	19	20	21	22	23	24	25	26	27	28	29	30
	-	-	-	-	-	-	-	-	-	-	-	-	-	-	-	-	-	-	-	-	-	-	-	-	-	-	-	-	-	

Dec	Su	M	Tu	W	Th	F	Sa	Su	M	Tu	W	Th	F	Sa	Su	M	Tu	W	Th	F	Sa	Su	M	Tu							
2019	1	2	3	4	5	6	7	8	9	10	11	12	13	14	15	16	17	18	19	20	21	22	23	24	25	26	27	28	29	30	31
	-	-	-	-	-	-	-	-	-	-	-	-	-	-	-	-	-	-	-	-	-	-	-	-	-	-	-	-	-		

Jan	W	Th	F	Sa	Su	M	Tu	W	Th	F	Sa	Su	M	Tu	W	Th	F	Sa	Su	M	Tu	W	Th	F							
2020	1	2	3	4	5	6	7	8	9	10	11	12	13	14	15	16	17	18	19	20	21	22	23	24	25	26	27	28	29	30	31
	-	-	-	-	-	-	-	-	-	-	-	-	-	-	-	-	-	-	-	-	-	-	-	-	-	-	-	-	-		

Feb	Sa	Su	M	Tu	W	Th	F	Sa	Su	M	Tu	W	Th	F	Sa	Su	M	Tu	W	Th	F	Sa							
2020	1	2	3	4	5	6	7	8	9	10	11	12	13	14	15	16	17	18	19	20	21	22	23	24	25	26	27	28	29
	-	-	-	-	-	-	-	-	-	-	-	-	-	-	-	-	-	-	-	-	-	-	-	-	-	-	-	-	

Mar	Su	M	Tu	W	Th	F	Sa	Su	M	Tu	W	Th	F	Sa	Su	M	Tu	W	Th	F	Sa	Su	M	Tu							
2020	1	2	3	4	5	6	7	8	9	10	11	12	13	14	15	16	17	18	19	20	21	22	23	24	25	26	27	28	29	30	31
	-	-	-	-	-	-	-	-	-	-	-	-	-	-	-	-	-	-	-	-	-	-	-	-	-	-	-	-	-		

Apr	W	Th	F	Sa	Su	M	Tu	W	Th	F	Sa	Su	M	Tu	W	Th	F	Sa	Su	M	Tu	W	Th							
2020	1	2	3	4	5	6	7	8	9	10	11	12	13	14	15	16	17	18	19	20	21	22	23	24	25	26	27	28	29	30
	-	-	-	-	-	-	-	-	-	-	-	-	-	-	-	-	-	-	-	-	-	-	-	-	-	-	-	-	-	

May	F	Sa	Su	M	Tu	W	Th	F	Sa	Su	M	Tu	W	Th	F	Sa	Su	M	Tu	W	Th	F	Sa	Su							
2020	1	2	3	4	5	6	7	8	9	10	11	12	13	14	15	16	17	18	19	20	21	22	23	24	25	26	27	28	29	30	31
	-	-	-	-	-	-	-	-	-	-	-	-	-	-	-	-	-	-	-	-	-	-	-	-	-	-	-	-	-		

June	M	Tu	W	Th	F	Sa	Su	M	Tu	W	Th	F	Sa	Su	M	Tu	W	Th	F	Sa	Su	M	Tu							
2020	1	2	3	4	5	6	7	8	9	10	11	12	13	14	15	16	17	18	19	20	21	22	23	24	25	26	27	28	29	30
	-	-	-	-	-	-	-	-	-	-	-	-	-	-	-	-	-	-	-	-	-	-	-	-	-	-	-	-	-	

Jul	W	Th	F	Sa	Su	M	Tu	W	Th	F	Sa	Su	M	Tu	W	Th	F	Sa	Su	M	Tu	W	Th	F							
2020	1	2	3	4	5	6	7	8	9	10	11	12	13	14	15	16	17	18	19	20	21	22	23	24	25	26	27	28	29	30	31
	-	-	-	-	-	-	-	-	-	-	-	-	-	-	-	-	-	-	-	-	-	-	-	-	-	-	-	-	-		

 Reserved



Luxury vacation rental
Lisbon District - Lisbon and Tagus Valley
"ERICEIRA VILA - (11201 / AL)"

9

[Book now](#)

Availability calendar - from : july 2020

Aug	Sa	Su	M	Tu	W	Th	F	Sa	Su	M	Tu	W	Th	F	Sa	Su	M	Tu	W	Th	F	Sa	Su	M							
2020	1	2	3	4	5	6	7	8	9	10	11	12	13	14	15	16	17	18	19	20	21	22	23	24	25	26	27	28	29	30	31
-	-	-	-	-	-	-	-	-	-	-	-	-	-	-	-	-	-	-	-	-	-	-	-	-	-	-	-	-	-	-	

Sep	Tu	W	Th	F	Sa	Su	M	Tu	W	Th	F	Sa	Su	M	Tu	W	Th	F	Sa	Su	M	Tu	W							
2020	1	2	3	4	5	6	7	8	9	10	11	12	13	14	15	16	17	18	19	20	21	22	23	24	25	26	27	28	29	30
-	-	-	-	-	-	-	-	-	-	-	-	-	-	-	-	-	-	-	-	-	-	-	-	-	-	-	-	-	-	

Reserved

[Month : Next >>](#)

Rental rates - Luxury House - from 2 to 6 Person(s)

Rates	Night	Weekend	week	2 weeks	Month
<input type="checkbox"/> Low season	-	-	\$880* (Saturday)	\$1760* (Saturday)	\$3520* (Saturday)
<input type="checkbox"/> Mid season	-	-	\$1045* (Saturday)	\$2090* (Saturday)	\$4180* (Saturday)
<input type="checkbox"/> High season	-	-	\$1485* (Saturday)	\$2970* (Sunday)	\$5940* (Saturday)

(Check-in day)

[Book now](#)

Booking conditions

• Reservation

- Payment made upon reservation : 25% of rental sum
- Payment balance : on handing over the keys
- Deposit required : \$275*

• rentals

- Service charges included
- Day tax included
- Cleaning charge levy on departure : \$99*

[▶ Book now](#)

[▶ Contact the owner](#)

Accepted methods of payment

- Bank transfer (wire) • Cash

Contact directly the property owners

www.iha.com
Advert No.
15218
[>> Book now <<](#)

Contact

Spoken languages



* Converted at the rate indicated : €100 = \$110 = £91

Advert No. 15218

www.iha.com



[>> VACATION HOMES](#)

DIRECT BY OWNERS