

Luxury vacation rental Templários "Moradia House Villa"



Luxury House, detached, 2 floors, separate entrance, in(on) a(an) Private property

Setting : waterfront, heavenly

Capacity : from 1 to 10 person(s)

Bedroom(s) : 4

Room(s) : 8



Gay friendly ()
Family Holiday Destinations ()



Theme breaks
Valentine's Day

Ferreira do Zêzere - Santarém District - Lisbon and Tagus Valley
Portugal

Advert No. 20638

www.iha.com



>> VACATION HOMES

DIRECT BY OWNERS

Luxury vacation rental



Luxury House, detached, 2 floors, separate entrance, in(on) a(an) Private property

- **Ideal for all age groups, honeymoon**
- **View :** panoramic, mountain, country side, river, lake, fantastic sunset
- **Setting :** waterfront, heavenly
- **Exposure :** South

Assets

- **Parking :**
Parking uncovered : 3 internal.



toilets

Surroundings & location



Ocean



Horse riding



Fishing

Leisure

- **Leisure activities less than 12 miles :**

Bathing, pedalo, snorkelling, banana boat, water skiing, jet ski, surfing, windsurfing, sailing, kite surfing, canoeing, tennis, riding school, pathway/broadwalk, coastal/forest paths, rock climbing, mountain bike (path), flying (club), boat trips, horse trekking, mini-golf, skate board (ramps), go-karting, volleyball, paintball, fishing, fishing

- **Supervised :**

Dive school, riding school

- **Attractions and relaxation :**

Bar/pub, restaurant, park and garden, historical site, local craftstore, natural spring baths

Surroundings

- **Locality :**

Public swimming pool 165'
Watersports centre 0.3mi.
Waterfall 0.5mi.
River <165'
Stretch of water <165'
Lake <165'
Forest <165'
Mountain range 0.62mi.
Slipway 165'
Jetski slipway 165'

- **Amenities :**

Kindergarten 6mi.
Downtown 6mi.
Bus stop / bus station 6mi.
Bike/mountain bike hire 330'
Car rental 12.5mi.
Boat rental 330'
Scuba diving material hire 330'
Household linens for hire/laundry services <165'
Breadstore 6mi.
Caterer 330'
Local stores 330'
Supermarket 6mi.
Hairdressing salon 6mi.
Internet cafe 6mi.
Mail office 6mi.
Bank 6mi.
ATM 6mi.
Drugstore 6mi.
Doctor 6mi.
Nurse 6mi.
Hospital 6mi.
Dispensary 6mi.



interior



full bed(s)



Interior

- **Receive up to :**
from 1 to 10 person(s) (8 adults, 2 kids)
- **Liveable floor area :**
2,700 Sq.ft.
- **Interior layout :**
8 Room(s), 4 bedroom(s), 2 bathroom, 2 shower room, 1 toilets, living room 215 Sq. ft., sitting room 215 Sq.ft., separate kitchen, dining room, cosy nook, tv den, walk-in closet, veranda
- **Sleeps - bed(s) :**
1 full bed(s), 1 queen-size bed(s), 6 twin bed (s), sleeper sofa(s) 1 pers, 1 twin storage bed 1 pers, 1 baby cradle, possible extra bed(s)
- **Guest facilities :**
Fireplace, T.V., DVD player, book collection, t.v points, cable/satelite, cupboard, Hanging wardrobe, hair dryer, fly screens, partly air-conditioned, mobile cool air fan, electric heating, Glazed in area, Drapes, entry phone system, fire alarm, remote controlled gates
- **Appliances :**
Crockery/flatware, kitchen utensils, cafetiere, electric coffee maker, electric espresso coffee maker, electric kettle, toaster, juicer, food processor, meat broiler, electric stove, electric hobs, oven, micro-wave oven, extractor hood, refridgerator, deep freeze, dish washer, washing machine, vacuum cleaner, iron, ironing board

Exterior

- **Ground surface :**
9,700 Sq.ft.
- **Outside accommodation :**
Terrace 215 Sq.ft., covered terrace 215 Sq. ft., balcony 323 Sq.ft.
- **Outside setting :**
Private courtyard 650 Sq.ft., enclosed grounds 9,700 Sq.ft., yard, river
- **Outside amenities :**
BBQ, yard table(s), 8 yard seat(s), parasol



kitchen

Services

- **washing :**
Sheets, Towels, Linen, Beach towels supplement (1 X / per week +\$23*), Comforter(s), Pillows
- **Single family home :**
Cleaning supplement (+\$88*), Cleaning on departure supplement, Airport transfers supplement
- **Personnel :**
Laundry supplement, Baby sitting supplement, Massage supplement, Guide supplement
- **Restauration :**
Breakfast supplement, Locally produced meals supplement

For your guidance

- **For your guidance**
Kids welcome
Pets friendly
Cell phone network coverage, personal transport advisable
Water : hot/cold
Local voltage supply : 220V / 60Hz
Electricity supply : mains



Guest facilities

Photo album - 1



toilets



full bed(s)



interior



Guest facilities

Photo album - 2



kitchen



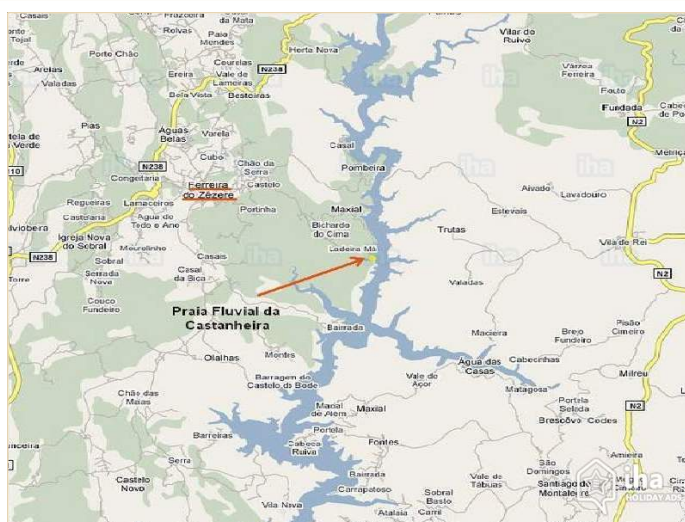
Outside setting



[Theme breaks](#)

Valentine's Day

Route map



Location & Access



GPS coordinates in degrees, minutes, seconds: Latitude 39° 40'39"N - Longitude 8° 14'3"W ([Dwelling](#))

Address

→ Lago Azul - Castanheira
2240 Ferreira do Zêzere

• [Airport Lisbon Portela](#)

→ Lisbon, Lisbon District, Lisbon and Tagus Valley, Portugal
→ Distance : 92mi.
→ Time : 1h30'

• [Airport Porto Francisco Sá Carneiro](#)

→ Porto, Porto District, Norte Region (Portugal), Portugal
→ Distance : 112mi.
→ Time : 2h

• [Bus station Ferreira do Zêzere](#)

→ Ferreira do Zêzere, Santarém District, Lisbon and Tagus Valley, Portugal
→ Distance : 6mi.
→ Time : 10'

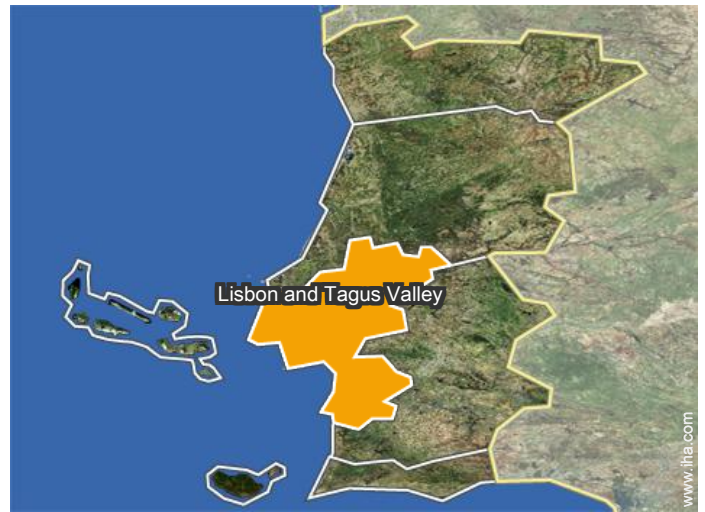
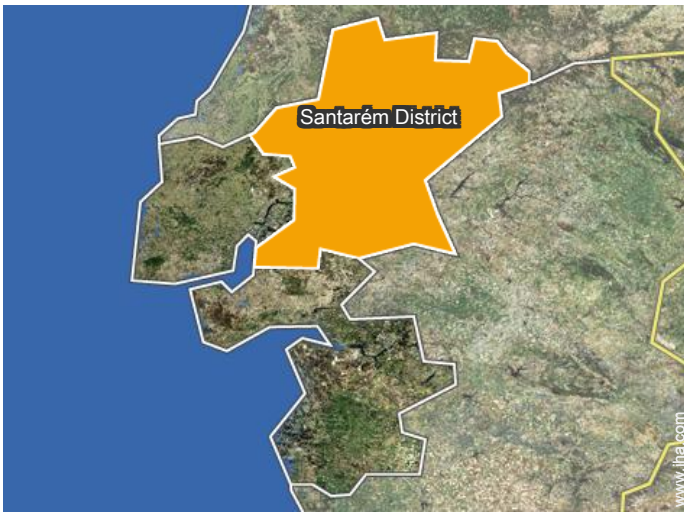
- Ferreira do Zêzere : (6mi.)
- Tomar : (12.5mi.)
- Fátima : (25mi.)

Contact

Spoken languages



Location



Luxury vacation rental
Santarém District - Lisbon and Tagus Valley
"Moradia House Villa"

[Book now](#)

Availability calendar - from : november 2017

Nov	W	Th	F	Sa	Su	M	Tu	W	Th	F	Sa	Su	M	Tu	W	Th	F	Sa	Su	M	Tu	W	Th	F	Sa	Su	M	Tu	W	Th		
2017	1	2	3	4	5	6	7	8	9	10	11	12	13	14	15	16	17	18	19	20	21	22	23	24	25	26	27	28	29	30		

Dec	F	Sa	Su	M	Tu	W	Th	F	Sa	Su	M	Tu	W	Th	F	Sa	Su	M	Tu	W	Th	F	Sa	Su	M	Tu	W	Th	F	Sa	Su		
2017	1	2	3	4	5	6	7	8	9	10	11	12	13	14	15	16	17	18	19	20	21	22	23	24	25	26	27	28	29	30	31		
	-	-	-	-	-	-	-	-	-	-	-	-	-	-	-	-	-	-	-	-	-	-	-	-	-	-	-	-	-	-	-	-	

Jan	M	Tu	W	Th	F	Sa	Su	M	Tu	W	Th	F	Sa	Su	M	Tu	W	Th	F	Sa	Su	M	Tu	W	Th	F	Sa	Su	M	Tu	W		
2018	1	2	3	4	5	6	7	8	9	10	11	12	13	14	15	16	17	18	19	20	21	22	23	24	25	26	27	28	29	30	31		
	-	-	-	-	-	-	-	-	-	-	-	-	-	-	-	-	-	-	-	-	-	-	-	-	-	-	-	-	-	-	-	-	

Feb	Th	F	Sa	Su	M	Tu	W	Th	F	Sa	Su	M	Tu	W	Th	F	Sa	Su	M	Tu	W	Th	F	Sa	Su	M	Tu	W			
2018	1	2	3	4	5	6	7	8	9	10	11	12	13	14	15	16	17	18	19	20	21	22	23	24	25	26	27	28			
	-	-	-	-	-	-	-	-	-	-	-	-	-	-	-	-	-	-	-	-	-	-	-	-	-	-	-	-	-	-	-

Mar	Th	F	Sa	Su	M	Tu	W	Th	F	Sa	Su	M	Tu	W	Th	F	Sa	Su	M	Tu	W	Th	F	Sa	Su	M	Tu	W	Th	F	Sa		
2018	1	2	3	4	5	6	7	8	9	10	11	12	13	14	15	16	17	18	19	20	21	22	23	24	25	26	27	28	29	30	31		
	-	-	-	-	-	-	-	-	-	-	-	-	-	-	-	-	-	-	-	-	-	-	-	-	-	-	-	-	-	-	-	-	

Apr	Su	M	Tu	W	Th	F	Sa	Su	M	Tu	W	Th	F	Sa	Su	M	Tu	W	Th	F	Sa	Su	M	Tu	W	Th	F	Sa	Su	M		
2018	1	2	3	4	5	6	7	8	9	10	11	12	13	14	15	16	17	18	19	20	21	22	23	24	25	26	27	28	29	30		
	-	-	-	-	-	-	-	-	-	-	-	-	-	-	-	-	-	-	-	-	-	-	-	-	-	-	-	-	-	-	-	-

May	Tu	W	Th	F	Sa	Su	M	Tu	W	Th	F	Sa	Su	M	Tu	W	Th	F	Sa	Su	M	Tu	W	Th	F	Sa	Su	M	Tu	W	Th		
2018	1	2	3	4	5	6	7	8	9	10	11	12	13	14	15	16	17	18	19	20	21	22	23	24	25	26	27	28	29	30	31		
	-	-	-	-	-	-	-	-	-	-	-	-	-	-	-	-	-	-	-	-	-	-	-	-	-	-	-	-	-	-	-	-	

June	F	Sa	Su	M	Tu	W	Th	F	Sa	Su	M	Tu	W	Th	F	Sa	Su	M	Tu	W	Th	F	Sa	Su	M	Tu	W	Th	F	Sa		
2018	1	2	3	4	5	6	7	8	9	10	11	12	13	14	15	16	17	18	19	20	21	22	23	24	25	26	27	28	29	30		
	-	-	-	-	-	-	-	-	-	-	-	-	-	-	-	-	-	-	-	-	-	-	-	-	-	-	-	-	-	-	-	-

Jul	Su	M	Tu	W	Th	F	Sa	Su	M	Tu	W	Th	F	Sa	Su	M	Tu	W	Th	F	Sa	Su	M	Tu	W	Th	F	Sa	Su	M	Tu		
2018	1	2	3	4	5	6	7	8	9	10	11	12	13	14	15	16	17	18	19	20	21	22	23	24	25	26	27	28	29	30	31		
	-	-	-	-	-	-	-	-	-	-	-	-	-	-	-	-	-	-	-	-	-	-	-	-	-	-	-	-	-	-	-	-	

Aug	W	Th	F	Sa	Su	M	Tu	W	Th	F	Sa	Su	M	Tu	W	Th	F	Sa	Su	M	Tu	W	Th	F	Sa	Su	M	Tu	W	Th	F		
2018	1	2	3	4	5	6	7	8	9	10	11	12	13	14	15	16	17	18	19	20	21	22	23	24	25	26	27	28	29	30	31		
	-	-	-	-	-	-	-	-	-	-	-	-	-	-	-	-	-	-	-	-	-	-	-	-	-	-	-	-	-	-	-	-	



Luxury vacation rental
Ferreira do Zêzere - Portugal
"Moradia House Villa"

10
[Book now](#)





Availability calendar - from : august 2018

Sep	Sa	Su	M	Tu	W	Th	F	Sa	Su	M	Tu	W	Th	F	Sa	Su	M	Tu	W	Th	F	Sa	Su	M	Tu	W	Th	F	Sa	Su
2018	1	2	3	4	5	6	7	8	9	10	11	12	13	14	15	16	17	18	19	20	21	22	23	24	25	26	27	28	29	30
-	-	-	-	-	-	-	-	-	-	-	-	-	-	-	-	-	-	-	-	-	-	-	-	-	-	-	-	-	-	-

Oct	M	Tu	W	Th	F	Sa	Su	M	Tu	W	Th	F	Sa	Su	M	Tu	W	Th	F	Sa	Su	M	Tu	W	Th	F	Sa	Su	M	Tu	W
2018	1	2	3	4	5	6	7	8	9	10	11	12	13	14	15	16	17	18	19	20	21	22	23	24	25	26	27	28	29	30	31
-	-	-	-	-	-	-	-	-	-	-	-	-	-	-	-	-	-	-	-	-	-	-	-	-	-	-	-	-	-	-	-

[Month : Next >>](#)

Rental rates - Luxury House - from 1 to 10 Person(s)

Rates	Night	Weekend	week	2 weeks	Month
 Low season	\$117* > 2	\$352*	\$821*	-	-
 Mid season	\$176*	\$411*	\$1173*	\$2111*	-
 High season	\$293*	\$586*	\$1701*	\$2932*	-
 Festive specials	-	-	\$1877*	-	-
 Promotional period	\$141* > 4	\$411*	\$1173*	-	-

> Minimum Night

[Book now](#)



interior



Guest facilities



toilets



full bed(s)

Booking conditions

• Reservation

- Payment made upon reservation : 50% of rental sum
- Payment balance : on handing over the keys
- Deposit required

• rentals

- Service charges included
- Day tax included
- Cleaning charge levy on departure : \$59*
- Anticipated supplement for :
 - supplementary bed(s)
 - firewood

Accepted methods of payment

- Bank transfer (wire) • Cash

[▶ Book now](#)

[▶ Contact the owner](#)

Contact directly the property owners

www.iha.com
Advert No.
20638
[>> Book now <<](#)

Contact

Spoken languages



* Converted at the rate indicated : €100 = \$117.29 = £89.59

Advert No. 20638

www.iha.com

