

Luxury vacation rental Eifel Ahr "Eifelhaus24"

Vacation as if you were alone! With sauna, Jacuzzi, fireplace, infrared cabin, solarium, all year round – in winter, too - heated outdoor Jacuzzi, lots of nature, partially with table soccer and darts, barbecue - holiday at special places!



Luxury Apartment - Flat first floor, shared entrance, in(on) a(an) Charming Typical House single storey

Setting : exclusive, romantic

Capacity : from 1 to 2 person(s)

Bedroom(s) : 1

Room(s) : 1



Gay friendly ()

Theme breaks
Nature discovery
Dolce Vita
Vacations with Dog
Relaxation
Romantic break
Valentine's Day

Orlenbach - Trier Region - Rhineland Palatinate

Germany

Reservation : +49 (0) 178 1326520 (Germany)

Advert No. 41156

www.iha.com



Luxury vacation rental



Luxury Apartment - Flat first floor, shared entrance, in(on) a(an) Charming Typical House single storey

- **Ideal for couples, honeymoon**
- **View :** mountain, country side, farmland, forest, village, nightlights
- **Setting :** exclusive, romantic
- **Exposure :** South

" Thick walls guarantee privacy, so that you can use the Jacuzzi or the sauna or the outdoor heated swimming pool around the clock - even at night. "

Assets

- **Parking :**
Parking uncovered : 4 off road.
- **Advantages :**
Sauna, jacuzzi, massage table, tanning bed
- **baby equipment :**
High chair



Single family home

Surroundings & location



Countryside

" In a picturesque environment. Here you can hike, watch stars, go fishing, golfing, horseback riding, explore caves etc. Not far away is a quad ground in a lava pit (very much recommended), you can learn to drive an excavator, there's a Zipline, zoos too or you can simply enjoy nature. The region with its volcanic landscape offers a variety of entertainment through its maars and caves. "

Leisure

- **Leisure activities less than 12 miles :**
Cross-country skiing, ski-trekking, luge (run), golf, tennis, pathway/broadwalk, hiking, Microlights, horse trekking, ATV/Quad Bike
- **Attractions and relaxation :**
Bar/pub, restaurant, movie theater, zoo/ animal park, historical site, museum, theater, festivals, sauna, fitness center

Surroundings

- **Amenities :**
Village center 3mi.
Household linens for hire/laundry services 4.5mi.
Breadstore 3mi.
Local stores 4.5mi.
Supermarket 4.5mi.
Hairdressing salon 3mi.
Mail office 4.5mi.
Bank 3mi.
ATM 3mi.
Drugstore 4.5mi.
Doctor 4.5mi.
Hospital 6mi.
Dispensary 4.5mi.



cosy nook



sleeping area



living room

Interior

- **Receive up to :**
from 1 to 2 person(s) (2 adults)
- **Liveable floor area :**
530 Sq.ft.
- **Interior layout :**
1 Room(s), 1 bedroom(s), sleeping den, 1 bathroom, 1 toilets, living room 160 Sq.ft., separate kitchen, dining area, cosy nook, walk-in closet
- **Sleeps - bed(s) :**
1 full bed(s), 1 baby cradle
- **Guest facilities :**
Fireplace, T.V., hi-fi system, DVD player, board games, book collection, movie collection, cable/satelite, internet access, wifi, wardrobe, cupboard, Hanging wardrobe, safe deposit box, hair dryer, heated towel rail, power shower, fly screens, central heating, electric heating, wood-burning stove, Drapes, Double glazed, electric shutters, digipad entry system, fire alarm
- **Appliances :**
Crockery/flatware, kitchen utensils, electric coffee maker, electric espresso coffee maker, electric kettle, toaster, juicer, electric stove, electric hobs, oven, micro-wave oven, extractor hood, refridgerator, deep freeze, ice maker, dish washer, washing machine, clothes dryer, vacuum cleaner, iron, ironing board

Exterior

- **Ground surface :**
0.75 acre
- **Outside accommodation :**
Terrace 700 Sq.ft., sundeck 1,300 Sq.ft., sunhouse 100 Sq.ft.
- **Outside setting :**
Enclosed grounds, yard, lawn
- **Outside amenities :**
BBQ, yard table(s), 4 yard seat(s), parasol, 2 sun recliner(s)



cosy nook

Services

- **washing :**
Sheets, Towels, Comforter(s), Comforter(s), Pillows
- **Single family home :**
Cleaning on departure, Snow clearance, Parking
- **Restauration :**
Breakfast supplement (+\$16*)

For your guidance

- **For your guidance**
Kids welcome
Pets friendly
Non smoking rental, cell phone network coverage, personal transport advisable
Water : hot/cold
Local voltage supply : 220-240V / 50Hz
Electricity supply : shared generator



Kitchen Area

Photo album - 1



Single family home



sleeping area



cosy nook



living room



Kitchen Area

Photo album - 2



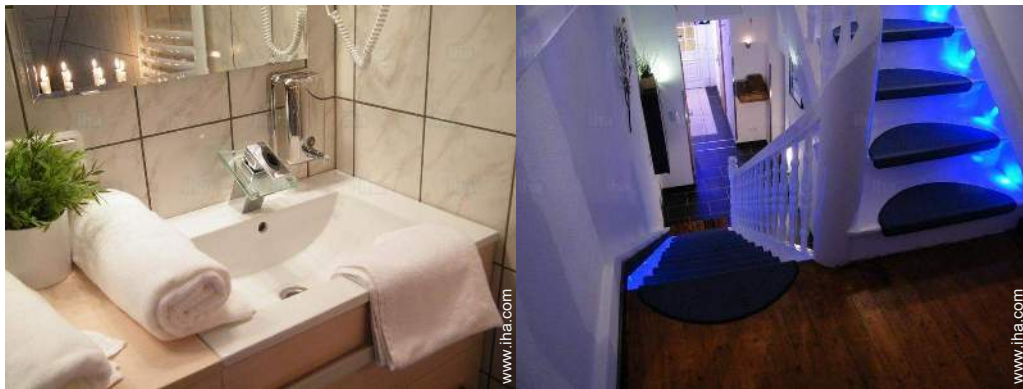
cosy nook

bathroom



bathroom

bathroom



bathroom



leisure equipment

Photo album - 3



tanning bed



sauna



sauna



sauna



sauna



sauna

Theme breaks

Nature discovery

Dolce Vita

Vacations with Dog

From \$5 for 2 person(s)

All year

Relaxation

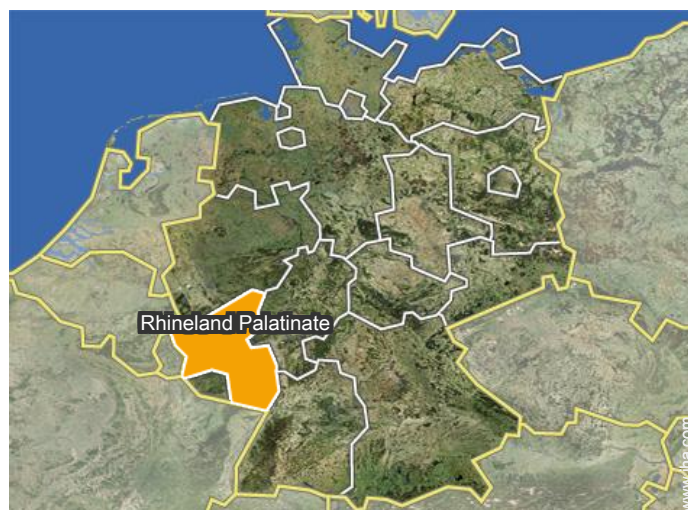
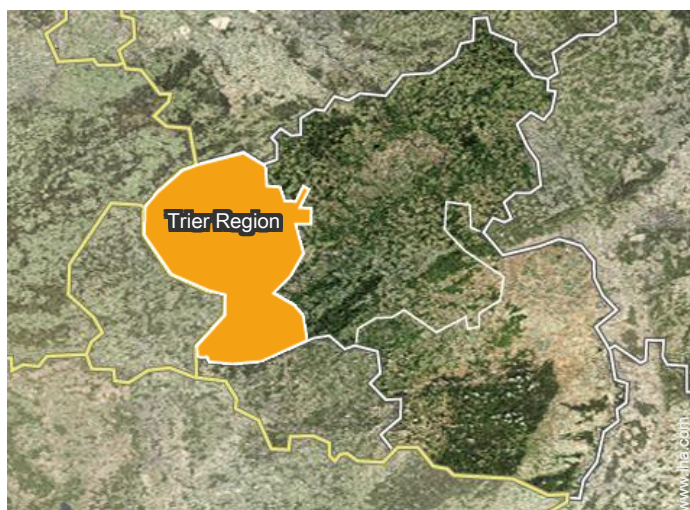
Romantic break

Valentine's Day

Included in the price of the
accommodation


All year

Location



Location & Access

" Address will be announced only on request. "

 GPS coordinates in degrees, minutes, seconds: Latitude 50°9'14"N - Longitude 6° 22'54"E (Dwelling)

Address

→ Ortsstraße 2
54595 Orlenbach

• Freeway (exit) A1

→ Blankenheim, Cologne Region, North
Rhine Westphalia, Germany

→ Distance : 28mi.

→ Time : 40'

• Prüm : (4.5mi.)

Contact

Spoken
languages



Luxury vacation rental
Trier Region - Rhineland Palatinate
"Eifelhaus24"

[Book now](#)

Availability calendar - from : may 2017

May	M	Tu	W	Th	F	Sa	Su	M	Tu	W	Th	F	Sa	Su	M	Tu	W	Th	F	Sa	Su	M	Tu	W	Th	F	Sa	Su	M	Tu	W	
2017	1	2	3	4	5	6	7	8	9	10	11	12	13	14	15	16	17	18	19	20	21	22	23	24	25	26	27	28	29	30	31	

June	Th	F	Sa	Su	M	Tu	W	Th	F	Sa	Su	M	Tu	W	Th	F	Sa	Su	M	Tu	W	Th	F	Sa	Su	M	Tu	W	Th	F	
2017	1	2	3	4	5	6	7	8	9	10	11	12	13	14	15	16	17	18	19	20	21	22	23	24	25	26	27	28	29	30	
	-	-	-	-	-	-	-	-	-	-	-	-	-	-	-	-	-	-	-	-	-	-	-	-	-	-	-	-	-	-	-

Jul	Sa	Su	M	Tu	W	Th	F	Sa	Su	M	Tu	W	Th	F	Sa	Su	M	Tu	W	Th	F	Sa	Su	M	Tu	W	Th	F	Sa	Su	M
2017	1	2	3	4	5	6	7	8	9	10	11	12	13	14	15	16	17	18	19	20	21	22	23	24	25	26	27	28	29	30	31
	-	-	-	-	-	-	-	-	-	-	-	-	-	-	-	-	-	-	-	-	-	-	-	-	-	-	-	-	-	-	-

Aug	Tu	W	Th	F	Sa	Su	M	Tu	W	Th	F	Sa	Su	M	Tu	W	Th	F	Sa	Su	M	Tu	W	Th	F	Sa	Su	M	Tu	W	Th
2017	1	2	3	4	5	6	7	8	9	10	11	12	13	14	15	16	17	18	19	20	21	22	23	24	25	26	27	28	29	30	31
	-	-	-	-	-	-	-	-	-	-	-	-	-	-	-	-	-	-	-	-	-	-	-	-	-	-	-	-	-	-	-

Sep	F	Sa	Su	M	Tu	W	Th	F	Sa	Su	M	Tu	W	Th	F	Sa	Su	M	Tu	W	Th	F	Sa	Su	M	Tu	W	Th	F	Sa
2017	1	2	3	4	5	6	7	8	9	10	11	12	13	14	15	16	17	18	19	20	21	22	23	24	25	26	27	28	29	30
	-	-	-	-	-	-	-	-	-	-	-	-	-	-	-	-	-	-	-	-	-	-	-	-	-	-	-	-	-	-

Oct	Su	M	Tu	W	Th	F	Sa	Su	M	Tu	W	Th	F	Sa	Su	M	Tu	W	Th	F	Sa	Su	M	Tu	W	Th	F	Sa	Su	M	Tu
2017	1	2	3	4	5	6	7	8	9	10	11	12	13	14	15	16	17	18	19	20	21	22	23	24	25	26	27	28	29	30	31
	-	-	-	-	-	-	-	-	-	-	-	-	-	-	-	-	-	-	-	-	-	-	-	-	-	-	-	-	-	-	-

Nov	W	Th	F	Sa	Su	M	Tu	W	Th	F	Sa	Su	M	Tu	W	Th	F	Sa	Su	M	Tu	W	Th	F	Sa	Su	M	Tu	W	Th
2017	1	2	3	4	5	6	7	8	9	10	11	12	13	14	15	16	17	18	19	20	21	22	23	24	25	26	27	28	29	30
	-	-	-	-	-	-	-	-	-	-	-	-	-	-	-	-	-	-	-	-	-	-	-	-	-	-	-	-	-	-

Dec	F	Sa	Su	M	Tu	W	Th	F	Sa	Su	M	Tu	W	Th	F	Sa	Su	M	Tu	W	Th	F	Sa	Su	M	Tu	W	Th	F	Sa	Su
2017	1	2	3	4	5	6	7	8	9	10	11	12	13	14	15	16	17	18	19	20	21	22	23	24	25	26	27	28	29	30	31
	-	-	-	-	-	-	-	-	-	-	-	-	-	-	-	-	-	-	-	-	-	-	-	-	-	-	-	-	-	-	-

Jan	M	Tu	W	Th	F	Sa	Su	M	Tu	W	Th	F	Sa	Su	M	Tu	W	Th	F	Sa	Su	M	Tu	W	Th	F	Sa	Su	M	Tu	W
2018	1	2	3	4	5	6	7	8	9	10	11	12	13	14	15	16	17	18	19	20	21	22	23	24	25	26	27	28	29	30	31
	-	-	-	-	-	-	-	-	-	-	-	-	-	-	-	-	-	-	-	-	-	-	-	-	-	-	-	-	-	-	-

Feb	Th	F	Sa	Su	M	Tu	W	Th	F	Sa	Su	M	Tu	W	Th	F	Sa	Su	M	Tu	W	Th	F	Sa	Su	M	Tu	W	
2018	1	2	3	4	5	6	7	8	9	10	11	12	13	14	15	16	17	18	19	20	21	22	23	24	25	26	27	28	
	-	-	-	-	-	-	-	-	-	-	-	-	-	-	-	-	-	-	-	-	-	-	-	-	-	-	-	-	-



Luxury vacation rental
Orlenbach - Germany
"Eifelhaus24"

10
[Book now](#)


Availability calendar - from : february 2018

Mar	Th	F	Sa	Su	M	Tu	W	Th	F	Sa	Su	M	Tu	W	Th	F	Sa	Su	M	Tu	W	Th	F	Sa	Su	M	Tu	W	Th	F	Sa
2018	1	2	3	4	5	6	7	8	9	10	11	12	13	14	15	16	17	18	19	20	21	22	23	24	25	26	27	28	29	30	31
-	-	-	-	-	-	-	-	-	-	-	-	-	-	-	-	-	-	-	-	-	-	-	-	-	-	-	-	-	-	-	

Apr	Su	M	Tu	W	Th	F	Sa	Su	M	Tu	W	Th	F	Sa	Su	M	Tu	W	Th	F	Sa	Su	M	Tu	W	Th	F	Sa	Su	M
2018	1	2	3	4	5	6	7	8	9	10	11	12	13	14	15	16	17	18	19	20	21	22	23	24	25	26	27	28	29	30
-	-	-	-	-	-	-	-	-	-	-	-	-	-	-	-	-	-	-	-	-	-	-	-	-	-	-	-	-	-	-

[Month : Next >>](#)

Rental rates - Luxury Apartment - Flat - from 1 to 2 Person(s)

Rates	Night	Weekend	week	2 weeks	Month
 High season	\$97* > 2	\$119*	\$651*	\$1305*	\$2610*
> Minimum Night					

[Book now](#)

Booking conditions

• Reservation

- Payment made upon reservation : \$109*
- Payment balance :
- 3 weeks before the stay
- Deposit required : \$109*

• rentals

- Service charges to be added
- Day tax included
- Cleaning charge on departure included
- Anticipated supplement for :
 - animals
 - supplementary bed(s)
 - tanning bed
 - firewood

Accepted methods of payment

- Bank transfer (wire) • Cash

[▶ Book now](#)

[▶ Contact the owner](#)

Contact directly the property owners

www.iha.com
Advert No.
41156
[>> Book now <<](#)

Contact

Spoken languages



* Converted at the rate indicated : €100 = \$108.73 = £83.95

Advert No. 41156

www.iha.com

