

Luxury vacation rental Port Vila "Villa Anouska"



Luxury Villa, detached, single storey, separate entrance, in(on) a(an) Private property

Setting : waterfront, peaceful

Capacity : from 1 to 8 person(s)

Bedroom(s) : 4

Room(s) : 1

Port Vila - Efate - Shefa

Vanuatu

Advert No. 36126

Reservation : +678 (2) 6108 (Vanuatu)

www.ihacom.com



Luxury vacation rental



Luxury Villa, detached, single storey, separate entrance, in(on) a(an) Private property

- **Ideal for all age groups, family**
- **View :** unobscured, not overlooked, sea/ocean, country side, swimming pool, garden/park
- **Setting :** waterfront, peaceful
- **Exposure :** South-east

Assets

- **Swimming pool :**
Private swimming pool, rectangular (length 46', width 13'), steps in, outside shower, pool house (open from 'january 01' till 'december 31')
- **Parking :**
Parking uncovered : 2 internal.

Benefits :
Direct access to the beach, private beach, helicopter landing pad



Surroundings & location



Leisure

- **Leisure activities less than 12 miles :**
Bathing, snorkelling, scuba diving, water skiing, jet ski, surfing, windsurfing, sailing, canoeing, golf, riding school, parascending, boat trips, horse trekking, fishing, deep-sea fishing, spear fishing
- **Supervised :**
Dive school, tennis school, riding school
- **Attractions and relaxation :**
Bar/pub, discotheque, restaurant, park and garden, nature reserve, art gallery, museum, local craftstore, casino, beauticians, fitness center

Surroundings

- **Locality :**
Sea/ocean 165'
Sandy beach <165'
Rocky beach <165'
- **Amenities :**
Kindergarten 12.5mi.
Downtown 12.5mi.
Bus stop / bus station 4.5mi.
Car rental 12.5mi.
Scuba diving material hire 12.5mi.
Breadstore 12.5mi.
Caterer
Local stores 9mi.
Supermarket 9mi.
Hairdressing salon 12.5mi.
Internet cafe 12.5mi.
Mail office 12.5mi.
Bank 12.5mi.
ATM 9mi.
Drugstore 12.5mi.
Doctor 9mi.
Hospital 12.5mi.



Luxury vacation rental
Port Vila - Vanuatu
"Villa Anouska"

3

[Book now](#)



Luxury Villa

Exterior

- **Ground surface :**
1.25 acre
- **Outside accommodation :**
Terrace 650 Sq.ft., covered terrace 1,076 Sq. ft.
- **Outside setting :**
Enclosed grounds 0.75 acre, tropical garden > 0.25 acre, natural pools
- **Outside amenities :**
Summer living area, BBQ, gaz BBQ, yard table(s), yard seat(s), parasol, yard seated area, chaise(s) longue(s), 4 sun recliner(s), 2 hammock(s), sand box, outside shower facilities



Services

- **washing :**
Sheets, Towels, Linen, Beach towels, Comforter(s), Comforter(s), Pillows
- **Single family home :**
Cleaning, Yard/swimming pool maintenance, Parking, Airport transfers supplement (+ \$86*)
- **Personnel :**
Staff, Laundry supplement, Baby sitting supplement

Interior

- **Receive up to :**
from 1 to 8 person(s) (8 adults)
- **Liveable floor area :**
6,500 Sq.ft.
- **Interior layout :**
1 Room(s), 4 bedroom(s), 4 shower room, 5 toilets, living room 1,300 Sq.ft., american style kitchen, dining area, bar area, pantry, patio, veranda
- **Sleeps - bed(s) :**
4 queen-size bed(s), 1 guest folding bed(s)
1 pers, 1 baby cradle
- **Guest facilities :**
T.V., hi-fi system, vcr, DVD player, board games, book collection, phone, cable/satelite, wifi, wardrobe, cupboard, Hanging wardrobe, radio alarmclock, hair dryer, mosquito nets, partly air-conditioned, ceiling paddle fan, entry phone system
- **Appliances :**
Crockery/flatware, kitchen utensils, cafetiere, electric espresso coffee maker, electric kettle, toaster, juicer, food processor, meat broiler, gaz stove, oven, micro-wave oven, refridgerator, deep freeze, dish washer, vacuum cleaner, iron, ironing board

For your guidance

- **For your guidance**
Kids welcome
No pet allowed
Non smoking rental, cell phone network coverage, personal transport advisable
Water : hot/cold
Local voltage supply : 220-240V / 50Hz
Electricity supply : mains and back-up generator



Interior layout

Advert No. 36126

www.iha.com



>> VACATION HOMES

DIRECT BY OWNERS

Photo album - 1



Luxury Villa



Interior layout

Photo album - 2



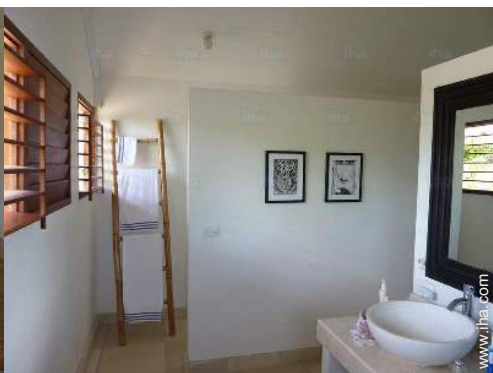
Outside accommodation



living room



bedroom



Route map



Location & Access



GPS coordinates in degrees, minutes, seconds: Latitude 17° 49'30"S - Longitude 168°23'26"E ([Dwelling](#))

Address

→ 64, Narpow Point
P.O. Box 244

• Airport Bauerfield

→ Port Vila, Efate, Shefa, Vanuatu
→ Distance : 15.5mi.
→ Time : 30'

• Sea port Port Vila

→ Port Vila, Efate, Shefa, Vanuatu
→ Distance : 10,5mi.
→ Time : 20'

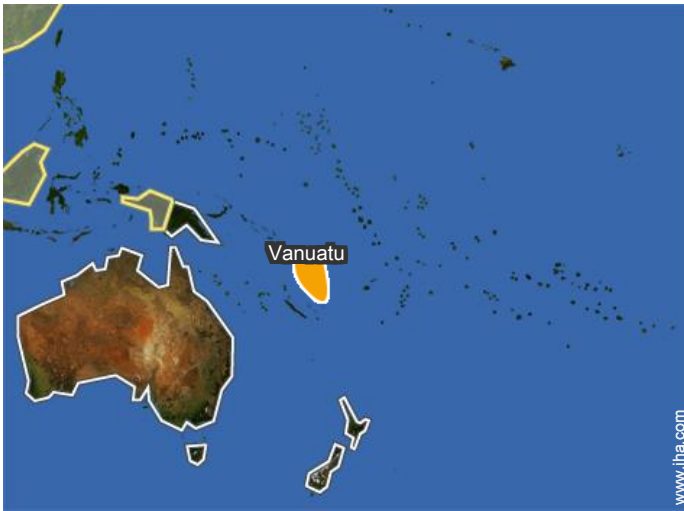
• Port Vila : (10,5mi.)

Contact

Spoken
languages



Location



Luxury vacation rental
 Efate - Shefa
"Villa Anouska"

[Book now](#)

Availability calendar - from : february 2018

Feb	Th	F	Sa	Su	M	Tu	W	Th	F	Sa	Su	M	Tu	W	Th	F	Sa	Su	M	Tu	W	Th	F	Sa	Su	M	Tu	W
2018	1	2	3	4	5	6	7	8	9	10	11	12	13	14	15	16	17	18	19	20	21	22	23	24	25	26	27	28
																			-	-	-	-	-	-	-	-	-	

Mar	Th	F	Sa	Su	M	Tu	W	Th	F	Sa	Su	M	Tu	W	Th	F	Sa	Su	M	Tu	W	Th	F	Sa	Su	M	Tu	W	Th	F	Sa
2018	1	2	3	4	5	6	7	8	9	10	11	12	13	14	15	16	17	18	19	20	21	22	23	24	25	26	27	28	29	30	31
	-	-	-	-	-	-	-	-	-	-	-	-	-	-	-	-	-	-	-	-	-	-	-	-	-	-	-	-	-	-	

Apr	Su	M	Tu	W	Th	F	Sa	Su	M	Tu	W	Th	F	Sa	Su	M	Tu	W	Th	F	Sa	Su	M	Tu	W	Th	F	Sa	Su	M
2018	1	2	3	4	5	6	7	8	9	10	11	12	13	14	15	16	17	18	19	20	21	22	23	24	25	26	27	28	29	30
	-	-	-	-	-	-	-	-	-	-	-	-	-	-	-	-	-	-	-	-	-	-	-	-	-	-	-	-	-	

May	Tu	W	Th	F	Sa	Su	M	Tu	W	Th	F	Sa	Su	M	Tu	W	Th	F	Sa	Su	M	Tu	W	Th	F	Sa	Su	M	Tu	W	Th
2018	1	2	3	4	5	6	7	8	9	10	11	12	13	14	15	16	17	18	19	20	21	22	23	24	25	26	27	28	29	30	31
	-	-	-	-	-	-	-	-	-	-	-	-	-	-	-	-	-	-	-	-	-	-	-	-	-	-	-	-	-	-	

June	F	Sa	Su	M	Tu	W	Th	F	Sa	Su	M	Tu	W	Th	F	Sa	Su	M	Tu	W	Th	F	Sa							
2018	1	2	3	4	5	6	7	8	9	10	11	12	13	14	15	16	17	18	19	20	21	22	23	24	25	26	27	28	29	30
	-	-	-	-	-	-	-	-	-	-	-	-	-	-	-	-	-	-	-	-	-	-	-	-	-	-	-	-	-	

Jul	Su	M	Tu	W	Th	F	Sa	Su	M	Tu	W	Th	F	Sa	Su	M	Tu	W	Th	F	Sa	Su	M	Tu	W	Th	F	Sa	Su	M	Tu
2018	1	2	3	4	5	6	7	8	9	10	11	12	13	14	15	16	17	18	19	20	21	22	23	24	25	26	27	28	29	30	31
	-	-	-	-	-	-	-	-	-	-	-	-	-	-	-	-	-	-	-	-	-	-	-	-	-	-	-	-	-	-	

Aug	W	Th	F	Sa	Su	M	Tu	W	Th	F	Sa	Su	M	Tu	W	Th	F	Sa	Su	M	Tu	W	Th	F	Sa	Su	M	Tu	W	Th	F
2018	1	2	3	4	5	6	7	8	9	10	11	12	13	14	15	16	17	18	19	20	21	22	23	24	25	26	27	28	29	30	31
	-	-	-	-	-	-	-	-	-	-	-	-	-	-	-	-	-	-	-	-	-	-	-	-	-	-	-	-	-	-	

Sep	Sa	Su	M	Tu	W	Th	F	Sa	Su	M	Tu	W	Th	F	Sa	Su	M	Tu	W	Th	F	Sa	Su							
2018	1	2	3	4	5	6	7	8	9	10	11	12	13	14	15	16	17	18	19	20	21	22	23	24	25	26	27	28	29	30
	-	-	-	-	-	-	-	-	-	-	-	-	-	-	-	-	-	-	-	-	-	-	-	-	-	-	-	-	-	

Oct	M	Tu	W	Th	F	Sa	Su	M	Tu	W	Th	F	Sa	Su	M	Tu	W	Th	F	Sa	Su	M	Tu	W	Th	F	Sa	Su	M	Tu	W
2018	1	2	3	4	5	6	7	8	9	10	11	12	13	14	15	16	17	18	19	20	21	22	23	24	25	26	27	28	29	30	31
	-	-	-	-	-	-	-	-	-	-	-	-	-	-	-	-	-	-	-	-	-	-	-	-	-	-	-	-	-	-	

Nov	Th	F	Sa	Su	M	Tu	W	Th	F	Sa	Su	M	Tu	W	Th	F	Sa	Su	M	Tu	W	Th	F							
2018	1	2	3	4	5	6	7	8	9	10	11	12	13	14	15	16	17	18	19	20	21	22	23	24	25	26	27	28	29	30
	-	-	-	-	-	-	-	-	-	-	-	-	-	-	-	-	-	-	-	-	-	-	-	-	-	-	-	-	-	



Luxury vacation rental
Port Vila - Vanuatu
"Villa Anouska"

9

[Book now](#)

Availability calendar - from : november 2018

Dec	Sa	Su	M	Tu	W	Th	F	Sa	Su	M	Tu	W	Th	F	Sa	Su	M	Tu	W	Th	F	Sa	Su	M							
2018	1	2	3	4	5	6	7	8	9	10	11	12	13	14	15	16	17	18	19	20	21	22	23	24	25	26	27	28	29	30	31

Jan	Tu	W	Th	F	Sa	Su	M	Tu	W	Th	F	Sa	Su	M	Tu	W	Th	F	Sa	Su	M	Tu	W	Th							
2019	1	2	3	4	5	6	7	8	9	10	11	12	13	14	15	16	17	18	19	20	21	22	23	24	25	26	27	28	29	30	31

[Month : Next >>](#)

Rental rates - Luxury Villa - from 1 to 8 Person(s)

Rates	Night	Weekend	week	2 weeks	Month
■ Low season	\$926* > 3	-	-	-	-
■ High season	\$988* > 3	-	-	-	-

> Minimum Night

[Book now](#)

Booking conditions

• Reservation

- Payment made upon reservation : 25% of rental sum
- Payment balance : 1 month before the stay
- Deposit required : \$617*

Accepted methods of payment

- Visa/Delta/Electron
- Bank transfer (wire)
- MasterCard/EuroCard
- American Express
- PayPal
- Cash

[▶ Book now](#)

[▶ Contact the owner](#)

Contact directly the property owners

www.iha.com
Advert No.
36126
[>> Book now <<](#)

Contact

Spoken languages



* Converted at the rate indicated : €100 = \$123.46 = £88.94

Advert No. 36126

www.iha.com



[>> VACATION HOMES](#)

DIRECT BY OWNERS