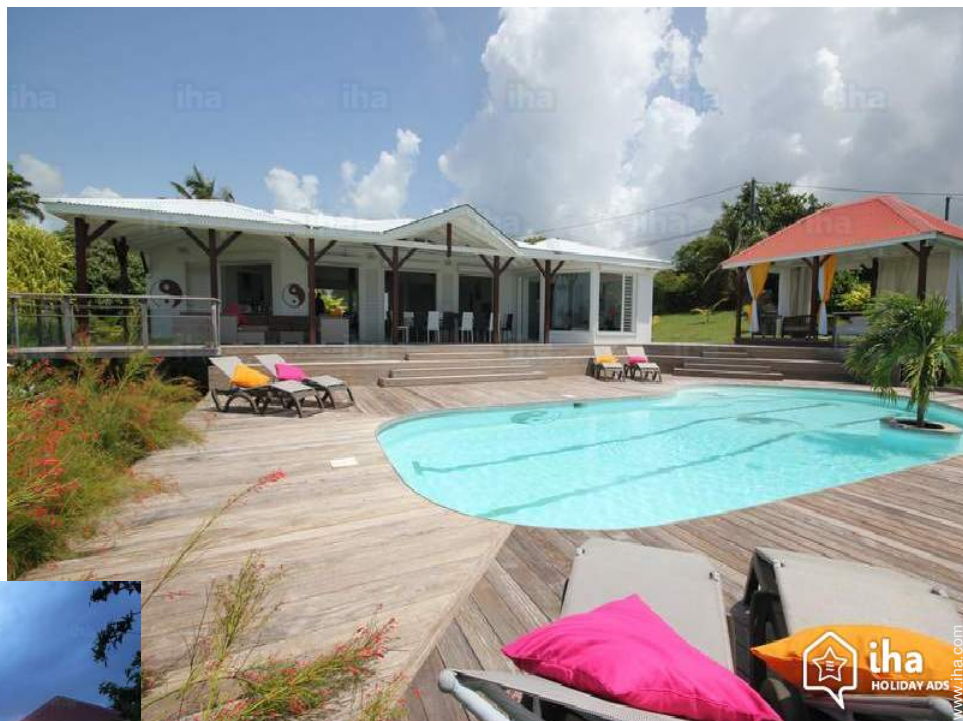


Luxury vacation rental Sainte Anne "Villa Yin & Yang"



Luxury Villa, detached, single storey, separate entrance, in(on) a(an) Private estate

Setting : luxurious, heavenly

Capacity : from 2 to 12 person(s)

Bedroom(s) : 4

Room(s) : 7

Sainte Anne - Grande Terre

Guadeloupe

Reservation : +590 (0) 590 90 01 90 (Guadeloupe)

Advert No. 54001

www.iha.com



Luxury vacation rental



Luxury Villa, detached, single storey, separate entrance, in(on) a(an) Private estate

- **Ideal for family groups, all age groups**
- **View** : panoramic, not overlooked, dominant, sea/ocean, swimming pool, garden/park
- **Setting** : luxurious, heavenly
- **Exposure** : South

Assets

- **Swimming pool** :
Private swimming pool, unusual (length 40', width 18'), illuminated, steps in, outside shower
- **Parking** :
Parking uncovered : 6 reserved stall, 6 off road.
- **baby equipment** :
High chair, stroller



overall view

Surroundings & location



Ocean



Fishing



Culture

Leisure

- **Leisure activities less than 12 miles :**

Bathing, snorkelling, scuba diving, Scuba diving (Standard diving dress), banana boat, water skiing, jet ski, surfing, windsurfing, sailing, kite surfing, canoeing, golf, hiking, boat trips, fishing, deep-sea fishing, fishing, spear fishing

- **Supervised :**

Sailing school, dive school

Surroundings

- **Locality :**

Sea/ocean 165'
Sandy beach 330'
Nudist beach 12.5mi.
18 hole golf course
Flying clubs 12.5mi.
Windsurfing spots 1.25mi.
Surfing spots 0.93mi.
Watersports centre
River rapids 25mi.
Waterfall 25mi.
Cliff 165'
River 25mi.
Forest 25mi.
Mountain range 25mi.
Marina 9mi.



view over the sea



view from the terrace



view from the covered terrace

Exterior

- **Ground surface :**
0.5 acre
- **Outside accommodation :**
Terrace 1,300 Sq.ft., covered terrace 650 Sq. ft., sundeck, pergola 215 Sq.ft.
- **Outside setting :**
Enclosed grounds 0.5 acre, yard, landscaped yard > 0.25 acre, tropical garden > 0.25 acre, lawn > 0.25 acre
- **Outside amenities :**
Summer living area, gaz BBQ, parasol, yard seated area, 6 sun recliner(s), outside shower facilities



covered terrace

Interior

- **Receive up to :**
from 2 to 12 person(s)
- **Liveable floor area :**
3,300 Sq.ft.
- **Interior layout :**
7 Room(s), 4 bedroom(s), bathroom, 3 shower room, 4 toilets, living room 860 Sq. ft., large american style kitchen, laundry room
- **Sleeps - bed(s) :**
2 queen-size bed(s), 1 king-size bed(s), 6 twin bed(s), 2 baby cradle
- **Guest facilities :**
T.V., digital home cinema, hi-fi system, DVD player, phone, fax, cable/satelite, high speed internet access, wifi, cupboard, Hanging wardrobe, safe deposit box, hair dryer, fully air-conditioned, Glazed in area, Double glazed, Rolling shutters, electric shutters, entry phone system, digipad entry system, intruder alarm, digipad entry gates
- **Appliances :**
Crockery/flatware, kitchen utensils, cafetiere, electric coffee maker, electric espresso coffee maker, electric kettle, toaster, juicer, food processor, meat broiler, electric stove, electric hobs, oven, mini-oven, micro-wave oven, extractor hood, refridgerator, deep freeze, ice maker, dish washer, washing machine, clothes dryer, vacuum cleaner, iron, ironing board

Services

- **washing :**
Sheets (1 X / per week), Towels (1 X / per week), Linen (1 X / per week), Beach towels, Comforter(s), Pillows
- **Single family home :**
Yard/swimming pool maintenance (1 X / per week)
- **Personnel :**
Staff supplement, Chef(s) supplement, Chauffeur supplement, Laundry supplement, Baby sitting supplement, Beauty treatments supplement, Massage supplement
- **Restauration :**
Locally produced meals supplement

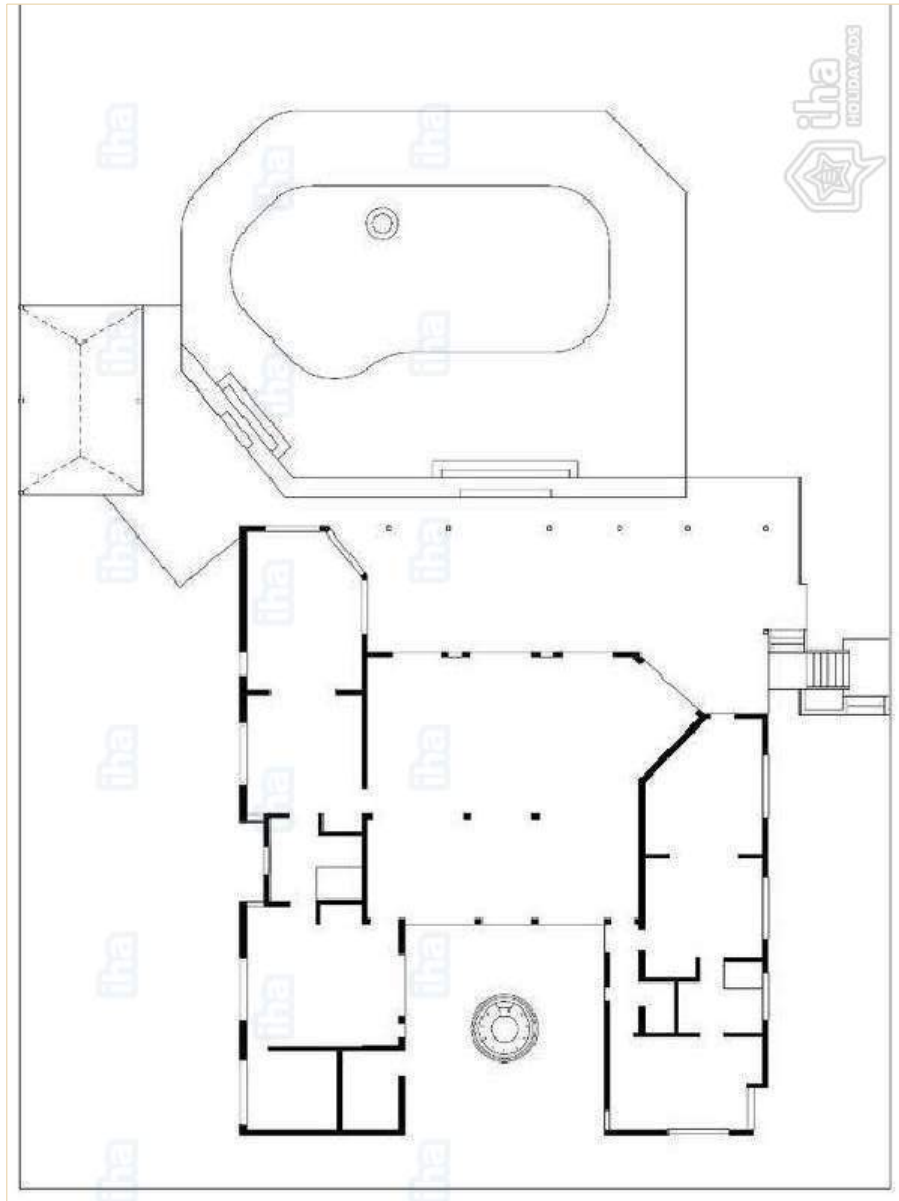
For your guidance

- **For your guidance**
Kids welcome
Pets accepted under certain conditions (ask the owner)
Cell phone network coverage
Water : hot/cold
Local voltage supply : 220-240V / 50Hz



covered terrace

Floor plan



www.ih.com

Photo album - 1



overall view



view from the terrace



view over the sea



view from the covered terrace



covered terrace

Photo album - 2



covered terrace



covered terrace



covered terrace



view from the living room



Outside setting



large american style kitchen



Interior layout and facilities



suite



bedroom

Photo album - 3



suite



bedroom



bathroom



bathroom



bathroom



Assets



Luxury Villa



direct access to the beach



direct access to the beach



bathing

Location



Location & Access



GPS coordinates in degrees, minutes, seconds: Latitude 16°13'8"N - Longitude 61°24'9"W ([Dwelling](#))

Address

→ 12 lotissement Bauhinia - Durivage
97180 Sainte Anne

• Airport Guadeloupe Pôle Caraïbes

→ Pointe à Pitre, Grande Terre,
Guadeloupe

→ Distance : 13mi.

→ Time : 30'

- Sainte Anne : (0.62mi.)
- Saint François : (8.7mi.)
- Pointe à Pitre : (10mi.)

Contact

Spoken
languages



Luxury vacation rental
 Sainte Anne - Guadeloupe
"Villa Yin & Yang"

[Book now](#)

Availability calendar - from : december 2018

Dec	Sa	Su	M	Tu	W	Th	F	Sa	Su	M	Tu	W	Th	F	Sa	Su	M	Tu	W	Th	F	Sa	Su	M							
2018	1	2	3	4	5	6	7	8	9	10	11	12	13	14	15	16	17	18	19	20	21	22	23	24	25	26	27	28	29	30	31

Jan	Tu	W	Th	F	Sa	Su	M	Tu	W	Th	F	Sa	Su	M	Tu	W	Th	F	Sa	Su	M	Tu	W	Th	F	Sa	Su	M	Tu	W	Th
2019	1	2	3	4	5	6	7	8	9	10	11	12	13	14	15	16	17	18	19	20	21	22	23	24	25	26	27	28	29	30	31
	-	-	-	-	-	-	-	-	-	-	-	-	-	-	-	-	-	-	-	-	-	-	-	-	-	-	-	-	-	-	

Feb	F	Sa	Su	M	Tu	W	Th	F	Sa	Su	M	Tu	W	Th	F	Sa	Su	M	Tu	W	Th							
2019	1	2	3	4	5	6	7	8	9	10	11	12	13	14	15	16	17	18	19	20	21	22	23	24	25	26	27	28
	-	-	-	-	-	-	-	-	-	-	-	-	-	-	-	-	-	-	-	-	-	-	-	-	-	-	-	-

Mar	F	Sa	Su	M	Tu	W	Th	F	Sa	Su	M	Tu	W	Th	F	Sa	Su	M	Tu	W	Th	F	Sa	Su							
2019	1	2	3	4	5	6	7	8	9	10	11	12	13	14	15	16	17	18	19	20	21	22	23	24	25	26	27	28	29	30	31
	-	-	-	-	-	-	-	-	-	-	-	-	-	-	-	-	-	-	-	-	-	-	-	-	-	-	-	-	-		

Apr	M	Tu	W	Th	F	Sa	Su	M	Tu	W	Th	F	Sa	Su	M	Tu	W	Th	F	Sa	Su	M	Tu							
2019	1	2	3	4	5	6	7	8	9	10	11	12	13	14	15	16	17	18	19	20	21	22	23	24	25	26	27	28	29	30
	-	-	-	-	-	-	-	-	-	-	-	-	-	-	-	-	-	-	-	-	-	-	-	-	-	-	-	-	-	

May	W	Th	F	Sa	Su	M	Tu	W	Th	F	Sa	Su	M	Tu	W	Th	F	Sa	Su	M	Tu	W	Th	F	Sa	Su	M	Tu	W	Th	F
2019	1	2	3	4	5	6	7	8	9	10	11	12	13	14	15	16	17	18	19	20	21	22	23	24	25	26	27	28	29	30	31
	-	-	-	-	-	-	-	-	-	-	-	-	-	-	-	-	-	-	-	-	-	-	-	-	-	-	-	-	-	-	

June	Sa	Su	M	Tu	W	Th	F	Sa	Su	M	Tu	W	Th	F	Sa	Su	M	Tu	W	Th	F	Sa	Su							
2019	1	2	3	4	5	6	7	8	9	10	11	12	13	14	15	16	17	18	19	20	21	22	23	24	25	26	27	28	29	30
	-	-	-	-	-	-	-	-	-	-	-	-	-	-	-	-	-	-	-	-	-	-	-	-	-	-	-	-	-	

Jul	M	Tu	W	Th	F	Sa	Su	M	Tu	W	Th	F	Sa	Su	M	Tu	W	Th	F	Sa	Su	M	Tu	W							
2019	1	2	3	4	5	6	7	8	9	10	11	12	13	14	15	16	17	18	19	20	21	22	23	24	25	26	27	28	29	30	31
	-	-	-	-	-	-	-	-	-	-	-	-	-	-	-	-	-	-	-	-	-	-	-	-	-	-	-	-	-		

Aug	Th	F	Sa	Su	M	Tu	W	Th	F	Sa	Su	M	Tu	W	Th	F	Sa	Su	M	Tu	W	Th	F	Sa	Su						
2019	1	2	3	4	5	6	7	8	9	10	11	12	13	14	15	16	17	18	19	20	21	22	23	24	25	26	27	28	29	30	31
	-	-	-	-	-	-	-	-	-	-	-	-	-	-	-	-	-	-	-	-	-	-	-	-	-	-	-	-	-		

Sep	Su	M	Tu	W	Th	F	Sa	Su	M	Tu	W	Th	F	Sa	Su	M	Tu	W	Th	F	Sa	Su	M							
2019	1	2	3	4	5	6	7	8	9	10	11	12	13	14	15	16	17	18	19	20	21	22	23	24	25	26	27	28	29	30
	-	-	-	-	-	-	-	-	-	-	-	-	-	-	-	-	-	-	-	-	-	-	-	-	-	-	-	-	-	

 Reserved



Luxury vacation rental
 Sainte Anne - Guadeloupe
"Villa Yin & Yang"

10
[Book now](#)

Availability calendar - from : september 2019






Oct	Tu	W	Th	F	Sa	Su	M	Tu	W	Th	F	Sa	Su	M	Tu	W	Th	F	Sa	Su	M	Tu	W	Th	F	Sa	Su	M	Tu	W	Th
2019	1	2	3	4	5	6	7	8	9	10	11	12	13	14	15	16	17	18	19	20	21	22	23	24	25	26	27	28	29	30	31
-	-	-	-	-	-	-	-	-	-	-	-	-	-	-	-	-	-	-	-	-	-	-	-	-	-	-	-	-	-	-	-

Nov	F	Sa	Su	M	Tu	W	Th	F	Sa	Su	M	Tu	W	Th	F	Sa	Su	M	Tu	W	Th	F	Sa							
2019	1	2	3	4	5	6	7	8	9	10	11	12	13	14	15	16	17	18	19	20	21	22	23	24	25	26	27	28	29	30
-	-	-	-	-	-	-	-	-	-	-	-	-	-	-	-	-	-	-	-	-	-	-	-	-	-	-	-	-	-	-

Reserved

[Month : Next >>](#)

Rental rates - Luxury Villa - from 2 to 12 Person(s)

Rates	Night	Weekend	week	2 weeks	Month
 Low season	-	-	\$3856*	-	-
 Mid season	-	-	\$4557*	-	-
 High season	-	-	\$5726*	-	-
 Festive specials	-	-	\$7595*	-	-
 Promotional period	-	-	\$2688*	-	-

[Book now](#)

Booking conditions

- **Reservation**
 - Payment made upon reservation : 30% of rental sum
 - Payment balance : 1 month before the stay
 - Deposit required : \$1753*
- **rentals**
 - Service charges included
 - Day tax included
 - Cleaning charge on departure included

[▶ Book now](#)

[▶ Contact the owner](#)

Accepted methods of payment

- International Money Order • Bank transfer (wire) • Check • Draft • PayPal • Cash

Contact directly the property owners

www.iha.com
 Advert No.
 54001
 >> [Book now](#) <<

Contact

Spoken languages



* Converted at the rate indicated : €100 = \$116.85 = £89

Advert No. 54001

www.iha.com

