

# Vacation rental Mont Blanc "Le Tournesol"

The chalet is well displayed in this ad. Look especially to the photos from the chalet. Unique setting in summer and winter.



**Chalet**, detached, single storey, separate entrance, in(on) a(an) Charming Property

Setting : ski to door, sporty

Capacity : from 2 to 12 person(s)

Bedroom(s) : 6

Room(s) : 7

Abondance - Upper Savoy (74) - Rhône Alpes

France

Reservation : +31 (0) 255 521570 (Netherlands)

Advert No. 64497

www.iha.com



### Vacation rental



Chalet, detached, single storey, separate entrance, in(on) a(an) Charming Property

- **Ideal for large families, family groups**
- **View :** panoramic, unobscured, not overlooked, dominant, mountain, fantastic sunset
- **Setting :** ski to door, sporty
- **Exposure :** South

" The chalet is if you rent for 12 people still very spacious. The Interior is very cozy and gives a warm feeling. The large soapstone wood stove gives delicious heat and the flames give lots of fun. Parking in front of the door is ideal. The children can around the chalet in the summer and winter games in the alpine meadow. "

### Assets

- **Parking :**  
Covered parking : 1 carport. Parking uncovered : 3 off road.
- **Advantages :**  
Ski locker, ski boot warmer, ping-pong table, 4 ping-pong bats
- **baby equipment :**  
High chair, comfort station, infant tub, baby potty

### Surroundings & location



Culture

" Mountain hiking and skiing in Portes du Soleil can now with the owner. He is at home in the mountains and he likes to give you all the wonderful places to show of Portes du Soleil. Walking and skiing for years he's been in this beautiful environment and still enjoy every moment as he is there. "

#### Leisure

- **Leisure activities less than 12 miles :**  
Alpine skiing, cross-country skiing, off-piste skiing, ski-trekking, Télémart skiing, snowboarding, luge (run), ice-skating, bathing, pedalo, water skiing, windsurfing, sailing, canoeing, canyoning, rafting, golf, tennis, hiking, rappel, rock climbing, mountain bike (path), paragliding, boat trips, horse trekking, donkey rides, mini-golf, fishing, fishing, pétanque field
- **Supervised :**  
Ski school, kids ski area, sailing school, tennis school
- **Attractions and relaxation :**  
Bar/pub, discotheque, restaurant, movie theater, festivals, antiques & bric-a-brac

#### Surroundings

- **Locality :**  
Ski slopes 0.62mi.  
Ski lifts 0.62mi.  
Heated swimming pool 6mi.  
Sandy beach 12.5mi.  
Public tennis court 0.62mi.  
18 hole golf course 12.5mi.  
Flying clubs >31mi.  
River rapids 6mi.  
River 0.62mi.  
Lake 12.5mi.  
Forest 0.62mi.  
Mountain range <165'  
Marina 12.5mi.  
Via ferrata-alpinism 3mi.
- **Amenities :**  
Village center 0.5mi.  
Bus stop / bus station <165'  
Ski bus pick up point <165'  
Bike/mountain bike hire 6mi.  
Boat rental 12.5mi.  
Ski hire store 0.62mi.  
Breadstore 0.62mi.  
Local stores 0.62mi.  
Supermarket 0.62mi.  
Hairdressing salon 0.62mi.  
Internet cafe 0.62mi.  
Mail office 0.62mi.

Bank 0.62mi.  
ATM 0.62mi.  
Drugstore 0.62mi.  
Doctor 0.62mi.



panorama



Summer



balcony

### Exterior

- **Ground surface :**  
6,500 Sq.ft.
- **Outside accommodation :**  
Covered terrace, balcony
- **Outside setting :**  
Yard, landscaped yard
- **Outside amenities :**  
Yard table(s), 10 yard seat(s), trolley on wheels, 2 chaise(s) longue(s), child's swing



interior

### Interior

- **Receive up to :**  
from 2 to 12 person(s)
- **Liveable floor area :**  
1,940 Sq.ft.
- **Interior layout :**  
7 Room(s), 6 bedroom(s), 1 bathroom, 1 shower room, 4 toilets, living room 530 Sq. ft., large american style kitchen, dining area, cosy nook, veranda
- **Sleeps - bed(s) :**  
1 full bed(s), 8 queen-size bed(s), 1 bunk beds, 1 baby cradle
- **Guest facilities :**  
T.V., digital home cinema, hi-fi system, DVD player, board games, book collection, movie collection, Hanging wardrobe, hair dryer, heated towel rail, electric heating, solid fuel burning stoves, Drapes, Blinds, Double glazed, digipad entry system
- **Appliances :**  
Crockery/flatware, kitchen utensils, cafetiere, electric coffee maker, electric kettle, juicer, electric stove, oven, micro-wave oven, extractor hood, reffridgerator, deep freeze, dish washer, washing machine, clothes dryer, vacuum cleaner

### Services

- **washing :**  
Sheets supplement (+\$6\*), Towels supplement (+\$8\*), Linen supplement (+\$8\*)
- **Single family home :**  
Cleaning on departure supplement (+\$152\*), Snow clearance, Parking

### For your guidance

- **For your guidance**  
Kids welcome  
Non smoking rental, cell phone network coverage, personal transport advisable  
Water : hot/cold  
Local voltage supply : 220-240V / 50Hz  
Electricity supply : mains



interior

Photo album - 1



Summer



panorama



balcony



interior



interior

Photo album - 2



dining area



large american style kitchen



bedroom



bedroom



bathroom



bathroom

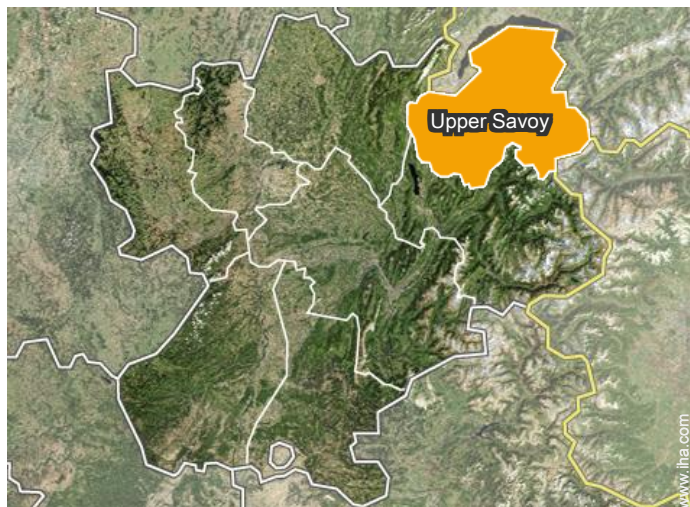


Outside setting




Surroundings

### Location



### Location & Access

" The chalet is within easy reach. It is located 1 km outside of Abondance in a lovely quiet area between the cows and meadows. "

 GPS coordinates in degrees, minutes, seconds: Latitude 46°17'6"N - Longitude 6°42'0"E ([Dwelling](#))

#### Address

→ Lieu dit Melon  
74360 Abondance

#### • Freeway (exit) A9 no. 18

→ Monthey, Valais Canton, Switzerland  
→ Distance : 18.5mi.  
→ Time : 45'

#### • Airport Genève

→ Geneva, Geneva Canton, Switzerland  
→ Distance : 43,5mi.  
→ Time : 1h15'

- Châtel : (6mi.)
- Avoriaz : (12.5mi.)

### Contact

Spoken languages



Vacation rental  
Rhône Alpes - France  
"Le Tournesol"

7  
[Book now](#)

Availability calendar - from : november 2017

Nov	W	Th	F	Sa	Su	M	Tu	W	Th	F	Sa	Su	M	Tu	W	Th	F	Sa	Su	M	Tu	W	Th							
2017	1	2	3	4	5	6	7	8	9	10	11	12	13	14	15	16	17	18	19	20	21	22	23	24	25	26	27	28	29	30
																		-	-	-	-	-	-	-	-	-	-	-	-	

Dec	F	Sa	Su	M	Tu	W	Th	F	Sa	Su	M	Tu	W	Th	F	Sa	Su	M	Tu	W	Th	F	Sa	Su							
2017	1	2	3	4	5	6	7	8	9	10	11	12	13	14	15	16	17	18	19	20	21	22	23	24	25	26	27	28	29	30	31
	-	-	-	-	-	-	-	-	-	-	-	-	-	-	-	-	-	-	-	-	-	-	-	-	-	-	-	-	-	-	

Jan	M	Tu	W	Th	F	Sa	Su	M	Tu	W	Th	F	Sa	Su	M	Tu	W	Th	F	Sa	Su	M	Tu	W							
2018	1	2	3	4	5	6	7	8	9	10	11	12	13	14	15	16	17	18	19	20	21	22	23	24	25	26	27	28	29	30	31
	-	-	-	-	-	-	-	-	-	-	-	-	-	-	-	-	-	-	-	-	-	-	-	-	-	-	-	-	-	-	

Feb	Th	F	Sa	Su	M	Tu	W	Th	F	Sa	Su	M	Tu	W	Th	F	Sa	Su	M	Tu	W							
2018	1	2	3	4	5	6	7	8	9	10	11	12	13	14	15	16	17	18	19	20	21	22	23	24	25	26	27	28
	-	-	-	-	-	-	-	-	-	-	-	-	-	-	-	-	-	-	-	-	-	-	-	-	-	-	-	-

Mar	Th	F	Sa	Su	M	Tu	W	Th	F	Sa	Su	M	Tu	W	Th	F	Sa	Su	M	Tu	W	Th	F	Sa							
2018	1	2	3	4	5	6	7	8	9	10	11	12	13	14	15	16	17	18	19	20	21	22	23	24	25	26	27	28	29	30	31
	-	-	-	-	-	-	-	-	-	-	-	-	-	-	-	-	-	-	-	-	-	-	-	-	-	-	-	-	-	-	

Apr	Su	M	Tu	W	Th	F	Sa	Su	M	Tu	W	Th	F	Sa	Su	M	Tu	W	Th	F	Sa	Su	M							
2018	1	2	3	4	5	6	7	8	9	10	11	12	13	14	15	16	17	18	19	20	21	22	23	24	25	26	27	28	29	30
	-	-	-	-	-	-	-	-	-	-	-	-	-	-	-	-	-	-	-	-	-	-	-	-	-	-	-	-	-	-

May	Tu	W	Th	F	Sa	Su	M	Tu	W	Th	F	Sa	Su	M	Tu	W	Th	F	Sa	Su	M	Tu	W	Th							
2018	1	2	3	4	5	6	7	8	9	10	11	12	13	14	15	16	17	18	19	20	21	22	23	24	25	26	27	28	29	30	31
	-	-	-	-	-	-	-	-	-	-	-	-	-	-	-	-	-	-	-	-	-	-	-	-	-	-	-	-	-	-	

June	F	Sa	Su	M	Tu	W	Th	F	Sa	Su	M	Tu	W	Th	F	Sa	Su	M	Tu	W	Th	F	Sa							
2018	1	2	3	4	5	6	7	8	9	10	11	12	13	14	15	16	17	18	19	20	21	22	23	24	25	26	27	28	29	30
	-	-	-	-	-	-	-	-	-	-	-	-	-	-	-	-	-	-	-	-	-	-	-	-	-	-	-	-	-	-

Jul	Su	M	Tu	W	Th	F	Sa	Su	M	Tu	W	Th	F	Sa	Su	M	Tu	W	Th	F	Sa	Su	M	Tu							
2018	1	2	3	4	5	6	7	8	9	10	11	12	13	14	15	16	17	18	19	20	21	22	23	24	25	26	27	28	29	30	31
	-	-	-	-	-	-	-	-	-	-	-	-	-	-	-	-	-	-	-	-	-	-	-	-	-	-	-	-	-	-	

Aug	W	Th	F	Sa	Su	M	Tu	W	Th	F	Sa	Su	M	Tu	W	Th	F	Sa	Su	M	Tu	W	Th	F							
2018	1	2	3	4	5	6	7	8	9	10	11	12	13	14	15	16	17	18	19	20	21	22	23	24	25	26	27	28	29	30	31
	-	-	-	-	-	-	-	-	-	-	-	-	-	-	-	-	-	-	-	-	-	-	-	-	-	-	-	-	-	-	



Vacation rental  
Mont Blanc - France  
"Le Tournesol"

8  
[Book now](#)

Availability calendar - from : august 2018




Sep	Sa	Su	M	Tu	W	Th	F	Sa	Su	M	Tu	W	Th	F	Sa	Su	M	Tu	W	Th	F	Sa	Su							
2018	1	2	3	4	5	6	7	8	9	10	11	12	13	14	15	16	17	18	19	20	21	22	23	24	25	26	27	28	29	30
-	-	-	-	-	-	-	-	-	-	-	-	-	-	-	-	-	-	-	-	-	-	-	-	-	-	-	-	-	-	

Oct	M	Tu	W	Th	F	Sa	Su	M	Tu	W	Th	F	Sa	Su	M	Tu	W	Th	F	Sa	Su	M	Tu	W							
2018	1	2	3	4	5	6	7	8	9	10	11	12	13	14	15	16	17	18	19	20	21	22	23	24	25	26	27	28	29	30	31
-	-	-	-	-	-	-	-	-	-	-	-	-	-	-	-	-	-	-	-	-	-	-	-	-	-	-	-	-	-	-	

[Month : Next >>](#)

Rental rates - Chalet - from 2 to 12 Person(s)

Rates	Night	Weekend	week	2 weeks	Month
 Low season	-	-	\$1114* (Saturday)	-	-
 Mid season	-	-	\$2287* (Saturday)	-	-
 High season	-	-	\$2874* (Saturday)	-	-

(Check-in day)

[Book now](#)

Booking conditions

• Reservation

- Payment made upon reservation : 30% of rental sum
- Payment balance : 45 days before the stay
- Deposit required : \$880\*

• rentals

- Day tax included
- Cleaning charge levy on departure : \$152\*

[▶ Book now](#)

[▶ Contact the owner](#)

Accepted methods of payment

- Bank transfer (wire)

Contact directly the property owners

[www.iha.com](http://www.iha.com)  
Advert No.  
64497  
[>> Book now <<](#)

Contact

Spoken languages



\* Converted at the rate indicated : €100 = \$117.29 = £89.59

Advert No. 64497

[www.iha.com](http://www.iha.com)

