

# Vacation rental Paris region "Riverside Studio"

Residence ideally located south of Paris to visit the capital and its region.  
Versailles and Disneyland by expressways in the immediate vicinity.



**Apartment-Flat** first floor, separate entrance, in(on) a(an) Estate 2 floors

Setting : tranquil, urban

Capacity : from 1 to 4 person(s)

Bedroom(s) : 1

Room(s) : 2

Alfortville - Val de Marne (94) - Île de France

France

Reservation : +33 (0) 143765001 (France)

Advert No. 1877

www.ihaholiday.com



## Vacation rental



Apartment-Flat first floor, separate entrance, in(on) a(an) Estate 2 floors

- **Ideal for all age groups, family groups**
- **View** : not overlooked, garden/park, river, city, street/avenue
- **Setting** : tranquil, urban
- **Exposure** : West

"Apartment comfort with terrace unopposed on garden. The calm of the Paris province. All shops and within walking distance transportation."

## Assets

- **Parking** :  
Covered parking : 1 closed individual place (s). Parking uncovered



## Surroundings & location



City



Fishing

"Guests of the residence stroll on the banks of the Seine, you will observe its rich fauna and varied, for sportsmen, the Quays of the Seine are the privileged place of joggers. The exceptional municipal swimming pool (700 m) welcomes you to enjoy waterslides and all other aquatic and sporting high-level activities. You can remove you by visiting the site of Chinagora (500 m) or China will welcome you with its typical architecture and its pagoda roofs; you are dripping the culinary specialities in gourmet restaurants."

### Leisure

- **Leisure activities less than 12 miles** :  
Ice-skating, golf, tennis, squash, pathway/broadwalk, hiking, mountain bike (path), flying (club), rollerblade/rollerskate (circuit), go-karting, ten-pin bowling, paintball, fishing, pétanque field
- **Attractions and relaxation** :

Bar/pub, discotheque, restaurant, movie theater, karaoke, park and garden, leisure park, zoo/animal park, exhibition center, art gallery, historical site, museum, theater, opera house, festivals, antiques & bric-a-brac, casino, race track, thermal baths, beauticians, fitness center

### Surroundings

- **Locality** :  
Ice skating rink 1.25mi.  
Public swimming pool 0.5mi.  
River <165'  
Forest 1.85mi.
- **Amenities** :  
Downtown 0.3mi.  
Bus stop / bus station 990'  
Subway station 0.5mi.  
Breadstore 990'  
Caterer 990'  
Local stores 990'  
Supermarket 0.5mi.  
Hairdressing salon 0.3mi.  
Mail office 0.62mi.  
Bank 0.3mi.  
ATM 0.3mi.  
Drugstore 0.3mi.  
Doctor 0.3mi.  
Hospital 0.93mi.



Advert No. 1877

[www.ih.com](http://www.ih.com)





### Interior

- **Receive up to :**  
from 1 to 4 person(s) (4 adults)
- **Liveable floor area :**  
323 Sq.ft.
- **Interior layout :**  
2 Room(s), 1 bedroom(s), 1 shower room, 1 toilets, living room 140 Sq.ft., dining area
- **Sleeps - bed(s) :**  
1 full bed(s), 1 sleeper sofa(s) 2 pers, 2 twin bed(s), 1 baby cradle
- **Guest facilities :**  
T.V., hi-fi system, DVD player, t.v points, high speed internet access, wifi, cupboard, Hanging wardrobe, radio alarmclock, hair dryer, mobile cool air fan, electric heating, Glazed in area, Drapes, Blinds, Double glazed, Rolling shutters
- **Appliances :**  
Crockery/flatware, kitchen utensils, cafetiere, electric coffee maker, electric kettle, toaster, electric hobs, micro-wave oven, extractor hood, refridgerator, vacuum cleaner, iron, ironing board

### Exterior

- **Ground surface :**  
3,300 Sq.ft.
- **Outside accommodation :**  
Terrace 110 Sq.ft.
- **Outside setting :**  
Private courtyard, enclosed grounds 3,300 Sq.ft., yard 3,300 Sq.ft., lawn 650 Sq.ft., kitchen garden, river
- **Outside amenities :**  
Summer living area, BBQ, yard table(s), 4 yard seat(s), yard seated area



shower room

### Services

- **washing :**  
Sheets, Towels, Linen, Comforter(s), Comforter(s), Pillows
- **Single family home :**  
Caretaker/concierge, Parking supplement (+ \$12\*)

### For your guidance

- **For your guidance**  
Kids welcome  
Pets accepted under certain conditions (ask the owner)  
Non smoking rental, cell phone network coverage



bedroom

Photo album - 1



bedroom

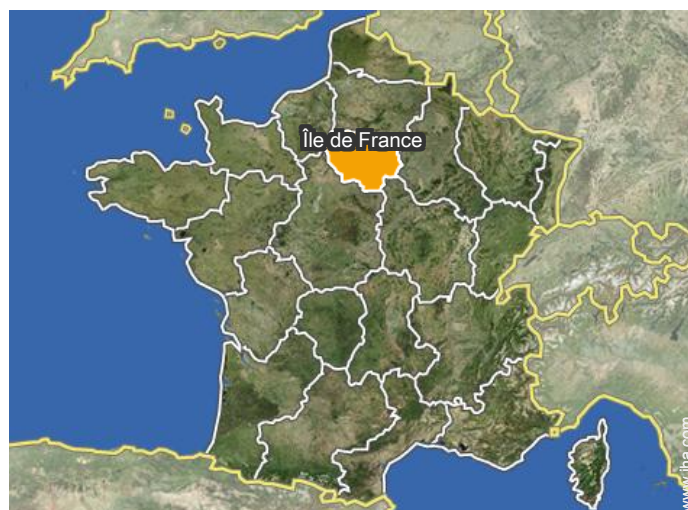
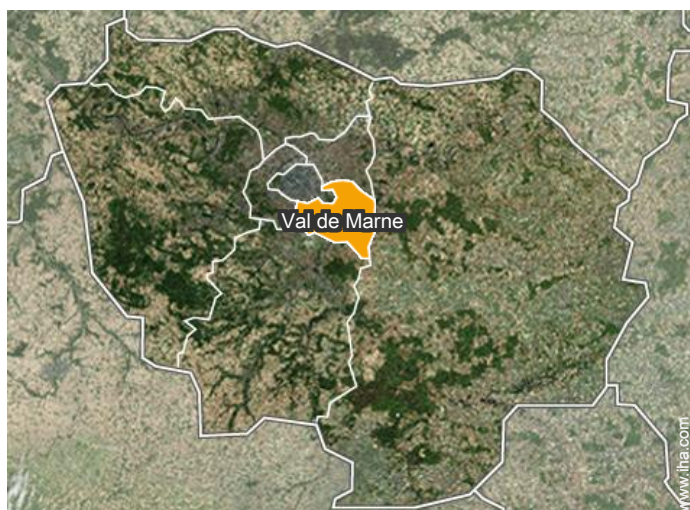
Photo album - 2



shower room




### Location



### Location & Access

" Rental located in the South of Paris, at 10 km from the Orly Airport (28 km from CDG). Very easy access via the No. 186 or motorway A4 which bring you closer to the residence. Station METRO Ecole Vétérinaire, RER station Alfortville, BUS stop Chinagora. "

 GPS coordinates in degrees, minutes, seconds: Latitude 48°48'41"N - Longitude 2°24'39"E (Dwelling)

#### Address

→ 16 Quai Blanqui  
94140 Alfortville

#### • Airport Paris Orly

→ Paris, Paris, Île de France, France  
→ Distance : 6mi.  
→ Time : 20'

#### • Freeway (exit) A86 sortie Alfortville

→ Vitry sur Seine, Val de Marne, Île de France, France  
→ Distance : 4.5mi.  
→ Time : 10'

#### • Railroad station Paris Austerlitz

→ Paris, Paris, Île de France, France  
→ Distance : 4.5mi.  
→ Time : 20'

- Vincennes : (0.93mi.)
- Joinville le Pont : (1.5mi.)
- Charenton le Pont : (0.62mi.)

### Contact

Spoken languages



# Vacation rental Île de France - France "Riverside Studio"

7  
[Book now](#)

## Availability calendar - from : december 2017

Dec	F	Sa	Su	M	Tu	W	Th	F	Sa	Su	M	Tu	W	Th	F	Sa	Su	M	Tu	W	Th	F	Sa	Su							
2017	1	2	3	4	5	6	7	8	9	10	11	12	13	14	15	16	17	18	19	20	21	22	23	24	25	26	27	28	29	30	31

Jan	M	Tu	W	Th	F	Sa	Su	M	Tu	W	Th	F	Sa	Su	M	Tu	W	Th	F	Sa	Su	M	Tu	W	Th	F	Sa	Su	M	Tu	W
2018	1	2	3	4	5	6	7	8	9	10	11	12	13	14	15	16	17	18	19	20	21	22	23	24	25	26	27	28	29	30	31

Feb	Th	F	Sa	Su	M	Tu	W	Th	F	Sa	Su	M	Tu	W	Th	F	Sa	Su	M	Tu	W								
2018	1	2	3	4	5	6	7	8	9	10	11	12	13	14	15	16	17	18	19	20	21	22	23	24	25	26	27	28	

Mar	Th	F	Sa	Su	M	Tu	W	Th	F	Sa	Su	M	Tu	W	Th	F	Sa	Su	M	Tu	W	Th	F	Sa							
2018	1	2	3	4	5	6	7	8	9	10	11	12	13	14	15	16	17	18	19	20	21	22	23	24	25	26	27	28	29	30	31

Apr	Su	M	Tu	W	Th	F	Sa	Su	M	Tu	W	Th	F	Sa	Su	M	Tu	W	Th	F	Sa	Su	M	Tu	W	Th	F	Sa	Su	M	
2018	1	2	3	4	5	6	7	8	9	10	11	12	13	14	15	16	17	18	19	20	21	22	23	24	25	26	27	28	29	30	

May	Tu	W	Th	F	Sa	Su	M	Tu	W	Th	F	Sa	Su	M	Tu	W	Th	F	Sa	Su	M	Tu	W	Th	F	Sa	Su	M	Tu	W	Th
2018	1	2	3	4	5	6	7	8	9	10	11	12	13	14	15	16	17	18	19	20	21	22	23	24	25	26	27	28	29	30	31

June	F	Sa	Su	M	Tu	W	Th	F	Sa	Su	M	Tu	W	Th	F	Sa	Su	M	Tu	W	Th	F	Sa							
2018	1	2	3	4	5	6	7	8	9	10	11	12	13	14	15	16	17	18	19	20	21	22	23	24	25	26	27	28	29	30

Jul	Su	M	Tu	W	Th	F	Sa	Su	M	Tu	W	Th	F	Sa	Su	M	Tu	W	Th	F	Sa	Su	M	Tu	W	Th	F	Sa	Su	M	Tu
2018	1	2	3	4	5	6	7	8	9	10	11	12	13	14	15	16	17	18	19	20	21	22	23	24	25	26	27	28	29	30	31

Aug	W	Th	F	Sa	Su	M	Tu	W	Th	F	Sa	Su	M	Tu	W	Th	F	Sa	Su	M	Tu	W	Th	F	Sa	Su	M	Tu	W	Th	F
2018	1	2	3	4	5	6	7	8	9	10	11	12	13	14	15	16	17	18	19	20	21	22	23	24	25	26	27	28	29	30	31

Sep	Sa	Su	M	Tu	W	Th	F	Sa	Su	M	Tu	W	Th	F	Sa	Su	M	Tu	W	Th	F	Sa	Su							
2018	1	2	3	4	5	6	7	8	9	10	11	12	13	14	15	16	17	18	19	20	21	22	23	24	25	26	27	28	29	30

■ Mid season     
 ■ High season     
 ■ Low season



Vacation rental  
Paris region - France  
"Riverside Studio"

8  
[Book now](#)

Availability calendar - from : september 2018

Oct	M	Tu	W	Th	F	Sa	Su	M	Tu	W	Th	F	Sa	Su	M	Tu	W	Th	F	Sa	Su	M	Tu	W							
2018	1	2	3	4	5	6	7	8	9	10	11	12	13	14	15	16	17	18	19	20	21	22	23	24	25	26	27	28	29	30	31
	-	-	-	-	-	-	-	-	-	-	-	-	-	-	-	-	-	-	-	-	-	-	-	-	-	-	-	-	-	-	

Nov	Th	F	Sa	Su	M	Tu	W	Th	F	Sa	Su	M	Tu	W	Th	F	Sa	Su	M	Tu	W	Th	F							
2018	1	2	3	4	5	6	7	8	9	10	11	12	13	14	15	16	17	18	19	20	21	22	23	24	25	26	27	28	29	30
	-	-	-	-	-	-	-	-	-	-	-	-	-	-	-	-	-	-	-	-	-	-	-	-	-	-	-	-	-	

■ Mid season
 ■ High season
 ■ Low season

[Month : Next >>](#)

Rental rates - Apartment-Flat - from 1 to 4 Person(s)

Rates	Night	Weekend	week	2 weeks	Month
<span style="color: #7ED321;">■</span> Low season	\$100* > 5	-	\$528* (Saturday)	\$997* (Saturday)	\$1877*
<span style="color: #4F81BD;">■</span> Mid season	\$100* > 5	-	\$575* (Saturday)	\$1091*	\$1877*
<span style="color: #E67E22;">■</span> High season	\$100* > 5	-	\$633* (Saturday)	\$1208*	\$1877*

(Check-in day) > Minimum Night

[Book now](#)

Booking conditions

- **Reservation**
  - Payment made upon reservation : \$117\*
  - Payment balance : on handing over the keys
  - Deposit required : \$352\*
- **rentals**
  - Service charges included
  - Day tax included
  - Cleaning charge on departure included

[▶ Book now](#)

[▶ Contact the owner](#)


Accepted methods of payment

- Check • Draft • Cash

Contact directly the property owners

[www.ihaholidayads.com](http://www.ihaholidayads.com)  
 Advert No.  
 1877  
 >> [Book now](#) <<

Contact

Spoken languages 

\* Converted at the rate indicated : €100 = \$117.29 = £89.59

Advert No. 1877

[www.ihaholidayads.com](http://www.ihaholidayads.com)

