

Vacation rental Bartholomäberg "Ferienwohnung Herold im Ferien- und Erho"

Beautiful apartment in the Montafon!



Apartment-Flat 3rd floor in(on) a(an)
Private estate 3 floors

Setting : sporty, suitable for a relaxing
break

Capacity : from 1 to 6 person(s)
Bedroom(s) : 2
Room(s) : 3

Bartholomäberg - Vorarlberg

Austria

Advert No. 4565

Reservation : +49 (0) 7266 309515 (Germany)

www.ihacom



Vacation rental



Apartment-Flat 3rd floor in(on) a(an)
Private estate 3 floors

- **Ideal for family, sporty types**
- **View :** panoramic, mountain, country side, farmland, forest
- **Setting :** sporty, suitable for a relaxing break

"Our apartment is an apartment house, quiet and sunny located on a cul de sac on the edge of the forest. Our three-room apartment of 54 m² is lovingly furnished and can accommodate up to 6 people. It has 2 bedrooms, a bathroom, a fully stocked kitchen unit, a cosy dining area and a living area. The apartment is equipped with Internet connection, satellite TV, stereo and CD player. The kitchen facilities consist of electric stove, refrigerator, dishwasher, microwave oven, coffee machine, etc. In the apartment house, a heated ski storage room and a laundry room with washing machine and dryer is located on the ground floor. The exterior offers freedom of movement enough space and facilities for adults and children or just to relax. We have also made for parking."

Assets

- **Parking :**
Parking uncovered : 1 reserved stall, 5 off road.
- **Advantages :**
Ski locker, ski boot warmer
- **baby equipment :**
High chair

Surroundings & location



Mountain



Ski

"The different ski areas offer different stimuli. From young, to old comes everyone from beginner to the sports freak. For example on the GOLM with its wide slopes, where already exciting Ladies World Cup races have been decided. Or on the sun terrace of the Hochjoch with its vast ski area and the 470 m long ski tunnel. Ideal for all claims also the vast area of the Silvretta Nova, is probably one of the most beautiful and best developed ski areas in the Alps. Athletes and nature lovers will appreciate also gargellen, where over 30 ski tours, in part go out cross-border in the neighboring Switzerland. Not to mention the area on the Bielerhöhe, a starting point for Alpine skiing and glacier tours above the tree line. There the altitude cross-country ski runs invite leader, above sea level over the frozen lake of the Silvretta in 2000 m to Nordic skiing. Ski area Kristberg in Silbertal with an 11 km-long panoramic track is as popular as ski area families grabs in Tschagguns."

Leisure

- **Leisure activities less than 12 miles :**

Alpine skiing, cross-country skiing, off-piste skiing, ski-trekking, Télémart skiing, snowboarding, luge (run), ice-skating, bathing, golf, pathway/broadwalk, hiking, rappel, rock climbing, mountain bike (path), hang-gliding, paragliding

- **Supervised :**

Ski school, kids ski area

- **Attractions and relaxation :**

Restaurant, movie theater, historical site, local craftstore

Surroundings

- **Locality :**

Ski slopes 0.62mi.
Ski lifts 0.62mi.
Ice skating rink 6mi.
Heated swimming pool 6mi.
Public swimming pool 6mi.
9 hole golf course 6mi.
Forest 0.3mi.
Mountain range 0.5mi.

- **Amenities :**

Village center 0.5mi.
Downtown 6mi.
Ski bus pick up point 165'
Bike/mountain bike hire 0.5mi.
Ski hire store 0.5mi.
Breadstore 0.5mi.
Local stores 0.5mi.
Supermarket 0.5mi.
Bank 0.5mi.
ATM 0.5mi.

Drugstore 6mi.
Hospital 6mi.



living room



Single family home



living room



living room

Interior

- **Receive up to :**
from 1 to 6 person(s) (4 adults, 2 kids)
- **Liveable floor area :**
600 Sq.ft.
- **Interior layout :**
3 Room(s), 2 bedroom(s), 1 bathroom, 1 toilets, living room 237 Sq. ft., separate kitchen, dining area
- **Sleeps - bed(s) :**
2 full bed(s), 1 twin storage bed 1 pers, 1 baby cradle
- **Guest facilities :**
Elevator, T.V., hi-fi system, internet access, wifi, wardrobe, cupboard, Hanging wardrobe, hair dryer, central heating, Drapes, entry phone system, fire alarm
- **Appliances :**
Crockery/flatware, kitchen utensils, electric coffee maker, electric kettle, toaster, electric stove, electric hobs, oven, micro-wave oven, extractor hood, refridgerator, deep freeze, dish washer, washing machine, clothes dryer, vacuum cleaner

Services

- **washing :**
Sheets, Towels, Comforter(s), Pillows
- **Single family home :**
Cleaning on departure supplement (+\$82*), Snow clearance, Caretaker/concierge, Parking

For your guidance

- **For your guidance**
Kids welcome
Non smoking rental, cell phone network coverage, personal transport advisable
Water : hot/cold
Local voltage supply : 220-240V / 50Hz
Electricity supply : mains

Floor plan



www.iha.com

Photo album - 1



Single family home



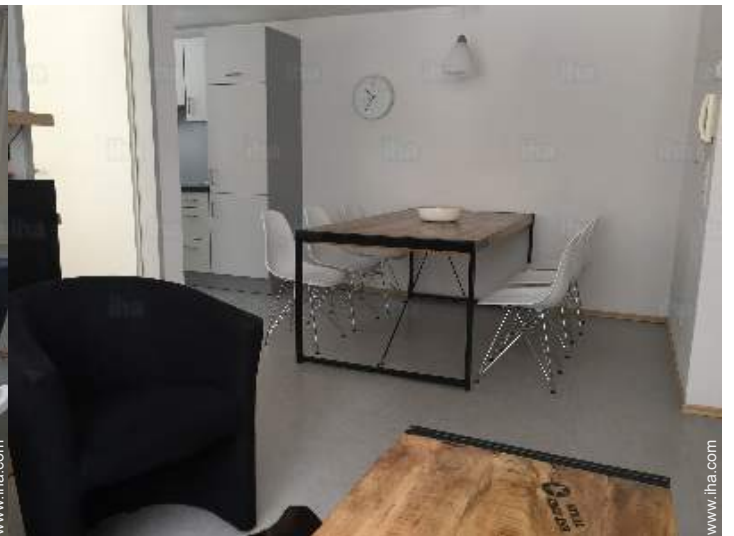
living room



living room



living room



dining area

Photo album - 2



kitchen



bedroom



bedroom



bedroom



Hanging wardrobe



toilets



toilets

washing machine



Single family home

[Favourite photo gallery - 1](#)



Jan 2019



Jan 2019



Jan 2019



Jan 2019

[Favourite photo gallery - 2](#)



Jan 2019



Jan 2019

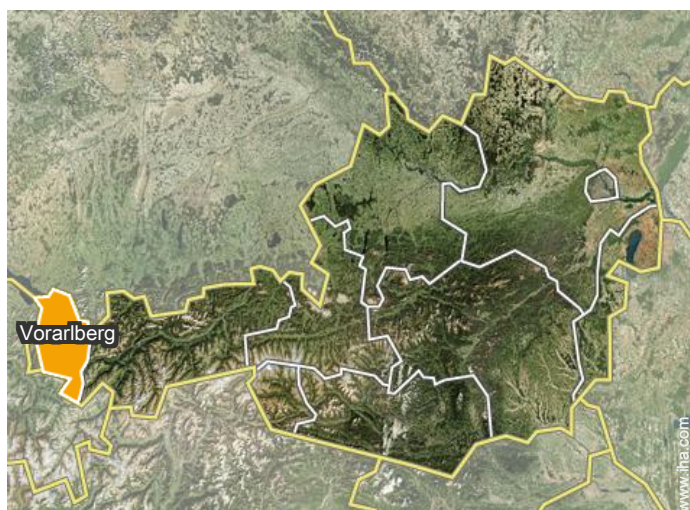


Jan 2019




Jan 2019

Location



Location & Access

" Rheintal motorway A14 - exit Montafon in Bludenz - Silvretta - Bundesstraße of B188 RichtungSchruns - except floors 23. "

 GPS coordinates in degrees, minutes, seconds: Latitude 47°6'3"N - Longitude 9° 52'8"E ([Dwelling](#))

Address

→ Ferien und Erholungsdorf Außerböden
Außerböden 21
6771 Bartholomäberg

• Freeway (exit) A14

→ Bludenz, Vorarlberg, Austria
→ Distance : 4.5mi.
→ Time : 10'

• Railroad station Vandans

→ Vandans, Vorarlberg, Austria
→ Distance : 0.3mi.
→ Time : 5'

- Schruns : (3mi.)
- Bludenz : (6mi.)

- Feldkirch : (17,5mi.)

Contact

Spoken languages



Vacation rental
Bartholomäberg - Austria
"Ferienwohnung Herold im Ferien- und Erho"

10
[Book now](#)

Availability calendar - from : january 2019

Jan	Tu	W	Th	F	Sa	Su	M	Tu	W	Th	F	Sa	Su	M	Tu	W	Th	F	Sa	Su	M	Tu	W	Th	F	Sa	Su	M	Tu	W	Th	
2019	1	2	3	4	5	6	7	8	9	10	11	12	13	14	15	16	17	18	19	20	21	22	23	24	25	26	27	28	29	30	31	

Feb	F	Sa	Su	M	Tu	W	Th	F	Sa	Su	M	Tu	W	Th	F	Sa	Su	M	Tu	W	Th	F	Sa	Su	M	Tu	W	Th			
2019	1	2	3	4	5	6	7	8	9	10	11	12	13	14	15	16	17	18	19	20	21	22	23	24	25	26	27	28			

Mar	F	Sa	Su	M	Tu	W	Th	F	Sa	Su	M	Tu	W	Th	F	Sa	Su	M	Tu	W	Th	F	Sa	Su	M	Tu	W	Th	F	Sa	Su	
2019	1	2	3	4	5	6	7	8	9	10	11	12	13	14	15	16	17	18	19	20	21	22	23	24	25	26	27	28	29	30	31	

Apr	M	Tu	W	Th	F	Sa	Su	M	Tu	W	Th	F	Sa	Su	M	Tu	W	Th	F	Sa	Su	M	Tu	W	Th	F	Sa	Su	M	Tu	
2019	1	2	3	4	5	6	7	8	9	10	11	12	13	14	15	16	17	18	19	20	21	22	23	24	25	26	27	28	29	30	

May	W	Th	F	Sa	Su	M	Tu	W	Th	F	Sa	Su	M	Tu	W	Th	F	Sa	Su	M	Tu	W	Th	F	Sa	Su	M	Tu	W	Th	F	
2019	1	2	3	4	5	6	7	8	9	10	11	12	13	14	15	16	17	18	19	20	21	22	23	24	25	26	27	28	29	30	31	

June	Sa	Su	M	Tu	W	Th	F	Sa	Su	M	Tu	W	Th	F	Sa	Su	M	Tu	W	Th	F	Sa	Su	M	Tu	W	Th	F	Sa	Su	
2019	1	2	3	4	5	6	7	8	9	10	11	12	13	14	15	16	17	18	19	20	21	22	23	24	25	26	27	28	29	30	

Jul	M	Tu	W	Th	F	Sa	Su	M	Tu	W	Th	F	Sa	Su	M	Tu	W	Th	F	Sa	Su	M	Tu	W	Th	F	Sa	Su	M	Tu	W	
2019	1	2	3	4	5	6	7	8	9	10	11	12	13	14	15	16	17	18	19	20	21	22	23	24	25	26	27	28	29	30	31	

Aug	Th	F	Sa	Su	M	Tu	W	Th	F	Sa	Su	M	Tu	W	Th	F	Sa	Su	M	Tu	W	Th	F	Sa	Su	M	Tu	W	Th	F	Sa	
2019	1	2	3	4	5	6	7	8	9	10	11	12	13	14	15	16	17	18	19	20	21	22	23	24	25	26	27	28	29	30	31	

Sep	Su	M	Tu	W	Th	F	Sa	Su	M	Tu	W	Th	F	Sa	Su	M	Tu	W	Th	F	Sa	Su	M	Tu	W	Th	F	Sa	Su	M	
2019	1	2	3	4	5	6	7	8	9	10	11	12	13	14	15	16	17	18	19	20	21	22	23	24	25	26	27	28	29	30	

Oct	Tu	W	Th	F	Sa	Su	M	Tu	W	Th	F	Sa	Su	M	Tu	W	Th	F	Sa	Su	M	Tu	W	Th	F	Sa	Su	M	Tu	W	Th	
2019	1	2	3	4	5	6	7	8	9	10	11	12	13	14	15	16	17	18	19	20	21	22	23	24	25	26	27	28	29	30	31	

- Reserved
- Mid season
- Promotional period
- High season
- Low season



Vacation rental
Vorarlberg - Bartholomäberg
"Ferienwohnung Herold im Ferien- und Erho"

11
[Book now](#)

Availability calendar - from : october 2019

Nov	F	Sa	Su	M	Tu	W	Th	F	Sa	Su	M	Tu	W	Th	F	Sa	Su	M	Tu	W	Th	F	Sa							
2019	1	2	3	4	5	6	7	8	9	10	11	12	13	14	15	16	17	18	19	20	21	22	23	24	25	26	27	28	29	30
	-	-	-	-	-	-	-	-	-	-	-	-	-	-	-	-	-	-	-	-	-	-	-	-	-	-	-	-	-	

Dec	Su	M	Tu	W	Th	F	Sa	Su	M	Tu	W	Th	F	Sa	Su	M	Tu	W	Th	F	Sa	Su	M	Tu							
2019	1	2	3	4	5	6	7	8	9	10	11	12	13	14	15	16	17	18	19	20	21	22	23	24	25	26	27	28	29	30	31
	-	-	-	-	-	-	-	-	-	-	-	-	-	-	-	-	-	-	-	-	-	-	-	-	-	-	-	-	-	-	

- Reserved
- Mid season
- Promotional period
- High season
- Low season

[Month : Next >>](#)

Rental rates - Apartment-Flat - from 1 to 6 Person(s)

Rates	Night	Weekend	week	2 weeks	Month
 Low season	\$88* (Saturday) > 7	-	\$613* (Saturday)	-	-
 Mid season	\$99* (Saturday) > 7	-	\$695* (Saturday)	-	-
 High season	\$140* (Saturday) > 7	-	\$982* (Saturday)	-	-
 Promotional period	\$204* (Saturday) > 7	-	\$1431* (Saturday)	-	-

(Check-in day) > Minimum Night

[Book now](#)



living room



living room



dining area



Single family home



living room

Booking conditions

• Reservation

- Payment made upon reservation : 20% of rental sum
- Payment balance : 1 month before the stay

• rentals

- Service charges included
- Day tax included
- Cleaning charge levy on departure : \$82*
- Anticipated supplement for :
 - supplementary bed(s)

[▶ Book now](#)

[▶ Contact the owner](#)

Accepted methods of payment

- Bank transfer (wire) • PayPal

Contact directly the property owners

www.iha.com
Advert No.
4565
[>> Book now <<](#)

Contact

Spoken languages



* Converted at the rate indicated : €100 = \$116.85 = £89

Advert No. 4565

www.iha.com

