

Vacation rental Cap de Barbaria "La Roca Can Xeloc"



House, detached, 1 floor, separate entrance, in(on) a(an) Charming Property

Setting : heavenly, rustic

Capacity : from 2 to 6 person(s)

Bedroom(s) : 3

Room(s) : 5

Cap de Barbaria - Formentera - Balearic Islands
Spain

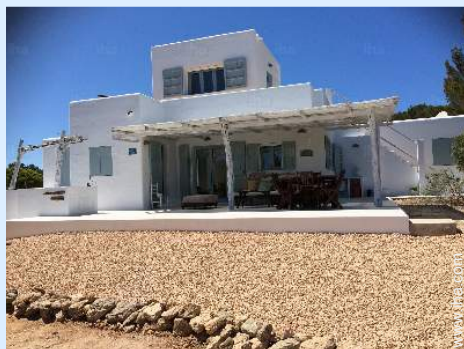
Reservation : +1 (310) 9281511 (United States)

Advert No. 65888

www.ihaholiday.com



Vacation rental



House, detached, 1 floor, separate entrance, in(on) a(an) Charming Property

- **Ideal for all age groups, family**
- **View :** panoramic, unobscured, not overlooked, sea/ocean, country side, garden/park
- **Setting :** heavenly, rustic
- **Exposure :** North-east

Assets

- **Parking :**
Parking uncovered : 14 off road.
- **baby equipment :**
High chair, infant tub, baby potty, playpen



House

Surroundings & location



Leisure

- **Leisure activities less than 12 miles :**

Bathing, snorkelling, scuba diving, windsurfing, sailing, tennis, coastal/forest paths, mountain bike (path), boat trips, horse trekking, spear fishing

- **Attractions and relaxation :**

Bar/pub, discotheque, restaurant, movie theater, park and garden, nature reserve, art gallery, historical site, museum, festivals, health spa, beauticians, fitness center

Surroundings

- **Amenities :**

Village center 3mi.
Bus stop / bus station 1.5mi.
Scooter/motorbike hire 6mi.
Car rental 6mi.
Boat rental 6mi.
Household linens for hire/laundry services 4.5mi.
Breadstore 3mi.
Local stores 3mi.
Supermarket 1.25mi.
High class retailers 3mi.
Hairdressing salon 3mi.
Internet cafe 3mi.
Mail office 3mi.
Bank 3mi.
ATM 3mi.
Drugstore 3mi.
Doctor 4.5mi.
Nurse 4.5mi.
Hospital 4.5mi.



House



façade

Vacation rental
Cap de Barbaria - Spain
"La Roca Can Xeloc"

3
[Book now](#)



view from the house

Interior

- **Receive up to :**

from 2 to 6 person(s)

- **Liveable floor area :**

1,300 Sq.ft.

- **Interior layout :**

5 Room(s), 3 bedroom(s), 3 shower room, 3 toilets, living room 323 Sq.ft., american style kitchen, dining area, tv den, patio

- **Sleeps - bed(s) :**

3 full bed(s), 2 queen-size bed(s), 1 king-size bed(s), 3 twin bed(s), 1 baby cradle

- **Guest facilities :**

T.V., hi-fi system, book collection, t.v points, cable/satelite, internet access, wifi, wardrobe, Hanging wardrobe, hair dryer, fly screens, partly air-conditioned, electric heating, Drapes

- **Appliances :**

Crockery/flatware, cafetiere, electric espresso coffee maker, toaster, gaz stove, oven, refridgerator, deep freeze, dish washer, washing machine

Exterior

- **Ground surface :**

2.5 acres

- **Outside accommodation :**

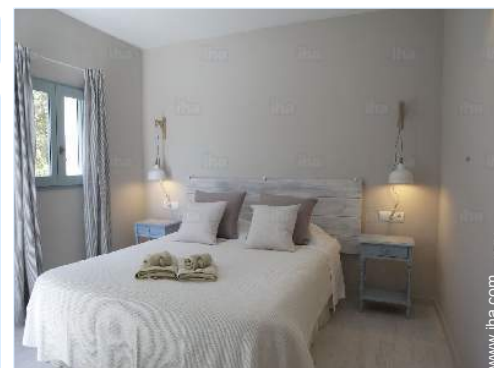
Terrace 860 Sq.ft., roof terrace 860 Sq.ft., balcony 323 Sq.ft., sundeck 160 Sq.ft., pergola 323 Sq.ft.

- **Outside setting :**

Yard > 0.25 acre, tropical garden > 0.25 acre, pinewood 0.75 acre

- **Outside amenities :**

Summer living area, BBQ, yard table(s), yard seat(s), parasol, 2 chaise(s) longue(s), 2 sun recliner(s)



bedroom

Services

- **washing :**

Sheets (1 X / per week), Towels (1 X / per week), Linen (1 X / per week), Beach towels (1 X / per week), Comforter(s) (1 X / per week), Comforter(s), Pillows

- **Single family home :**

Cleaning supplement, Cleaning on departure, Caretaker/concierge, Parking

- **Personnel :**

Staff supplement, Chef(s) supplement, Baby sitting supplement

For your guidance

- **For your guidance**

Kids welcome

Pets friendly

Cell phone network coverage, personal transport advisable

Water : hot/cold, water not drinkable

Local voltage supply : 220-240V / 50Hz

Electricity supply : mains



bedroom

Advert No. 65888

www.iha.com



>> VACATION HOMES

DIRECT BY OWNERS

Photo album - 1



House



façade



House



view from the house



bedroom

Photo album - 2



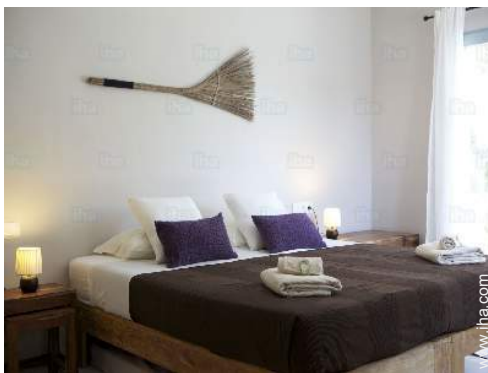
bedroom



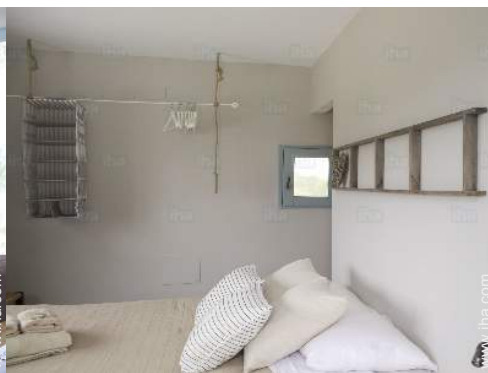
bedroom



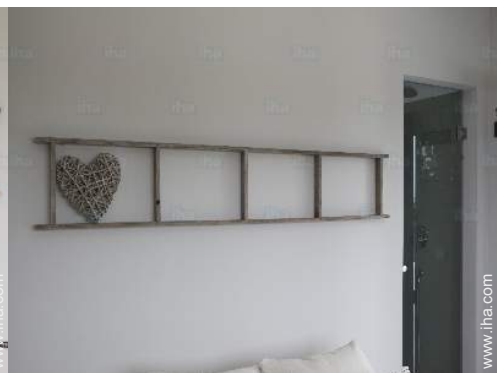
bedroom



bedroom



bedroom



bedroom



shower room



shower room



shower room



Kitchen Area



dining area

Photo album - 3



Kitchen Area



tv den



Guest facilities and furnishings



outside furniture



terrace



Outside amenities



Guest facilities and furnishings



Single family home



Single family home



pergola



balcony




House

Location



Location & Access

 GPS coordinates in degrees, minutes, seconds: Latitude 38°39'34"N - Longitude 1°24'45"E ([Dwelling](#))

Address

→ La Roca Can Xeloc
ES CAP 1815
07860 Cap de Barbaria

• [Sea port Formentera La Savina](#)

→ Sant Francesc de Formentera,
Formentera, Balearic Islands, Spain
→ Distance : 15.5mi.
→ Time : 30'

- Cap de Barbaria : (0.62mi.)
- Sant Francesc de Formentera : (4.5mi.)
- San Fernando (Sant Ferran de Ses Roques) : (4.5mi.)

Contact

Spoken languages



Vacation rental
Formentera - Balearic Islands
"La Roca Can Xeloc"

8
[Book now](#)

Availability calendar - from : october 2019

Oct	Tu	W	Th	F	Sa	Su	M	Tu	W	Th	F	Sa	Su	M	Tu	W	Th	F	Sa	Su	M	Tu	W	Th							
2019	1	2	3	4	5	6	7	8	9	10	11	12	13	14	15	16	17	18	19	20	21	22	23	24	25	26	27	28	29	30	31
																	-	-	-	-	-	-	-	-	-	-	-	-	-	-	

Nov	F	Sa	Su	M	Tu	W	Th	F	Sa	Su	M	Tu	W	Th	F	Sa	Su	M	Tu	W	Th	F	Sa							
2019	1	2	3	4	5	6	7	8	9	10	11	12	13	14	15	16	17	18	19	20	21	22	23	24	25	26	27	28	29	30
	-	-	-	-	-	-	-	-	-	-	-	-	-	-	-	-	-	-	-	-	-	-	-	-	-	-	-	-	-	

Dec	Su	M	Tu	W	Th	F	Sa	Su	M	Tu	W	Th	F	Sa	Su	M	Tu	W	Th	F	Sa	Su	M	Tu							
2019	1	2	3	4	5	6	7	8	9	10	11	12	13	14	15	16	17	18	19	20	21	22	23	24	25	26	27	28	29	30	31
	-	-	-	-	-	-	-	-	-	-	-	-	-	-	-	-	-	-	-	-	-	-	-	-	-	-	-	-	-	-	

Jan	W	Th	F	Sa	Su	M	Tu	W	Th	F	Sa	Su	M	Tu	W	Th	F	Sa	Su	M	Tu	W	Th	F							
2020	1	2	3	4	5	6	7	8	9	10	11	12	13	14	15	16	17	18	19	20	21	22	23	24	25	26	27	28	29	30	31
	-	-	-	-	-	-	-	-	-	-	-	-	-	-	-	-	-	-	-	-	-	-	-	-	-	-	-	-	-	-	

Feb	Sa	Su	M	Tu	W	Th	F	Sa	Su	M	Tu	W	Th	F	Sa	Su	M	Tu	W	Th	F	Sa							
2020	1	2	3	4	5	6	7	8	9	10	11	12	13	14	15	16	17	18	19	20	21	22	23	24	25	26	27	28	29
	-	-	-	-	-	-	-	-	-	-	-	-	-	-	-	-	-	-	-	-	-	-	-	-	-	-	-	-	-

Mar	Su	M	Tu	W	Th	F	Sa	Su	M	Tu	W	Th	F	Sa	Su	M	Tu	W	Th	F	Sa	Su	M	Tu							
2020	1	2	3	4	5	6	7	8	9	10	11	12	13	14	15	16	17	18	19	20	21	22	23	24	25	26	27	28	29	30	31
	-	-	-	-	-	-	-	-	-	-	-	-	-	-	-	-	-	-	-	-	-	-	-	-	-	-	-	-	-	-	

Apr	W	Th	F	Sa	Su	M	Tu	W	Th	F	Sa	Su	M	Tu	W	Th	F	Sa	Su	M	Tu	W	Th							
2020	1	2	3	4	5	6	7	8	9	10	11	12	13	14	15	16	17	18	19	20	21	22	23	24	25	26	27	28	29	30
	-	-	-	-	-	-	-	-	-	-	-	-	-	-	-	-	-	-	-	-	-	-	-	-	-	-	-	-	-	-

May	F	Sa	Su	M	Tu	W	Th	F	Sa	Su	M	Tu	W	Th	F	Sa	Su	M	Tu	W	Th	F	Sa	Su							
2020	1	2	3	4	5	6	7	8	9	10	11	12	13	14	15	16	17	18	19	20	21	22	23	24	25	26	27	28	29	30	31
	-	-	-	-	-	-	-	-	-	-	-	-	-	-	-	-	-	-	-	-	-	-	-	-	-	-	-	-	-	-	

June	M	Tu	W	Th	F	Sa	Su	M	Tu	W	Th	F	Sa	Su	M	Tu	W	Th	F	Sa	Su	M	Tu							
2020	1	2	3	4	5	6	7	8	9	10	11	12	13	14	15	16	17	18	19	20	21	22	23	24	25	26	27	28	29	30
	-	-	-	-	-	-	-	-	-	-	-	-	-	-	-	-	-	-	-	-	-	-	-	-	-	-	-	-	-	-

Jul	W	Th	F	Sa	Su	M	Tu	W	Th	F	Sa	Su	M	Tu	W	Th	F	Sa	Su	M	Tu	W	Th	F							
2020	1	2	3	4	5	6	7	8	9	10	11	12	13	14	15	16	17	18	19	20	21	22	23	24	25	26	27	28	29	30	31
	-	-	-	-	-	-	-	-	-	-	-	-	-	-	-	-	-	-	-	-	-	-	-	-	-	-	-	-	-	-	

Vacation rental
Cap de Barbaria - Spain
"La Roca Can Xeloc"

9
[Book now](#)




Availability calendar - from : july 2020

Aug	Sa	Su	M	Tu	W	Th	F	Sa	Su	M	Tu	W	Th	F	Sa	Su	M	Tu	W	Th	F	Sa	Su	M							
2020	1	2	3	4	5	6	7	8	9	10	11	12	13	14	15	16	17	18	19	20	21	22	23	24	25	26	27	28	29	30	31
-	-	-	-	-	-	-	-	-	-	-	-	-	-	-	-	-	-	-	-	-	-	-	-	-	-	-	-	-	-	-	

Sep	Tu	W	Th	F	Sa	Su	M	Tu	W	Th	F	Sa	Su	M	Tu	W	Th	F	Sa	Su	M	Tu	W							
2020	1	2	3	4	5	6	7	8	9	10	11	12	13	14	15	16	17	18	19	20	21	22	23	24	25	26	27	28	29	30
-	-	-	-	-	-	-	-	-	-	-	-	-	-	-	-	-	-	-	-	-	-	-	-	-	-	-	-	-	-	-

[Month : Next >>](#)

Rental rates - House - from 2 to 6 Person(s)

Rates	Night	Weekend	week	2 weeks	Month
 Low season	-	-	\$2035* (Saturday)	-	-
 Mid season	-	-	\$2860* (Saturday)	-	-
 High season	-	-	\$3740* (Saturday)	-	-

(Check-in day)

[Book now](#)

Booking conditions

• Reservation

- Payment made upon reservation : 30% of rental sum
- Payment balance : on handing over the keys
- Deposit required : \$550*

• rentals

- Service charges included
- Day tax included
- Cleaning charge on departure included
- Anticipated supplement for : - supplementary bed(s)

Accepted methods of payment

- Bank transfer (wire) • Cash

[▶ Book now](#)

[▶ Contact the owner](#)

Contact directly the property owners

www.iha.com
Advert No.
65888
[>> Book now <<](#)

Contact

Spoken languages



* Converted at the rate indicated : €100 = \$110 = £91

Advert No. 65888

www.iha.com



[>> VACATION HOMES](#)

DIRECT BY OWNERS