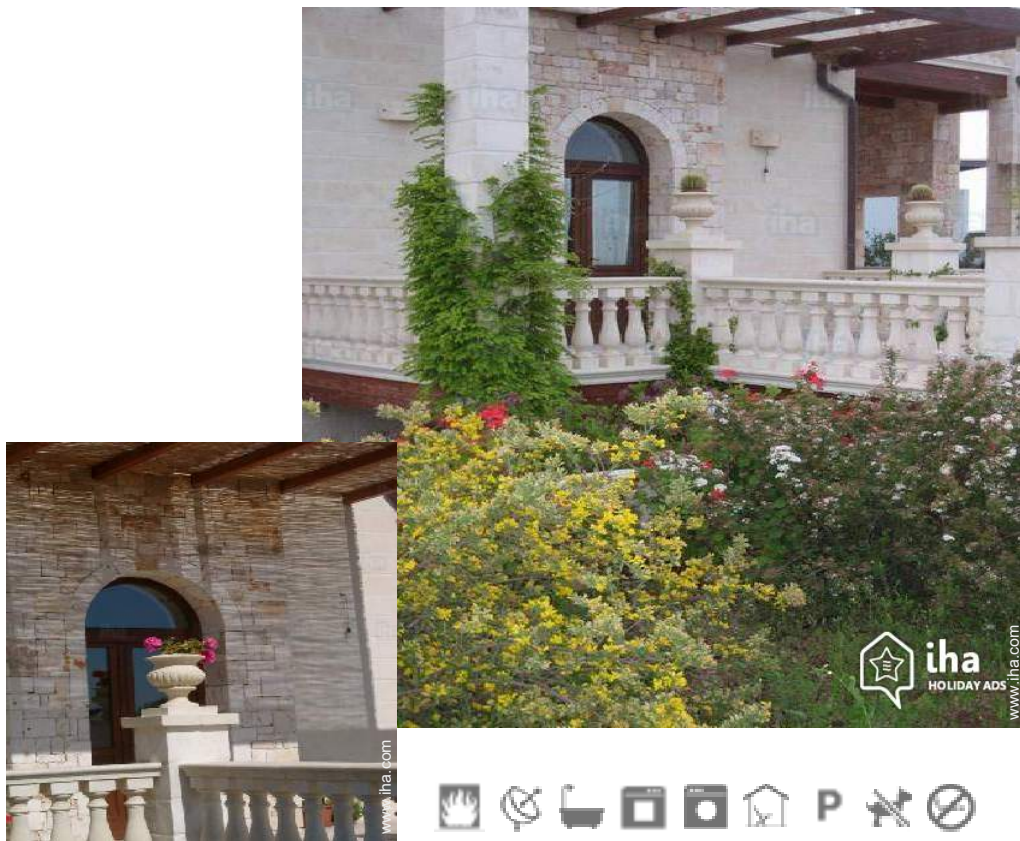


# Vacation rental Capitolo "Villa Pugliese"

Relax among olive trees and sea breezes at 900 metres from the beaches of the resort CHAPTER South of Monopoli assignee of the blue flag in 2014.



Stone-Built Residence, detached, 1 floor, separate entrance, in(on) a(an) Private property

Setting : pleasant, rural

Capacity : from 2 to 10 person(s)

Bedroom(s) : 3

Capitolo - Bari Province (BA) - Apulia

Italy

Advert No. 7054

www.iha.com



### Vacation rental



Stone-Built Residence, detached, 1 floor, separate entrance, in(on) a(an) Private property

- **Ideal for family, couples**
- **View :** sea/ocean, country side, garden/ park, farmland, nightlights
- **Setting :** pleasant, rural
- **Exposure :** South-east

" Apulian-style vacation Villa with vaults in masonry is a newly built and located in the small residence borgo maestro of " axe among olive trees, the scope and sea breeze. Very quiet location with parking just 900 meters from the sea. Finely furnished in style, with the intention of offering guests a refined and comfortable space. The villa is equipped with 2 drive: il glicine Unit with 4 beds and one bedroom on the ground floor of the villa: Rosemary unit with 6 beds and 2 bedrooms located in the basement with a large garden terrace and convivial spaces. The units are equipped with everything you need for a relaxing stay and intercommunicate with internal stair to accommodate a group of 10 people. We do not accept animals. "

### Assets

- **Parking :**  
Parking uncovered : 1 reserved stall.

### Surroundings & location



" Distances from places of interest. The location is wonderful for Centre of gravity compared to the major places of interest in Puglia: EGNATHIA GOLF CLUB 3 km; Zoo safari-Fasano 5 km; Polignano a mare, 10 km; Castellana Grotte 15 miles; Alberobello 20 Km; Ostuni 25 km; Bari 40 km; Matera 50 km; Lecce 100 miles; Trani 100 miles; Bari Palese airport 55 km; Brindisi airport 60 km "

#### Leisure

- **Leisure activities less than 12 miles :**  
Bathing, pedalo, snorkelling, surfing, windsurfing, sailing, golf, tennis, riding school, boat trips, horse trekking, mini-golf, go-karting, RC modelling track, ten-pin bowling, safari, safari photography
- **Supervised :**  
Riding school
- **Attractions and relaxation :**  
Bar/pub, discotheque, restaurant, movie theater, open air summer movie theater, leisure park, zoo/animal park, nature reserve, historical site, festivals, local craftstore, cellar and wine tasting, thermal baths

#### Surroundings

- **Locality :**  
Ice skating rink 4.5mi.  
Sea/ocean 0.5mi.  
Sandy beach 0.5mi.  
Rocky beach 0.62mi.  
Sea inlet 0.93mi.  
Public swimming pool 1.85mi.  
Public tennis court 3mi.  
18 hole golf course 1.85mi.  
Windsurfing spots 1.5mi.  
Surfing spots 0.62mi.  
Watersports centre 9mi.
- **Amenities :**  
Downtown 3mi.  
Bus stop / bus station 660'  
Bike/mountain bike hire <165'  
Household linens for hire/laundry services <165'  
Breadstore 1.25mi.  
Local stores 3mi.  
Supermarket 1.85mi.  
High class retailers 3mi.  
Hairdressing salon 3mi.  
Mail office 3mi.  
Bank 3mi.  
Doctor 3mi.  
Hospital 3mi.



Stone-Built Residence





kitchen

### Interior

- **Receive up to :**  
from 2 to 10 person(s)
- **Liveable floor area :**  
2,150 Sq.ft.
- **Interior layout :**  
3 bedroom(s), 1 bathroom, 1 shower room, living room 323 Sq.ft., separate kitchen, dining room, veranda, loggia
- **Sleeps - bed(s) :**  
1 full bed(s), 1 sleeper sofa(s) 2 pers
- **Guest facilities :**  
Fireplace, T.V., DVD player, t.v points, cable/satelite, wardrobe, Hanging wardrobe, hair dryer, central heating, Blinds, Double glazed, intruder alarm, remote controlled gates
- **Appliances :**  
Crockery/flatware, kitchen utensils, cafetiere, gaz stove, oven, extractor hood, refridgerator, deep freeze, washing machine, iron, ironing board

### Exterior

- **Ground surface :**  
0.5 acre
- **Outside accommodation :**  
Covered terrace 600 Sq.ft., roof terrace 650 Sq.ft., balcony 380 Sq.ft., sundeck 650 Sq.ft.
- **Outside setting :**  
Private courtyard, yard 1,076 Sq.ft., landscaped yard > 0.25 acre, olive grove 1,076 Sq.ft.
- **Outside amenities :**  
Yard table(s), 4 yard seat(s)



Single family home

### Services

- **washing :**  
Sheets supplement (1 X / per week +\$29\*), Towels supplement (1 X / per week +\$6\*), Comforter(s), Pillows
- **Single family home :**  
Cleaning on departure, Parking
- **Personnel :**  
Laundry supplement (1 X / per week +\$35\*), Guide supplement

### For your guidance

- **For your guidance**  
Kids welcome  
No pet allowed  
Non smoking rental, cell phone network coverage, personal transport advisable  
Water : hot/cold  
Local voltage supply : 220-240V / 50Hz



view from the bedroom

Photo album - 1



Stone-Built Residence



kitchen



view from the bedroom



Single family home

Photo album - 2



interior



bathroom



bathroom



view from the garden/park



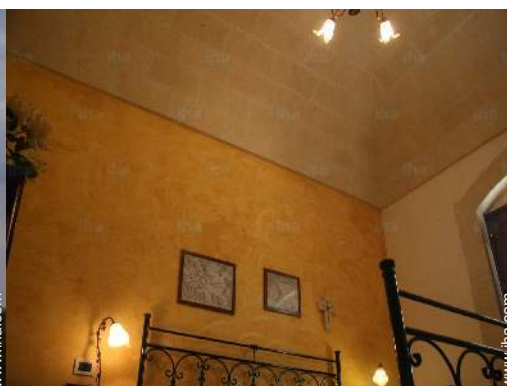
General



view from the house

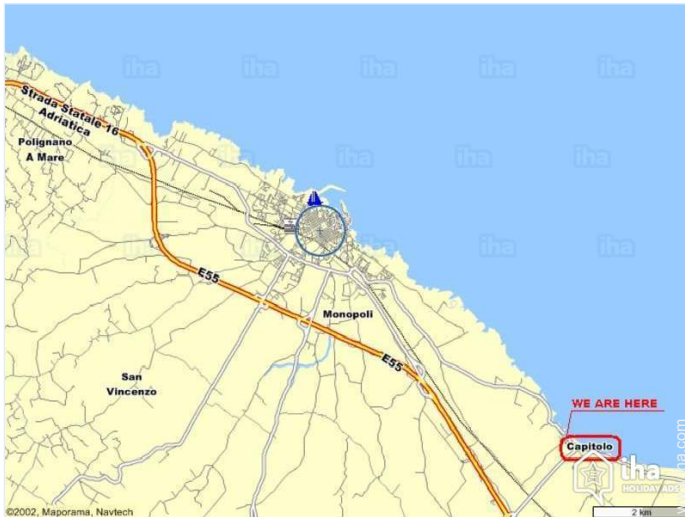


General



bedroom

## Route map



## Location & Access

" The location in the countryside of monopolies among olive groves in a quiet and pleasant but only 900 metres from sandy beaches and rocky with a beautiful blue sea! "



GPS coordinates in degrees, minutes, seconds: Latitude 40° 53'25"N - Longitude 17°21'36"E (Dwelling)

### Address

→ C. da Capitulo  
70043 Capitulo

### • Airport Bari Palese

→ Bari, Bari Province, Apulia, Italy  
→ Distance : 43,5mi.  
→ Time : 50'

- Alberobello : (15.5mi.)
- Castellana Grotte : (15.5mi.)
- Bari : (31mi.)

## Contact

Spoken languages



Location



# Vacation rental Bari Province - Apulia "Villa Pugliese"

8

[Book now](#)

## Availability calendar - from : october 2017

| Oct  | Su | M | Tu | W | Th | F | Sa | Su | M | Tu | W  | Th | F  | Sa | Su | M  | Tu | W  | Th | F  | Sa | Su | M  | Tu |    |    |    |    |    |    |    |
|------|----|---|----|---|----|---|----|----|---|----|----|----|----|----|----|----|----|----|----|----|----|----|----|----|----|----|----|----|----|----|----|
| 2017 | 1  | 2 | 3  | 4 | 5  | 6 | 7  | 8  | 9 | 10 | 11 | 12 | 13 | 14 | 15 | 16 | 17 | 18 | 19 | 20 | 21 | 22 | 23 | 24 | 25 | 26 | 27 | 28 | 29 | 30 | 31 |
|      |    |   |    |   |    |   |    |    |   |    |    |    |    |    |    |    |    |    |    |    |    |    |    |    |    |    |    |    |    |    |    |

| Nov  | W | Th | F | Sa | Su | M | Tu | W | Th | F  | Sa | Su | M  | Tu | W  | Th | F  | Sa | Su | M  | Tu | W  | Th |    |    |    |    |    |    |    |
|------|---|----|---|----|----|---|----|---|----|----|----|----|----|----|----|----|----|----|----|----|----|----|----|----|----|----|----|----|----|----|
| 2017 | 1 | 2  | 3 | 4  | 5  | 6 | 7  | 8 | 9  | 10 | 11 | 12 | 13 | 14 | 15 | 16 | 17 | 18 | 19 | 20 | 21 | 22 | 23 | 24 | 25 | 26 | 27 | 28 | 29 | 30 |
|      | - | -  | - | -  | -  | - | -  | - | -  | -  | -  | -  | -  | -  | -  | -  | -  | -  | -  | -  | -  | -  | -  | -  | -  | -  | -  | -  | -  | -  |

| Dec  | F | Sa | Su | M | Tu | W | Th | F | Sa | Su | M  | Tu | W  | Th | F  | Sa | Su | M  | Tu | W  | Th | F  | Sa | Su |    |    |    |    |    |    |    |
|------|---|----|----|---|----|---|----|---|----|----|----|----|----|----|----|----|----|----|----|----|----|----|----|----|----|----|----|----|----|----|----|
| 2017 | 1 | 2  | 3  | 4 | 5  | 6 | 7  | 8 | 9  | 10 | 11 | 12 | 13 | 14 | 15 | 16 | 17 | 18 | 19 | 20 | 21 | 22 | 23 | 24 | 25 | 26 | 27 | 28 | 29 | 30 | 31 |
|      | - | -  | -  | - | -  | - | -  | - | -  | -  | -  | -  | -  | -  | -  | -  | -  | -  | -  | -  | -  | -  | -  | -  | -  | -  | -  | -  | -  | -  |    |

| Jan  | M | Tu | W | Th | F | Sa | Su | M | Tu | W  | Th | F  | Sa | Su | M  | Tu | W  | Th | F  | Sa | Su | M  | Tu | W  |    |    |    |    |    |    |    |
|------|---|----|---|----|---|----|----|---|----|----|----|----|----|----|----|----|----|----|----|----|----|----|----|----|----|----|----|----|----|----|----|
| 2018 | 1 | 2  | 3 | 4  | 5 | 6  | 7  | 8 | 9  | 10 | 11 | 12 | 13 | 14 | 15 | 16 | 17 | 18 | 19 | 20 | 21 | 22 | 23 | 24 | 25 | 26 | 27 | 28 | 29 | 30 | 31 |
|      | - | -  | - | -  | - | -  | -  | - | -  | -  | -  | -  | -  | -  | -  | -  | -  | -  | -  | -  | -  | -  | -  | -  | -  | -  | -  | -  | -  | -  |    |

| Feb  | Th | F | Sa | Su | M | Tu | W | Th | F | Sa | Su | M  | Tu | W  | Th | F  | Sa | Su | M  | Tu | W  |    |    |    |    |    |    |    |
|------|----|---|----|----|---|----|---|----|---|----|----|----|----|----|----|----|----|----|----|----|----|----|----|----|----|----|----|----|
| 2018 | 1  | 2 | 3  | 4  | 5 | 6  | 7 | 8  | 9 | 10 | 11 | 12 | 13 | 14 | 15 | 16 | 17 | 18 | 19 | 20 | 21 | 22 | 23 | 24 | 25 | 26 | 27 | 28 |
|      | -  | - | -  | -  | - | -  | - | -  | - | -  | -  | -  | -  | -  | -  | -  | -  | -  | -  | -  | -  | -  | -  | -  | -  | -  | -  | -  |


| Mar  | Th | F | Sa | Su | M | Tu | W | Th | F | Sa | Su | M  | Tu | W  | Th | F  | Sa | Su | M  | Tu | W  | Th | F  | Sa |    |    |    |    |    |    |    |
|------|----|---|----|----|---|----|---|----|---|----|----|----|----|----|----|----|----|----|----|----|----|----|----|----|----|----|----|----|----|----|----|
| 2018 | 1  | 2 | 3  | 4  | 5 | 6  | 7 | 8  | 9 | 10 | 11 | 12 | 13 | 14 | 15 | 16 | 17 | 18 | 19 | 20 | 21 | 22 | 23 | 24 | 25 | 26 | 27 | 28 | 29 | 30 | 31 |
|      | -  | - | -  | -  | - | -  | - | -  | - | -  | -  | -  | -  | -  | -  | -  | -  | -  | -  | -  | -  | -  | -  | -  | -  | -  | -  | -  | -  | -  |    |

| Apr  | Su | M | Tu | W | Th | F | Sa | Su | M | Tu | W  | Th | F  | Sa | Su | M  | Tu | W  | Th | F  | Sa | Su | M  |    |    |    |    |    |    |    |
|------|----|---|----|---|----|---|----|----|---|----|----|----|----|----|----|----|----|----|----|----|----|----|----|----|----|----|----|----|----|----|
| 2018 | 1  | 2 | 3  | 4 | 5  | 6 | 7  | 8  | 9 | 10 | 11 | 12 | 13 | 14 | 15 | 16 | 17 | 18 | 19 | 20 | 21 | 22 | 23 | 24 | 25 | 26 | 27 | 28 | 29 | 30 |
|      | -  | - | -  | - | -  | - | -  | -  | - | -  | -  | -  | -  | -  | -  | -  | -  | -  | -  | -  | -  | -  | -  | -  | -  | -  | -  | -  | -  | -  |

| May  | Tu | W | Th | F | Sa | Su | M | Tu | W | Th | F  | Sa | Su | M  | Tu | W  | Th | F  | Sa | Su | M  | Tu | W  | Th |    |    |    |    |    |    |    |
|------|----|---|----|---|----|----|---|----|---|----|----|----|----|----|----|----|----|----|----|----|----|----|----|----|----|----|----|----|----|----|----|
| 2018 | 1  | 2 | 3  | 4 | 5  | 6  | 7 | 8  | 9 | 10 | 11 | 12 | 13 | 14 | 15 | 16 | 17 | 18 | 19 | 20 | 21 | 22 | 23 | 24 | 25 | 26 | 27 | 28 | 29 | 30 | 31 |
|      | -  | - | -  | - | -  | -  | - | -  | - | -  | -  | -  | -  | -  | -  | -  | -  | -  | -  | -  | -  | -  | -  | -  | -  | -  | -  | -  | -  | -  |    |

| June | F | Sa | Su | M | Tu | W | Th | F | Sa | Su | M  | Tu | W  | Th | F  | Sa | Su | M  | Tu | W  | Th | F  | Sa |    |    |    |    |    |    |    |
|------|---|----|----|---|----|---|----|---|----|----|----|----|----|----|----|----|----|----|----|----|----|----|----|----|----|----|----|----|----|----|
| 2018 | 1 | 2  | 3  | 4 | 5  | 6 | 7  | 8 | 9  | 10 | 11 | 12 | 13 | 14 | 15 | 16 | 17 | 18 | 19 | 20 | 21 | 22 | 23 | 24 | 25 | 26 | 27 | 28 | 29 | 30 |
|      | - | -  | -  | - | -  | - | -  | - | -  | -  | -  | -  | -  | -  | -  | -  | -  | -  | -  | -  | -  | -  | -  | -  | -  | -  | -  | -  | -  | -  |

| Jul  | Su | M | Tu | W | Th | F | Sa | Su | M | Tu | W  | Th | F  | Sa | Su | M  | Tu | W  | Th | F  | Sa | Su | M  | Tu |    |    |    |    |    |    |    |
|------|----|---|----|---|----|---|----|----|---|----|----|----|----|----|----|----|----|----|----|----|----|----|----|----|----|----|----|----|----|----|----|
| 2018 | 1  | 2 | 3  | 4 | 5  | 6 | 7  | 8  | 9 | 10 | 11 | 12 | 13 | 14 | 15 | 16 | 17 | 18 | 19 | 20 | 21 | 22 | 23 | 24 | 25 | 26 | 27 | 28 | 29 | 30 | 31 |
|      | -  | - | -  | - | -  | - | -  | -  | - | -  | -  | -  | -  | -  | -  | -  | -  | -  | -  | -  | -  | -  | -  | -  | -  | -  | -  | -  | -  | -  |    |

 Low season



Vacation rental  
Capitolo - Italy  
"Villa Pugliese"

9  
[Book now](#)

Availability calendar - from : july 2018





| Aug  | W | Th | F | Sa | Su | M | Tu | W | Th | F  | Sa | Su | M  | Tu | W  | Th | F  | Sa | Su | M  | Tu | W  | Th | F  |    |    |    |    |    |    |    |
|------|---|----|---|----|----|---|----|---|----|----|----|----|----|----|----|----|----|----|----|----|----|----|----|----|----|----|----|----|----|----|----|
| 2018 | 1 | 2  | 3 | 4  | 5  | 6 | 7  | 8 | 9  | 10 | 11 | 12 | 13 | 14 | 15 | 16 | 17 | 18 | 19 | 20 | 21 | 22 | 23 | 24 | 25 | 26 | 27 | 28 | 29 | 30 | 31 |

| Sep  | Sa | Su | M | Tu | W | Th | F | Sa | Su | M  | Tu | W  | Th | F  | Sa | Su | M  | Tu | W  | Th | F  | Sa | Su |    |    |    |    |    |    |    |
|------|----|----|---|----|---|----|---|----|----|----|----|----|----|----|----|----|----|----|----|----|----|----|----|----|----|----|----|----|----|----|
| 2018 | 1  | 2  | 3 | 4  | 5 | 6  | 7 | 8  | 9  | 10 | 11 | 12 | 13 | 14 | 15 | 16 | 17 | 18 | 19 | 20 | 21 | 22 | 23 | 24 | 25 | 26 | 27 | 28 | 29 | 30 |

 Low season

[Month : Next >>](#)

Rental rates - Stone-Built Residence - from 2 to 10 Person(s)

| Rates  | Night         | Weekend | week                 | 2 weeks               | Month   |
|--|---------------|---------|----------------------|-----------------------|---------|
|  Low season           | -             | -       | \$469*               | \$880*                | \$1407* |
|  Mid season          | \$170*<br>> 2 | -       | \$704*               | \$1232*<br>(Saturday) | \$2346* |
|  High season        | \$205*<br>> 2 | -       | \$997*<br>(Saturday) | -                     | -       |
|  Promotional period | -             | -       | \$352*               | \$704*                | \$821*  |

(Check-in day) > Minimum Night

[Book now](#)

Booking conditions

• Reservation

→ Payment made upon reservation :  
50% of rental sum  
→ Payment balance :  
3 days before the stay

• rentals

→ Service charges to be added  
→ Day tax in addition  
→ Cleaning charge levy on departure : \$53\*

[▶ Book now](#)

[▶ Contact the owner](#)

Accepted methods of payment

• International Money Order • Bank transfer (wire) • Solo • PayPal • Cash

Contact directly the property owners

[www.iha.com](http://www.iha.com)  
Advert No.  
7054  
[>> Book now <<](#)

Contact

Spoken languages



\* Converted at the rate indicated : €100 = \$117.29 = £89.59

Advert No. 7054

[www.iha.com](http://www.iha.com)

