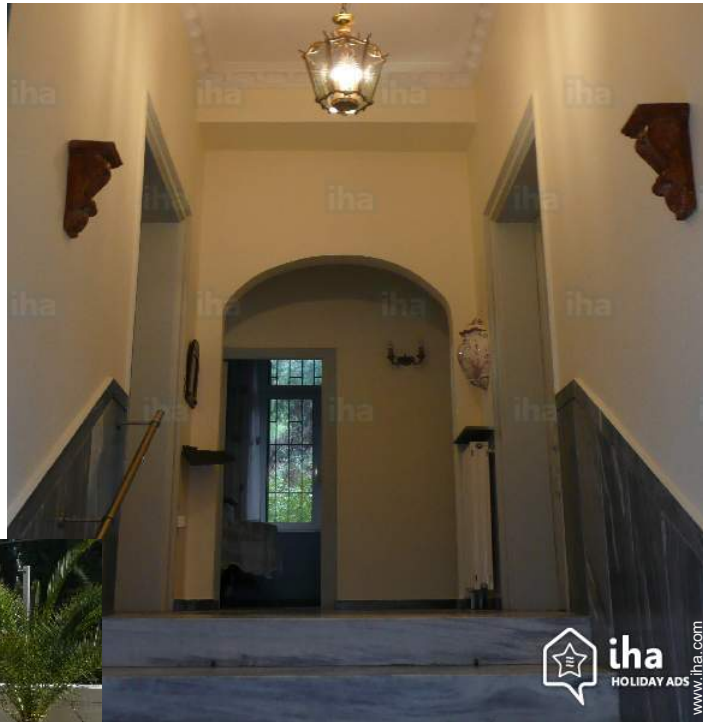


# Vacation rental Central Athens Apartment-Flat

Particular apartment-house of character



**Apartment-Flat** first floor, separate entrance, in(on) a(an) House single storey

Setting : city

Capacity : from 2 to 6 person(s)

Bedroom(s) : 4

Central Athens - Athens - Attica

Greece

Advert No. 66451

[www.iha.com](http://www.iha.com)



## Vacation rental



Apartment-Flat first floor, separate entrance, in(on) a(an) House single storey

- **Ideal for large families, group**
- **View :** garden/park, city, street/avenue
- **Setting :** city

" Our House is located in a quiet area behind the stadium where took place the first Olympic Games in 1896. It has two facades, one overlooking a park, the other on the street. We come to renovate this old House but we tried to keep its character: thus, marble is the most used material, the ceiling height is more than 4 metres and furniture are old. The terrace that can be reached by an outside staircase is particularly pleasant. There are plants and palm trees and it is possible to take his meals. "

## Surroundings & location



City



Festival



Culture

" The strong points of this House are the proximity of the main tourist centers of Athens (the old stadium, the Acropolis and its Museum, the temple of Zeus, the Arc of Adrian, the National Garden, Parliament and Plaka, the old quarter of Athens). All these sites are easily reachable on foot. In addition the House combines comfort with the character of an Athenian an old House. Moreover, this kind of House became more and more rare in Athens, as they are replaced by buildings. Finally the terrace overlooking the Park, is an added advantage. "

### Leisure

- **Leisure activities less than 12 miles :**

Bathing

- **Attractions and relaxation :**

Bar/pub, restaurant, movie theater, open air summer movie theater, park and garden, art gallery, historical site, museum, theater, festivals

### Surroundings

- **Amenities :**

Downtown 0.93mi.  
Bus stop / bus station 330'  
Subway station 0.62mi.  
Bus pick up point beach 0.3mi.  
Breadstore 330'  
Local stores 330'  
Supermarket 330'  
Hairdressing salon 165'  
Bank 330'  
Drugstore 165'  
Hospital 0.93mi.



Advert No. 66451

[www.iha.com](http://www.iha.com)





### Exterior

- **Outside accommodation :**  
Roof terrace 970 Sq.ft.
- **Outside setting :**  
Wooded park 0.62 acre
- **Outside amenities :**  
Parasol, yard seated area



### Interior

- **Receive up to :**  
from 2 to 6 person(s)
- **Liveable floor area :**  
1,300 Sq.ft.
- **Interior layout :**  
4 bedroom(s), 1 bathroom, 2 toilets, living room 215 Sq.ft., separate kitchen, dining room, dining area, laundry room
- **Sleeps - bed(s) :**  
1 full bed(s), 4 twin bed(s)
- **Guest facilities :**  
T.V., book collection, t.v points, wifi, wardrobe, cupboard, Hanging wardrobe, hair dryer, mobile cool air fan, central heating, Drapes, Double glazed, intruder alarm, fire alarm
- **Appliances :**  
Crockery/flatware, kitchen utensils, electric coffee maker, electric kettle, toaster, juicer, electric stove, electric hobs, oven, microwave oven, extractor hood, refrigerator, deep freeze, washing machine, iron, ironing board

### Services

- **washing :**  
Sheets, Towels, Linen, Beach towels, Comforter(s), Pillows
- **Single family home :**  
Cleaning on departure supplement (+\$23\*)

### For your guidance

- **For your guidance**  
Kids welcome  
No pet allowed  
Non smoking rental  
Water : hot/cold  
Local voltage supply : 220-240V / 50Hz  
Electricity supply : mains



Photo album - 1



Photo album - 2



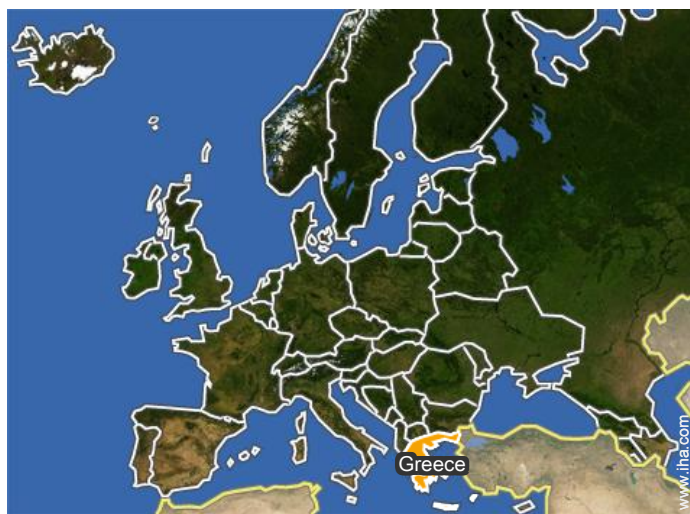
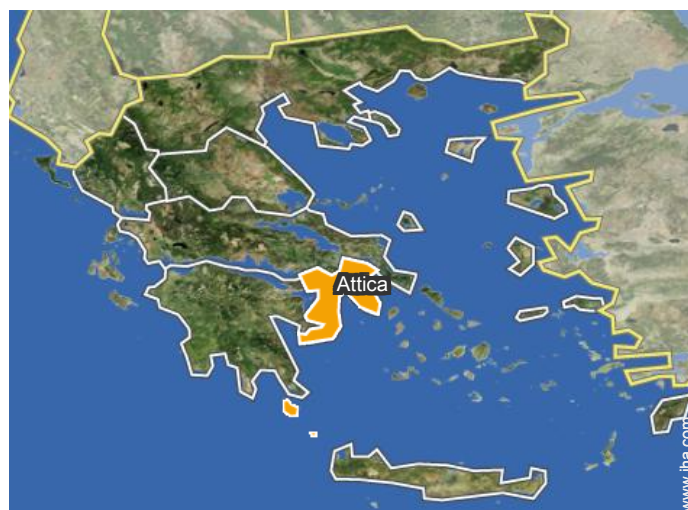
interior



Photo album - 3




### Location



### Location & Access

" Very close to the centre of Athens: foot, 8 min to go at the former Olympic Stadium, 15 min for Plaka (old quarter), 20 min for the Acropolis and its Museum. Shops, cafés and restaurants nearby. Means of transport, buses and trolleys, steps from the House. "

 GPS coordinates in degrees, minutes, seconds: Latitude 37°58'8"N - Longitude 23°44'44"E (Dwelling)

#### Address

→ 16 rue Nikosthenous  
11635 Central Athens

● [Airport Athens Elefthérios Venizélos](#)

→ Central Athens, Athens, Attica, Greece  
→ Distance : 15.5mi.

- Central Athens : (0.62mi.)
- Piraeus : (8mi.)

### Contact

Spoken languages



Vacation rental  
Athens - Attica  
**Apartment-Flat**

[Book now](#)

Availability calendar - from : august 2018

Aug	W	Th	F	Sa	Su	M	Tu	W	Th	F	Sa	Su	M	Tu	W	Th	F	Sa	Su	M	Tu	W	Th	F							
2018	1	2	3	4	5	6	7	8	9	10	11	12	13	14	15	16	17	18	19	20	21	22	23	24	25	26	27	28	29	30	31
															-	-	-	-	-	-	-	-	-	-	-	-	-	-	-	-	

Sep	Sa	Su	M	Tu	W	Th	F	Sa	Su	M	Tu	W	Th	F	Sa	Su	M	Tu	W	Th	F	Sa	Su							
2018	1	2	3	4	5	6	7	8	9	10	11	12	13	14	15	16	17	18	19	20	21	22	23	24	25	26	27	28	29	30
	-	-	-	-	-	-	-	-	-	-	-	-	-	-	-	-	-	-	-	-	-	-	-	-	-	-	-	-	-	-

Oct	M	Tu	W	Th	F	Sa	Su	M	Tu	W	Th	F	Sa	Su	M	Tu	W	Th	F	Sa	Su	M	Tu	W	Th	F					
2018	1	2	3	4	5	6	7	8	9	10	11	12	13	14	15	16	17	18	19	20	21	22	23	24	25	26	27	28	29	30	31
	-	-	-	-	-	-	-	-	-	-	-	-	-	-	-	-	-	-	-	-	-	-	-	-	-	-	-	-	-	-	

Nov	Th	F	Sa	Su	M	Tu	W	Th	F	Sa	Su	M	Tu	W	Th	F	Sa	Su	M	Tu	W	Th	F							
2018	1	2	3	4	5	6	7	8	9	10	11	12	13	14	15	16	17	18	19	20	21	22	23	24	25	26	27	28	29	30
	-	-	-	-	-	-	-	-	-	-	-	-	-	-	-	-	-	-	-	-	-	-	-	-	-	-	-	-	-	-

Dec	Sa	Su	M	Tu	W	Th	F	Sa	Su	M	Tu	W	Th	F	Sa	Su	M	Tu	W	Th	F	Sa	Su	M							
2018	1	2	3	4	5	6	7	8	9	10	11	12	13	14	15	16	17	18	19	20	21	22	23	24	25	26	27	28	29	30	31
	-	-	-	-	-	-	-	-	-	-	-	-	-	-	-	-	-	-	-	-	-	-	-	-	-	-	-	-	-	-	

Jan	Tu	W	Th	F	Sa	Su	M	Tu	W	Th	F	Sa	Su	M	Tu	W	Th	F	Sa	Su	M	Tu	W	Th							
2019	1	2	3	4	5	6	7	8	9	10	11	12	13	14	15	16	17	18	19	20	21	22	23	24	25	26	27	28	29	30	31
	-	-	-	-	-	-	-	-	-	-	-	-	-	-	-	-	-	-	-	-	-	-	-	-	-	-	-	-	-	-	

Feb	F	Sa	Su	M	Tu	W	Th	F	Sa	Su	M	Tu	W	Th	F	Sa	Su	M	Tu	W	Th							
2019	1	2	3	4	5	6	7	8	9	10	11	12	13	14	15	16	17	18	19	20	21	22	23	24	25	26	27	28
	-	-	-	-	-	-	-	-	-	-	-	-	-	-	-	-	-	-	-	-	-	-	-	-	-	-	-	-

Mar	F	Sa	Su	M	Tu	W	Th	F	Sa	Su	M	Tu	W	Th	F	Sa	Su	M	Tu	W	Th	F	Sa	Su							
2019	1	2	3	4	5	6	7	8	9	10	11	12	13	14	15	16	17	18	19	20	21	22	23	24	25	26	27	28	29	30	31
	-	-	-	-	-	-	-	-	-	-	-	-	-	-	-	-	-	-	-	-	-	-	-	-	-	-	-	-	-	-	

Apr	M	Tu	W	Th	F	Sa	Su	M	Tu	W	Th	F	Sa	Su	M	Tu	W	Th	F	Sa	Su	M	Tu							
2019	1	2	3	4	5	6	7	8	9	10	11	12	13	14	15	16	17	18	19	20	21	22	23	24	25	26	27	28	29	30
	-	-	-	-	-	-	-	-	-	-	-	-	-	-	-	-	-	-	-	-	-	-	-	-	-	-	-	-	-	-

May	W	Th	F	Sa	Su	M	Tu	W	Th	F	Sa	Su	M	Tu	W	Th	F	Sa	Su	M	Tu	W	Th	F							
2019	1	2	3	4	5	6	7	8	9	10	11	12	13	14	15	16	17	18	19	20	21	22	23	24	25	26	27	28	29	30	31
	-	-	-	-	-	-	-	-	-	-	-	-	-	-	-	-	-	-	-	-	-	-	-	-	-	-	-	-	-	-	





Vacation rental  
Central Athens - Greece  
**Apartment-Flat**

9

[Book now](#)

Availability calendar - from : may 2019

June	Sa	Su	M	Tu	W	Th	F	Sa	Su	M	Tu	W	Th	F	Sa	Su	M	Tu	W	Th	F	Sa	Su							
2019	1	2	3	4	5	6	7	8	9	10	11	12	13	14	15	16	17	18	19	20	21	22	23	24	25	26	27	28	29	30
	-	-	-	-	-	-	-	-	-	-	-	-	-	-	-	-	-	-	-	-	-	-	-	-	-	-	-	-	-	

Jul	M	Tu	W	Th	F	Sa	Su	M	Tu	W	Th	F	Sa	Su	M	Tu	W	Th	F	Sa	Su	M	Tu	W							
2019	1	2	3	4	5	6	7	8	9	10	11	12	13	14	15	16	17	18	19	20	21	22	23	24	25	26	27	28	29	30	31
	-	-	-	-	-	-	-	-	-	-	-	-	-	-	-	-	-	-	-	-	-	-	-	-	-	-	-	-	-		

[Month : Next >>](#)

Rental rates - Apartment-Flat - from 2 to 6 Person(s)

Rates	Night	Weekend	week	2 weeks	Month
 Low season	\$58* > 2	-	\$351*	-	-
 Mid season	\$58* > 2	-	-	-	-
 High season	\$64* > 2	-	-	-	-
 Festive specials	\$64* > 2	-	-	-	-
 Promotional period	\$58* > 2	-	-	-	-

> Minimum Night

[Book now](#)



### Booking conditions

- **Reservation**

→ Payment made upon reservation :  
100% of rental sum

- **rentals**

→ Cleaning charge levy on departure : \$23\*

### Accepted methods of payment

- Bank transfer (wire)

▶ [Book now](#)

▶ [Contact the owner](#)

Contact directly the property owners

[www.iha.com](http://www.iha.com)  
Advert No.  
66451  
>> [Book now](#) <<

### Contact

Spoken  
languages



\* Converted at the rate indicated : €100 = \$116.85 = £89

Advert No. 66451

[www.iha.com](http://www.iha.com)

