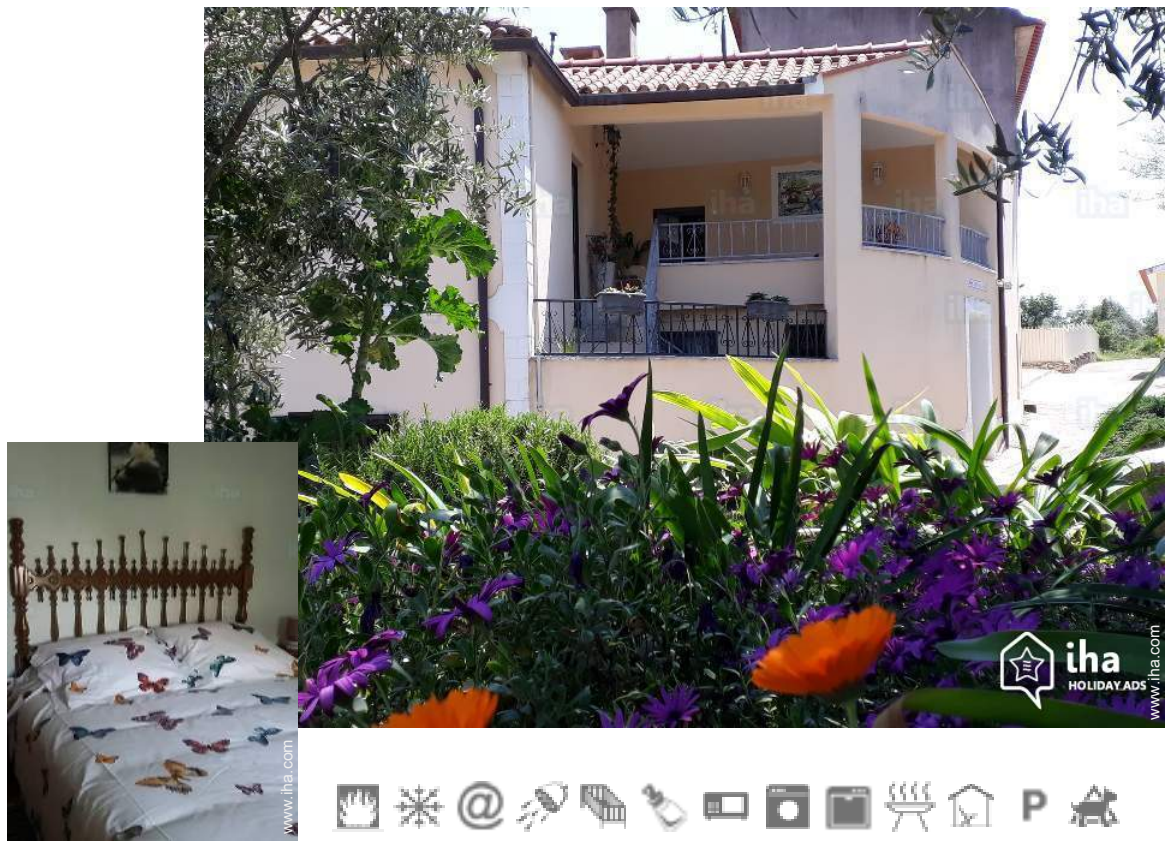


Vacation rental Chão de Couce Village House

Ideal for rest and for what like calm, vintage and nature. Our House is located on a height overlooking the Valley and on the edge of olive groves. Its not garden with olive grove, lemon



Village House, detached, 1 floor, separate entrance, in(on) a(an) Hamlet

Setting : quiet, tranquil

Capacity : from 1 to 6 person(s)

Bedroom(s) : 3

Room(s) : 5



Meublés de Tourisme

Chão de Couce - Leiria District - Centro Region (Portugal)
Portugal

Reservation : +33 (0) 672907862 (France)

Advert No. 49125

www.ih.com



Vacation rental



Village House, detached, 1 floor, separate entrance, in(on) a(an) Hamlet

- **Ideal for all age groups, family**
- **View :** panoramic, unobscured, not overlooked, country side, forest, nightlights
- **Setting :** quiet, tranquil

"The House is detached renovated but a can, in its own juice. Designed two separate night areas, it allows privacy for two couples. All comfort. All the equipment security standards. 3 bedrooms, 2 bathrooms, 3 toilets. A reversible air conditioning. These 2 covered terraces invite you a relaxation. "

Assets

- **Parking :**
Parking uncovered : off road.
- **Advantages :**
Ping-pong bats, pétanque set(s)
- **baby equipment :**
High chair, infant tub, stroller



bedroom

Surroundings & location



Countryside Horse riding Fishing Culture

" You can walk by visiting the surrounding area, walk in the forest, points of view. Cultural, religious and historical visits to beautiful villages in shale but also you swim in As Fragas de Sao Simao, Praia das Rocas, Ansião municipal pool, Aquapark of Pombal... And enjoy some good food crafts. "

Leisure

- **Leisure activities less than 12 miles :**

Bathing, pedalo, tennis, riding school, pathway/broadwalk, coastal/forest paths, hiking, rappel, mountain bike (path), hang-gliding, paragliding, hunting, acrobanch, fishing

- **Attractions and relaxation :**

Bar/pub, restaurant, movie theater, park and garden, leisure park, nature reserve, exhibition center, historical site, museum, antiques & bric-a-brac, local craftstore, cellar and wine tasting, beauticians

Surroundings

- **Locality :**

Public swimming pool
Cliff
River
Stretch of water
Lake
Forest
Mountain range

- **Amenities :**

Village center
Downtown
Car rental
Breadstore
Local stores
Supermarket
Hairdressing salon
Mail office
Bank
ATM
Drugstore
Doctor
Nurse
Hospital
Dispensary



bedroom



bedroom



bedroom

Interior

- **Receive up to :**
from 1 to 6 person(s)
- **Liveable floor area :**
1,076 Sq.ft.
- **Interior layout :**
5 Room(s), 3 bedroom(s), 2 shower room, 3 toilets, sitting room, separate kitchen, dining area, cosy nook, tv den, pantry
- **Sleeps - bed(s) :**
1 full bed(s), 1 queen-size bed(s), 2 two twin beds, 1 baby cradle
- **Guest facilities :**
Fireplace, board games, book collection, wifi, wardrobe, Hanging wardrobe, hair dryer, fully air-conditioned, mobile cool air fan, electric heating, Drapes
- **Appliances :**
Crockery/flatware, kitchen utensils, cafetiere, electric coffee maker, electric kettle, toaster, juicer, food processor, electric raclette set, gaz stove, micro-wave oven, extractor hood, refridgerator, deep freeze, dish washer, washing machine, vacuum cleaner, iron, ironing board

Exterior

- **Ground surface :**
0.25 acre.
- **Outside accommodation :**
Terrace, covered terrace
- **Outside setting :**
Yard, olive grove
- **Outside amenities :**
Summer kitchen, summer living area, BBQ, yard table(s), yard seat(s), yard seated area, chaise(s) longue(s), sun recliner(s), outside water closet facilities



shower room

Services

- **washing :**
Sheets supplement (1 X / per week +\$12*), Towels supplement (+\$12*), Linen, Comforter (s), Pillows
- **Single family home :**
Cleaning on departure supplement (+\$23*)

For your guidance

- **For your guidance**
No kids under 2 years old
Pets accepted under certain conditions (ask the owner)
Water : hot/cold
Local voltage supply : 220-240V / 50Hz
Electricity supply : mains



shower room

Photo album - 1



bedroom



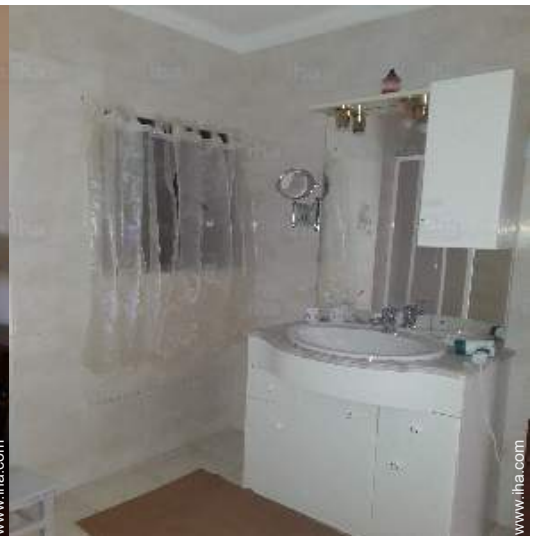
bedroom



bedroom



bedroom



shower room

Photo album - 2



shower room



tv den



sitting room



kitchen



dining area



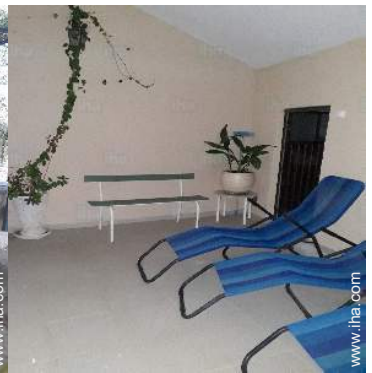
view from the terrace



summer living area



covered terrace



covered terrace

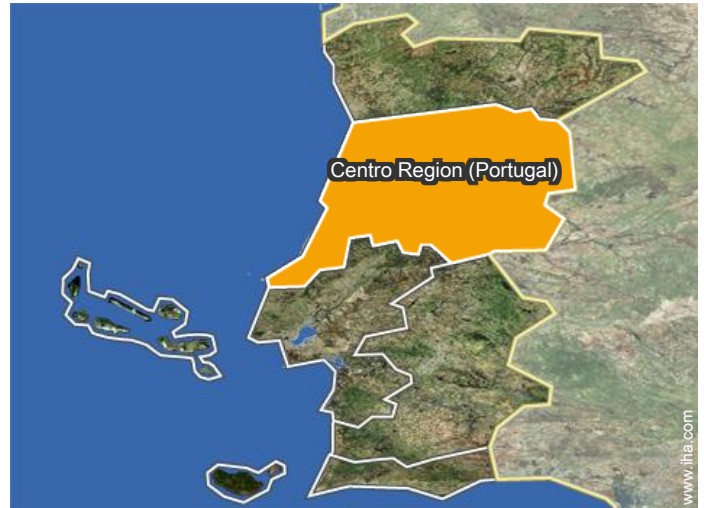
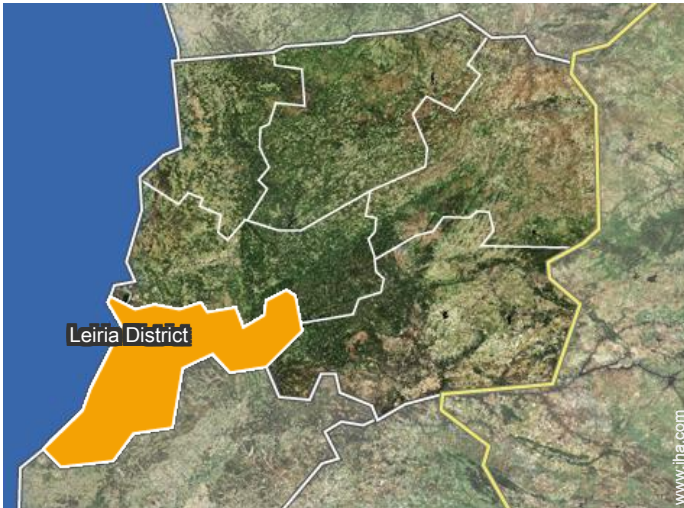


covered terrace



yard

Location



Location & Access

" In the center of Portugal, o Alto da Serra do Mouro is a small and quiet hamlet on a Summit and belonging to the municipality of Chao de Couce and the canton of Ansião. "



GPS coordinates in degrees, minutes, seconds: Latitude 39°53'43"N - Longitude 8° 23'39"W (Dwelling)

Address

→ Serra do Mouro
3240 Chão de Couce

● Freeway (exit) A13

→ Almfala de Baixo, Leiria District, Centro Region (Portugal), Portugal
→ Distance : 1.85mi.
→ Time : 10'

- Ansião : (4.5mi.)
- Figueiró dos Vinhos : (8mi.)
- Avelar : (4.5mi.)

Contact

Spoken languages



Vacation rental Chão de Couce - Portugal Village House

7
[Book now](#)

Availability calendar - from : august 2018

| Aug | W | Th | F | Sa | Su | M | Tu | W | Th | F | Sa | Su | M | Tu | W | Th | F | Sa | Su | M | Tu | W | Th | F | | | | | | | |
|------|---|----|---|----|----|---|----|---|----|----|----|----|----|----|----|----|----|----|----|----|----|----|----|----|----|----|----|----|----|----|----|
| 2018 | 1 | 2 | 3 | 4 | 5 | 6 | 7 | 8 | 9 | 10 | 11 | 12 | 13 | 14 | 15 | 16 | 17 | 18 | 19 | 20 | 21 | 22 | 23 | 24 | 25 | 26 | 27 | 28 | 29 | 30 | 31 |
| | | | | | | | | | | | | | | | | | | | | | | | | | | | | | | | |

| Sep | Sa | Su | M | Tu | W | Th | F | Sa | Su | M | Tu | W | Th | F | Sa | Su | M | Tu | W | Th | F | Sa | Su | | | | | | | |
|------|----|----|---|----|---|----|---|----|----|----|----|----|----|----|----|----|----|----|----|----|----|----|----|----|----|----|----|----|----|----|
| 2018 | 1 | 2 | 3 | 4 | 5 | 6 | 7 | 8 | 9 | 10 | 11 | 12 | 13 | 14 | 15 | 16 | 17 | 18 | 19 | 20 | 21 | 22 | 23 | 24 | 25 | 26 | 27 | 28 | 29 | 30 |
| | | | | | | | | | | | | | | | | | | | | | | | | | | | | | | |

| Oct | M | Tu | W | Th | F | Sa | Su | M | Tu | W | Th | F | Sa | Su | M | Tu | W | Th | F | Sa | Su | M | Tu | W | | | | | | | |
|------|---|----|---|----|---|----|----|---|----|----|----|----|----|----|----|----|----|----|----|----|----|----|----|----|----|----|----|----|----|----|----|
| 2018 | 1 | 2 | 3 | 4 | 5 | 6 | 7 | 8 | 9 | 10 | 11 | 12 | 13 | 14 | 15 | 16 | 17 | 18 | 19 | 20 | 21 | 22 | 23 | 24 | 25 | 26 | 27 | 28 | 29 | 30 | 31 |
| | | | | | | | | | | | | | | | | | | | | | | | | | | | | | | | |

| Nov | Th | F | Sa | Su | M | Tu | W | Th | F | Sa | Su | M | Tu | W | Th | F | Sa | Su | M | Tu | W | Th | F | | | | | | | | |
|------|----|---|----|----|---|----|---|----|---|----|----|----|----|----|----|----|----|----|----|----|----|----|----|----|----|----|----|----|----|----|--|
| 2018 | 1 | 2 | 3 | 4 | 5 | 6 | 7 | 8 | 9 | 10 | 11 | 12 | 13 | 14 | 15 | 16 | 17 | 18 | 19 | 20 | 21 | 22 | 23 | 24 | 25 | 26 | 27 | 28 | 29 | 30 | |
| | | | | | | | | | | | | | | | | | | | | | | | | | | | | | | | |

| Dec | Sa | Su | M | Tu | W | Th | F | Sa | Su | M | Tu | W | Th | F | Sa | Su | M | Tu | W | Th | F | Sa | Su | M | | | | | | | |
|------|----|----|---|----|---|----|---|----|----|----|----|----|----|----|----|----|----|----|----|----|----|----|----|----|----|----|----|----|----|----|----|
| 2018 | 1 | 2 | 3 | 4 | 5 | 6 | 7 | 8 | 9 | 10 | 11 | 12 | 13 | 14 | 15 | 16 | 17 | 18 | 19 | 20 | 21 | 22 | 23 | 24 | 25 | 26 | 27 | 28 | 29 | 30 | 31 |
| | | | | | | | | | | | | | | | | | | | | | | | | | | | | | | | |

| Jan | Tu | W | Th | F | Sa | Su | M | Tu | W | Th | F | Sa | Su | M | Tu | W | Th | F | Sa | Su | M | Tu | W | Th | | | | | | | |
|------|----|---|----|---|----|----|---|----|---|----|----|----|----|----|----|----|----|----|----|----|----|----|----|----|----|----|----|----|----|----|----|
| 2019 | 1 | 2 | 3 | 4 | 5 | 6 | 7 | 8 | 9 | 10 | 11 | 12 | 13 | 14 | 15 | 16 | 17 | 18 | 19 | 20 | 21 | 22 | 23 | 24 | 25 | 26 | 27 | 28 | 29 | 30 | 31 |
| | | | | | | | | | | | | | | | | | | | | | | | | | | | | | | | |


| Feb | F | Sa | Su | M | Tu | W | Th | F | Sa | Su | M | Tu | W | Th | F | Sa | Su | M | Tu | W | Th | | | | | | | | | |
|------|---|----|----|---|----|---|----|---|----|----|----|----|----|----|----|----|----|----|----|----|----|----|----|----|----|----|----|----|--|--|
| 2019 | 1 | 2 | 3 | 4 | 5 | 6 | 7 | 8 | 9 | 10 | 11 | 12 | 13 | 14 | 15 | 16 | 17 | 18 | 19 | 20 | 21 | 22 | 23 | 24 | 25 | 26 | 27 | 28 | | |
| | | | | | | | | | | | | | | | | | | | | | | | | | | | | | | |

| Mar | F | Sa | Su | M | Tu | W | Th | F | Sa | Su | M | Tu | W | Th | F | Sa | Su | M | Tu | W | Th | F | Sa | Su | | | | | | | |
|------|---|----|----|---|----|---|----|---|----|----|----|----|----|----|----|----|----|----|----|----|----|----|----|----|----|----|----|----|----|----|----|
| 2019 | 1 | 2 | 3 | 4 | 5 | 6 | 7 | 8 | 9 | 10 | 11 | 12 | 13 | 14 | 15 | 16 | 17 | 18 | 19 | 20 | 21 | 22 | 23 | 24 | 25 | 26 | 27 | 28 | 29 | 30 | 31 |
| | | | | | | | | | | | | | | | | | | | | | | | | | | | | | | | |

| Apr | M | Tu | W | Th | F | Sa | Su | M | Tu | W | Th | F | Sa | Su | M | Tu | W | Th | F | Sa | Su | M | Tu | | | | | | | |
|------|---|----|---|----|---|----|----|---|----|----|----|----|----|----|----|----|----|----|----|----|----|----|----|----|----|----|----|----|----|----|
| 2019 | 1 | 2 | 3 | 4 | 5 | 6 | 7 | 8 | 9 | 10 | 11 | 12 | 13 | 14 | 15 | 16 | 17 | 18 | 19 | 20 | 21 | 22 | 23 | 24 | 25 | 26 | 27 | 28 | 29 | 30 |
| | | | | | | | | | | | | | | | | | | | | | | | | | | | | | | |

| May | W | Th | F | Sa | Su | M | Tu | W | Th | F | Sa | Su | M | Tu | W | Th | F | Sa | Su | M | Tu | W | Th | F | | | | | | | |
|------|---|----|---|----|----|---|----|---|----|----|----|----|----|----|----|----|----|----|----|----|----|----|----|----|----|----|----|----|----|----|----|
| 2019 | 1 | 2 | 3 | 4 | 5 | 6 | 7 | 8 | 9 | 10 | 11 | 12 | 13 | 14 | 15 | 16 | 17 | 18 | 19 | 20 | 21 | 22 | 23 | 24 | 25 | 26 | 27 | 28 | 29 | 30 | 31 |
| | | | | | | | | | | | | | | | | | | | | | | | | | | | | | | | |

 Reserved

 Low season

Vacation rental
Leiria District - Centro Region (Portugal)
Village House


8
[Book now](#)

Availability calendar - from : may 2019

| June | Sa | Su | M | Tu | W | Th | F | Sa | Su | M | Tu | W | Th | F | Sa | Su | M | Tu | W | Th | F | Sa | Su | | | | | | | |
|------|----|----|---|----|---|----|---|----|----|----|----|----|----|----|----|----|----|----|----|----|----|----|----|----|----|----|----|----|----|----|
| 2019 | 1 | 2 | 3 | 4 | 5 | 6 | 7 | 8 | 9 | 10 | 11 | 12 | 13 | 14 | 15 | 16 | 17 | 18 | 19 | 20 | 21 | 22 | 23 | 24 | 25 | 26 | 27 | 28 | 29 | 30 |
| - | - | - | - | - | - | - | - | - | - | - | - | - | - | - | - | - | - | - | - | - | - | - | - | - | - | - | - | - | - | |


| Jul | M | Tu | W | Th | F | Sa | Su | M | Tu | W | Th | F | Sa | Su | M | Tu | W | Th | F | Sa | Su | M | Tu | W | | | | | | | |
|------|---|----|---|----|---|----|----|---|----|----|----|----|----|----|----|----|----|----|----|----|----|----|----|----|----|----|----|----|----|----|----|
| 2019 | 1 | 2 | 3 | 4 | 5 | 6 | 7 | 8 | 9 | 10 | 11 | 12 | 13 | 14 | 15 | 16 | 17 | 18 | 19 | 20 | 21 | 22 | 23 | 24 | 25 | 26 | 27 | 28 | 29 | 30 | 31 |
| - | - | - | - | - | - | - | - | - | - | - | - | - | - | - | - | - | - | - | - | - | - | - | - | - | - | - | - | - | - | - | |

 Reserved

 Low season

[Month : Next >>](#)

Rental rates - Village House - from 1 to 6 Person(s)

| Rates | Night | Weekend | week | 2 weeks | Month |
|--|-------|---------|----------------------|---------|-------|
|  Low season | - | - | \$351* (Saturday) | - | - |
|  High season | - | - | \$409* (Saturday) | - | - |

(Check-in day)

[Book now](#)

Booking conditions

• Reservation

- Payment made upon reservation : 25% of rental sum
- Payment balance : on handing over the keys
- Deposit required : \$234*

• rentals

- Service charges included
- Day tax included
- Cleaning charge levy on departure : \$23*

[▶ Book now](#)

[▶ Contact the owner](#)

Accepted methods of payment

- Check • Cash

Contact directly the property owners

www.iha.com
Advert No.
49125
[>> Book now <<](#)

Contact

Spoken languages



* Converted at the rate indicated : €100 = \$116.85 = £89

Advert No. 49125

www.iha.com

