

# Vacation rental

## Ciociaria

### "Chalet Colle Lo Zoppo"

Ideal for a quiet holiday, away from the pollution and chaos of the city. For large families, groups of friends and honeymooners in peace.



**Chalet**, attached home, single storey, separate entrance, in(on) a(an) Private property

Setting : natural, rural

Capacity : from 1 to 10 person(s)

Bedroom(s) : 3

Room(s) : 6

Colle Lo Zoppo - Frosinone Province (FR) - Latium (Lazio)  
Italy

Advert No. 52213

[www.ihaholidayads.com](http://www.ihaholidayads.com)



>> VACATION HOMES

DIRECT BY OWNERS

## Vacation rental



Chalet, attached home, single storey, separate entrance, in(on) a(an) Private property

- **Ideal for large families, all age groups**
- **View** : panoramic, not overlooked, mountain, country side, forest, fantastic sunset
- **Setting** : natural, rural
- **Exposure** : South

" In winter, the gas heating is included in the price, within the limits of reasonable consumption. If you have an amount excessively exceeding this limit, the heating will be charged in supplement, on the basis of the digital difference highlighted by the meter. "

## Assets

- **Parking** :  
Parking uncovered : 3 off road.



façade

## Surroundings & location



Mountain



Culture

" Around the cottage, glue Lo Zoppo, 1 kilometer, you can visit the remains of the beautiful Civitavecchia di Arpino, place of birth of Cicero, Marcus Tullius Cicero, one of the most important characters of any Roman antiquity. 2 km, instead, one arrives in the town of Arpino. The references in the vicinity are the restoration activities and hotels: Lo Zoppo (100 m) and the art Country Hotel & Restaurant (1 km). "

### Leisure

- **Leisure activities less than 12 miles :**

Pedalo, scuba diving, tennis, riding school, coastal/forest paths, hiking, rock climbing, mountain bike (path), horse trekking, donkey rides, rollerblade/rollerskate (circuit), skate board (ramps), ten-pin bowling, basketball, hunting, fishing

- **Attractions and relaxation :**

Restaurant, Bio farm

### Surroundings

- **Locality :**

Ski slopes 31mi.  
Ski lifts 31mi.  
Ice skating rink >31mi.  
Sea/ocean >31mi.  
Sandy beach >31mi.  
Public swimming pool 4.5mi.  
Waterfall 9mi.  
River 9mi.  
Stretch of water 12.5mi.  
Lake 12.5mi.  
Forest <165'

- **Amenities :**

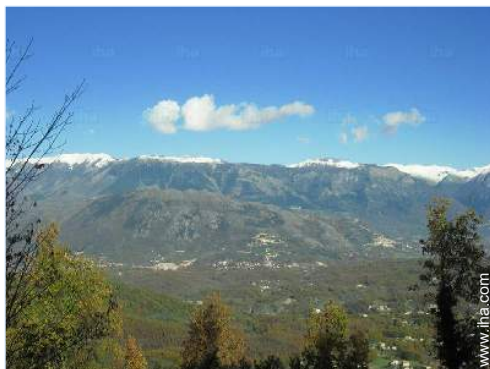
Kindergarten 9mi.  
Downtown 4.5mi.  
Bus stop / bus station 4.5mi.  
Bus pick up point beach 9mi.  
Bike/mountain bike hire 9mi.  
Scooter/motorbike hire 9mi.  
Car rental 9mi.  
Ski hire store 31mi.  
Household linens for hire/laundry services 9mi.  
Breadstore 4.5mi.  
Local stores 4.5mi.  
Supermarket 4.5mi.  
Hairdressing salon 4.5mi.  
Internet cafe 3mi.  
Mail office 4.5mi.  
Bank 4.5mi.  
Drugstore 4.5mi.  
Doctor 3mi.  
Hospital 9mi.  
Dispensary 4.5mi.



Cities close by



View from the property



panorama

## Interior

- **Receive up to :**  
from 1 to 10 person(s) (8 adults, 2 kids)
- **Liveable floor area :**  
2,150 Sq.ft.
- **Interior layout :**  
6 Room(s), 3 bedroom(s), 2 bathroom, 2 shower room, 2 toilets, typical style kitchen, dining room, dining area, cosy nook, tv den, pantry
- **Sleeps - bed(s) :**  
3 full bed(s), 2 twin bed(s), 1 bunk beds, 1 possible extra bed(s)
- **Guest facilities :**  
Fireplace, T.V., wardrobe, hair dryer, fly screens, mobile cool air fan, central heating
- **Appliances :**  
Crockery/flatware, kitchen utensils, cafetiere, meat broiler, gaz stove, oven, micro-wave oven, refridgerator, deep freeze, washing machine, iron, ironing board

## Exterior

- **Ground surface :**  
< 1,076 Sq.ft.
- **Outside accommodation :**  
Terrace 1,076 Sq.ft.
- **Outside setting :**  
Private courtyard 530 Sq.ft., yard 2,150 Sq.ft., woody 10 acres
- **Outside amenities :**  
BBQ, yard table(s), 20 yard seat(s)



twin bed(s)

## Services

- **washing :**  
Sheets, Towels, Linen, Comforter(s), Comforter(s), Pillows
- **Single family home :**  
Cleaning, Cleaning on departure, Yard/swimming pool maintenance, Snow clearance, Parking, Airport transfers supplement
- **Personnel :**  
Baby sitting supplement, Massage supplement, Guide supplement, Entertainer supplement
- **Restauration :**  
BBQ meal supplement, Locally produced meals supplement, Picnic basket supplement, Themed evening supplement

## For your guidance

- **For your guidance**  
Kids welcome  
Pets friendly  
Cell phone network coverage, personal transport advisable  
Water : hot/cold  
Local voltage supply : 220-240V / 50Hz



full bed(s)

Photo album - 1



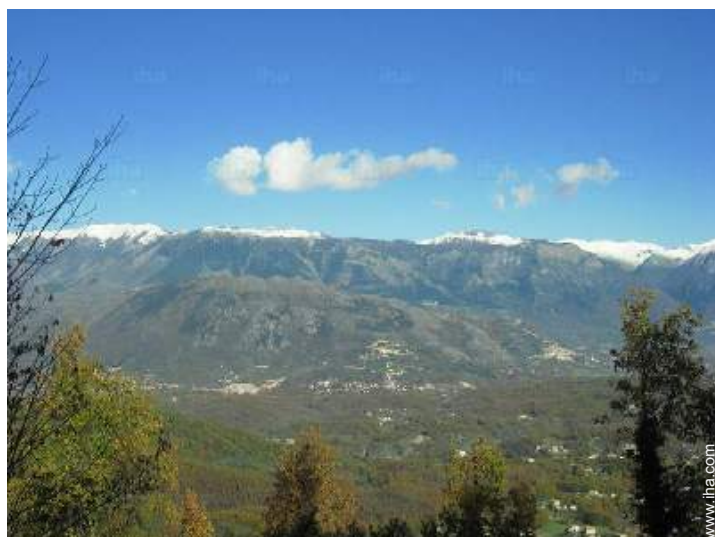
façade



View from the property



Cities close by



panorama



full bed(s)

Photo album - 2



twin bed(s)



bathroom



the decor



typical style kitchen



Kitchen Area



sitting room

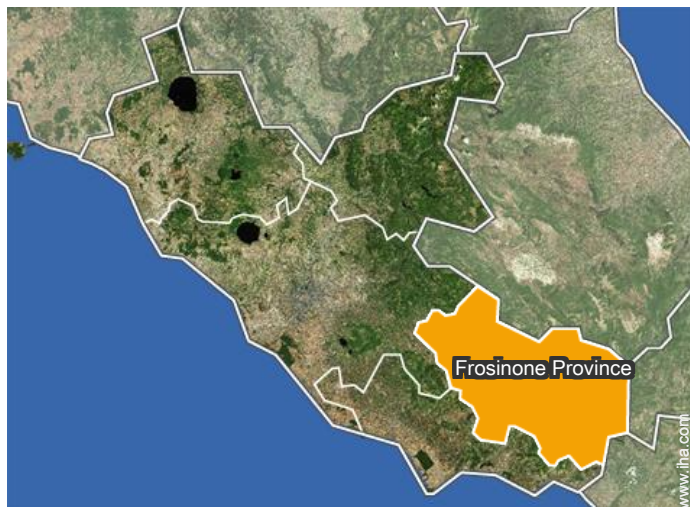


the decor



Fireplace

## Location



## Location & Access

" The cottage is a holiday home located on the tops of the hills of Arpino. "



GPS coordinates in degrees, minutes, seconds: Latitude 41°38'56.792"N - Longitude 13°32'0.917"E (Dwelling)

### Address

→  
03033 Colle Lo Zoppo

● Freeway (exit) Autostrada A1-Frosinone

→ Frosinone, Frosinone Province, Latium (Lazio), Italy

→ Distance : 21mi.

→ Time : 40'

- Arpino : (3mi.)
- Sora : (7,5mi.)
- Cassino : (15.5mi.)

## Contact

Spoken languages



# Vacation rental Latium (Lazio) - Italy "Chalet Colle Lo Zoppo"

7  
[Book now](#)

Availability calendar - from : september 2019

Sep	Su	M	Tu	W	Th	F	Sa	Su	M	Tu	W	Th	F	Sa	Su	M	Tu	W	Th	F	Sa	Su	M							
2019	1	2	3	4	5	6	7	8	9	10	11	12	13	14	15	16	17	18	19	20	21	22	23	24	25	26	27	28	29	30

Oct	Tu	W	Th	F	Sa	Su	M	Tu	W	Th	F	Sa	Su	M	Tu	W	Th	F	Sa	Su	M	Tu	W	Th							
2019	1	2	3	4	5	6	7	8	9	10	11	12	13	14	15	16	17	18	19	20	21	22	23	24	25	26	27	28	29	30	31
	-	-	-	-	-	-	-	-	-	-	-	-	-	-	-	-	-	-	-	-	-	-	-	-	-	-	-	-	-	-	

Nov	F	Sa	Su	M	Tu	W	Th	F	Sa	Su	M	Tu	W	Th	F	Sa	Su	M	Tu	W	Th	F	Sa							
2019	1	2	3	4	5	6	7	8	9	10	11	12	13	14	15	16	17	18	19	20	21	22	23	24	25	26	27	28	29	30
	-	-	-	-	-	-	-	-	-	-	-	-	-	-	-	-	-	-	-	-	-	-	-	-	-	-	-	-	-	-

Dec	Su	M	Tu	W	Th	F	Sa	Su	M	Tu	W	Th	F	Sa	Su	M	Tu	W	Th	F	Sa	Su	M	Tu							
2019	1	2	3	4	5	6	7	8	9	10	11	12	13	14	15	16	17	18	19	20	21	22	23	24	25	26	27	28	29	30	31
	-	-	-	-	-	-	-	-	-	-	-	-	-	-	-	-	-	-	-	-	-	-	-	-	-	-	-	-	-	-	

Jan	W	Th	F	Sa	Su	M	Tu	W	Th	F	Sa	Su	M	Tu	W	Th	F	Sa	Su	M	Tu	W	Th	F							
2020	1	2	3	4	5	6	7	8	9	10	11	12	13	14	15	16	17	18	19	20	21	22	23	24	25	26	27	28	29	30	31
	-	-	-	-	-	-	-	-	-	-	-	-	-	-	-	-	-	-	-	-	-	-	-	-	-	-	-	-	-	-	

Feb	Sa	Su	M	Tu	W	Th	F	Sa	Su	M	Tu	W	Th	F	Sa	Su	M	Tu	W	Th	F	Sa							
2020	1	2	3	4	5	6	7	8	9	10	11	12	13	14	15	16	17	18	19	20	21	22	23	24	25	26	27	28	29
	-	-	-	-	-	-	-	-	-	-	-	-	-	-	-	-	-	-	-	-	-	-	-	-	-	-	-	-	-

Mar	Su	M	Tu	W	Th	F	Sa	Su	M	Tu	W	Th	F	Sa	Su	M	Tu	W	Th	F	Sa	Su	M	Tu							
2020	1	2	3	4	5	6	7	8	9	10	11	12	13	14	15	16	17	18	19	20	21	22	23	24	25	26	27	28	29	30	31
	-	-	-	-	-	-	-	-	-	-	-	-	-	-	-	-	-	-	-	-	-	-	-	-	-	-	-	-	-	-	

Apr	W	Th	F	Sa	Su	M	Tu	W	Th	F	Sa	Su	M	Tu	W	Th	F	Sa	Su	M	Tu	W	Th							
2020	1	2	3	4	5	6	7	8	9	10	11	12	13	14	15	16	17	18	19	20	21	22	23	24	25	26	27	28	29	30
	-	-	-	-	-	-	-	-	-	-	-	-	-	-	-	-	-	-	-	-	-	-	-	-	-	-	-	-	-	-

May	F	Sa	Su	M	Tu	W	Th	F	Sa	Su	M	Tu	W	Th	F	Sa	Su	M	Tu	W	Th	F	Sa	Su							
2020	1	2	3	4	5	6	7	8	9	10	11	12	13	14	15	16	17	18	19	20	21	22	23	24	25	26	27	28	29	30	31
	-	-	-	-	-	-	-	-	-	-	-	-	-	-	-	-	-	-	-	-	-	-	-	-	-	-	-	-	-	-	

June	M	Tu	W	Th	F	Sa	Su	M	Tu	W	Th	F	Sa	Su	M	Tu	W	Th	F	Sa	Su	M	Tu							
2020	1	2	3	4	5	6	7	8	9	10	11	12	13	14	15	16	17	18	19	20	21	22	23	24	25	26	27	28	29	30
	-	-	-	-	-	-	-	-	-	-	-	-	-	-	-	-	-	-	-	-	-	-	-	-	-	-	-	-	-	-

■ Low season
 ■ High season
 ■ Mid season

Vacation rental  
Ciociaria - Italy  
"Chalet Colle Lo Zoppo"

8  
[Book now](#)

Availability calendar - from : june 2020

Jul	W	Th	F	Sa	Su	M	Tu	W	Th	F	Sa	Su	M	Tu	W	Th	F	Sa	Su	M	Tu	W	Th	F	Sa	Su	M	Tu	W	Th	F
2020	1	2	3	4	5	6	7	8	9	10	11	12	13	14	15	16	17	18	19	20	21	22	23	24	25	26	27	28	29	30	31
-	-	-	-	-	-	-	-	-	-	-	-	-	-	-	-	-	-	-	-	-	-	-	-	-	-	-	-	-	-	-	-

Aug	Sa	Su	M	Tu	W	Th	F	Sa	Su	M	Tu	W	Th	F	Sa	Su	M	Tu	W	Th	F	Sa	Su	M							
2020	1	2	3	4	5	6	7	8	9	10	11	12	13	14	15	16	17	18	19	20	21	22	23	24	25	26	27	28	29	30	31
-	-	-	-	-	-	-	-	-	-	-	-	-	-	-	-	-	-	-	-	-	-	-	-	-	-	-	-	-	-	-	

■ Low season ■ High season ■ Mid season

[Month : Next >>](#)

Rental rates - Chalet - from 1 to 10 Person(s)

Rates	Night	Weekend	week	2 weeks	Month
<span style="color: green;">■</span> Low season	\$110*	\$275* (Friday)	\$550*	\$1100*	\$2200*
<span style="color: blue;">■</span> Mid season	\$143*	\$385* (Friday)	\$770*	\$1540*	\$3080*
<span style="color: red;">■</span> High season	\$220*	\$605* (Friday)	\$1210*	\$2200*	\$4400*

(Check-in day)

[Book now](#)

Booking conditions

- **Reservation**  
→ Payment made upon reservation : 35% of rental sum  
→ Payment balance : on handing over the keys
- **rentals**  
→ Service charges included  
→ Cleaning charge on departure included  
→ Anticipated supplement for :  
- supplementary bed(s)  
- firewood

Accepted methods of payment

- International Money Order • Bank transfer (wire) • Cash

[▶ Book now](#)

[▶ Contact the owner](#)

Contact directly the property owners

[www.iha.com](http://www.iha.com)  
Advert No.  
52213  
[>> Book now <<](#)

Contact

Spoken languages



\* Converted at the rate indicated : €100 = \$110 = £91

Advert No. 52213

[www.iha.com](http://www.iha.com)

