

# Vacation rental

## Colmar

### "Aux Bijoux de Colmar - Le Diamant"



**Duplex Apartment** 3rd floor, separate entrance, in(on) a(an) Charming Tudor style house 3 floors

Setting : historical, condusive to shopping

Capacity : from 2 to 6 person(s)

Bedroom(s) : 2

Room(s) : 3



Clé vacances (3 keys)  
Meublés de Tourisme (3 stars)

Colmar - Upper Rhine (68) - Alsace

France

Reservation : +33 (0) 9 53 63 18 75 (France)

Advert No. 70273

www.ihaholiday.com



### Vacation rental



Duplex Apartment 3rd floor, separate entrance, in(on) a(an) Charming Tudor style house 3 floors

- **Ideal for all age groups, family**
- **View :** unobscured, city, rooftop, square, monument, pedestrianized street
- **Setting :** historical, conducive to shopping
- **Exposure :** North-west

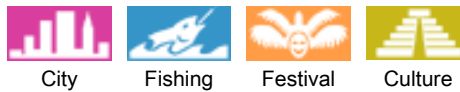
### Assets

- **Parking :**  
Covered parking : 1 closed individual place (s).
- **baby equipment :**  
High chair, comfort station, baby potty



façade

### Surroundings & location



#### Leisure

- **Leisure activities less than 12 miles :**

Cross-country skiing, ski-trekking, ice-skating, bathing, canoeing, golf, tennis, squash, riding school, pathway/broadwalk, coastal/forest paths, hiking, rappel, mountain bike (path), parachuting, paragliding, Microlights, flying (club), glider (club), horse-drawn carriage, skate board (ramps), go-karting, race track, RC modelling track, ten-pin bowling, basketball, volleyball, acrobatics, fishing, pétanque field

- **Supervised :**

Riding school

- **Attractions and relaxation :**

Bar/pub, discotheque, restaurant, movie theater, karaoke, park and garden, zoo/animal park, nature reserve, exhibition center, art gallery, historical site, museum, theater, festivals, antiques & bric-a-brac, local craftstore, cellar and wine tasting, casino, sauna, steam baths

#### Surroundings

- **Locality :**

Ski slopes 18.5mi.  
Ski lifts 25mi.  
Ice skating rink 1.5mi.  
Heated swimming pool 1.25mi.  
Public swimming pool 1.5mi.  
Public tennis court 1.85mi.  
18 hole golf course 6mi.  
River <165'  
Stretch of water 1.25mi.  
Lake 15.5mi.  
Forest 1.85mi.  
Mountain range 6mi.  
Marina 0.93mi.

- **Amenities :**

Downtown <165'  
Bus stop / bus station <165'  
Bike/mountain bike hire 0.3mi.  
Car rental 0.93mi.  
Breadstore <165'  
Caterer <165'  
Local stores <165'  
Supermarket <165'  
High class retailers <165'  
Hairdressing salon <165'  
Mail office 0.62mi.  
Bank 165'  
ATM 165'  
Drugstore 330'  
Doctor 330'  
Nurse 990'  
Hospital 1.25mi.



american style kitchen



dining room



tv den



overall view

### Interior

- **Receive up to :**  
from 2 to 6 person(s)
- **Liveable floor area :**  
860 Sq.ft.
- **Interior layout :**  
3 Room(s), 2 bedroom(s), 1 shower room, 2 toilets, living room 485 Sq.ft., american style kitchen, dining room, tv den
- **Sleeps - bed(s) :**  
1 full bed(s), 1 sleeper sofa(s) 2 pers, 2 two twin beds, 1 baby cradle, 1 possible extra bed(s)
- **Guest facilities :**  
T.V., hi-fi system, DVD player, board games, book collection, t.v points, cable/satellite, internet access, high speed internet access, wifi, wardrobe, Hanging wardrobe, hair dryer, heated towel rail, mobile cool air fan, electric heating, skylights, Drapes, Double glazed, entry phone system, digipad entry system
- **Appliances :**  
Crockery/flatware, kitchen utensils, electric coffee maker, electric kettle, toaster, juicer, electric hobs, oven, micro-wave oven, extractor hood, refridgerator, deep freeze, dish washer, washing machine, clothes dryer, iron, ironing board

### Services

- **washing :**  
Sheets, Towels, Linen, Comforter(s), Comforter(s), Pillows
- **Single family home :**  
Cleaning on departure, Parking, Airport transfers supplement

### For your guidance

- **For your guidance**  
Kids welcome  
Pets accepted under certain conditions (ask the owner)  
Non smoking rental, cell phone network coverage  
Water : hot/cold  
Local voltage supply : 220-240V / 50Hz  
Electricity supply : mains



Floor plan

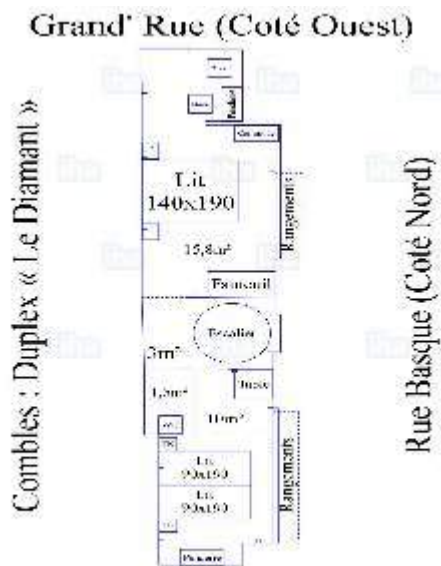
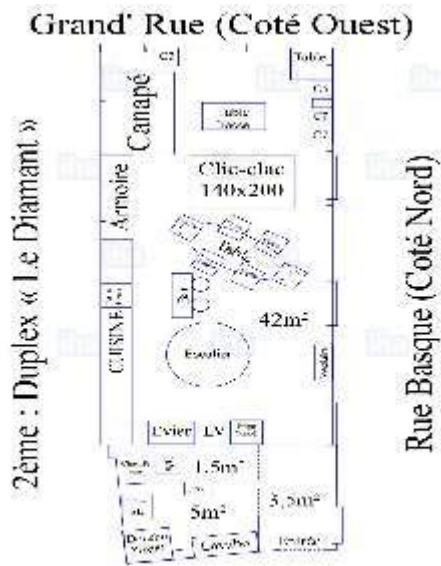


Photo album - 1



façade



dining room



american style kitchen



tv den



overall view



Photo album - 2



full bed(s)



bedroom



shower room



view from the apartment



view over a pedestrianized street

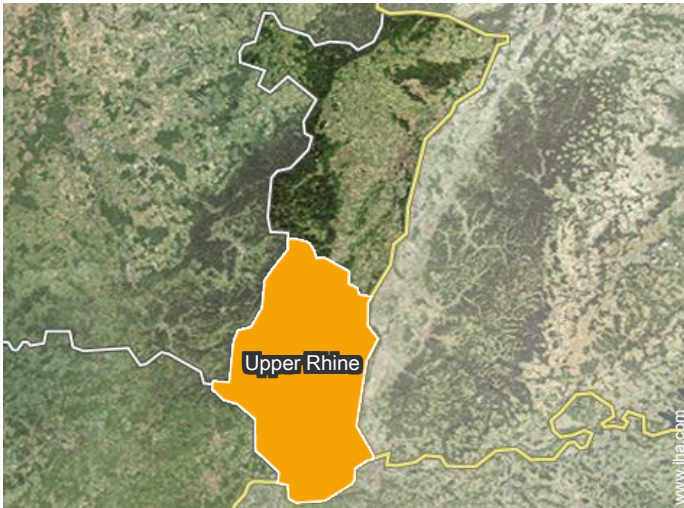


view over the square



panorama

### Location



### Location & Access



GPS coordinates in degrees, minutes, seconds: Latitude 48°4'35.238"N - Longitude 7°21'34.513"E (Dwelling)

#### Address

→ 2, rue Basque  
68000 Colmar

#### • Freeway (exit) A35 - sortie 25 (Colmar)

→ Colmar, Upper Rhine, Alsace, France  
→ Distance : 2.5mi.  
→ Time : 10'

#### • Railroad station Colmar

→ Colmar, Upper Rhine, Alsace, France  
→ Distance : 0.93mi.  
→ Time : 20'

#### • Airport Basel/Mulhouse/Freiburg

→ Mulhouse, Upper Rhine, Alsace, France  
→ Distance : 40mi.  
→ Time : 50'

• Strasbourg : (46,5mi.)

- Basel : (40mi.)
- Freiburg im Breisgau : (32,3mi.)

### Contact

Spoken languages





# Vacation rental Upper Rhine - Alsace "Aux Bijoux de Colmar - Le Diamant"

8  
[Book now](#)

Availability calendar - from : november 2017

Nov	W	Th	F	Sa	Su	M	Tu	W	Th	F	Sa	Su	M	Tu	W	Th	F	Sa	Su	M	Tu	W	Th	F	Sa	Su	M	Tu	W	Th		
2017	1	2	3	4	5	6	7	8	9	10	11	12	13	14	15	16	17	18	19	20	21	22	23	24	25	26	27	28	29	30		

Dec	F	Sa	Su	M	Tu	W	Th	F	Sa	Su	M	Tu	W	Th	F	Sa	Su	M	Tu	W	Th	F	Sa	Su	M	Tu	W	Th	F	Sa	Su		
2017	1	2	3	4	5	6	7	8	9	10	11	12	13	14	15	16	17	18	19	20	21	22	23	24	25	26	27	28	29	30	31		

Jan	M	Tu	W	Th	F	Sa	Su	M	Tu	W	Th	F	Sa	Su	M	Tu	W	Th	F	Sa	Su	M	Tu	W	Th	F	Sa	Su	M	Tu	W		
2018	1	2	3	4	5	6	7	8	9	10	11	12	13	14	15	16	17	18	19	20	21	22	23	24	25	26	27	28	29	30	31		

Feb	Th	F	Sa	Su	M	Tu	W	Th	F	Sa	Su	M	Tu	W	Th	F	Sa	Su	M	Tu	W	Th	F	Sa	Su	M	Tu	W			
2018	1	2	3	4	5	6	7	8	9	10	11	12	13	14	15	16	17	18	19	20	21	22	23	24	25	26	27	28			

Mar	Th	F	Sa	Su	M	Tu	W	Th	F	Sa	Su	M	Tu	W	Th	F	Sa	Su	M	Tu	W	Th	F	Sa	Su	M	Tu	W	Th	F	Sa		
2018	1	2	3	4	5	6	7	8	9	10	11	12	13	14	15	16	17	18	19	20	21	22	23	24	25	26	27	28	29	30	31		

Apr	Su	M	Tu	W	Th	F	Sa	Su	M	Tu	W	Th	F	Sa	Su	M	Tu	W	Th	F	Sa	Su	M	Tu	W	Th	F	Sa	Su	M		
2018	1	2	3	4	5	6	7	8	9	10	11	12	13	14	15	16	17	18	19	20	21	22	23	24	25	26	27	28	29	30		

May	Tu	W	Th	F	Sa	Su	M	Tu	W	Th	F	Sa	Su	M	Tu	W	Th	F	Sa	Su	M	Tu	W	Th	F	Sa	Su	M	Tu	W	Th		
2018	1	2	3	4	5	6	7	8	9	10	11	12	13	14	15	16	17	18	19	20	21	22	23	24	25	26	27	28	29	30	31		

June	F	Sa	Su	M	Tu	W	Th	F	Sa	Su	M	Tu	W	Th	F	Sa	Su	M	Tu	W	Th	F	Sa	Su	M	Tu	W	Th	F	Sa		
2018	1	2	3	4	5	6	7	8	9	10	11	12	13	14	15	16	17	18	19	20	21	22	23	24	25	26	27	28	29	30		


  

Jul	Su	M	Tu	W	Th	F	Sa	Su	M	Tu	W	Th	F	Sa	Su	M	Tu	W	Th	F	Sa	Su	M	Tu	W	Th	F	Sa	Su	M	Tu		
2018	1	2	3	4	5	6	7	8	9	10	11	12	13	14	15	16	17	18	19	20	21	22	23	24	25	26	27	28	29	30	31		

Aug	W	Th	F	Sa	Su	M	Tu	W	Th	F	Sa	Su	M	Tu	W	Th	F	Sa	Su	M	Tu	W	Th	F	Sa	Su	M	Tu	W	Th	F		
2018	1	2	3	4	5	6	7	8	9	10	11	12	13	14	15	16	17	18	19	20	21	22	23	24	25	26	27	28	29	30	31		

 Reserved

 Mid season



Vacation rental  
Colmar - France  
**"Aux Bijoux de Colmar - Le Diamant"**

9

[Book now](#)

Availability calendar - from : august 2018

Sep	Sa	Su	M	Tu	W	Th	F	Sa	Su	M	Tu	W	Th	F	Sa	Su	M	Tu	W	Th	F	Sa	Su	M	Tu	W	Th	F	Sa	Su
2018	1	2	3	4	5	6	7	8	9	10	11	12	13	14	15	16	17	18	19	20	21	22	23	24	25	26	27	28	29	30
-	-	-	-	-	-	-	-	-	-	-	-	-	-	-	-	-	-	-	-	-	-	-	-	-	-	-	-	-	-	-

Oct	M	Tu	W	Th	F	Sa	Su	M	Tu	W	Th	F	Sa	Su	M	Tu	W	Th	F	Sa	Su	M	Tu	W	Th	F	Sa	Su	M	Tu	W
2018	1	2	3	4	5	6	7	8	9	10	11	12	13	14	15	16	17	18	19	20	21	22	23	24	25	26	27	28	29	30	31
-	-	-	-	-	-	-	-	-	-	-	-	-	-	-	-	-	-	-	-	-	-	-	-	-	-	-	-	-	-	-	-

Reserved

Mid season

[Month : Next >>](#)

Rental rates - Duplex Apartment - from 2 to 6 Person(s)

Rates	Night	Weekend	week	2 weeks	Month
<input type="checkbox"/> Mid season	\$117* > 2	\$352*	\$821*	-	-
> Minimum Night					

[Book now](#)

Booking conditions

• Reservation

- Payment made upon reservation : 25% of rental sum
- Payment balance : on handing over the keys
- Deposit required : \$586\*

• rentals

- Service charges included
- Day tax included
- Cleaning charge on departure included

[▶ Book now](#)

[▶ Contact the owner](#)

Accepted methods of payment

- Bank transfer (wire)
- Check
- Draft
- Travellers Cheques
- Cash
- Holiday coupon

Contact directly the property owners

[www.iha.com](http://www.iha.com)  
Advert No.  
70273  
[>> Book now <<](#)

Contact

Spoken languages



\* Converted at the rate indicated : €100 = \$117.29 = £89.59

Advert No. 70273

[www.iha.com](http://www.iha.com)



[>> VACATION HOMES](#)

DIRECT BY OWNERS