

Vacation rental Comporta "Villa Marraquexe"

Modern villa with 2 floors located in Herdade Montalvo (private condo) with 600 m2 habitable. The Villa is situated in a 1 ha nature reserve wooded mostly by pine trees.



House, detached, 2 floors, separate entrance, in(on) a(an) Estate

Setting : heavenly

Capacity : from 8 to 9 person(s)

Bedroom(s) : 4

Room(s) : 6

Comporta - Setúbal Discript - Lisbon and Tagus Valley
Portugal

Advert No. 36791

www.ihaholidayads.com



Vacation rental



House, detached, 2 floors, separate entrance, in(on) a(an) Estate

- **Ideal for all age groups**
- **View :** country side, swimming pool, garden/park, courtyard
- **Setting :** heavenly
- **Exposure :** South

" With 4 large bedrooms, large living room with fully equipped kitchen. The house has air conditioning. In the outdoor area barbecue, outdoor furniture, pool and a pergola with a surrounding garden where you can enjoy nature in comfort. "

Assets

- **Swimming pool :**
Private swimming pool, rectangular (length 40', width 20'), cascading, covered, steps in, outside shower
- **Tennis :**
Shared tennis
- **Parking :**
Parking uncovered : 6 internal.
- **Advantages :**
Table football, 1 bike(s), horses and riding equipment

Benefits :
Private golf course, stable(s)

Surroundings & location



Ocean



Horse riding

" The Herdade do Montalvo is located in the nature reserve of the Sado River. Inside the condo you can enjoy a tennis court, playground, restaurant, a riding school, bike lanes that run through the estate, as well as spaces for family trips. 10 minutes from the beautiful beaches of Comporta and the reserve of the Sado Estuary where you can enjoy activities such as: birdwatching, canoeing, sailing, windsurfing and rowing along with surf and kite surfing in Praia da Comporta. In the surroundings, about 10 km, you can visit the Rice Museum dedicated to rice and see some more of the tradition of this region. We recommend also a visit to Troia about 20 minutes where you can have access to programs of Dolphin observation and bird-watching in the reserve of the Sado Estuary. "

Leisure

- **Leisure activities less than 12 miles :**
Canoeing, canyoning, golf
- **Supervised :**
Riding school
- **Attractions and relaxation :**
Restaurant, park and garden, leisure park, nature reserve

Surroundings

- **Locality :**
Sandy beach
18 hole golf course
Lake
Marina



tv den



dining room



large bedroom

Interior

- **Receive up to :**
from 8 to 9 person(s) (8 adults, 1 kids)
- **Liveable floor area :**
6,500 Sq.ft.
- **Interior layout :**
6 Room(s), 4 bedroom(s), 6 bathroom, 7 shower room, 6 toilets, living room 485 Sq. ft., separate kitchen, dining room, cosy nook, tv den, walk-in closet, reception hall
- **Sleeps - bed(s) :**
3 full bed(s), 2 queen-size bed(s), 3 twin bed(s), 2 two twin beds, 1 futon 1 pers
- **Guest facilities :**
Fireplace, T.V., hi-fi system, vcr, video games, movie collection, t.v points, phone, cable/satelite, internet access, high speed internet access, wifi, wardrobe, cupboard, hair dryer, fly screens, partly air-conditioned, skylights
- **Appliances :**
Crockery/flatware, kitchen utensils, cafetiere, electric coffee maker, electric espresso coffee maker, electric kettle, toaster, juicer, food processor, gaz stove, oven, micro-wave oven, extractor hood, refridgerator, deep freeze, dish washer, vacuum cleaner, iron, ironing board

Exterior

- **Ground surface :**
2.5 acres
- **Outside accommodation :**
Pergola
- **Outside setting :**
Private courtyard, enclosed grounds, landscaped yard, lawn, wooded park, pinewood, orchard
- **Outside amenities :**
BBQ, 10 yard seat(s), yard seated area, 10 chaise(s) longue(s), outside shower facilities



guest bedroom

Services

- **washing :**
Sheets (1 X / per week), Towels (1 X / per week), Linen, Beach towels, Comforter(s), Comforter(s), Pillows
- **Single family home :**
Cleaning (1 X / per week), Cleaning on departure, Yard/swimming pool maintenance, Caretaker/concierge

For your guidance

- **For your guidance**
Kids welcome
Pets friendly
Present on site : equine animals
Cell phone network coverage, personal transport advisable
Water : hot/cold
Local voltage supply : 110-120V / 60Hz



large bedroom

Photo album - 1



dining room



tv den



large bedroom



large bedroom



guest bedroom

Photo album - 2



guest bedroom



pergola



pergola



Outside setting



Outside setting



outside



outside



Ocean

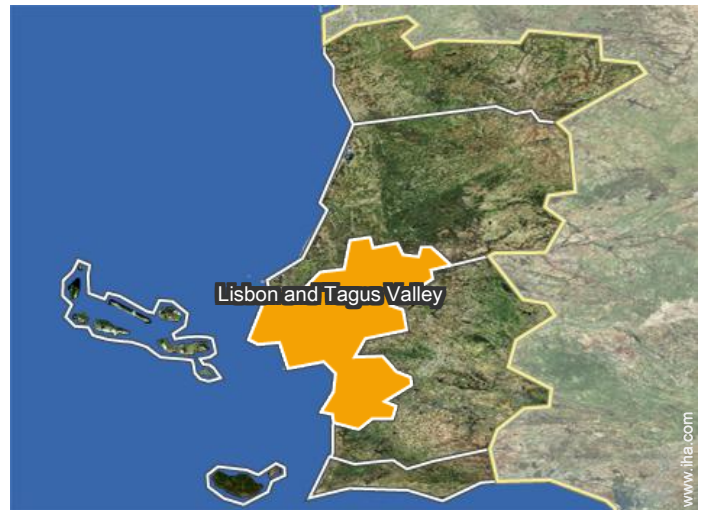
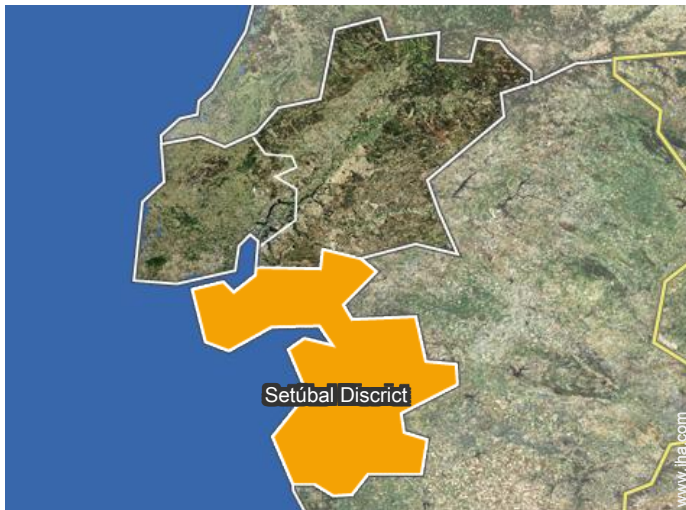


canyoning



canyoning

Location



Location & Access

" The villa is located in Herdade de Montalvo. Located at 14.8 km (14 minutes) of Alcacer do Sal and 15.9 km (13 minutes) from Comporta. Easy access. "



GPS coordinates in degrees, minutes, seconds: Latitude 38°23'31"N - Longitude 8°38'11"W (Dwelling)

Address

→ Herdade Montalvo, 93
Estrada Nacional 253, Km 14.7
7580 Comporta

• Freeway (exit) E1

→ Alcácer do Sal, Setúbal District, Lisbon
and Tagus Valley, Portugal

→ Distance : 7mi.

→ Time : 10'

• Airport Lisbon Portela

→ Lisbon, Lisbon District, Lisbon and
Tagus Valley, Portugal

→ Distance : 62mi.

→ Time : 1h

- Comporta : (6mi.)
- Alcácer do Sal : (9mi.)

Contact

Spoken
languages



Vacation rental Comporta - Portugal "Villa Marraquexe"

7
[Book now](#)

Availability calendar - from : december 2018

Dec	Sa	Su	M	Tu	W	Th	F	Sa	Su	M	Tu	W	Th	F	Sa	Su	M	Tu	W	Th	F	Sa	Su	M							
2018	1	2	3	4	5	6	7	8	9	10	11	12	13	14	15	16	17	18	19	20	21	22	23	24	25	26	27	28	29	30	31

Jan	Tu	W	Th	F	Sa	Su	M	Tu	W	Th	F	Sa	Su	M	Tu	W	Th	F	Sa	Su	M	Tu	W	Th	F	Sa	Su	M	Tu	W	Th
2019	1	2	3	4	5	6	7	8	9	10	11	12	13	14	15	16	17	18	19	20	21	22	23	24	25	26	27	28	29	30	31

Feb	F	Sa	Su	M	Tu	W	Th	F	Sa	Su	M	Tu	W	Th	F	Sa	Su	M	Tu	W	Th							
2019	1	2	3	4	5	6	7	8	9	10	11	12	13	14	15	16	17	18	19	20	21	22	23	24	25	26	27	28

Mar	F	Sa	Su	M	Tu	W	Th	F	Sa	Su	M	Tu	W	Th	F	Sa	Su	M	Tu	W	Th	F	Sa	Su							
2019	1	2	3	4	5	6	7	8	9	10	11	12	13	14	15	16	17	18	19	20	21	22	23	24	25	26	27	28	29	30	31

Apr	M	Tu	W	Th	F	Sa	Su	M	Tu	W	Th	F	Sa	Su	M	Tu	W	Th	F	Sa	Su	M	Tu	W	Th	F	Sa	Su	M	Tu
2019	1	2	3	4	5	6	7	8	9	10	11	12	13	14	15	16	17	18	19	20	21	22	23	24	25	26	27	28	29	30

May	W	Th	F	Sa	Su	M	Tu	W	Th	F	Sa	Su	M	Tu	W	Th	F	Sa	Su	M	Tu	W	Th	F	Sa	Su	M	Tu	W	Th	F
2019	1	2	3	4	5	6	7	8	9	10	11	12	13	14	15	16	17	18	19	20	21	22	23	24	25	26	27	28	29	30	31

June	Sa	Su	M	Tu	W	Th	F	Sa	Su	M	Tu	W	Th	F	Sa	Su	M	Tu	W	Th	F	Sa	Su							
2019	1	2	3	4	5	6	7	8	9	10	11	12	13	14	15	16	17	18	19	20	21	22	23	24	25	26	27	28	29	30

Jul	M	Tu	W	Th	F	Sa	Su	M	Tu	W	Th	F	Sa	Su	M	Tu	W	Th	F	Sa	Su	M	Tu	W	Th	F	Sa	Su	M	Tu	W
2019	1	2	3	4	5	6	7	8	9	10	11	12	13	14	15	16	17	18	19	20	21	22	23	24	25	26	27	28	29	30	31

Aug	Th	F	Sa	Su	M	Tu	W	Th	F	Sa	Su	M	Tu	W	Th	F	Sa	Su	M	Tu	W	Th	F	Sa	Su	M	Tu	W	Th	F	Sa
2019	1	2	3	4	5	6	7	8	9	10	11	12	13	14	15	16	17	18	19	20	21	22	23	24	25	26	27	28	29	30	31

Sep	Su	M	Tu	W	Th	F	Sa	Su	M	Tu	W	Th	F	Sa	Su	M	Tu	W	Th	F	Sa	Su	M							
2019	1	2	3	4	5	6	7	8	9	10	11	12	13	14	15	16	17	18	19	20	21	22	23	24	25	26	27	28	29	30

- Low season
- High season
- Mid season
- Festive specials
- Reserved



Vacation rental
Setúbal Discript - Lisbon and Tagus Valley
"Villa Marraquexe"

8
[Book now](#)

Availability calendar - from : september 2019

Oct	Tu	W	Th	F	Sa	Su	M	Tu	W	Th	F	Sa	Su	M	Tu	W	Th	F	Sa	Su	M	Tu	W	Th	F	Sa	Su	M	Tu	W	Th
2019	1	2	3	4	5	6	7	8	9	10	11	12	13	14	15	16	17	18	19	20	21	22	23	24	25	26	27	28	29	30	31
	-	-	-	-	-	-	-	-	-	-	-	-	-	-	-	-	-	-	-	-	-	-	-	-	-	-	-	-	-	-	-

Nov	F	Sa	Su	M	Tu	W	Th	F	Sa	Su	M	Tu	W	Th	F	Sa	Su	M	Tu	W	Th	F	Sa							
2019	1	2	3	4	5	6	7	8	9	10	11	12	13	14	15	16	17	18	19	20	21	22	23	24	25	26	27	28	29	30
	-	-	-	-	-	-	-	-	-	-	-	-	-	-	-	-	-	-	-	-	-	-	-	-	-	-	-	-	-	-

- Low season
- High season
- Mid season
- Festive specials
- Reserved

[Month : Next >>](#)

Rental rates - House - from 8 to 9 Person(s)

Rates	Night	Weekend	week	2 weeks	Month
 Low season	\$351* (Saturday) > 7	-	\$2454* (Saturday)	-	-
 Mid season	-	-	\$2740* (Saturday)	-	-
 High season	\$467* (Saturday) > 7	-	\$3272* (Saturday)	-	-
 Festive specials	\$467* (Saturday) > 7	-	\$3272* (Saturday)	-	-

(Check-in day) > Minimum Night

[Book now](#)



large bedroom



large bedroom



guest bedroom



dining room



tv den

Booking conditions

• Reservation

- Payment made upon reservation : 30% of rental sum
- Payment balance : 2 weeks before the stay

• rentals

- Service charges included
- Day tax included
- Cleaning charge on departure included

Accepted methods of payment

- Visa/Delta/Electron • Bank transfer (wire)

[▶ Book now](#)

[▶ Contact the owner](#)

Contact directly the property owners

www.ihacom.com
Advert No.
36791
[>> Book now <<](#)

Contact

Spoken languages



* Converted at the rate indicated : €100 = \$116.85 = £89

Advert No. 36791

www.ihacom.com

