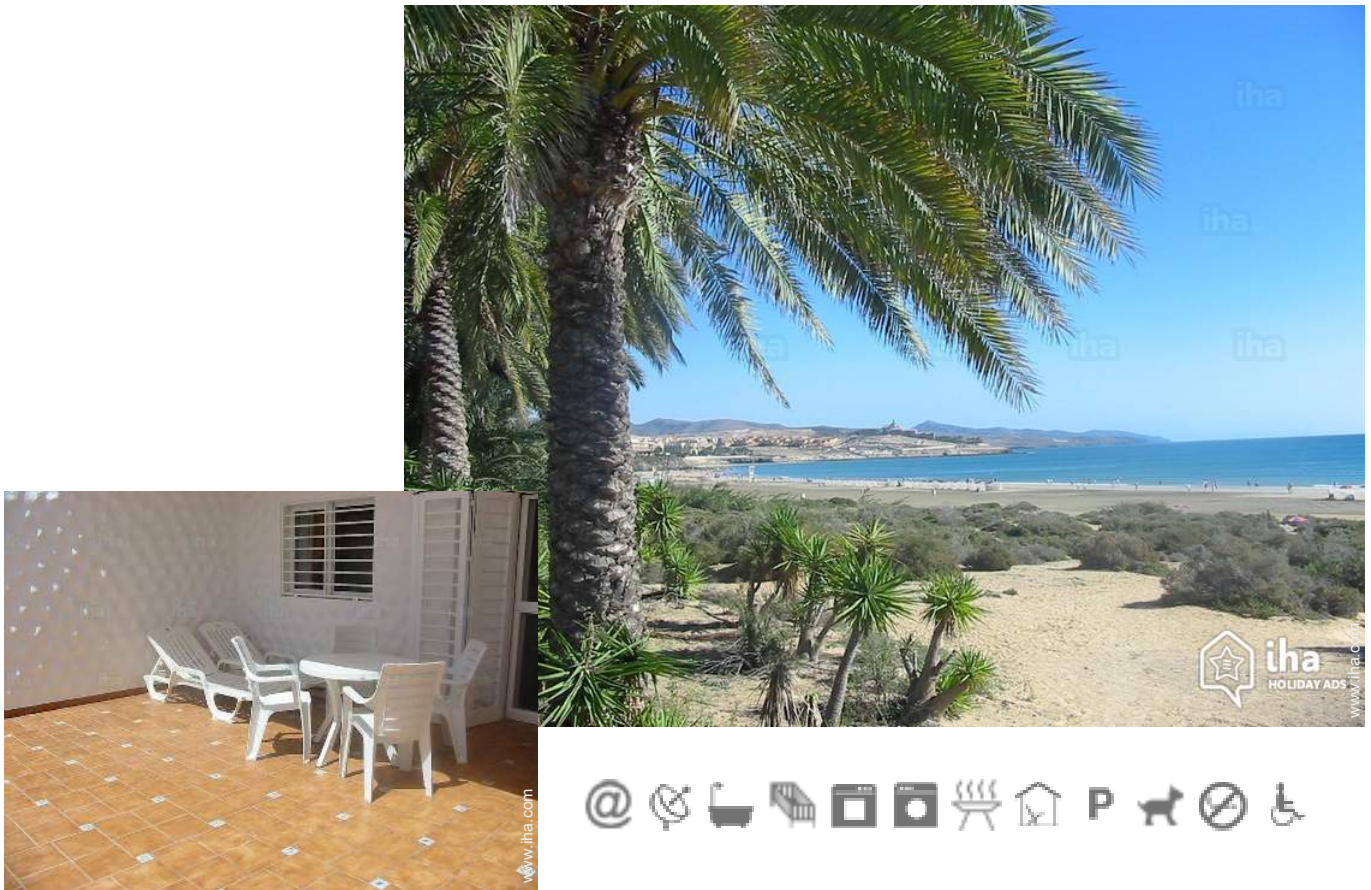


# Vacation rental Costa Calma "Solymar Jasmin"

Bungalow near the sea, 100 metres from the beach, with terrace of 25 metres. WIFI



**Bungalow**, detached, single storey, separate entrance, in(on) a(an) Charming Property

Setting : quiet, pleasant

Capacity : from 1 to 5 person(s)

Bedroom(s) : 2

Costa Calma - Fuerteventura - Las Palmas Province  
Canary Islands

Advert No. 51259

[www.ihaholidayads.com](http://www.ihaholidayads.com)



## Vacation rental



Bungalow, detached, single storey, separate entrance, in(on) a(an) Charming Property

• **Ideal for all age groups, large families**

• **View** : panoramic, mountain, garden/park, forest

• **Setting** : quiet, pleasant

" Apartment, 3-5 people, very bright, located in a nice and quiet residential area less than 100 meters from the beach with blue flag of the European Community. Together a vast Palm Grove and adjacent supermarkets, malls, bus/bus, banks, restaurants, pubs, disco, etc. Recently renovated, WIFI/WLAN, new furniture, mosquito nets, sofa bed, kitchenware and household linen, household appliances (TV with national and international channels, radio, washing machine, fridge, ceramic hob, oven, coffee maker, Toaster, juicer, iron, mixer glass, wedge, and others). It has a 25 m terrace completely equipped (hammocks, drying rack, terrace furniture, garden). Private parking. In the area you can practice all kinds of water sports. Residential area to relax and enjoy the Sun, beaches of fine sand and crystal clear water. Perfect to enjoy the best holidays. "

## Assets

• **Parking** :

Parking uncovered : internal.

## Surroundings & location



Ocean



Fishing

" In the area you can practice all kinds of water sports. Quiet location close to the beach and all services needed to enjoy a wonderful holiday. "

### Leisure

• **Leisure activities less than 12 miles** :

Bathing, pedalo, snorkelling, scuba diving, Scuba diving (Standard diving dress), banana boat, water skiing, jet ski, surfing, windsurfing, sailing, kite surfing, canoeing, golf, tennis, pathway/broadwalk, boat trips, horse trekking, go-karting, fishing

• **Supervised** :

Dive school, tennis school

### Surroundings

• **Locality** :

Sandy beach 330'  
Forest <165'



dining area



terrace



sitting room

### Interior

- **Receive up to :**  
from 1 to 5 person(s) (5 adults)
- **Liveable floor area :**  
860 Sq.ft.
- **Interior layout :**  
2 bedroom(s), 1 bathroom, living room, sitting room, american style kitchen, dining area
- **Sleeps - bed(s) :**  
1 sleeper sofa(s) 2 pers, 3 twin bed(s), 1 baby cradle
- **Guest facilities :**  
T.V., book collection, t.v points, cable/satelite, internet access, wifi, wardrobe, cupboard, Hanging wardrobe, radio alarmclock, fly screens, Glazed in area, Drapes
- **Appliances :**  
Crockery/flatware, kitchen utensils, electric coffee maker, toaster, juicer, electric stove, oven, extractor hood, refridgerator, washing machine, iron

### Exterior

- **Outside accommodation :**  
Terrace 270 Sq.ft., covered terrace 130 Sq.ft.
- **Outside setting :**  
Tropical garden, pinewood, palm grove
- **Outside amenities :**  
BBQ, yard table(s), 4 yard seat(s), 2 sun recliner(s), outside shower facilities



sitting room

### Services

- **Single family home :**  
Cleaning supplement (+\$55\*), Parking, Airport transfers supplement (+\$55\*)

### For your guidance

- **For your guidance**  
Kids welcome  
Pets friendly  
Non smoking rental, cell phone network coverage  
Water : hot/cold  
Local voltage supply : 220-240V / 50Hz  
Electricity supply : mains
- **Handicapped people welcome**  
Wheelchair access  
Fitted out for the disabled : mobility



dining area

Photo album - 1



terrace



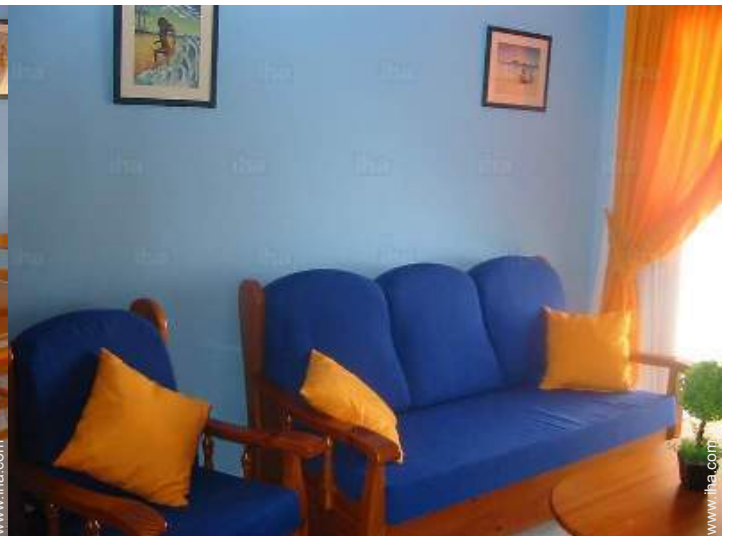
dining area



sitting room



dining area



sitting room

Photo album - 2



master bedroom

Kitchen Area

sitting room



master bedroom

sitting room

terrace



Bungalow

Bungalow

Charming Property

Photo album - 3



façade



façade



façade



tropical garden



sandy beach



tropical garden



sandy beach



sandy beach



sandy beach



sandy beach

Route map



Location & Access

" Situated in Costa Calma (Fuerteventura), with private parking, for convenience. "



GPS coordinates in degrees, minutes, seconds: Latitude 28° 9'34"N - Longitude 14° 13'47"W ([Dwelling](#))

Address

→ Av. Jahn Reisen 15  
35627 Costa Calma

• [Airport Fuerteventura](#)

→ Puerto del Rosario, Fuerteventura, Las Palmas Province, Canary Islands  
→ Distance : 40mi.

Contact

Spoken languages

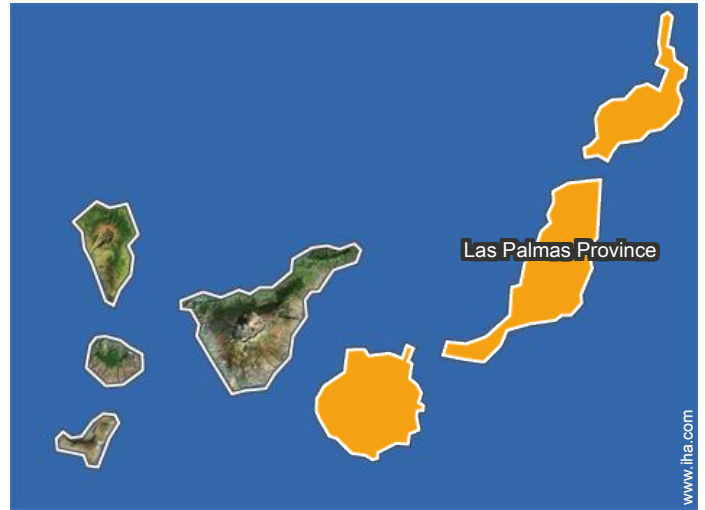


Vacation rental  
Fuerteventura - Las Palmas Province  
**"Solymar Jasmin"**

8

[Book now](#)

Location





Vacation rental  
Costa Calma - Canary Islands  
"Solymar Jasmin"

[Book now](#)

Availability calendar - from : september 2020

Sep	Tu	W	Th	F	Sa	Su	M	Tu	W	Th	F	Sa	Su	M	Tu	W	Th	F	Sa	Su	M	Tu	W							
2020	1	2	3	4	5	6	7	8	9	10	11	12	13	14	15	16	17	18	19	20	21	22	23	24	25	26	27	28	29	30

Oct	Th	F	Sa	Su	M	Tu	W	Th	F	Sa	Su	M	Tu	W	Th	F	Sa	Su	M	Tu	W	Th	F	Sa	Su	M	Tu	W	Th	F	Sa
2020	1	2	3	4	5	6	7	8	9	10	11	12	13	14	15	16	17	18	19	20	21	22	23	24	25	26	27	28	29	30	31
	-	-	-	-	-	-	-	-	-	-	-	-	-	-	-	-	-	-	-	-	-	-	-	-	-	-	-	-	-	-	-

Nov	Su	M	Tu	W	Th	F	Sa	Su	M	Tu	W	Th	F	Sa	Su	M	Tu	W	Th	F	Sa	Su	M	Tu	W	Th	F	Sa	Su	M
2020	1	2	3	4	5	6	7	8	9	10	11	12	13	14	15	16	17	18	19	20	21	22	23	24	25	26	27	28	29	30
	-	-	-	-	-	-	-	-	-	-	-	-	-	-	-	-	-	-	-	-	-	-	-	-	-	-	-	-	-	-

Dec	Tu	W	Th	F	Sa	Su	M	Tu	W	Th	F	Sa	Su	M	Tu	W	Th	F	Sa	Su	M	Tu	W	Th	F	Sa	Su	M	Tu	W	Th
2020	1	2	3	4	5	6	7	8	9	10	11	12	13	14	15	16	17	18	19	20	21	22	23	24	25	26	27	28	29	30	31
	-	-	-	-	-	-	-	-	-	-	-	-	-	-	-	-	-	-	-	-	-	-	-	-	-	-	-	-	-	-	-

Jan	F	Sa	Su	M	Tu	W	Th	F	Sa	Su	M	Tu	W	Th	F	Sa	Su	M	Tu	W	Th	F	Sa	Su	M	Tu	W	Th	F	Sa	Su
2021	1	2	3	4	5	6	7	8	9	10	11	12	13	14	15	16	17	18	19	20	21	22	23	24	25	26	27	28	29	30	31
	-	-	-	-	-	-	-	-	-	-	-	-	-	-	-	-	-	-	-	-	-	-	-	-	-	-	-	-	-	-	-

Feb	M	Tu	W	Th	F	Sa	Su	M	Tu	W	Th	F	Sa	Su	M	Tu	W	Th	F	Sa	Su	M	Tu	W	Th	F	Sa	Su	
2021	1	2	3	4	5	6	7	8	9	10	11	12	13	14	15	16	17	18	19	20	21	22	23	24	25	26	27	28	
	-	-	-	-	-	-	-	-	-	-	-	-	-	-	-	-	-	-	-	-	-	-	-	-	-	-	-	-	-

Mar	M	Tu	W	Th	F	Sa	Su	M	Tu	W	Th	F	Sa	Su	M	Tu	W	Th	F	Sa	Su	M	Tu	W	Th	F	Sa	Su	M	Tu	W
2021	1	2	3	4	5	6	7	8	9	10	11	12	13	14	15	16	17	18	19	20	21	22	23	24	25	26	27	28	29	30	31
	-	-	-	-	-	-	-	-	-	-	-	-	-	-	-	-	-	-	-	-	-	-	-	-	-	-	-	-	-	-	

Apr	Th	F	Sa	Su	M	Tu	W	Th	F	Sa	Su	M	Tu	W	Th	F	Sa	Su	M	Tu	W	Th	F	Sa	Su	M	Tu	W	Th	F
2021	1	2	3	4	5	6	7	8	9	10	11	12	13	14	15	16	17	18	19	20	21	22	23	24	25	26	27	28	29	30
	-	-	-	-	-	-	-	-	-	-	-	-	-	-	-	-	-	-	-	-	-	-	-	-	-	-	-	-	-	-

May	Sa	Su	M	Tu	W	Th	F	Sa	Su	M	Tu	W	Th	F	Sa	Su	M	Tu	W	Th	F	Sa	Su	M	Tu	W	Th	F	Sa	Su	M
2021	1	2	3	4	5	6	7	8	9	10	11	12	13	14	15	16	17	18	19	20	21	22	23	24	25	26	27	28	29	30	31
	-	-	-	-	-	-	-	-	-	-	-	-	-	-	-	-	-	-	-	-	-	-	-	-	-	-	-	-	-	-	

June	Tu	W	Th	F	Sa	Su	M	Tu	W	Th	F	Sa	Su	M	Tu	W	Th	F	Sa	Su	M	Tu	W	Th	F	Sa	Su	M	Tu	W
2021	1	2	3	4	5	6	7	8	9	10	11	12	13	14	15	16	17	18	19	20	21	22	23	24	25	26	27	28	29	30
	-	-	-	-	-	-	-	-	-	-	-	-	-	-	-	-	-	-	-	-	-	-	-	-	-	-	-	-	-	-



Vacation rental  
Las Palmas Province - Costa Calma  
"Solymar Jasmin"

10  
[Book now](#)

Availability calendar - from : june 2021

Jul	Th	F	Sa	Su	M	Tu	W	Th	F	Sa	Su	M	Tu	W	Th	F	Sa	Su	M	Tu	W	Th	F	Sa	Su	M	Tu	W	Th	F	Sa
2021	1	2	3	4	5	6	7	8	9	10	11	12	13	14	15	16	17	18	19	20	21	22	23	24	25	26	27	28	29	30	31
-	-	-	-	-	-	-	-	-	-	-	-	-	-	-	-	-	-	-	-	-	-	-	-	-	-	-	-	-	-	-	-

Aug	Su	M	Tu	W	Th	F	Sa	Su	M	Tu	W	Th	F	Sa	Su	M	Tu	W	Th	F	Sa	Su	M	Tu	W	Th	F	Sa	Su	M	Tu
2021	1	2	3	4	5	6	7	8	9	10	11	12	13	14	15	16	17	18	19	20	21	22	23	24	25	26	27	28	29	30	31
-	-	-	-	-	-	-	-	-	-	-	-	-	-	-	-	-	-	-	-	-	-	-	-	-	-	-	-	-	-	-	-

[Month : Next >>](#)

Rental rates - Bungalow - from 1 to 5 Person(s)

Rates	Night	Weekend	week	2 weeks	Month
<span style="color: blue;">■</span> Mid season	\$72* > 2	-	\$501*	\$901*	\$1716*
<span style="color: orange;">■</span> High season	\$92* > 2	-	\$647*	\$1164*	\$2218*

> Minimum Night

[Book now](#)

Booking conditions

• Reservation

→ Payment made upon reservation : 25% of rental sum

• rentals

→ Cleaning charge levy on departure : \$55\*

Accepted methods of payment

• International Money Order • Bank transfer (wire) • Cash

[▶ Book now](#)

[▶ Contact the owner](#)

Contact directly the property owners

[www.iha.com](http://www.iha.com)  
Advert No.  
51259  
[>> Book now <<](#)

Contact

Spoken languages



\* Converted at the rate indicated : €100 = \$110 = £91

Advert No. 51259

[www.iha.com](http://www.iha.com)



[>> VACATION HOMES](#)

DIRECT BY OWNERS