

Vacation rental Costa Calma "Solymar Jasmin A8"

Penthouse/apartment in the best area of Costa Calma, with large terrace overlooking the sea. -WIFI



Apartment-Flat top floor, separate entrance, in(on) a(an) Charming Bungalow 1 floor

Setting : tranquil, suitable for a relaxing break

Capacity : from 1 to 4 person(s)

Bedroom(s) : 1

Room(s) : 1

Costa Calma - Fuerteventura - Las Palmas Province
Canary Islands

Advert No. 37402

www.iha.com



Vacation rental



Apartment-Flat top floor, separate entrance, in(on) a(an) Charming Bungalow 1 floor

- **Ideal for all age groups, sporty types**
- **View :** panoramic, sea/ocean, mountain, garden/park, forest, fantastic sunset
- **Setting :** tranquil, suitable for a relaxing break
- **Exposure :** East

" Apartment, 2-4 pax., very bright, overlooking the sea, located in a nice and quiet area less than 100 m from the beach in Costa Calma (Fuerteventura), with blue flag of the European Community. Together a vast Palm Grove and adjacent supermarkets, shopping/shopping centres, bus/bus, banks, restaurants, pubs, disco, etc. Fully equipped with WIFI / WLAN, furniture, sofa bed, kitchenware and household linen, household appliances (TV with national and international channels, radio, fridge, ceramic hob, oven, coffee maker, etc.). It has a terrace of 14 m fully equipped (sun loungers, clothes, etc.). Private parking. In the area, you can practice all kinds of water sports. Ideal for a quiet and sunny holiday! "

Assets

- **Parking :**
Parking uncovered : internal.

Surroundings & location



Ocean



Fishing

" In the area, you can practice all kinds of water sports. Near the beach, in a quiet area, to enjoy a wonderful holiday, together with all the necessary services. "

Leisure

- **Leisure activities less than 12 miles :**

Bathing, pedalo, snorkelling, scuba diving, Scuba diving (Standard diving dress), banana boat, water skiing, jet ski, surfing, windsurfing, sailing, kite surfing, tennis, pathway/broadwalk, boat trips, fishing, fishing, spear fishing

- **Supervised :**

Dive school, tennis school

Surroundings

- **Locality :**

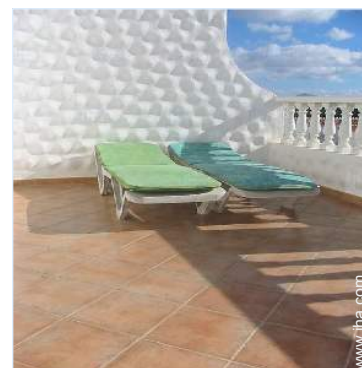
Sea/ocean 330'
Sandy beach 330'
Windsurfing spots 330'
Forest <165'

- **Amenities :**

Village center 660'
Bus stop / bus station <165'
Car rental 165'
Scuba diving material hire 330'
Breadstore <165'
Local stores 165'
Supermarket 165'
High class retailers 165'
Hairdressing salon 165'
Internet cafe 165'
Bank 165'
ATM 165'
Drugstore 660'
Doctor 660'



terrace



terrace



master bedroom

Interior

- **Receive up to :**
from 1 to 4 person(s) (4 adults)
- **Liveable floor area :**
485 Sq.ft.
- **Interior layout :**
1 Room(s), 1 bedroom(s), bathroom, sitting room, american style kitchen, dining room, patio
- **Sleeps - bed(s) :**
1 sleeper sofa(s) 2 pers, 2 two twin beds, 1 baby cradle
- **Guest facilities :**
T.V., book collection, t.v points, cable/satelite, internet access, wifi, wardrobe, cupboard, Hanging wardrobe, radio alarmclock, fly screens, Glazed in area, Drapes, Rolling shutters
- **Appliances :**
Crockery/flatware, kitchen utensils, electric coffee maker, electric kettle, toaster, juicer, electric stove, electric hobs, oven, refridgerator, iron

Exterior

- **Outside accommodation :**
Terrace 150 Sq.ft., gazebo
- **Outside setting :**
Enclosed grounds, tropical garden, wooded park, pinewood, palm grove
- **Outside amenities :**
Outside bar, pizza oven, BBQ, yard table(s), yard seat(s), parasol, chaise(s) longue(s)



kitchen

Services

- **washing :**
Sheets, Towels, Comforter(s), Comforter(s), Pillows
- **Single family home :**
Cleaning on departure, Parking

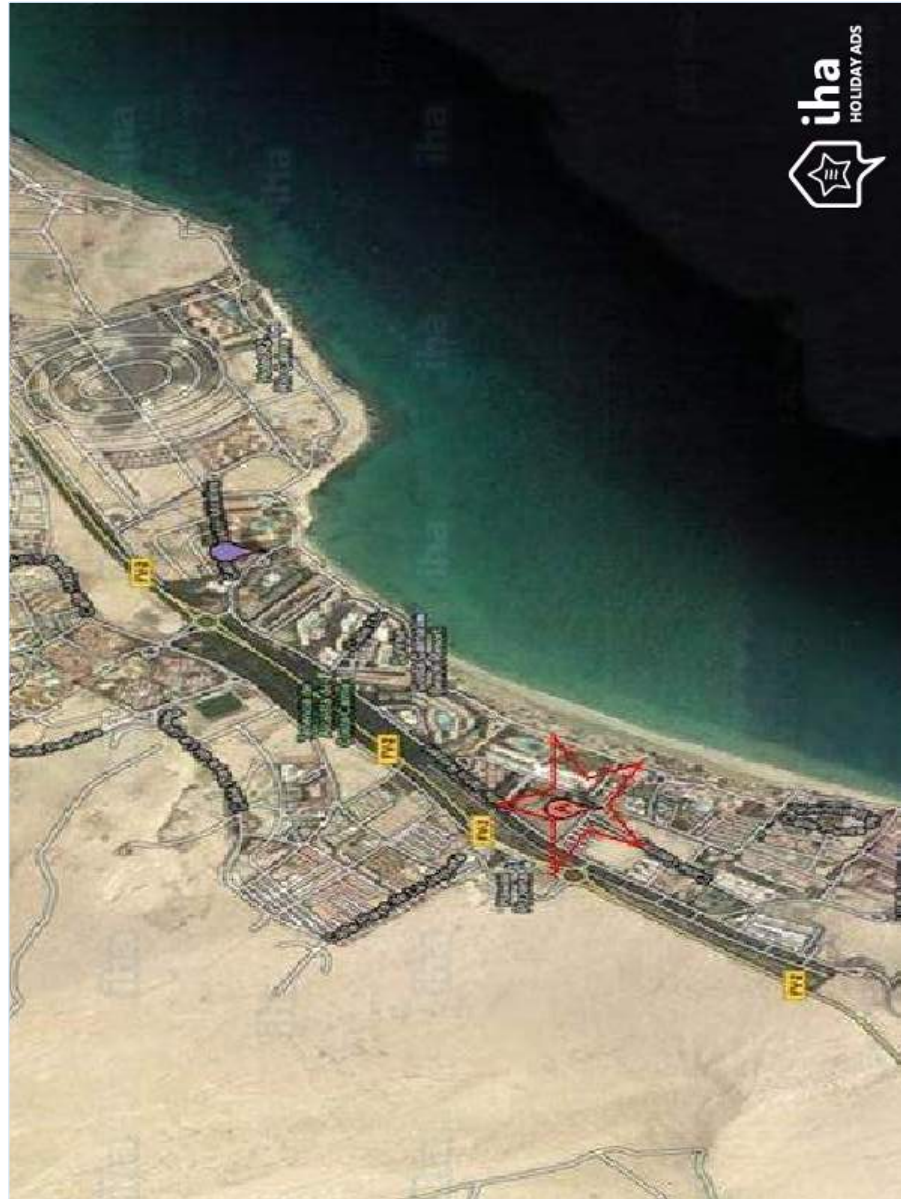
For your guidance

- **For your guidance**
Kids welcome
Pets friendly
Cell phone network coverage
Water : hot/cold
Local voltage supply : 220V / 60Hz
Electricity supply : mains



sitting room

Floor plan



www.iha.com

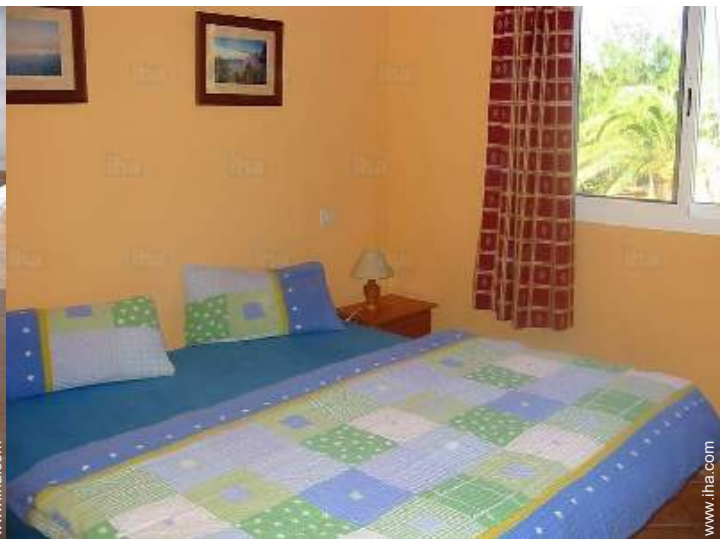
Photo album - 1



terrace



terrace



master bedroom



sitting room



kitchen

Photo album - 2



american style kitchen



sitting room



terrace



view from the kitchen



façade



General



General



tropical garden

Photo album - 3



tropical garden



panorama



panorama



sandy beach



sandy beach



sandy beach



sandy beach



sandy beach



sandy beach

Location



Location & Access

" Situated in Costa Calma (Fuerteventura), quiet urbanization with private parking, for convenience. "



GPS coordinates in degrees, minutes, seconds: Latitude 28°9'35"N - Longitude 14°13'47"W (Dwelling)

Address

→ AV. JAHN REISEN, 15 - A8
URBANIZACION SOLYMAR JASMIN
35627 Costa Calma

- La Lajita : (7,5mi.)
- Morro Jable : (12.5mi.)

Contact

Spoken languages



Vacation rental
Costa Calma - Canary Islands
"Solymar Jasmin A8"

[Book now](#)

Availability calendar - from : september 2020

Sep	Tu	W	Th	F	Sa	Su	M	Tu	W	Th	F	Sa	Su	M	Tu	W	Th	F	Sa	Su	M	Tu	W							
2020	1	2	3	4	5	6	7	8	9	10	11	12	13	14	15	16	17	18	19	20	21	22	23	24	25	26	27	28	29	30

Oct	Th	F	Sa	Su	M	Tu	W	Th	F	Sa	Su	M	Tu	W	Th	F	Sa	Su	M	Tu	W	Th	F	Sa	Su	M	Tu	W	Th	F	Sa
2020	1	2	3	4	5	6	7	8	9	10	11	12	13	14	15	16	17	18	19	20	21	22	23	24	25	26	27	28	29	30	31
	-	-	-	-	-	-	-	-	-	-	-	-	-	-	-	-	-	-	-	-	-	-	-	-	-	-	-	-	-	-	-

Nov	Su	M	Tu	W	Th	F	Sa	Su	M	Tu	W	Th	F	Sa	Su	M	Tu	W	Th	F	Sa	Su	M	Tu	W	Th	F	Sa	Su	M
2020	1	2	3	4	5	6	7	8	9	10	11	12	13	14	15	16	17	18	19	20	21	22	23	24	25	26	27	28	29	30
	-	-	-	-	-	-	-	-	-	-	-	-	-	-	-	-	-	-	-	-	-	-	-	-	-	-	-	-	-	-

Dec	Tu	W	Th	F	Sa	Su	M	Tu	W	Th	F	Sa	Su	M	Tu	W	Th	F	Sa	Su	M	Tu	W	Th	F	Sa	Su	M	Tu	W	Th
2020	1	2	3	4	5	6	7	8	9	10	11	12	13	14	15	16	17	18	19	20	21	22	23	24	25	26	27	28	29	30	31
	-	-	-	-	-	-	-	-	-	-	-	-	-	-	-	-	-	-	-	-	-	-	-	-	-	-	-	-	-	-	-

Jan	F	Sa	Su	M	Tu	W	Th	F	Sa	Su	M	Tu	W	Th	F	Sa	Su	M	Tu	W	Th	F	Sa	Su	M	Tu	W	Th	F	Sa	Su
2021	1	2	3	4	5	6	7	8	9	10	11	12	13	14	15	16	17	18	19	20	21	22	23	24	25	26	27	28	29	30	31
	-	-	-	-	-	-	-	-	-	-	-	-	-	-	-	-	-	-	-	-	-	-	-	-	-	-	-	-	-	-	-

Feb	M	Tu	W	Th	F	Sa	Su	M	Tu	W	Th	F	Sa	Su	M	Tu	W	Th	F	Sa	Su	M	Tu	W	Th	F	Sa	Su	
2021	1	2	3	4	5	6	7	8	9	10	11	12	13	14	15	16	17	18	19	20	21	22	23	24	25	26	27	28	
	-	-	-	-	-	-	-	-	-	-	-	-	-	-	-	-	-	-	-	-	-	-	-	-	-	-	-	-	-

Mar	M	Tu	W	Th	F	Sa	Su	M	Tu	W	Th	F	Sa	Su	M	Tu	W	Th	F	Sa	Su	M	Tu	W	Th	F	Sa	Su	M	Tu	W
2021	1	2	3	4	5	6	7	8	9	10	11	12	13	14	15	16	17	18	19	20	21	22	23	24	25	26	27	28	29	30	31
	-	-	-	-	-	-	-	-	-	-	-	-	-	-	-	-	-	-	-	-	-	-	-	-	-	-	-	-	-	-	

Apr	Th	F	Sa	Su	M	Tu	W	Th	F	Sa	Su	M	Tu	W	Th	F	Sa	Su	M	Tu	W	Th	F	Sa	Su	M	Tu	W	Th	F
2021	1	2	3	4	5	6	7	8	9	10	11	12	13	14	15	16	17	18	19	20	21	22	23	24	25	26	27	28	29	30
	-	-	-	-	-	-	-	-	-	-	-	-	-	-	-	-	-	-	-	-	-	-	-	-	-	-	-	-	-	-

May	Sa	Su	M	Tu	W	Th	F	Sa	Su	M	Tu	W	Th	F	Sa	Su	M	Tu	W	Th	F	Sa	Su	M	Tu	W	Th	F	Sa	Su	M
2021	1	2	3	4	5	6	7	8	9	10	11	12	13	14	15	16	17	18	19	20	21	22	23	24	25	26	27	28	29	30	31
	-	-	-	-	-	-	-	-	-	-	-	-	-	-	-	-	-	-	-	-	-	-	-	-	-	-	-	-	-	-	

June	Tu	W	Th	F	Sa	Su	M	Tu	W	Th	F	Sa	Su	M	Tu	W	Th	F	Sa	Su	M	Tu	W	Th	F	Sa	Su	M	Tu	W
2021	1	2	3	4	5	6	7	8	9	10	11	12	13	14	15	16	17	18	19	20	21	22	23	24	25	26	27	28	29	30
	-	-	-	-	-	-	-	-	-	-	-	-	-	-	-	-	-	-	-	-	-	-	-	-	-	-	-	-	-	-



Vacation rental
Las Palmas Province - Costa Calma
"Solymar Jasmin A8"

10
[Book now](#)

Availability calendar - from : june 2021

Jul	Th	F	Sa	Su	M	Tu	W	Th	F	Sa	Su	M	Tu	W	Th	F	Sa	Su	M	Tu	W	Th	F	Sa							
2021	1	2	3	4	5	6	7	8	9	10	11	12	13	14	15	16	17	18	19	20	21	22	23	24	25	26	27	28	29	30	31

Aug	Su	M	Tu	W	Th	F	Sa	Su	M	Tu	W	Th	F	Sa	Su	M	Tu	W	Th	F	Sa	Su	M	Tu							
2021	1	2	3	4	5	6	7	8	9	10	11	12	13	14	15	16	17	18	19	20	21	22	23	24	25	26	27	28	29	30	31

[Month : Next >>](#)

Rental rates - Apartment-Flat - from 1 to 4 Person(s)

Rates	Night	Weekend	week	2 weeks	Month
■ Mid season	\$62* > 2	-	\$431*	\$777*	\$1478*
■ High season	\$76* > 2	-	\$531*	\$956*	\$1822*

> Minimum Night

[Book now](#)

Booking conditions

• Reservation

→ Payment made upon reservation :
25% of rental sum

[▶ Book now](#)

[▶ Contact the owner](#)

Contact directly the property owners

www.iha.com
Advert No.
37402
[>> Book now <<](#)

Contact

Spoken languages



* Converted at the rate indicated : €100 = \$110 = £91

Advert No. 37402

www.iha.com

