

Vacation rental Cristian "Villa Cristiani"



Villa, detached, 2 floors, separate entrance, in(on) a(an) Luxury Property

Setting : ancient, rustic

Capacity : from 1 to 12 person(s)
Bedroom(s) : 5



Qualité tourisme ()
Family Holiday Destinations ()

Cristian - Braşov County - Transylvania

Romania

Reservation : +40 (0) 734162794 (Romania)

Advert No. 51507

www.iha.com



Vacation rental



Villa, detached, 2 floors, separate entrance, in(on) a(an) Luxury Property

- **Ideal for all age groups, family groups**
- **View** : panoramic, mountain, country side, forest, village, monument
- **Setting** : ancient, rustic

Assets

- **Parking** :
Parking uncovered : 5 internal, 9 off road.
- **Advantages** :
Jacuzzi



view from the garden/park

Surroundings & location



Leisure

- **Leisure activities less than 12 miles** :

Snowboarding, ice-skating, bathing, coastal/forest paths, hiking, rock climbing, mountain bike (path), rollerblade/rollerskate (circuit), skate board (ramps), ATV/Quad Bike, go-karting, basketball, paintball, fishing

- **Attractions and relaxation** :

Park and garden, zoo/animal park, historical site, museum, festivals

Surroundings

- **Locality** :

Forest 0.62mi.
Mountain range 0.62mi.

- **Amenities** :

Village center 0.62mi.
Bus stop / bus station 990'
Local stores 165'
ATM 0.62mi.
Drugstore 990'
Dispensary 990'



living room



view from the garden/park



bedroom

Interior

- **Receive up to :**

from 1 to 12 person(s) (12 adults)

- **Liveable floor area :**

1,940 Sq.ft.

- **Interior layout :**

5 bedroom(s), 6 bathroom, 6 shower room, living room 430 Sq.ft., sitting room 430 Sq. ft., Kitchen Area, dining room, dining area, cosy nook, tv den, bar area, dance room, reception hall, laundry room, veranda, loggia

- **Sleeps - bed(s) :**

2 full bed(s), 1 sleeper sofa(s) 2 pers, 1 twin bed(s), 2 two twin beds, 1 guest folding bed (s) 1 pers, 5 possible extra bed(s)

- **Guest facilities :**

T.V., digital home cinema, hi-fi system, DVD player, cable/satellite, internet access, high speed internet access, wifi, wardrobe, Hanging wardrobe, hair dryer, central heating, skylights, Drapes, Blinds, Double glazed, entry phone system, digipad entry system, intruder alarm, fire alarm

- **Appliances :**

Kitchen utensils, cafetiere, electric coffee maker, electric kettle, toaster, juicer, gaz stove, electric hobs, oven, micro-wave oven, extractor hood, refridgerator, deep freeze, ice maker, dish washer, washing machine, clothes dryer, vacuum cleaner, iron, ironing board



view from the living room

Exterior

- **Ground surface :**

1,076 Sq.ft.

- **Outside accommodation :**

Terrace 300 Sq.ft., covered terrace 300 Sq. ft., balcony 75 Sq.ft.

- **Outside setting :**

Private courtyard, lawn, fountain

- **Outside amenities :**

BBQ, yard table(s), yard seat(s), sun lounge



Parking

Services

- **washing :**

Sheets (2 X / per week), Towels (3 X / per week), Linen (2 X / per week)

- **Single family home :**

Cleaning supplement (+\$59*), Cleaning on departure supplement (+\$59*), Snow clearance, Parking, Airport transfers supplement (+\$82*)

- **Personnel :**

Staff supplement, Chef(s) supplement, Laundry (2 X / per week), Baby sitting supplement, Guide supplement

- **Restauration :**

Breakfast supplement (+\$9*), Guest table supplement, BBQ meal supplement, Half board, Full board supplement, Locally produced meals supplement, Picnic basket supplement

For your guidance

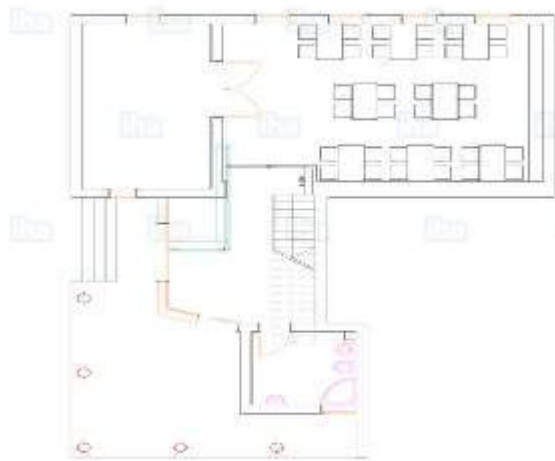
- **For your guidance**

Kids welcome
Cell phone network coverage, personal transport advisable
Water : hot/cold
Local voltage supply : 220V / 60Hz
Electricity supply : mains

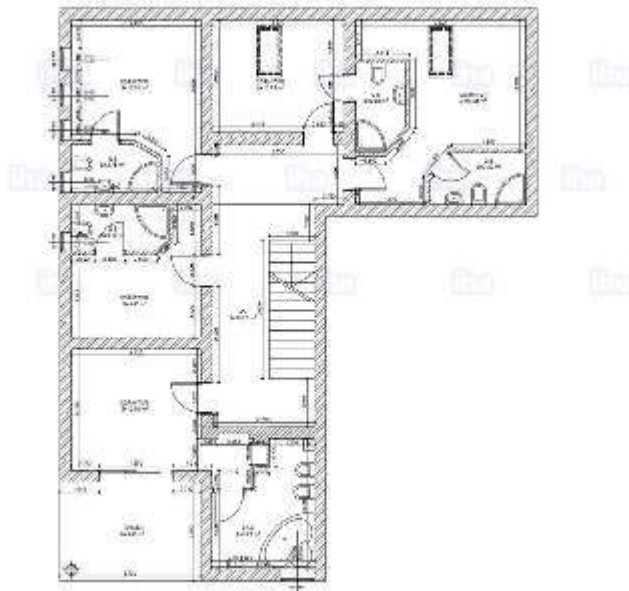
- **Handicapped people welcome**

Wheelchair access

Floor plan



www.iha.com



www.iha.com

Photo album - 1



view from the garden/park



view from the garden/park



living room



bedroom



view from the living room

Photo album - 2



Parking

interior

shower room



bathroom

bedroom

bedroom



jacuzzi

bathroom

bathroom



large bedroom

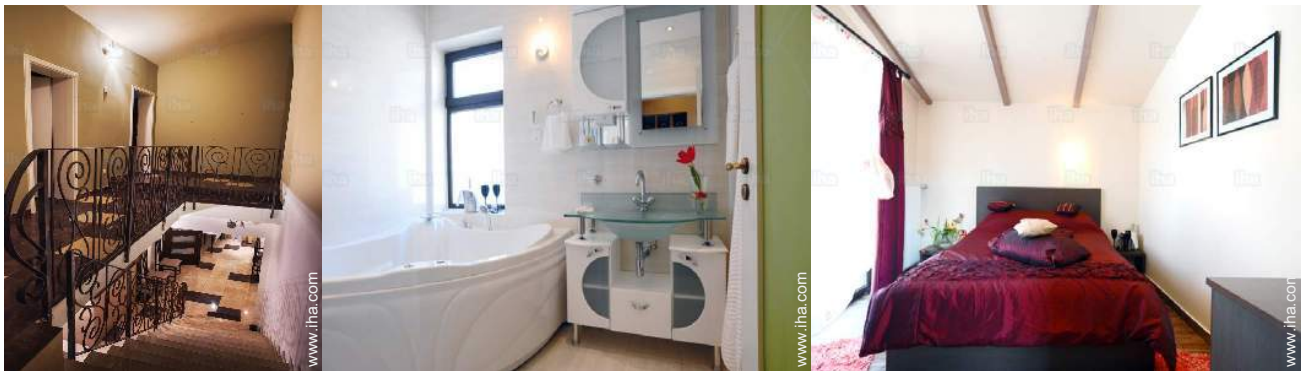
Photo album - 3



shower room

bathroom

view from the bedroom



Interior layout

jacuzzi

view from the bedroom



view from the covered terrace

view from the kitchen

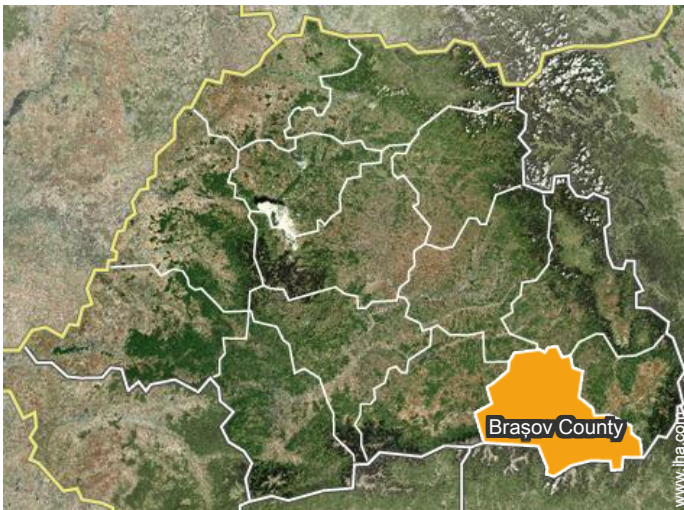
view from the terrace



view from the garden/park

view from the covered terrace

Location



Location & Access



GPS coordinates in degrees, minutes, seconds: Latitude 45°37'45.27"N - Longitude 25°29'6.98"E ([Dwelling](#))

Address

→ Str. Lunga Nr. 153

• Airport Bucharest Henri Coandă

→ Otopeni, Ilfov County, Muntenia, Romania

→ Distance : 112mi.

→ Time : 2h30'

• Freeway (exit) DN 1

→ Bucharest, Braşov County, Bucharest County, Romania

→ Distance : 112mi.

→ Time : 2h30'

• Braşov : (4.5mi.)

• Râşnov : (1.25mi.)

• Bran : (12.5mi.)

Contact

Spoken languages



Vacation rental Cristian - Romania "Villa Cristiani"

9

[Book now](#)

Availability calendar - from : september 2017

Sep	F	Sa	Su	M	Tu	W	Th	F	Sa	Su	M	Tu	W	Th	F	Sa	Su	M	Tu	W	Th	F	Sa	
2017	1	2	3	4	5	6	7	8	9	10	11	12	13	14	15	16	17	18	19	20	21	22	23	24

Oct	Su	M	Tu	W	Th	F	Sa	Su	M	Tu	W	Th	F	Sa	Su	M	Tu	W	Th	F	Sa	Su	M	Tu
2017	1	2	3	4	5	6	7	8	9	10	11	12	13	14	15	16	17	18	19	20	21	22	23	24
	-	-	-	-	-	-	-	-	-	-	-	-	-	-	-	-	-	-	-	-	-	-	-	-

Nov	W	Th	F	Sa	Su	M	Tu	W	Th	F	Sa	Su	M	Tu	W	Th	F	Sa	Su	M	Tu	W	Th
2017	1	2	3	4	5	6	7	8	9	10	11	12	13	14	15	16	17	18	19	20	21	22	23
	-	-	-	-	-	-	-	-	-	-	-	-	-	-	-	-	-	-	-	-	-	-	-

Dec	F	Sa	Su	M	Tu	W	Th	F	Sa	Su	M	Tu	W	Th	F	Sa	Su	M	Tu	W	Th	F	Sa	Su
2017	1	2	3	4	5	6	7	8	9	10	11	12	13	14	15	16	17	18	19	20	21	22	23	24
	-	-	-	-	-	-	-	-	-	-	-	-	-	-	-	-	-	-	-	-	-	-	-	-

Jan	M	Tu	W	Th	F	Sa	Su	M	Tu	W	Th	F	Sa	Su	M	Tu	W	Th	F	Sa	Su	M	Tu	W
2018	1	2	3	4	5	6	7	8	9	10	11	12	13	14	15	16	17	18	19	20	21	22	23	24
	-	-	-	-	-	-	-	-	-	-	-	-	-	-	-	-	-	-	-	-	-	-	-	-

Feb	Th	F	Sa	Su	M	Tu	W	Th	F	Sa	Su	M	Tu	W	Th	F	Sa	Su	M	Tu	W	
2018	1	2	3	4	5	6	7	8	9	10	11	12	13	14	15	16	17	18	19	20	21	22
	-	-	-	-	-	-	-	-	-	-	-	-	-	-	-	-	-	-	-	-	-	-

Mar	Th	F	Sa	Su	M	Tu	W	Th	F	Sa	Su	M	Tu	W	Th	F	Sa	Su	M	Tu	W	Th	F	Sa
2018	1	2	3	4	5	6	7	8	9	10	11	12	13	14	15	16	17	18	19	20	21	22	23	24
	-	-	-	-	-	-	-	-	-	-	-	-	-	-	-	-	-	-	-	-	-	-	-	-

Apr	Su	M	Tu	W	Th	F	Sa	Su	M	Tu	W	Th	F	Sa	Su	M	Tu	W	Th	F	Sa	Su	M
2018	1	2	3	4	5	6	7	8	9	10	11	12	13	14	15	16	17	18	19	20	21	22	23
	-	-	-	-	-	-	-	-	-	-	-	-	-	-	-	-	-	-	-	-	-	-	-

May	Tu	W	Th	F	Sa	Su	M	Tu	W	Th	F	Sa	Su	M	Tu	W	Th	F	Sa	Su	M	Tu	W	Th
2018	1	2	3	4	5	6	7	8	9	10	11	12	13	14	15	16	17	18	19	20	21	22	23	
	-	-	-	-	-	-	-	-	-	-	-	-	-	-	-	-	-	-	-	-	-	-	-	

June	F	Sa	Su	M	Tu	W	Th	F	Sa	Su	M	Tu	W	Th	F	Sa	Su	M	Tu	W	Th	F	Sa
2018	1	2	3	4	5	6	7	8	9	10	11	12	13	14	15	16	17	18	19	20	21	22	23
	-	-	-	-	-	-	-	-	-	-	-	-	-	-	-	-	-	-	-	-	-	-	-

■ Mid season ■ High season

Vacation rental
Transylvania - Cristian
"Villa Cristiani"

10
[Book now](#)

Availability calendar - from : june 2018

Jul	Su	M	Tu	W	Th	F	Sa	Su	M	Tu	W	Th	F	Sa	Su	M	Tu	W	Th	F	Sa	Su	M	Tu							
2018	1	2	3	4	5	6	7	8	9	10	11	12	13	14	15	16	17	18	19	20	21	22	23	24	25	26	27	28	29	30	31
-	-	-	-	-	-	-	-	-	-	-	-	-	-	-	-	-	-	-	-	-	-	-	-	-	-	-	-	-	-	-	

Aug	W	Th	F	Sa	Su	M	Tu	W	Th	F	Sa	Su	M	Tu	W	Th	F	Sa	Su	M	Tu	W	Th	F							
2018	1	2	3	4	5	6	7	8	9	10	11	12	13	14	15	16	17	18	19	20	21	22	23	24	25	26	27	28	29	30	31
-	-	-	-	-	-	-	-	-	-	-	-	-	-	-	-	-	-	-	-	-	-	-	-	-	-	-	-	-	-	-	

■ Mid season ■ High season

[Month : Next >>](#)

Rental rates - Villa - from 1 to 12 Person(s)

Rates	Night	Weekend	week	2 weeks	Month
■ Low season	\$147*	\$252*	\$938*	\$1877*	\$3519*
■ Mid season	\$147*	\$252*	\$938*	\$1877*	\$3519*
■ High season	\$147*	\$252*	\$938*	\$1877*	\$3519*

[Book now](#)

Booking conditions

- **Reservation**
→ Payment made upon reservation : 50% of rental sum
→ Deposit required : \$35*
- **rentals**
→ Cleaning charge on departure included

Accepted methods of payment

- Visa/Delta/Electron • Bank transfer (wire) • PayPal • Cash



[▶ Book now](#)

[▶ Contact the owner](#)

Contact directly the property owners

www.iha.com
Advert No.
51507
[>> Book now <<](#)

Contact

Spoken languages  

* Converted at the rate indicated : €100 = \$117.29 = £89.59

Advert No. 51507

www.iha.com

