

Vacation rental Baltic Sea Apartment-Flat



Apartment-Flat 4nd floor, shared entrance, in(on) a(an) Estate 7 floors

Setting : suitable for a relaxing break, ocean

Capacity : from 1 to 4 person(s)

Bedroom(s) : 2

Room(s) : 2

Damp - Schleswig Holstein

Germany

Reservation : +49 (0) 43525188 (Germany)

Advert No. 56037

www.iha.com



Vacation rental



Apartment-Flat 4nd floor, shared entrance, in(on) a(an) Estate 7 floors

- **Ideal for all age groups, family**
- **View :** panoramic, unobscured, dominant, sea/ocean, garden/park, harbour
- **Setting :** suitable for a relaxing break, ocean
- **Exposure :** North-east

Assets

- **Parking :**
Parking uncovered : 1 reserved stall, off road.
- **Advantages :**
Sauna, jacuzzi, massage table, tanning bed, fitness machine(s), pool table, pinball, ping-pong table, basket ball net, squash court, volley ball court, mini-golf, 1 bike(s), 1 windsurf board(s), motor boat, sailing boat, horses and riding equipment

Benefits :
Direct access to the beach, driving range, stable(s)



marina

Surroundings & location



Ocean Golf Horse riding Fishing



Spa Festival Culture

Leisure

- **Leisure activities less than 12 miles :**

Bathing, pedalo, scuba diving, Scuba diving (Standard diving dress), windsurfing, sailing, kite surfing, golf, tennis, squash, riding school, pathway/broadwalk, coastal/forest paths, hiking, rappel, boat trips, horse-drawn carriage, horse trekking, mini-golf, rollerblade/rollerskate (circuit), skate board (ramps), ten-pin bowling, volleyball, fishing, fishing

- **Supervised :**

Sailing school, dive school, riding school

- **Attractions and relaxation :**

Bar/pub, discotheque, restaurant, park and garden, zoo/animal park, historical site, museum, theater, summer theater, thermal baths, sauna, health spa, beauticians, fitness center

Surroundings

- **Locality :**

Heated swimming pool 330'
Sea/ocean 330'
Sandy beach 330'
Public tennis court 660'
Windsurfing spots 330'
Surfing spots 330'
Watersports centre 330'
Forest 0.5mi.
Marina <165'

- **Amenities :**

Kindergarten 660'
Village center <165'
Bus stop / bus station 330'
Bike/mountain bike hire <165'
Boat rental 330'
Scuba diving material hire 990'
Household linens for hire/laundry services <165'
Breadstore <165'
Local stores 330'
Supermarket 165'
Hairdressing salon 330'
Internet cafe 330'
Mail office <165'
Bank 3mi.
ATM <165'
Drugstore 3mi.
Doctor 330'
Hospital 990'
Dispensary



dining area



living room



living room

Interior

- **Receive up to :**
from 1 to 4 person(s) (2 adults, 2 kids)
- **Liveable floor area :**
530 Sq.ft.
- **Interior layout :**
2 Room(s), 2 bedroom(s), sleeping den, 1 bathroom, 1 toilets, living room 215 Sq.ft., separate kitchen, dining area, loggia
- **Sleeps - bed(s) :**
2 full bed(s), 2 two twin beds
- **Guest facilities :**
Elevator, T.V., hi-fi system, DVD player, phone, cable/satelite, wardrobe, cupboard, Hanging wardrobe, central heating, Drapes, Double glazed, entry phone system
- **Appliances :**
Crockery/flatware, kitchen utensils, electric coffee maker, electric kettle, toaster, juicer, electric stove, micro-wave oven, extractor hood, refridgerator, deep freeze, dish washer, vacuum cleaner, iron, ironing board

Exterior

- **Outside accommodation :**
Balcony
- **Outside setting :**
Lawn
- **Outside amenities :**
Yard table(s), yard seat(s)



view from the bedroom

Services

- **washing :**
Sheets supplement (+\$7*), Towels supplement (+\$4*), Linen supplement (+\$1*)
- **Single family home :**
Cleaning on departure, Parking
- **Personnel :**
Laundry supplement, Baby sitting supplement, Beauty treatments supplement, Massage supplement

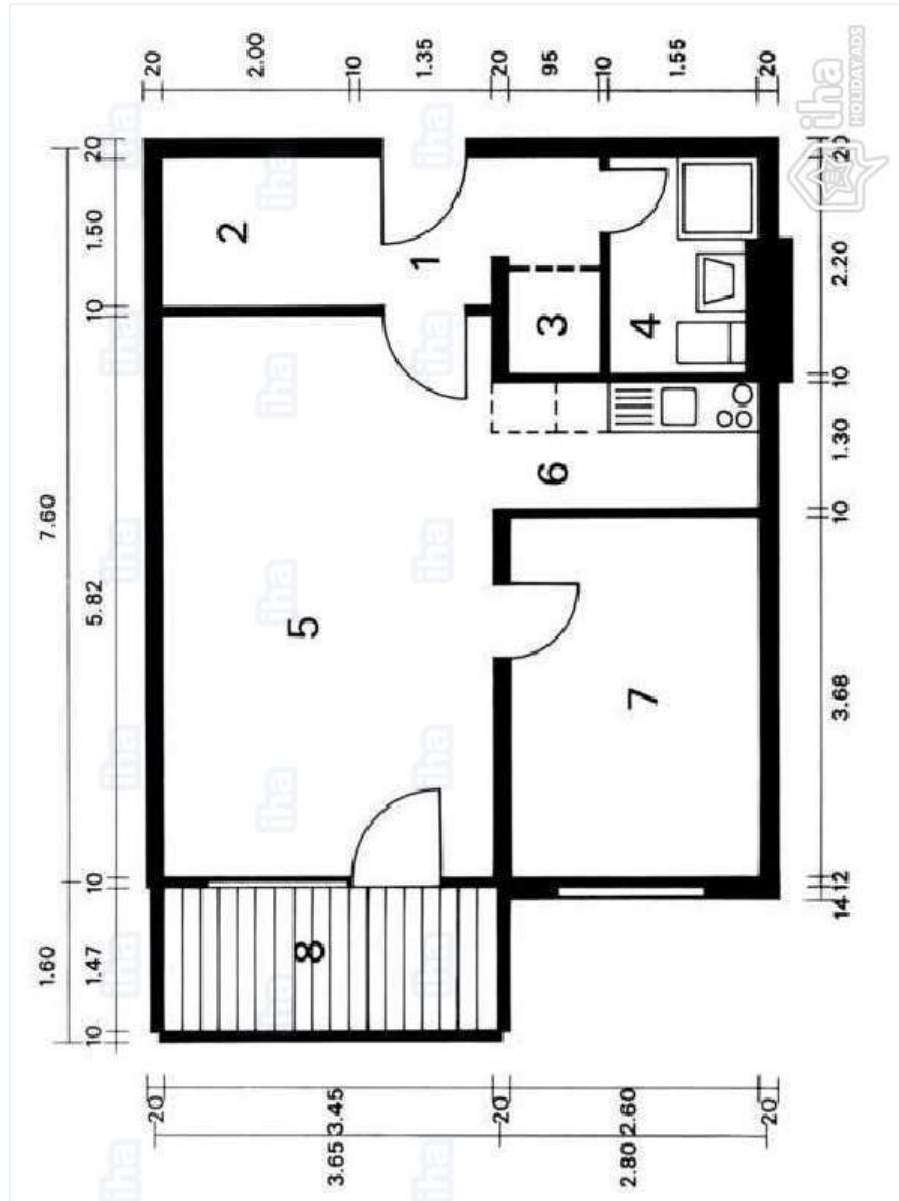
For your guidance

- **For your guidance**
Kids welcome
Pets accepted under certain conditions (ask the owner)
Non smoking rental, cell phone network coverage
Water : hot/cold
Local voltage supply : 220-240V / 50Hz
Electricity supply : mains
- **Handicapped people welcome**
Wheelchair access



master bedroom

Floor plan



www.iha.com

Photo album - 1



marina



living room



dining area



living room



master bedroom

Photo album - 2



view from the bedroom

kitchen



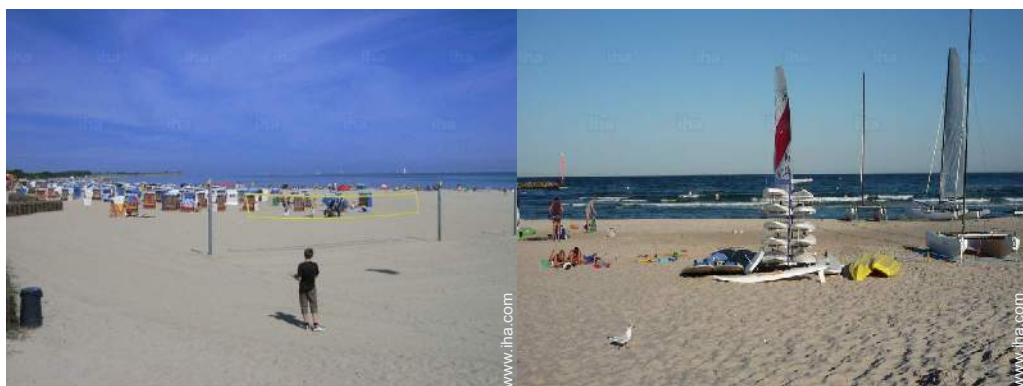
bathroom

bathroom



small bedroom

view from the loggia



direct access to the beach

watersports nearby

Photo album - 3



sailing



sailing



outside



view over the sea



view of the port



outside



outside

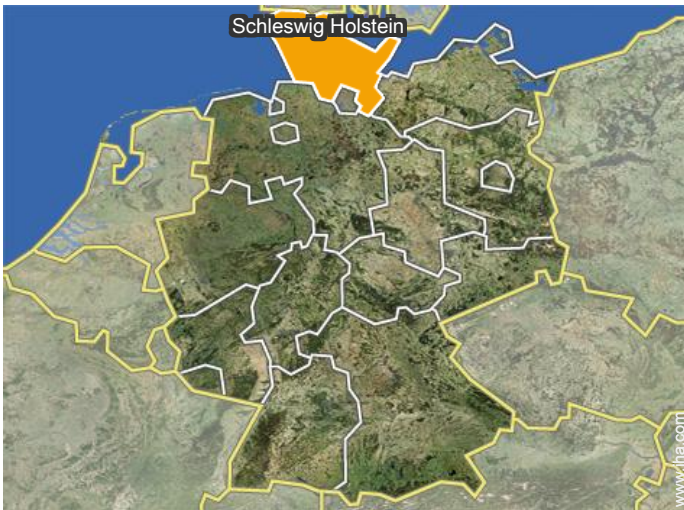


Summer



living room

Location



Location & Access



GPS coordinates in degrees, minutes, seconds: Latitude 54°34'54"N - Longitude 10° 1'16"E ([Dwelling](#))

Address

→ Seeuferweg
24351 Damp

● Freeway (exit) A7

→ Büdelsdorf, Schleswig Holstein,
Germany
→ Distance : 26mi.
→ Time : 40'

● Railroad station Eckernförde

→ Eckernförde, Schleswig Holstein,
Germany
→ Distance : 13mi.
→ Time : 30'

● Airport Hamburg

→ Hamburg, Hamburg Sate, Germany
→ Distance : 84mi.
→ Time : 1h30'

- Eckernförde : (12.5mi.)
- Kappeln : (9mi.)
- Kiel : (30mi.)

Contact

Spoken
languages



Vacation rental Damp - Baltic Sea Apartment-Flat

[Book now](#)

Availability calendar - from : november 2017

Nov	W	Th	F	Sa	Su	M	Tu	W	Th	F	Sa	Su	M	Tu	W	Th	F	Sa	Su	M	Tu	W	Th	
2017	1	2	3	4	5	6	7	8	9	10	11	12	13	14	15	16	17	18	19	20	21	22	23	24

Dec	F	Sa	Su	M	Tu	W	Th	F	Sa	Su	M	Tu	W	Th	F	Sa	Su	M	Tu	W	Th	F	Sa	Su
2017	1	2	3	4	5	6	7	8	9	10	11	12	13	14	15	16	17	18	19	20	21	22	23	24
	-	-	-	-	-	-	-	-	-	-	-	-	-	-	-	-	-	-	-	-	-	-	-	-

Jan	M	Tu	W	Th	F	Sa	Su	M	Tu	W	Th	F	Sa	Su	M	Tu	W	Th	F	Sa	Su	M	Tu	W
2018	1	2	3	4	5	6	7	8	9	10	11	12	13	14	15	16	17	18	19	20	21	22	23	24
	-	-	-	-	-	-	-	-	-	-	-	-	-	-	-	-	-	-	-	-	-	-	-	-

Feb	Th	F	Sa	Su	M	Tu	W	Th	F	Sa	Su	M	Tu	W	Th	F	Sa	Su	M	Tu	W		
2018	1	2	3	4	5	6	7	8	9	10	11	12	13	14	15	16	17	18	19	20	21	22	23
	-	-	-	-	-	-	-	-	-	-	-	-	-	-	-	-	-	-	-	-	-	-	-

Mar	Th	F	Sa	Su	M	Tu	W	Th	F	Sa	Su	M	Tu	W	Th	F	Sa	Su	M	Tu	W	Th	F	Sa
2018	1	2	3	4	5	6	7	8	9	10	11	12	13	14	15	16	17	18	19	20	21	22	23	24
	-	-	-	-	-	-	-	-	-	-	-	-	-	-	-	-	-	-	-	-	-	-	-	-

Apr	Su	M	Tu	W	Th	F	Sa	Su	M	Tu	W	Th	F	Sa	Su	M	Tu	W	Th	F	Sa	Su	M
2018	1	2	3	4	5	6	7	8	9	10	11	12	13	14	15	16	17	18	19	20	21	22	23
	-	-	-	-	-	-	-	-	-	-	-	-	-	-	-	-	-	-	-	-	-	-	-

May	Tu	W	Th	F	Sa	Su	M	Tu	W	Th	F	Sa	Su	M	Tu	W	Th	F	Sa	Su	M	Tu	W	Th
2018	1	2	3	4	5	6	7	8	9	10	11	12	13	14	15	16	17	18	19	20	21	22	23	24
	-	-	-	-	-	-	-	-	-	-	-	-	-	-	-	-	-	-	-	-	-	-	-	-

June	F	Sa	Su	M	Tu	W	Th	F	Sa	Su	M	Tu	W	Th	F	Sa	Su	M	Tu	W	Th	F	Sa
2018	1	2	3	4	5	6	7	8	9	10	11	12	13	14	15	16	17	18	19	20	21	22	23
	-	-	-	-	-	-	-	-	-	-	-	-	-	-	-	-	-	-	-	-	-	-	-

Jul	Su	M	Tu	W	Th	F	Sa	Su	M	Tu	W	Th	F	Sa	Su	M	Tu	W	Th	F	Sa	Su	M	Tu
2018	1	2	3	4	5	6	7	8	9	10	11	12	13	14	15	16	17	18	19	20	21	22	23	
	-	-	-	-	-	-	-	-	-	-	-	-	-	-	-	-	-	-	-	-	-	-	-	

Aug	W	Th	F	Sa	Su	M	Tu	W	Th	F	Sa	Su	M	Tu	W	Th	F	Sa	Su	M	Tu	W	Th	F
2018	1	2	3	4	5	6	7	8	9	10	11	12	13	14	15	16	17	18	19	20	21	22	23	
	-	-	-	-	-	-	-	-	-	-	-	-	-	-	-	-	-	-	-	-	-	-	-	-

■ Low season ■ Mid season



Vacation rental
Schleswig Holstein - Germany
Apartment-Flat

10
[Book now](#)

Availability calendar - from : august 2018

Sep	Sa	Su	M	Tu	W	Th	F	Sa	Su	M	Tu	W	Th	F	Sa	Su	M	Tu	W	Th	F	Sa	Su							
2018	1	2	3	4	5	6	7	8	9	10	11	12	13	14	15	16	17	18	19	20	21	22	23	24	25	26	27	28	29	30
-	-	-	-	-	-	-	-	-	-	-	-	-	-	-	-	-	-	-	-	-	-	-	-	-	-	-	-	-	-	

Oct	M	Tu	W	Th	F	Sa	Su	M	Tu	W	Th	F	Sa	Su	M	Tu	W	Th	F	Sa	Su	M	Tu	W							
2018	1	2	3	4	5	6	7	8	9	10	11	12	13	14	15	16	17	18	19	20	21	22	23	24	25	26	27	28	29	30	31
-	-	-	-	-	-	-	-	-	-	-	-	-	-	-	-	-	-	-	-	-	-	-	-	-	-	-	-	-	-		



Low season



Mid season

[Month : Next >>](#)

Rental rates - Apartment-Flat - from 1 to 4 Person(s)

Rates	Night	Weekend	week	2 weeks	Month
Low season	\$50* > 3	-	-	-	-
Mid season	\$67* > 3	-	-	-	-
High season	\$83* (Saturday) > 7	-	-	-	-

(Check-in day) > Minimum Night

[Book now](#)

Booking conditions

• Reservation

→ Payment made upon reservation : 25% of rental sum

• rentals

→ Service charges to be added
→ Cleaning charge levy on departure : \$59*
→ Anticipated supplement for :
- animals
- supplementary bed(s)

[▶ Book now](#)

[▶ Contact the owner](#)

Accepted methods of payment

• International Money Order • Bank transfer (wire) • MasterCard/EuroCard • Cash

Contact directly the property owners

www.iha.com
Advert No.
56037
[>> Book now <<](#)

Contact

Spoken languages



* Converted at the rate indicated : €100 = \$117.29 = £89.59

Advert No. 56037

www.iha.com

