

Vacation rental De Haan "Dahlia"



Apartment-Flat first floor, separate entrance, in(on) a(an) Private property

Setting : peaceful, rural

Capacity : from 1 to 8 person(s)

Bedroom(s) : 2

Room(s) : 6



Ecotourism
Meublés de Tourisme (1 star)

De Haan - West Flanders - Flanders

Belgium

Reservation : +32 (0) 16 481059 (Belgium)

Advert No. 55927

www.iha.com



>> VACATION HOMES

DIRECT BY OWNERS

Vacation rental



Apartment-Flat first floor, separate entrance, in(on) a(an) Private property

- **Ideal for large families, couples with baby**
- **View :** sea/ocean, garden/park
- **Setting :** peaceful, rural
- **Exposure :** South

Assets

- **Tennis :**
Shared tennis
- **Parking :**
Parking uncovered : 2 off road.
- **Advantages :**
Volley ball court, mini-golf, pétanque field
- **baby equipment :**
High chair

Benefits :
Direct access to the beach



kitchen

Surroundings & location



Ocean Golf Horse riding Fishing



Culture

Leisure

- **Leisure activities less than 12 miles :**

Jet ski, surfing, windsurfing, sailing, golf, tennis, squash, riding school, hiking, boat trips, horse-drawn carriage, horse trekking, mini-golf, skate board (ramps), ten-pin bowling, baseball, basketball, volleyball, pétanque field

- **Attractions and relaxation :**

Bar/pub, park and garden

Surroundings

- **Locality :**

Heated swimming pool 0.93mi.
Sea/ocean 0.62mi.
Sandy beach 0.62mi.
Nudist beach 1.5mi.
Public swimming pool 0.93mi.
Public tennis court 1.5mi.
18 hole golf course 1.5mi.
Windsurfing spots 2.5mi.
Surfing spots 2.5mi.
Watersports centre 4.5mi.
Marina 4.5mi.

- **Amenities :**

Village center 0.62mi.
Downtown 0.62mi.
Streetcar system 990'
Bike/mountain bike hire 0.93mi.
Scuba diving material hire 0.93mi.
Household linens for hire/laundry services 330'
Breadstore 660'
Caterer 660'
Local stores 990'
Supermarket 0.62mi.
Hairdressing salon 0.3mi.
Internet cafe 0.3mi.
Mail office 0.3mi.
Bank 0.62mi.
ATM 0.62mi.
Drugstore 0.5mi.
Doctor 0.3mi.
Nurse 0.3mi.
Hospital 4.5mi.



full bed(s)



kitchen



bunk beds

Interior

- **Receive up to :**

from 1 to 8 person(s)

- **Liveable floor area :**

750 Sq.ft.

- **Interior layout :**

6 Room(s), 2 bedroom(s), 2 shower room, 2 toilets, living room 270 Sq.ft., sitting room 270 Sq.ft., separate kitchen

- **Sleeps - bed(s) :**

1 full bed(s), 1 sleeper sofa(s) 2 pers, 2 bunk beds, 1 baby cradle

- **Guest facilities :**

T.V., hi-fi system, vcr, DVD player, movie collection, t.v points, cable/satelite, wifi, radio alarmclock, hair dryer, electric heating, digipad entry gates

- **Appliances :**

Crockery/flatware, cafetiere, electric coffee maker, electric kettle, toaster, food processor, electric raclette set, meat broiler, electric stove, electric hobs, oven, microwave oven, extractor hood, refridgerator, dish washer, vacuum cleaner, iron, ironing board

Exterior

- **Outside accommodation :**

Terrace 160 Sq.ft., covered terrace 85 Sq.ft., yard shed

- **Outside setting :**

Private courtyard 380 Sq.ft.

- **Outside amenities :**

BBQ, yard table(s), yard seat(s)



shared tennis

Services

- **washing :**

Sheets supplement (+\$9*), Towels supplement (+\$8*), Linen supplement (+\$9*), Comforter (s), Comforter(s), Pillows

- **Single family home :**

Parking

For your guidance

- **For your guidance**

Pets friendly

Cell phone network coverage

Water : hot/cold

Local voltage supply : 220-240V / 50Hz

Electricity supply : mains

- **Handicapped people welcome**

Wheelchair access

Fitted out for the disabled : hard of hearing, mentally



shower room

Photo album - 1



view from the garden/park



kitchen



kitchen



full bed(s)



bunk beds



shower room

Photo album - 2



shared tennis



horse trekking



Outside setting



Outside setting



view over the sea



Streetcar system



leisure pursuits nearby



sailing

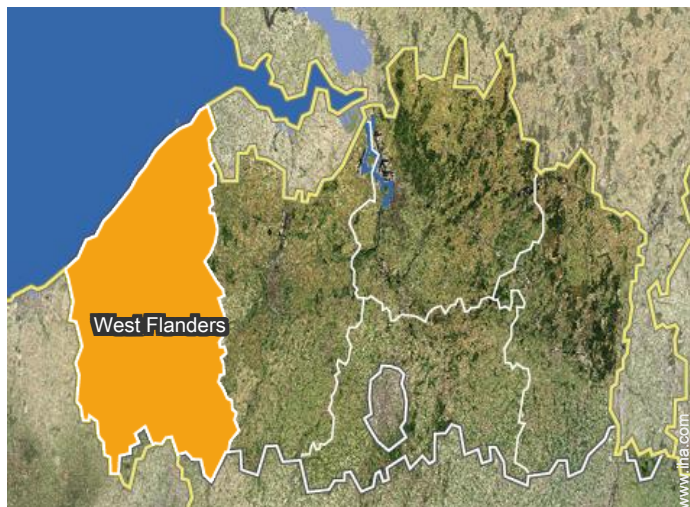


Outside setting



nearby

Location



Location & Access



GPS coordinates in degrees, minutes, seconds: Latitude 51°15'26"N - Longitude 2°59'55"E (Dwelling)

Address

→ Torenhofstraat 2
8420 De Haan

• Freeway (exit) E40

→ Jabbeke, West Flanders, Flanders, Belgium

→ Distance : 4.5mi.

→ Time : 15'

• Railroad station Ostend

→ Ostende, West Flanders, Flanders, Belgium

→ Distance : 8.7mi.

→ Time : 30'

• Sea port Ostende

→ Ostende, West Flanders, Flanders, Belgium

→ Distance : 8.7mi.

→ Time : 30'

• Ostende : (7,5mi.)

• Bruges : (8.7mi.)

• Blankenberge : (4.5mi.)

Contact

Spoken languages



Vacation rental De Haan - Belgium "Dahlia"

7
[Book now](#)

Availability calendar - from : november 2017

| Nov | W | Th | F | Sa | Su | M | Tu | W | Th | F | Sa | Su | M | Tu | W | Th | F | Sa | Su | M | Tu | W | Th | | | | | | | |
|------|---|----|---|----|----|---|----|---|----|----|----|----|----|----|----|----|----|----|----|----|----|----|----|----|----|----|----|----|----|----|
| 2017 | 1 | 2 | 3 | 4 | 5 | 6 | 7 | 8 | 9 | 10 | 11 | 12 | 13 | 14 | 15 | 16 | 17 | 18 | 19 | 20 | 21 | 22 | 23 | 24 | 25 | 26 | 27 | 28 | 29 | 30 |
| | | | | | | | | | | | | | | | | | - | - | - | - | - | - | - | - | - | - | - | - | - | - |

| Dec | F | Sa | Su | M | Tu | W | Th | F | Sa | Su | M | Tu | W | Th | F | Sa | Su | M | Tu | W | Th | F | Sa | Su | | | | | | | |
|------|---|----|----|---|----|---|----|---|----|----|----|----|----|----|----|----|----|----|----|----|----|----|----|----|----|----|----|----|----|----|----|
| 2017 | 1 | 2 | 3 | 4 | 5 | 6 | 7 | 8 | 9 | 10 | 11 | 12 | 13 | 14 | 15 | 16 | 17 | 18 | 19 | 20 | 21 | 22 | 23 | 24 | 25 | 26 | 27 | 28 | 29 | 30 | 31 |
| | - | - | - | - | - | - | - | - | - | - | - | - | - | - | - | - | - | - | - | - | - | - | - | - | - | - | - | - | - | - | |

| Jan | M | Tu | W | Th | F | Sa | Su | M | Tu | W | Th | F | Sa | Su | M | Tu | W | Th | F | Sa | Su | M | Tu | W | | | | | | | |
|------|---|----|---|----|---|----|----|---|----|----|----|----|----|----|----|----|----|----|----|----|----|----|----|----|----|----|----|----|----|----|----|
| 2018 | 1 | 2 | 3 | 4 | 5 | 6 | 7 | 8 | 9 | 10 | 11 | 12 | 13 | 14 | 15 | 16 | 17 | 18 | 19 | 20 | 21 | 22 | 23 | 24 | 25 | 26 | 27 | 28 | 29 | 30 | 31 |
| | - | - | - | - | - | - | - | - | - | - | - | - | - | - | - | - | - | - | - | - | - | - | - | - | - | - | - | - | - | - | |

| Feb | Th | F | Sa | Su | M | Tu | W | Th | F | Sa | Su | M | Tu | W | Th | F | Sa | Su | M | Tu | W | | | | | | | | |
|------|----|---|----|----|---|----|---|----|---|----|----|----|----|----|----|----|----|----|----|----|----|----|----|----|----|----|----|----|---|
| 2018 | 1 | 2 | 3 | 4 | 5 | 6 | 7 | 8 | 9 | 10 | 11 | 12 | 13 | 14 | 15 | 16 | 17 | 18 | 19 | 20 | 21 | 22 | 23 | 24 | 25 | 26 | 27 | 28 | |
| | - | - | - | - | - | - | - | - | - | - | - | - | - | - | - | - | - | - | - | - | - | - | - | - | - | - | - | - | - |

| Mar | Th | F | Sa | Su | M | Tu | W | Th | F | Sa | Su | M | Tu | W | Th | F | Sa | Su | M | Tu | W | Th | F | Sa | | | | | | | |
|------|----|---|----|----|---|----|---|----|---|----|----|----|----|----|----|----|----|----|----|----|----|----|----|----|----|----|----|----|----|----|----|
| 2018 | 1 | 2 | 3 | 4 | 5 | 6 | 7 | 8 | 9 | 10 | 11 | 12 | 13 | 14 | 15 | 16 | 17 | 18 | 19 | 20 | 21 | 22 | 23 | 24 | 25 | 26 | 27 | 28 | 29 | 30 | 31 |
| | - | - | - | - | - | - | - | - | - | - | - | - | - | - | - | - | - | - | - | - | - | - | - | - | - | - | - | - | - | - | |

| Apr | Su | M | Tu | W | Th | F | Sa | Su | M | Tu | W | Th | F | Sa | Su | M | Tu | W | Th | F | Sa | Su | M | | | | | | | |
|------|----|---|----|---|----|---|----|----|---|----|----|----|----|----|----|----|----|----|----|----|----|----|----|----|----|----|----|----|----|----|
| 2018 | 1 | 2 | 3 | 4 | 5 | 6 | 7 | 8 | 9 | 10 | 11 | 12 | 13 | 14 | 15 | 16 | 17 | 18 | 19 | 20 | 21 | 22 | 23 | 24 | 25 | 26 | 27 | 28 | 29 | 30 |
| | - | - | - | - | - | - | - | - | - | - | - | - | - | - | - | - | - | - | - | - | - | - | - | - | - | - | - | - | - | - |

| May | Tu | W | Th | F | Sa | Su | M | Tu | W | Th | F | Sa | Su | M | Tu | W | Th | F | Sa | Su | M | Tu | W | Th | | | | | | | |
|------|----|---|----|---|----|----|---|----|---|----|----|----|----|----|----|----|----|----|----|----|----|----|----|----|----|----|----|----|----|----|----|
| 2018 | 1 | 2 | 3 | 4 | 5 | 6 | 7 | 8 | 9 | 10 | 11 | 12 | 13 | 14 | 15 | 16 | 17 | 18 | 19 | 20 | 21 | 22 | 23 | 24 | 25 | 26 | 27 | 28 | 29 | 30 | 31 |
| | - | - | - | - | - | - | - | - | - | - | - | - | - | - | - | - | - | - | - | - | - | - | - | - | - | - | - | - | - | - | |

| June | F | Sa | Su | M | Tu | W | Th | F | Sa | Su | M | Tu | W | Th | F | Sa | Su | M | Tu | W | Th | F | Sa | | | | | | | |
|------|---|----|----|---|----|---|----|---|----|----|----|----|----|----|----|----|----|----|----|----|----|----|----|----|----|----|----|----|----|----|
| 2018 | 1 | 2 | 3 | 4 | 5 | 6 | 7 | 8 | 9 | 10 | 11 | 12 | 13 | 14 | 15 | 16 | 17 | 18 | 19 | 20 | 21 | 22 | 23 | 24 | 25 | 26 | 27 | 28 | 29 | 30 |
| | - | - | - | - | - | - | - | - | - | - | - | - | - | - | - | - | - | - | - | - | - | - | - | - | - | - | - | - | - | - |

| Jul | Su | M | Tu | W | Th | F | Sa | Su | M | Tu | W | Th | F | Sa | Su | M | Tu | W | Th | F | Sa | Su | M | Tu | | | | | | | |
|------|----|---|----|---|----|---|----|----|---|----|----|----|----|----|----|----|----|----|----|----|----|----|----|----|----|----|----|----|----|----|----|
| 2018 | 1 | 2 | 3 | 4 | 5 | 6 | 7 | 8 | 9 | 10 | 11 | 12 | 13 | 14 | 15 | 16 | 17 | 18 | 19 | 20 | 21 | 22 | 23 | 24 | 25 | 26 | 27 | 28 | 29 | 30 | 31 |
| | - | - | - | - | - | - | - | - | - | - | - | - | - | - | - | - | - | - | - | - | - | - | - | - | - | - | - | - | - | - | |

| Aug | W | Th | F | Sa | Su | M | Tu | W | Th | F | Sa | Su | M | Tu | W | Th | F | Sa | Su | M | Tu | W | Th | F | | | | | | | |
|------|---|----|---|----|----|---|----|---|----|----|----|----|----|----|----|----|----|----|----|----|----|----|----|----|----|----|----|----|----|----|----|
| 2018 | 1 | 2 | 3 | 4 | 5 | 6 | 7 | 8 | 9 | 10 | 11 | 12 | 13 | 14 | 15 | 16 | 17 | 18 | 19 | 20 | 21 | 22 | 23 | 24 | 25 | 26 | 27 | 28 | 29 | 30 | 31 |
| | - | - | - | - | - | - | - | - | - | - | - | - | - | - | - | - | - | - | - | - | - | - | - | - | - | - | - | - | - | - | |

Vacation rental
West Flanders - Flanders
"Dahlia"

8
[Book now](#)

Availability calendar - from : august 2018

| Sep | Sa | Su | M | Tu | W | Th | F | Sa | Su | M | Tu | W | Th | F | Sa | Su | M | Tu | W | Th | F | Sa | Su | M | Tu | W | Th | F | Sa | Su |
|------|----|----|---|----|---|----|---|----|----|----|----|----|----|----|----|----|----|----|----|----|----|----|----|----|----|----|----|----|----|----|
| 2018 | 1 | 2 | 3 | 4 | 5 | 6 | 7 | 8 | 9 | 10 | 11 | 12 | 13 | 14 | 15 | 16 | 17 | 18 | 19 | 20 | 21 | 22 | 23 | 24 | 25 | 26 | 27 | 28 | 29 | 30 |
| - | - | - | - | - | - | - | - | - | - | - | - | - | - | - | - | - | - | - | - | - | - | - | - | - | - | - | - | - | - | - |

| Oct | M | Tu | W | Th | F | Sa | Su | M | Tu | W | Th | F | Sa | Su | M | Tu | W | Th | F | Sa | Su | M | Tu | W | Th | F | Sa | Su | M | Tu | W |
|------|---|----|---|----|---|----|----|---|----|----|----|----|----|----|----|----|----|----|----|----|----|----|----|----|----|----|----|----|----|----|----|
| 2018 | 1 | 2 | 3 | 4 | 5 | 6 | 7 | 8 | 9 | 10 | 11 | 12 | 13 | 14 | 15 | 16 | 17 | 18 | 19 | 20 | 21 | 22 | 23 | 24 | 25 | 26 | 27 | 28 | 29 | 30 | 31 |
| - | - | - | - | - | - | - | - | - | - | - | - | - | - | - | - | - | - | - | - | - | - | - | - | - | - | - | - | - | - | - | - |

[Month : Next >>](#)

Rental rates - Apartment-Flat - from 1 to 8 Person(s)

| Rates | Night | Weekend | week | 2 weeks | Month |
|--|-------|---------|----------------------|---------|-------|
|  Low season | - | \$170* | \$381* | - | - |
|  High season | - | - | \$833* (Saturday) | - | - |

(Check-in day)

[Book now](#)

Booking conditions

• Reservation

- Payment made upon reservation : 35% of rental sum
- Payment balance : 1 month before the stay
- Deposit required : \$170*

• rentals

- Day tax included

Accepted methods of payment

- Bank transfer (wire)

[▶ Book now](#)

[▶ Contact the owner](#)

Contact directly the property owners

www.iha.com
Advert No.
55927
[>> Book now <<](#)

Contact

Spoken languages



* Converted at the rate indicated : €100 = \$117.29 = £89.59

Advert No. 55927

www.iha.com

