

Vacation rental Dubrovnik "Lele and aDora"

What make my apartment special. For sure that is host. On coming date I bring to my guests wellcome drink. They can choose what they prefer : fruit juice, red or black wine, beer, something strong as brandy (travarica).



Apartment-Flat first floor, separate entrance, in(on) a(an) House 2 floors

Setting : ocean, historical

Capacity : from 2 to 4 person(s)

Bedroom(s) : 1

Room(s) : 2



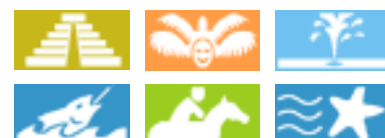
Gay friendly ()
Family Holiday Destinations ()

Dubrovnik - Dubrovnik Neretva County - Dalmatia
Croatia

Reservation : +385 (0) 20 312541 (Croatia)

Advert No. 66781

www.iha.com



Vacation rental



Apartment-Flat first floor, separate entrance, in(on) a(an) House 2 floors

- **Ideal for family groups, couples**
- **View :** sea/ocean, garden/park, harbour, city, monument, fantastic sunset
- **Setting :** ocean, historical
- **Exposure :** South-west

" Apartment consists of coridor, bathroom, bedroom, living room with kitchen and terrace. In bedroom is one double bed and in living room there are 2 sofa beds (for one person). Terrace view is garden. Interior is very simply and modern. Kitchen is full equiped. Linen, towels, and all necessary things are included. "

Assets

- **baby equipment :**
High chair, baby potty



the apartment house/building

Surroundings & location



" Families with kids like my apartment because they have large terrace for kids, some small help things for children: smal stand for bathroom, high chair for table, smal bed, smal playground basket, toys, plastic mattresses for the beach, beach towels... "

Leisure

- **Leisure activities less than 12 miles :**
Bathing, banana boat, water skiing, surfing, sailing, canoeing, rafting, tennis, mountain bike (path), boat trips, fishing, fishing
- **Supervised :**
Tennis school
- **Attractions and relaxation :**
Bar/pub, discotheque, restaurant, movie theater, open air summer movie theater, park and garden, nature reserve, exhibition center, art gallery, historical site, museum, theater, summer theater, festivals, casino, sauna, health spa, fitness center

Surroundings

- **Locality :**
Sea/ocean 660'
Sandy beach 0.3mi.
Shingle beach 0.3mi.
Rocky beach 0.3mi.
Public tennis court 990'
Marina 660'
- **Amenities :**
Downtown 1.5mi.
Bus stop / bus station 330'
Car rental 660'
Boat rental 660'
Breadstore <165'
Local stores <165'
Supermarket 660'
Hairdressing salon 660'
Mail office 660'
Bank 660'
ATM 660'
Drugstore 990'
Doctor 660'
Hospital 0.3mi.



View



living room



historical site

Exterior

- **Outside accommodation :**
Covered terrace 130 Sq.ft.
- **Outside setting :**
Private courtyard 130 Sq.ft.
- **Outside amenities :**
BBQ, yard table(s), 4 yard seat(s)



Culture

Interior

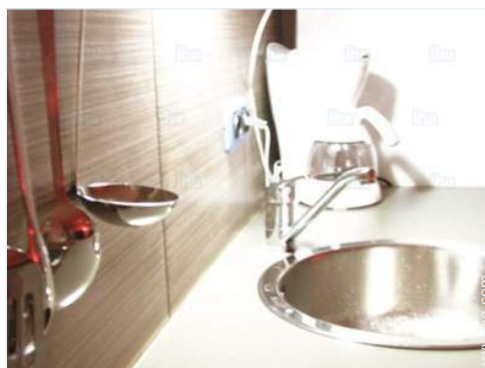
- **Receive up to :**
from 2 to 4 person(s) (2 adults, 2 kids)
- **Liveable floor area :**
430 Sq.ft.
- **Interior layout :**
2 Room(s), 1 bedroom(s), sleeping den, 1 shower room, living room 237 Sq.ft., sitting room 120 Sq.ft., Kitchen Area, dining area, tv den, loggia
- **Sleeps - bed(s) :**
1 king-size bed(s), 2 sleeper sofa(s) 1 pers, 1 baby cradle
- **Guest facilities :**
T.V., cable/satelite, wifi, cupboard, Hanging wardrobe, safe deposit box, hair dryer, mosquito nets, fly screens, partly air-conditioned, ceiling paddle fan, electric heating, Blinds
- **Appliances :**
Kitchen utensils, electric coffee maker, electric kettle, toaster, electric stove, microwave oven, refrigerator, deep freeze, dish washer, washing machine, vacuum cleaner, iron, ironing board

Services

- **Single family home :**
Cleaning on departure, Parking supplement, Airport transfers supplement (+\$35*)
- **Restauration :**
Breakfast supplement (+\$12*)

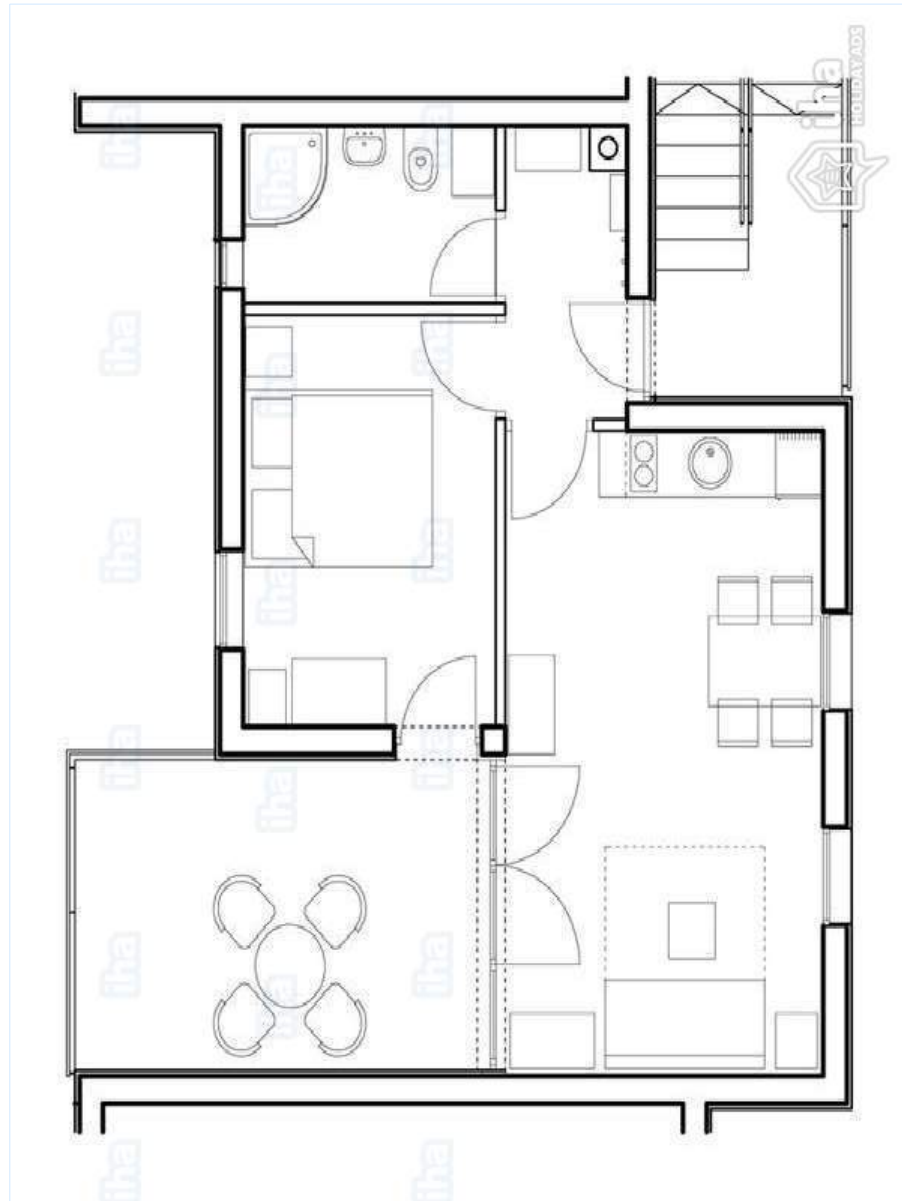
For your guidance

- **For your guidance**
Kids welcome
Water : hot/cold
Local voltage supply : 220-240V / 50Hz
Electricity supply : mains



Kitchen Area

Floor plan



www.iha.com

Photo album - 1



the apartment house/building



living room



View



historical site



Kitchen Area

Photo album - 2



Culture



shower room



master bedroom



bedroom



living room




shower room

Location



Location & Access

" My arrea is Peninsula Lapad, the most beautiful part for living. All main things you will find here. The See is at 100 m distance, top beach in only 7 minutes walking. Tennis court is on 5 minutes walking. "

 GPS coordinates in degrees, minutes, seconds: Latitude 42°39'25"N - Longitude 18° 4'42"E ([Dwelling](#))

Address

→ Kneza Domagoja 1D
20000 Dubrovnik

• Airport Dubrovnik

→ Dubrovnik, Dubrovnik Neretva County,
Dalmatia, Croatia

→ Distance : 13mi.

→ Time : 30'

• Dubrovnik : (1.5mi.)

Contact

Spoken
languages



Vacation rental
Dubrovnik Neretva County - Dalmatia
"Lele and aDora"

8
[Book now](#)

Availability calendar - from : november 2018

Nov	Th	F	Sa	Su	M	Tu	W	Th	F	Sa	Su	M	Tu	W	Th	F	Sa	Su	M	Tu	W	Th	F	Sa	Su	M	Tu	W	Th	F
2018	1	2	3	4	5	6	7	8	9	10	11	12	13	14	15	16	17	18	19	20	21	22	23	24	25	26	27	28	29	30

Dec	Sa	Su	M	Tu	W	Th	F	Sa	Su	M	Tu	W	Th	F	Sa	Su	M	Tu	W	Th	F	Sa	Su	M	Tu	W	Th	F	Sa	Su	M
2018	1	2	3	4	5	6	7	8	9	10	11	12	13	14	15	16	17	18	19	20	21	22	23	24	25	26	27	28	29	30	31
	-	-	-	-	-	-	-	-	-	-	-	-	-	-	-	-	-	-	-	-	-	-	-	-	-	-	-	-	-	-	

Jan	Tu	W	Th	F	Sa	Su	M	Tu	W	Th	F	Sa	Su	M	Tu	W	Th	F	Sa	Su	M	Tu	W	Th	F	Sa	Su	M	Tu	W	Th
2019	1	2	3	4	5	6	7	8	9	10	11	12	13	14	15	16	17	18	19	20	21	22	23	24	25	26	27	28	29	30	31
	-	-	-	-	-	-	-	-	-	-	-	-	-	-	-	-	-	-	-	-	-	-	-	-	-	-	-	-	-	-	

Feb	F	Sa	Su	M	Tu	W	Th	F	Sa	Su	M	Tu	W	Th	F	Sa	Su	M	Tu	W	Th							
2019	1	2	3	4	5	6	7	8	9	10	11	12	13	14	15	16	17	18	19	20	21	22	23	24	25	26	27	28
	-	-	-	-	-	-	-	-	-	-	-	-	-	-	-	-	-	-	-	-	-	-	-	-	-	-	-	

Mar	F	Sa	Su	M	Tu	W	Th	F	Sa	Su	M	Tu	W	Th	F	Sa	Su	M	Tu	W	Th	F	Sa	Su	M	Tu	W	Th	F	Sa	Su
2019	1	2	3	4	5	6	7	8	9	10	11	12	13	14	15	16	17	18	19	20	21	22	23	24	25	26	27	28	29	30	31
	-	-	-	-	-	-	-	-	-	-	-	-	-	-	-	-	-	-	-	-	-	-	-	-	-	-	-	-	-	-	

Apr	M	Tu	W	Th	F	Sa	Su	M	Tu	W	Th	F	Sa	Su	M	Tu	W	Th	F	Sa	Su	M	Tu	W	Th	F	Sa	Su	M	Tu
2019	1	2	3	4	5	6	7	8	9	10	11	12	13	14	15	16	17	18	19	20	21	22	23	24	25	26	27	28	29	30
	-	-	-	-	-	-	-	-	-	-	-	-	-	-	-	-	-	-	-	-	-	-	-	-	-	-	-	-	-	

May	W	Th	F	Sa	Su	M	Tu	W	Th	F	Sa	Su	M	Tu	W	Th	F	Sa	Su	M	Tu	W	Th	F	Sa	Su	M	Tu	W	Th	F
2019	1	2	3	4	5	6	7	8	9	10	11	12	13	14	15	16	17	18	19	20	21	22	23	24	25	26	27	28	29	30	31
	-	-	-	-	-	-	-	-	-	-	-	-	-	-	-	-	-	-	-	-	-	-	-	-	-	-	-	-	-	-	

June	Sa	Su	M	Tu	W	Th	F	Sa	Su	M	Tu	W	Th	F	Sa	Su	M	Tu	W	Th	F	Sa	Su							
2019	1	2	3	4	5	6	7	8	9	10	11	12	13	14	15	16	17	18	19	20	21	22	23	24	25	26	27	28	29	30
	-	-	-	-	-	-	-	-	-	-	-	-	-	-	-	-	-	-	-	-	-	-	-	-	-	-	-	-	-	

Jul	M	Tu	W	Th	F	Sa	Su	M	Tu	W	Th	F	Sa	Su	M	Tu	W	Th	F	Sa	Su	M	Tu	W	Th	F	Sa	Su	M	Tu	W
2019	1	2	3	4	5	6	7	8	9	10	11	12	13	14	15	16	17	18	19	20	21	22	23	24	25	26	27	28	29	30	31
	-	-	-	-	-	-	-	-	-	-	-	-	-	-	-	-	-	-	-	-	-	-	-	-	-	-	-	-	-	-	

Aug	Th	F	Sa	Su	M	Tu	W	Th	F	Sa	Su	M	Tu	W	Th	F	Sa	Su	M	Tu	W	Th	F	Sa	Su	M	Tu	W	Th	F	Sa
2019	1	2	3	4	5	6	7	8	9	10	11	12	13	14	15	16	17	18	19	20	21	22	23	24	25	26	27	28	29	30	31
	-	-	-	-	-	-	-	-	-	-	-	-	-	-	-	-	-	-	-	-	-	-	-	-	-	-	-	-	-	-	

 Reserved

Vacation rental
Dubrovnik - Croatia
"Lele and aDora"

9

[Book now](#)

Availability calendar - from : august 2019

Sep	Su	M	Tu	W	Th	F	Sa	Su	M	Tu	W	Th	F	Sa	Su	M	Tu	W	Th	F	Sa	Su	M							
2019	1	2	3	4	5	6	7	8	9	10	11	12	13	14	15	16	17	18	19	20	21	22	23	24	25	26	27	28	29	30
-	-	-	-	-	-	-	-	-	-	-	-	-	-	-	-	-	-	-	-	-	-	-	-	-	-	-	-	-	-	

Oct	Tu	W	Th	F	Sa	Su	M	Tu	W	Th	F	Sa	Su	M	Tu	W	Th	F	Sa	Su	M	Tu	W	Th							
2019	1	2	3	4	5	6	7	8	9	10	11	12	13	14	15	16	17	18	19	20	21	22	23	24	25	26	27	28	29	30	31
-	-	-	-	-	-	-	-	-	-	-	-	-	-	-	-	-	-	-	-	-	-	-	-	-	-	-	-	-	-		

Reserved

[Month : Next >>](#)

Rental rates - Apartment-Flat - from 2 to 4 Person(s)

Rates	Night	Weekend	week	2 weeks	Month
<input type="checkbox"/> Mid season	\$93* > 2	\$93*	\$654*	\$1309*	\$2337*
<input type="checkbox"/> High season	\$164* > 3	\$164*	\$1145*	\$2290*	\$4674*

> Minimum Night

[Book now](#)

Booking conditions

• Reservation

→ Payment made upon reservation :
20% of rental sum
→ Payment balance :
10 days before the stay

• rentals

→ Service charges included
→ Day tax included
→ Cleaning charge on departure included
→ Anticipated supplement for :
- baby
- supplementary bed(s)

Accepted methods of payment

• Cash

[▶ Book now](#)

[▶ Contact the owner](#)

Contact directly the property owners

www.iha.com

Advert No.

66781

[>> Book now <<](#)

Contact

Spoken languages



* Converted at the rate indicated : €100 = \$116.85 = £89

Advert No. 66781

www.iha.com



[>> VACATION HOMES](#)

DIRECT BY OWNERS