

# Vacation rental Florence Apartment-Flat

Elegant Refurbished Apartment In Florence. Free Wifi. A/C, Elevator. Close to city centre yet far from the noise!



**Apartment-Flat** 2nd floor, separate entrance, in(on) a(an) Apartment house/building 4 floors

Setting : cultural, medieval

Capacity : from 1 to 7 person(s)

Bedroom(s) : 3

Room(s) : 8

Florence - Florence Province (FI) - Tuscany

Italy

Reservation : +44 (0) 7469672114 (United Kingdom)

[www.iha.com](http://www.iha.com)

Advert No. 65218



>> VACATION HOMES

DIRECT BY OWNERS

## Vacation rental



Apartment-Flat 2nd floor, separate entrance, in(on) a(an) Apartment house/building 4 floors

- **Ideal for all age groups, family groups**
- **View :** panoramic, unobscured, city, monument
- **Setting :** cultural, medieval
- **Exposure :** South-west

" LISTING! Elegant and comfortable apartment close to the city centre just outside the ZTL area, therefore, hassle free if you have a car. We are at a 15 minute walking distance from city centre and 25 minutes walking distance from Duomo, Uffizzi Gallery, Piazza Signoria, Statue of David, Ponte Vecchio etc and great shopping too! You can take the bus if you prefer. It is a pleasant walk with pastry shops and coffee bars along the way. The apartment is spacious, airy and bright. There is a baker, butcher, laundromat, wine-shop, grocery store close by. Very convenient and ideal location far from the noise but at walking distance from all attractions. The beautiful Villa Fabbricotti, Stibbert Park and Museum is right behind us and at walking distance to Giardino del'Orticoltura with its beautiful conservatory. Our apartment has been newly refurbished. We used high quality fixtures through out. It is elegant and comfortable with up-to-date amenities. Brand new designer bathrooms with new fixtures. The spacious double living room has a large sofa bed and can be closed with sliding doors. This offers complete privacy and is used as the 3rd bedroom. The master bedroom has an en suite bathroom. The other bathroom is in the hallway. The apartment has 2 balconies and has a spacious feeling. Unlimited Wifi access, air conditioning, linen and taxes are all included. There are NO hidden costs. "

## Assets

- **baby equipment :**

Playpen

## Surroundings & location



City



Culture

" Car: not necessary. Florence is one of the most stunning and well known cities in the world. It offers great food and wine and has breathtaking history, art and architecture. It is perfect for a short city break or longer stay all year around. The small airport so close to the city and the proximity to the train station is ideal. Shopping is fantastic in this city where most of the world's renowned designers come from! Please don't forget Fiesole which is a jewel with the most amazing views. Florence is close to Pisa, San Gimignano, Siena, Lucca, the Chianti wine region etc. This makes for perfect day trips. The proximity of the high speed train makes it easy to go to Rome and Venice too. "

## Leisure

- **Leisure activities less than 12 miles :**

Canoeing, golf, tennis

- **Supervised :**

Tennis school, riding school

- **Attractions and relaxation :**

Bar/pub, discotheque, restaurant, movie theater, park and garden, art gallery, historical site, museum, theater, summer theater, opera house, festivals, antiques & bric-a-brac, local craftstore, cellar and wine tasting, health spa, fitness center

## Surroundings

- **Locality :**

Public swimming pool 1.25mi.  
Public tennis court 1.25mi.

- **Amenities :**

Village center <165'  
Downtown 0.3mi.  
Bus stop / bus station <165'  
Bike/mountain bike hire 165'  
Car rental 1.25mi.  
Household linens for hire/laundry services <165'  
Breadstore <165'  
Local stores <165'  
Supermarket <165'  
High class retailers 0.62mi.  
Hairdressing salon 660'  
ATM 660'  
Drugstore 660'  
Doctor 660'  
Hospital 1.25mi.



Kitchen Area



Interior layout and facilities

Advert No. 65218

[www.iha.com](http://www.iha.com)





Kitchen Area

### Exterior

- Outside accommodation :  
Balcony 21.5 Sq.ft



master bedroom

### Interior

- Receive up to :  
from 1 to 7 person(s) (4 adults, 3 kids)
- Liveable floor area :  
1,300 Sq.ft.
- Interior layout :  
8 Room(s), 3 bedroom(s), 2 bathroom, shower room, 2 toilets, separate kitchen, dining area, reception hall, veranda
- Sleeps - bed(s) :  
3 full bed(s), 2 king-size bed(s), 1 sleeper sofa(s) 2 pers, 1 twin bed(s)
- Guest facilities :  
Elevator, T.V., hi-fi system, DVD player, board games, book collection, movie collection, cable/satelite, wifi, wardrobe, cupboard, Hanging wardrobe, hair dryer, heated towel rail, mosquito nets, fully air-conditioned, central heating, Drapes, Blinds, Double glazed, Rolling shutters
- Appliances :  
Crockery/flatware, kitchen utensils, cafetiere, electric coffee maker, toaster, juicer, food processor, gaz stove, oven, micro-wave oven, refridgerator, deep freeze, dish washer, washing machine, clothes dryer, vacuum cleaner, iron, ironing board

### Services

- washing :  
Sheets, Towels, Linen, Pillows
- Single family home :  
Cleaning on departure supplement (+\$47\*)

### For your guidance

- For your guidance  
Kids welcome  
No pet allowed  
Non smoking rental, cell phone network coverage



view from the balcony

Photo album - 1



Interior layout and facilities



Kitchen Area

Kitchen Area



view from the balcony



master bedroom

Photo album - 2



master bedroom



large bedroom



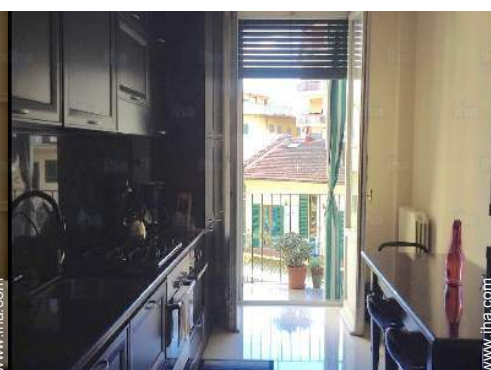
sleeper sofa(s) 2 pers



bedroom



bedroom



View from the property



reception hall



bathroom



view of a monument



view of the city



Attractions and relaxation



reception hall

## Location



## Location & Access

" We are located outside the central area and within 15 minutes walking distance from the centre. Very peaceful and away from the noise yet close to all the sites. We are close to beautiful parks. Check in time is at 4 pm and check out is before 10:30 am. If you require different times, please let us know and we will do our best. "



GPS coordinates in degrees, minutes, seconds: Latitude 43°47'20"N - Longitude 11°15'18"E ([Dwelling](#))

### Address

→ Via Melchiorre Gioia, 9  
50100 Florence

• Florence : (0.62mi.)

### • Airport Florence Amerigo Vespucci

→ Florence, Florence Province, Tuscany,  
Italy  
→ Distance : 3mi.  
→ Time : 10'

### • Railroad station Firenze Santa Maria Novella

→ Florence, Florence Province, Tuscany,  
Italy  
→ Distance : 1.85mi.  
→ Time : 10'

## Contact

Spoken  
languages



Vacation rental  
 Florence - Italy  
**Apartment-Flat**

7  
[Book now](#)

Availability calendar - from : december 2017

Dec	F	Sa	Su	M	Tu	W	Th	F	Sa	Su	M	Tu	W	Th	F	Sa	Su	M	Tu	W	Th	F	Sa	Su							
2017	1	2	3	4	5	6	7	8	9	10	11	12	13	14	15	16	17	18	19	20	21	22	23	24	25	26	27	28	29	30	31

Jan	M	Tu	W	Th	F	Sa	Su	M	Tu	W	Th	F	Sa	Su	M	Tu	W	Th	F	Sa	Su	M	Tu	W	Th	F	Sa	Su	M	Tu	W	
2018	1	2	3	4	5	6	7	8	9	10	11	12	13	14	15	16	17	18	19	20	21	22	23	24	25	26	27	28	29	30	31	

Feb	Th	F	Sa	Su	M	Tu	W	Th	F	Sa	Su	M	Tu	W	Th	F	Sa	Su	M	Tu	W										
2018	1	2	3	4	5	6	7	8	9	10	11	12	13	14	15	16	17	18	19	20	21	22	23	24	25	26	27	28			

Mar	Th	F	Sa	Su	M	Tu	W	Th	F	Sa	Su	M	Tu	W	Th	F	Sa	Su	M	Tu	W	Th	F	Sa							
2018	1	2	3	4	5	6	7	8	9	10	11	12	13	14	15	16	17	18	19	20	21	22	23	24	25	26	27	28	29	30	31

Apr	Su	M	Tu	W	Th	F	Sa	Su	M	Tu	W	Th	F	Sa	Su	M	Tu	W	Th	F	Sa	Su	M	Tu	W	Th	F	Sa	Su	M	
2018	1	2	3	4	5	6	7	8	9	10	11	12	13	14	15	16	17	18	19	20	21	22	23	24	25	26	27	28	29	30	

May	Tu	W	Th	F	Sa	Su	M	Tu	W	Th	F	Sa	Su	M	Tu	W	Th	F	Sa	Su	M	Tu	W	Th	F	Sa	Su	M	Tu	W	Th	
2018	1	2	3	4	5	6	7	8	9	10	11	12	13	14	15	16	17	18	19	20	21	22	23	24	25	26	27	28	29	30	31	

June	F	Sa	Su	M	Tu	W	Th	F	Sa	Su	M	Tu	W	Th	F	Sa	Su	M	Tu	W	Th	F	Sa								
2018	1	2	3	4	5	6	7	8	9	10	11	12	13	14	15	16	17	18	19	20	21	22	23	24	25	26	27	28	29	30	

Jul	Su	M	Tu	W	Th	F	Sa	Su	M	Tu	W	Th	F	Sa	Su	M	Tu	W	Th	F	Sa	Su	M	Tu	W	Th	F	Sa	Su	M	Tu	
2018	1	2	3	4	5	6	7	8	9	10	11	12	13	14	15	16	17	18	19	20	21	22	23	24	25	26	27	28	29	30	31	

Aug	W	Th	F	Sa	Su	M	Tu	W	Th	F	Sa	Su	M	Tu	W	Th	F	Sa	Su	M	Tu	W	Th	F	Sa	Su	M	Tu	W	Th	F	
2018	1	2	3	4	5	6	7	8	9	10	11	12	13	14	15	16	17	18	19	20	21	22	23	24	25	26	27	28	29	30	31	

Sep	Sa	Su	M	Tu	W	Th	F	Sa	Su	M	Tu	W	Th	F	Sa	Su	M	Tu	W	Th	F	Sa	Su									
2018	1	2	3	4	5	6	7	8	9	10	11	12	13	14	15	16	17	18	19	20	21	22	23	24	25	26	27	28	29	30		

 Reserved



Vacation rental  
 Florence Province - Tuscany  
**Apartment-Flat**

8  
[Book now](#)

Availability calendar - from : september 2018

Oct	M	Tu	W	Th	F	Sa	Su	M	Tu	W	Th	F	Sa	Su	M	Tu	W	Th	F	Sa	Su	M	Tu	W							
2018	1	2	3	4	5	6	7	8	9	10	11	12	13	14	15	16	17	18	19	20	21	22	23	24	25	26	27	28	29	30	31
-	-	-	-	-	-	-	-	-	-	-	-	-	-	-	-	-	-	-	-	-	-	-	-	-	-	-	-	-	-	-	

Nov	Th	F	Sa	Su	M	Tu	W	Th	F	Sa	Su	M	Tu	W	Th	F	Sa	Su	M	Tu	W	Th	F							
2018	1	2	3	4	5	6	7	8	9	10	11	12	13	14	15	16	17	18	19	20	21	22	23	24	25	26	27	28	29	30
-	-	-	-	-	-	-	-	-	-	-	-	-	-	-	-	-	-	-	-	-	-	-	-	-	-	-	-	-	-	

Reserved

[Month : Next >>](#)

Rental rates - Apartment-Flat - from 1 to 7 Person(s)

Rates	Night	Weekend	week	2 weeks	Month
<input type="checkbox"/> Mid season	\$141* > 3	-	\$821*	-	-
<input type="checkbox"/> High season	\$152* > 3	-	\$938*	-	-

> Minimum Night

[Book now](#)

Booking conditions

• Reservation

- Payment made upon reservation : 30% of rental sum
- Payment balance : 2 weeks before the stay
- Deposit required : \$235\*

• rentals

- Service charges included
- Day tax included
- Cleaning charge levy on departure : \$53\*

[▶ Book now](#)

[▶ Contact the owner](#)

Accepted methods of payment

- Bank transfer (wire) • PayPal

Contact directly the property owners

[www.iha.com](http://www.iha.com)  
**Advert No.**  
**65218**  
 >> [Book now](#) <<

Contact

Spoken languages



\* Converted at the rate indicated : €100 = \$117.29 = £89.59

Advert No. 65218

[www.iha.com](http://www.iha.com)

