

Vacation rental Fort Mahon Plage Town House

Ideal for your family holidays, internships, seminars 2-24 places in a large home Picardy, all comfort.



Town House, attached home, 2 floors, separate entrance, in(on) a(an) Private property

Setting : ocean

Capacity : from 1 to 20 person(s)

Bedroom(s) : 6

Room(s) : 12

Fort Mahon Plage - Somme (80) - Picardy

France

Reservation : +679 (33) 321596485 (Fiji)

Advert No. 17898

www.ihacom



Vacation rental



Town House, attached home, 2 floors, separate entrance, in(on) a(an) Private property

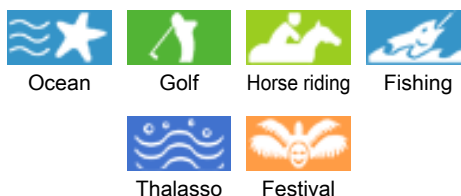
- Ideal for family groups, group
- View : sea/ocean, city, street/avenue, fantastic sunset
- Setting : ocean
- Exposure : South

" Of a great House Picarde 6 completely independent apartments that can be privatized fully or leased by various families from the studio for 1 or 2 person in the grand appartement du SOE floor of 4 to 8 people. There are: 2 studios on the first floor with each click - Clack for 2 persons, shower, WC, TV, Kitchenette. 3 one-bedroom one first and 2 on the second floor with each, 1 bedroom with 2 beds 1 person and in the dining room: click - sofa bed for 2 persons, shower, toilet, TV, kitchen. The large apartment of ESPs floor with 1 bedroom with 1 bed 2 persons and 1 room with 2 beds, a dining - room kitchen equipped and 2 sofas clicclacs in room + a LCD of 1.20 m for your broadcast of photos (take your devices with cables), movies of family or seminars + a terrace of 100 m 2, tiled with a barbecue at your disposal."

Assets

- Parking :
Parking uncovered : 6 off road.
- baby equipment :
Infant tub

Surroundings & location



" (1) land sailing and kayaking in Eolia in Bay 2) sailing to AWAKENINGS in Bay 3 school Aquaclub's beautiful Dunes at 800 m 4) Train + boat in BAIE de Somme: Le Crotoy => ST Valéry by train to steam size real then return by boat 5) discovery of nature and birds in the Park of Marquenterre) 6) Circuit bikes : bring your bikes or rent in the front of the Gîtes, 7) Golf at the golf of beautiful Dunes at 1000 m 8) riding with accommodation of your 9 horses) hikes of 1 to 10 km, + seals approach sum10 Bay crossings) Tai chi, Qi Gong 11) relaxation therapy, massages, 12) fighting forest laser games: Opal lazer 13) Guides accompanying you on sites of memory and histoire.14) EVGF : introduction to Salsa between girls (to cottages, indoor Lens or Paris), Lazergame, + sumo, Paintball, the Multigame in Berck...(15) be the hostess of Chantal which will organize a sale of women's clothing..."

Leisure

- Leisure activities less than 12 miles :
Bathing, pedalo, jet ski, windsurfing, sailing, kite surfing, canoeing, golf, tennis, riding school, pony club, pathway/broadwalk, coastal/forest paths, hiking, rappel, mountain bike (path), sand yachting, boat trips, horse trekking, mini-golf, go-karting, hunting, acrobanch, fishing, pétanque field
- Supervised :
Sailing school, tennis school, riding school
- Attractions and relaxation :
Bar/pub, discotheque, restaurant, open air summer movie theater, park and garden, leisure park, nature reserve, historical site, museum, summer theater, festivals, antiques & bric-a-brac, local craftstore, casino, race track, thalassotherapy center, sauna, steam baths, health spa

Surroundings

- Locality :
Sea/ocean
Sandy beach
Public swimming pool 0.62mi.
Public tennis court 660'
18 hole golf course 0.62mi.
Watersports centre 0.62mi.
River
Stretch of water
Forest
- Amenities :

Downtown <165'
Bike/mountain bike hire 0.3mi.
Boat rental 0.62mi.
Breadstore <165'
Caterer 330'
Local stores <165'
Supermarket 0.62mi.
Hairdressing salon <165'
Mail office 165'
Bank 330'
ATM <165'
Drugstore 660'
Doctor 660'
Nurse 990'
Hospital 6mi.
Dispensary 6mi.



Attractions and relaxation



outside



Guest facilities

Interior

- **Receive up to :**
from 1 to 20 person(s) (20 adults)
- **Liveable floor area :**
3,000 Sq.ft.
- **Interior layout :**
12 Room(s), 6 bedroom(s), 1 bathroom, 1 toilets, sitting room 160 Sq.ft., american style kitchen, dining room, tv den
- **Sleeps - bed(s) :**
1 full bed(s), 2 sleeper sofa(s) 2 pers, 2 twin bed(s)
- **Guest facilities :**
T.V., DVD player, board games, book collection, cable/satelite, radio alarmclock, heated towel rail, power shower, electric heating, Drapes, Double glazed
- **Appliances :**
Crockery/flatware, kitchen utensils, cafetiere, electric coffee maker, electric espresso coffee maker, electric kettle, toaster, electric hobs, oven, micro-wave oven, extractor hood, refridgerator, deep freeze, dish washer, washing machine, clothes dryer, vacuum cleaner, iron, ironing board

Exterior

- **Ground surface :**
2,150 Sq.ft.
- **Outside accommodation :**
Terrace 530 Sq.ft.
- **Outside setting :**
Private courtyard 530 Sq.ft.



Services

- **washing :**
Sheets supplement (1 X / per week +\$12*), Towels supplement (1 X / per week +\$2*), Comforter(s), Pillows
- **Single family home :**
Cleaning on departure supplement (+\$185*), Parking
- **Personnel :**
Beauty treatments supplement, Massage supplement
- **Restauration :**
Breakfast supplement (+\$6*), BBQ meal supplement (1 X / per week +\$20*), Picnic basket supplement (1 X / per week +\$14*)

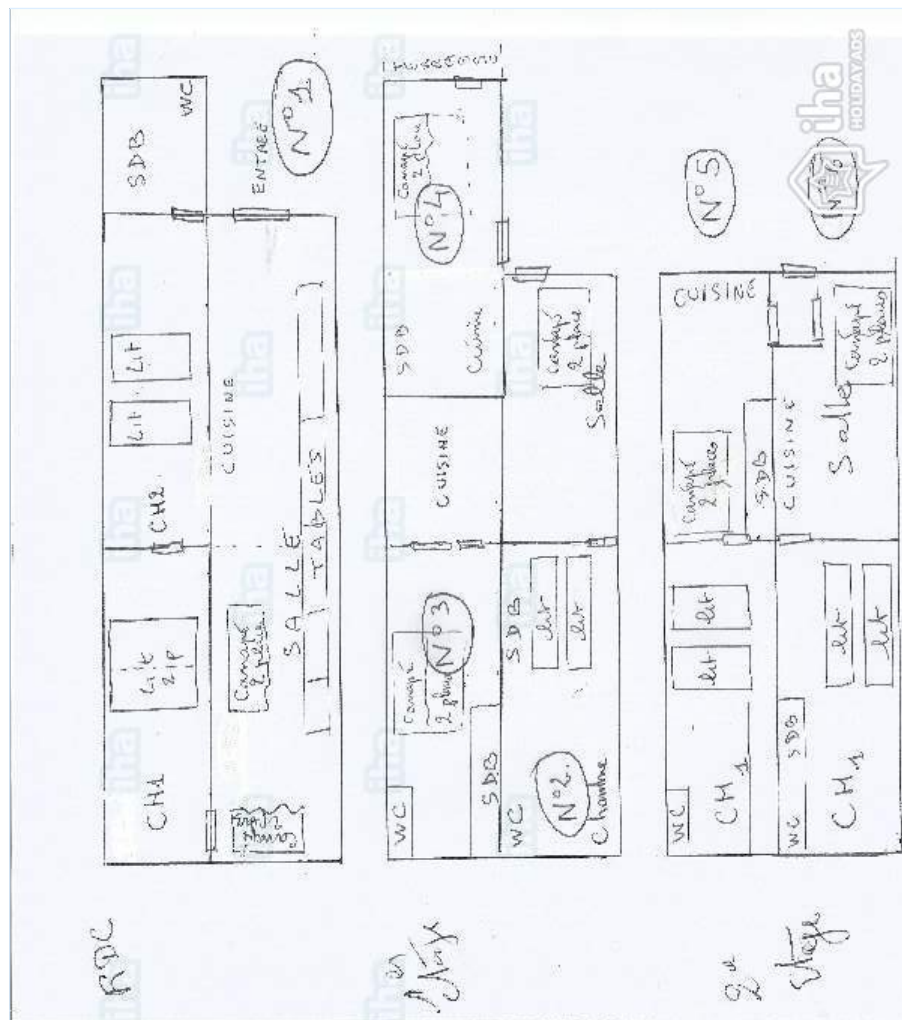
For your guidance

- **For your guidance**
Kids welcome
Cell phone network coverage, personal transport advisable
Water : hot/cold
Local voltage supply : 220-240V / 50Hz
Electricity supply : mains



large bedroom

Floor plan



www.ih.com

Photo album - 1



outside



Attractions and relaxation



Guest facilities



large bedroom



Photo album - 2



twin bed(s)



bathroom



sitting room



Interior facilities



bathroom



[Favourite photo gallery - 1](#)



Mar 2010



Mar 2010



Mar 2013



Mar 2012



Mar 2014




Mar 2009

Location



Location & Access

" A16 exit Street, then direction Fort-Mahon-Plage 10km. By train: Station Street, then taxi or bus to Fort-Mahon-Plage. By plane: airfield Berck or Touquet and then taxi to Fort-Mahon-Plage. "

 GPS coordinates in degrees, minutes, seconds: Latitude 50°20'24"N - Longitude 1° 33'57"E (Dwelling)

Address

→ 352 avenue de la Plage
80790 Fort Mahon Plage

• Freeway (exit) A16

→ Rue, Somme, Picardy, France
→ Distance : 9mi.
→ Time : 20'

• Railroad station Rue

→ Rue, Somme, Picardy, France
→ Distance : 6mi.
→ Time : 15'

• Airport Le Touquet Côte d'Opale

→ Le Touquet Paris Plage, Pas de Calais,

Nord Pas de Calais, France

→ Distance : 18.5mi.

→ Time : 30'

• Berck : (9mi.)

• Le Touquet Paris Plage : (18.5mi.)

• Le Crotoy : (11,8mi.)

Contact

Spoken languages



Vacation rental
Fort Mahon Plage - France
Town House

Availability calendar - from : february 2018

Feb	Th	F	Sa	Su	M	Tu	W	Th	F	Sa	Su	M	Tu	W	Th	F	Sa	Su	M	Tu	W	Th	F	Sa	Su	M	Tu	W
2018	1	2	3	4	5	6	7	8	9	10	11	12	13	14	15	16	17	18	19	20	21	22	23	24	25	26	27	28
																				-	-	-	-	-	-	-	-	-

Mar	Th	F	Sa	Su	M	Tu	W	Th	F	Sa	Su	M	Tu	W	Th	F	Sa	Su	M	Tu	W	Th	F	Sa	Su	M	Tu	W	Th	F	Sa
2018	1	2	3	4	5	6	7	8	9	10	11	12	13	14	15	16	17	18	19	20	21	22	23	24	25	26	27	28	29	30	31
	-	-	-	-	-	-	-	-	-	-	-	-	-	-	-	-	-	-	-	-	-	-	-	-	-	-	-	-	-	-	-

Apr	Su	M	Tu	W	Th	F	Sa	Su	M	Tu	W	Th	F	Sa	Su	M	Tu	W	Th	F	Sa	Su	M	Tu	W	Th	F	Sa	Su	M
2018	1	2	3	4	5	6	7	8	9	10	11	12	13	14	15	16	17	18	19	20	21	22	23	24	25	26	27	28	29	30
	-	-	-	-	-	-	-	-	-	-	-	-	-	-	-	-	-	-	-	-	-	-	-	-	-	-	-	-	-	-

May	Tu	W	Th	F	Sa	Su	M	Tu	W	Th	F	Sa	Su	M	Tu	W	Th	F	Sa	Su	M	Tu	W	Th	F	Sa	Su	M	Tu	W	Th
2018	1	2	3	4	5	6	7	8	9	10	11	12	13	14	15	16	17	18	19	20	21	22	23	24	25	26	27	28	29	30	31
	-	-	-	-	-	-	-	-	-	-	-	-	-	-	-	-	-	-	-	-	-	-	-	-	-	-	-	-	-	-	-

June	F	Sa	Su	M	Tu	W	Th	F	Sa	Su	M	Tu	W	Th	F	Sa	Su	M	Tu	W	Th	F	Sa							
2018	1	2	3	4	5	6	7	8	9	10	11	12	13	14	15	16	17	18	19	20	21	22	23	24	25	26	27	28	29	30
	-	-	-	-	-	-	-	-	-	-	-	-	-	-	-	-	-	-	-	-	-	-	-	-	-	-	-	-	-	

Jul	Su	M	Tu	W	Th	F	Sa	Su	M	Tu	W	Th	F	Sa	Su	M	Tu	W	Th	F	Sa	Su	M	Tu	W	Th	F	Sa	Su	M	Tu
2018	1	2	3	4	5	6	7	8	9	10	11	12	13	14	15	16	17	18	19	20	21	22	23	24	25	26	27	28	29	30	31
	-	-	-	-	-	-	-	-	-	-	-	-	-	-	-	-	-	-	-	-	-	-	-	-	-	-	-	-	-	-	

Aug	W	Th	F	Sa	Su	M	Tu	W	Th	F	Sa	Su	M	Tu	W	Th	F	Sa	Su	M	Tu	W	Th	F	Sa	Su	M	Tu	W	Th	F
2018	1	2	3	4	5	6	7	8	9	10	11	12	13	14	15	16	17	18	19	20	21	22	23	24	25	26	27	28	29	30	31
	-	-	-	-	-	-	-	-	-	-	-	-	-	-	-	-	-	-	-	-	-	-	-	-	-	-	-	-	-	-	-

Sep	Sa	Su	M	Tu	W	Th	F	Sa	Su	M	Tu	W	Th	F	Sa	Su	M	Tu	W	Th	F	Sa	Su							
2018	1	2	3	4	5	6	7	8	9	10	11	12	13	14	15	16	17	18	19	20	21	22	23	24	25	26	27	28	29	30
	-	-	-	-	-	-	-	-	-	-	-	-	-	-	-	-	-	-	-	-	-	-	-	-	-	-	-	-	-	

Oct	M	Tu	W	Th	F	Sa	Su	M	Tu	W	Th	F	Sa	Su	M	Tu	W	Th	F	Sa	Su	M	Tu	W							
2018	1	2	3	4	5	6	7	8	9	10	11	12	13	14	15	16	17	18	19	20	21	22	23	24	25	26	27	28	29	30	31
	-	-	-	-	-	-	-	-	-	-	-	-	-	-	-	-	-	-	-	-	-	-	-	-	-	-	-	-	-		

Nov	Th	F	Sa	Su	M	Tu	W	Th	F	Sa	Su	M	Tu	W	Th	F	Sa	Su	M	Tu	W	Th	F							
2018	1	2	3	4	5	6	7	8	9	10	11	12	13	14	15	16	17	18	19	20	21	22	23	24	25	26	27	28	29	30
	-	-	-	-	-	-	-	-	-	-	-	-	-	-	-	-	-	-	-	-	-	-	-	-	-	-	-	-	-	



Vacation rental Picardy - Fort Mahon Plage Town House

10
[Book now](#)





Availability calendar - from : november 2018

Dec	Sa	Su	M	Tu	W	Th	F	Sa	Su	M	Tu	W	Th	F	Sa	Su	M	Tu	W	Th	F	Sa	Su	M							
2018	1	2	3	4	5	6	7	8	9	10	11	12	13	14	15	16	17	18	19	20	21	22	23	24	25	26	27	28	29	30	31
-	-	-	-	-	-	-	-	-	-	-	-	-	-	-	-	-	-	-	-	-	-	-	-	-	-	-	-	-	-	-	

Jan	Tu	W	Th	F	Sa	Su	M	Tu	W	Th	F	Sa	Su	M	Tu	W	Th	F	Sa	Su	M	Tu	W	Th							
2019	1	2	3	4	5	6	7	8	9	10	11	12	13	14	15	16	17	18	19	20	21	22	23	24	25	26	27	28	29	30	31
-	-	-	-	-	-	-	-	-	-	-	-	-	-	-	-	-	-	-	-	-	-	-	-	-	-	-	-	-	-	-	

[Month : Next >>](#)

Rental rates - Town House - from 1 to 20 Person(s)

Rates	Night	Weekend	week	2 weeks	Month
 Low season	\$370* (Sunday)	\$1111* (Friday)	\$2222* (Saturday)	-	\$8025*
 Mid season	-	-	\$2222* (Saturday)	-	\$8025*
 High season	\$494* (Sunday)	\$1482* (Friday)	\$3580* (Saturday)	-	\$8025*
 Festive specials	-	-	\$3580* (Saturday)	-	-

(Check-in day)

[Book now](#)

Booking conditions

• Reservation

- Payment made upon reservation : 35% of rental sum
- Payment balance : on handing over the keys
- Deposit required : \$617*

• rentals

- Service charges included
- Day tax in addition

Accepted methods of payment

- International Money Order
- Bank transfer (wire)
- Check
- Draft
- Cash
- Holiday coupon

[▶ Book now](#)

[▶ Contact the owner](#)

Contact directly the property owners

www.iha.com
Advert No.
17898
[>> Book now <<](#)

Contact

Spoken languages



* Converted at the rate indicated : €100 = \$123.46 = £88.94

Advert No. 17898

www.iha.com



[>> VACATION HOMES](#)

[DIRECT BY OWNERS](#)