

# Vacation rental Grainau "La Casa Bianca"

Modern furnished apartment, terrace, garden, absolutely quiet.



**Apartment-Flat** first floor, separate entrance, in(on) a(an) Charming House single storey

Setting : suitable for a relaxing break, mountainy

Capacity : from 1 to 5 person(s)

Bedroom(s) : 2

Room(s) : 3



Deutscher Tourismusverband (3 stars)

Grainau - Upper Bavaria - Bavaria

Germany

Reservation : +49 (0) 8821 988655 (Germany)

Advert No. 20947

www.ihacom



## Vacation rental



Apartment-Flat first floor, separate entrance, in(on) a(an) Charming House single storey

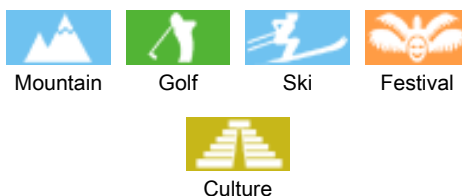
- **Ideal for all age groups, sporty types**
- **View :** panoramic, unobscured, mountain, country side, garden/park, fantastic sunset
- **Setting :** suitable for a relaxing break, mountainy
- **Exposure :** South-east

" Our spacious and absolutely quiet apartment of 68 m<sup>2</sup> can comfortably accommodate 2-5 people. Spacious bedroom with double bed for two persons, on the large sofa bed in the living room there is place for another two people. An extra bed for a child extends the use of the apartment with 3 stars award-winning. The fully furnished kitchenette with opposite wardrobe, as well as the shower will not disappoint you. In the comfortable teak wood set on the wooden floor of approx. 25 sqm terrace you can enjoy nice weather, you may use the large garden. Underfloor heating, electric shutters, a separate entrance and the complete, modern facilities will not disappoint you. 2 x TV, PC with Internet, Wi-Fi, compl. bed linen, towels. Park in the large parking lot next to our house. In a few minutes you can reach the city center, the Zug Spitz pool, the Zugspitzbahn or in winter the cross-country ski run. "

## Assets

- **Parking :**  
Parking uncovered : 3 off road.
- **Advantages :**  
Ping-pong table, ping-pong bats
- **baby equipment :**  
High chair

## Surroundings & location



" Grainau, state-recognised climatic health resort and wintersports paradise, 750 m - 2962 m, 3700 inhabitants. Grainau is one of the most beautiful locations of the Bavarian Alps, directly under the Zugspitze, the highest mountain of Germany, and lies about 6 km South-West of Garmisch-Partenkirchen. The five Grainauer hamlets are all connected by bus or Zugspitze railway. The resort is your ideal starting point for winter and summer holidays. Climatically conveniently located, Grainau is virtually free of fog, and characterized by a variety of recreational and sports facilities. However, the rural character due to the strict building regulations was preserved until today. The mountain world of the Zug Spitz village has about 100 km of gently rising and alpine hiking trails, 40 km are cleaned of snow in the winter and offer wonderful relaxation in stunning scenery. Other activities: Nordic walking, rafting, snowboarding, skiing, swimming, climbing. Do you play golf? You find two world-class golf courses in the vicinity of Grainau: Ehrwald and Garmisch-Partenkirchen/Oberau. In addition: Iffeldorf, Wallgau, Seefeld (Tyrol). Ski: Grainau is located at the foot of the Zugspitze, Germany's highest mountain and guaranteed snow winter sports paradise, usually from early November to late April. "

### Leisure

- **Leisure activities less than 12 miles :**  
Alpine skiing, cross-country skiing, off-piste skiing, ski-trekking, Télémart skiing, snowboarding, luge (run), ice-skating, bathing, pedalo, snorkelling, canoeing, golf, tennis, squash, pathway/broadwalk, coastal/forest paths, hiking, rappel, rock climbing, mountain bike (path), kite flying, hang-gliding, paragliding, airships, glider (club), horse-drawn carriage, mini-golf, ten-pin bowling, volleyball
- **Supervised :**  
Ski school, kids ski area, tennis school
- **Attractions and relaxation :**  
Bar/pub, discotheque, restaurant, movie theater, park and garden, exhibition center, historical site, museum, theater, festivals, antiques & bric-a-brac, local craftstore, casino, natural spring baths, sauna, health spa, beauticians, fitness center

### Surroundings

- **Locality :**  
Ski slopes 1.85mi.

Ski lifts 1.85mi.  
Heated swimming pool 0.62mi.  
Shingle beach 3mi.  
Public swimming pool 0.62mi.  
Public tennis court 1.5mi.  
9 hole golf course 4.5mi.  
18 hole golf course 6mi.  
Flying clubs >31mi.  
Windsurfing spots 18.5mi.  
River 1.25mi.  
Lake 3mi.  
Forest <165'  
Mountain range 1.25mi.  
Via ferrata-alpinism

### • Amenities :

Village center 0.3mi.  
Bus stop / bus station 0.3mi.  
Ski bus pick up point 0.3mi.  
Bike/mountain bike hire 0.3mi.  
Car rental 1.85mi.  
Boat rental 2.5mi.  
Ski hire store 0.5mi.  
Breadstore 0.3mi.  
Local stores 0.3mi.  
Supermarket 1.25mi.  
High class retailers 1.85mi.  
Hairdressing salon 0.3mi.  
Mail office 0.3mi.  
Bank 0.3mi.  
ATM 0.3mi.  
Drugstore 0.5mi.  
Doctor 0.5mi.  
Hospital 2.5mi.  
Dispensary 2.5mi.



kitchenette



bedroom



bathroom

### Interior

- **Receive up to :**  
from 1 to 5 person(s) (4 adults, 1 kids)
- **Liveable floor area :**  
750 Sq.ft.
- **Interior layout :**  
3 Room(s), 2 bedroom(s), 1 bathroom, 1 toilets, living room 270 Sq.ft., kitchenette, dining area, veranda
- **Sleeps - bed(s) :**  
1 full bed(s), 1 sleeper sofa(s) 2 pers, 1 baby cradle, 1 possible extra bed(s)
- **Guest facilities :**  
T.V., hi-fi system, t.v points, phone, cable/satelite, high speed internet access, wifi, wardrobe, cupboard, Hanging wardrobe, safe deposit box, radio alarmclock, hair dryer, central heating, Drapes, Double glazed, electric shutters
- **Appliances :**  
Crockery/flatware, kitchen utensils, electric coffee maker, electric kettle, toaster, meat broiler, electric stove, electric hobs, oven, micro-wave oven, extractor hood, refridgerator, deep freeze, vacuum cleaner

### Exterior

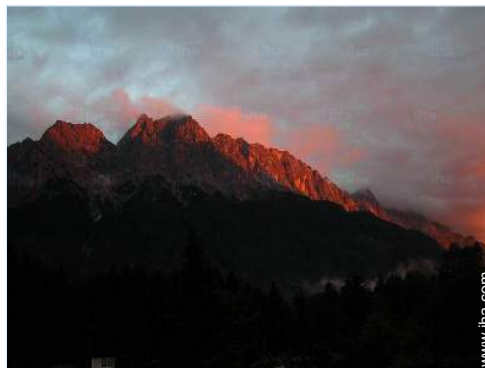
- **Ground surface :**  
0.5 acre
- **Outside accommodation :**  
Terrace 270 Sq.ft., sundeck 270 Sq.ft.
- **Outside setting :**  
Enclosed grounds 0.5 acre, yard > 0.25 acre, lawn 5,400 Sq.ft.
- **Outside amenities :**  
BBQ, yard table(s), 5 yard seat(s), parasol, 2 sun recliner(s)

### Services

- **washing :**  
Sheets (1 X / per week), Towels (1 X / per week), Linen (1 X / per week), Comforter(s), Pillows
- **Single family home :**  
Cleaning on departure, Yard/swimming pool maintenance, Snow clearance, Parking

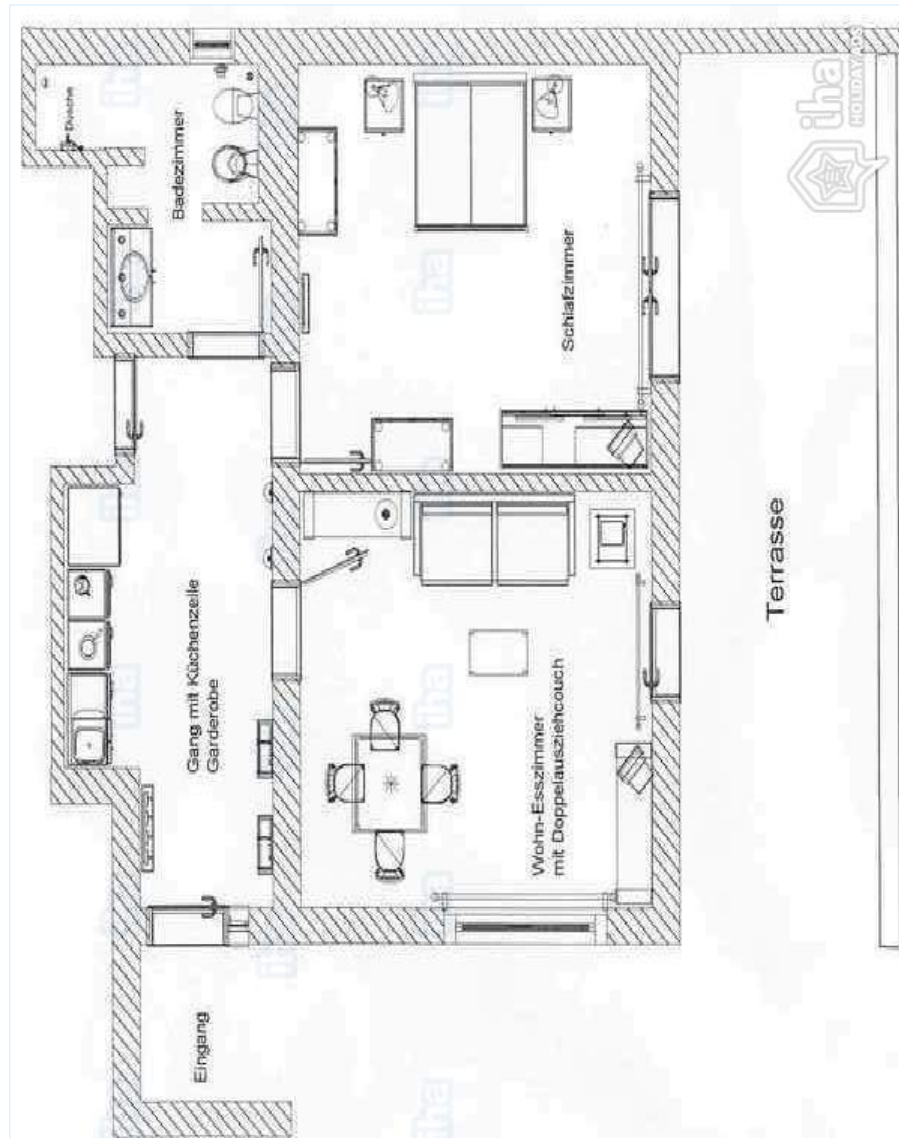
### For your guidance

- **For your guidance**  
Kids welcome  
Pets accepted under certain conditions (ask the owner)  
Non smoking rental, cell phone network coverage  
Water : hot/cold  
Local voltage supply : 220-240V / 50Hz  
Electricity supply : mains
- **Handicapped people welcome**  
Fitted out for the disabled : mobility, visually impaired, hard of hearing, mentally



View

Floor plan



[www.ihaholiday.com](http://www.ihaholiday.com)

Photo album - 1



living room



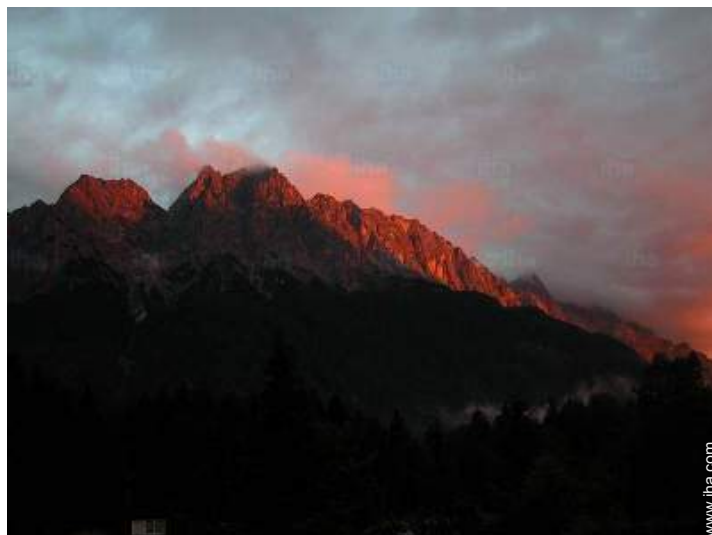
bedroom



kitchenette

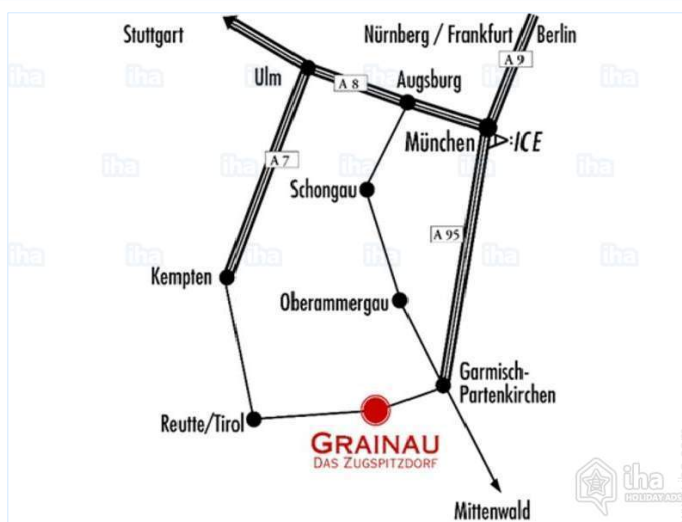


bathroom




View

## Route map



## Location & Access

" Easily accesible by car from the North via the A95 from Munich coming in about 1 hour. From Ulm via the A7 motorway in about 2 hours. ICE-station in Garmisch-Partenkirchen. "

 GPS coordinates in degrees, minutes, seconds: Latitude 47° 28'30.1"N - Longitude 11°1'55.19"E ([Dwelling](#))

### Address

→ An der Aschau 4  
82491 Grainau

#### • Freeway (exit) A 95 Autobahnde

→ Eschenlohe, Upper Bavaria, Bavaria, Germany  
→ Distance : 59mi.  
→ Time : 20'

#### • Railroad station Garmisch Partenkirchen

→ Garmisch Partenkirchen, Upper Bavaria, Bavaria, Germany  
→ Distance : 4.5mi.  
→ Time : 10'

#### • Airport Munich

→ Munich, Upper Bavaria, Bavaria, Germany  
→ Distance : 81mi.  
→ Time : 2h

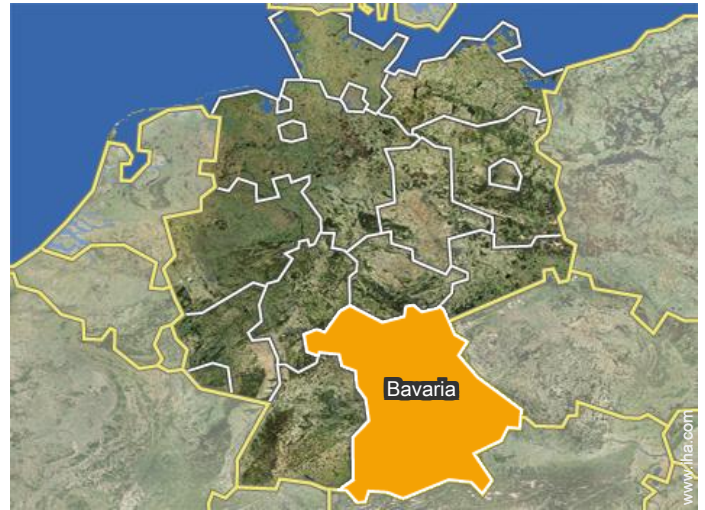
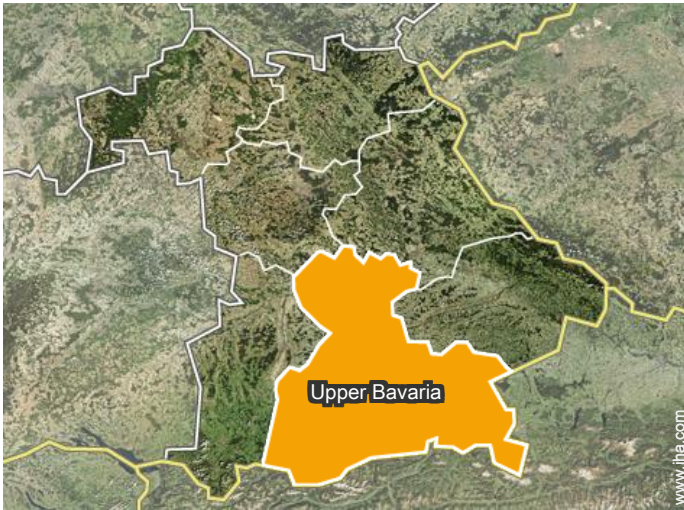
#### • Garmisch Partenkirchen : (2.5mi.)

## Contact

Spoken languages



Location



# Vacation rental Upper Bavaria - Bavaria "La Casa Bianca"

8  
[Book now](#)

Availability calendar - from : july 2017

Jul	Sa	Su	M	Tu	W	Th	F	Sa	Su	M	Tu	W	Th	F	Sa	Su	M	Tu	W	Th	F	Sa	Su	M							
2017	1	2	3	4	5	6	7	8	9	10	11	12	13	14	15	16	17	18	19	20	21	22	23	24	25	26	27	28	29	30	31

Aug	Tu	W	Th	F	Sa	Su	M	Tu	W	Th	F	Sa	Su	M	Tu	W	Th	F	Sa	Su	M	Tu	W	Th							
2017	1	2	3	4	5	6	7	8	9	10	11	12	13	14	15	16	17	18	19	20	21	22	23	24	25	26	27	28	29	30	31
	-	-	-	-	-	-	-	-	-	-	-	-	-	-	-	-	-	-	-	-	-	-	-	-	-	-	-	-	-	-	

Sep	F	Sa	Su	M	Tu	W	Th	F	Sa	Su	M	Tu	W	Th	F	Sa	Su	M	Tu	W	Th	F	Sa							
2017	1	2	3	4	5	6	7	8	9	10	11	12	13	14	15	16	17	18	19	20	21	22	23	24	25	26	27	28	29	30
	-	-	-	-	-	-	-	-	-	-	-	-	-	-	-	-	-	-	-	-	-	-	-	-	-	-	-	-	-	

Oct	Su	M	Tu	W	Th	F	Sa	Su	M	Tu	W	Th	F	Sa	Su	M	Tu	W	Th	F	Sa	Su	M	Tu							
2017	1	2	3	4	5	6	7	8	9	10	11	12	13	14	15	16	17	18	19	20	21	22	23	24	25	26	27	28	29	30	31
	-	-	-	-	-	-	-	-	-	-	-	-	-	-	-	-	-	-	-	-	-	-	-	-	-	-	-	-	-	-	

Nov	W	Th	F	Sa	Su	M	Tu	W	Th	F	Sa	Su	M	Tu	W	Th	F	Sa	Su	M	Tu	W	Th							
2017	1	2	3	4	5	6	7	8	9	10	11	12	13	14	15	16	17	18	19	20	21	22	23	24	25	26	27	28	29	30
	-	-	-	-	-	-	-	-	-	-	-	-	-	-	-	-	-	-	-	-	-	-	-	-	-	-	-	-	-	

Dec	F	Sa	Su	M	Tu	W	Th	F	Sa	Su	M	Tu	W	Th	F	Sa	Su	M	Tu	W	Th	F	Sa	Su							
2017	1	2	3	4	5	6	7	8	9	10	11	12	13	14	15	16	17	18	19	20	21	22	23	24	25	26	27	28	29	30	31
	-	-	-	-	-	-	-	-	-	-	-	-	-	-	-	-	-	-	-	-	-	-	-	-	-	-	-	-	-	-	

Jan	M	Tu	W	Th	F	Sa	Su	M	Tu	W	Th	F	Sa	Su	M	Tu	W	Th	F	Sa	Su	M	Tu	W							
2018	1	2	3	4	5	6	7	8	9	10	11	12	13	14	15	16	17	18	19	20	21	22	23	24	25	26	27	28	29	30	31
	-	-	-	-	-	-	-	-	-	-	-	-	-	-	-	-	-	-	-	-	-	-	-	-	-	-	-	-	-	-	

Feb	Th	F	Sa	Su	M	Tu	W	Th	F	Sa	Su	M	Tu	W	Th	F	Sa	Su	M	Tu	W							
2018	1	2	3	4	5	6	7	8	9	10	11	12	13	14	15	16	17	18	19	20	21	22	23	24	25	26	27	28
	-	-	-	-	-	-	-	-	-	-	-	-	-	-	-	-	-	-	-	-	-	-	-	-	-	-	-	-

Mar	Th	F	Sa	Su	M	Tu	W	Th	F	Sa	Su	M	Tu	W	Th	F	Sa	Su	M	Tu	W	Th	F	Sa							
2018	1	2	3	4	5	6	7	8	9	10	11	12	13	14	15	16	17	18	19	20	21	22	23	24	25	26	27	28	29	30	31
	-	-	-	-	-	-	-	-	-	-	-	-	-	-	-	-	-	-	-	-	-	-	-	-	-	-	-	-	-		

Apr	Su	M	Tu	W	Th	F	Sa	Su	M	Tu	W	Th	F	Sa	Su	M	Tu	W	Th	F	Sa	Su	M							
2018	1	2	3	4	5	6	7	8	9	10	11	12	13	14	15	16	17	18	19	20	21	22	23	24	25	26	27	28	29	30
	-	-	-	-	-	-	-	-	-	-	-	-	-	-	-	-	-	-	-	-	-	-	-	-	-	-	-	-	-	

 Reserved



Vacation rental  
Grainau - Germany  
"La Casa Bianca"

9  
[Book now](#)

Availability calendar - from : april 2018

May	Tu	W	Th	F	Sa	Su	M	Tu	W	Th	F	Sa	Su	M	Tu	W	Th	F	Sa	Su	M	Tu	W	Th							
2018	1	2	3	4	5	6	7	8	9	10	11	12	13	14	15	16	17	18	19	20	21	22	23	24	25	26	27	28	29	30	31
	-	-	-	-	-	-	-	-	-	-	-	-	-	-	-	-	-	-	-	-	-	-	-	-	-	-	-	-	-	-	

June	F	Sa	Su	M	Tu	W	Th	F	Sa	Su	M	Tu	W	Th	F	Sa	Su	M	Tu	W	Th	F	Sa							
2018	1	2	3	4	5	6	7	8	9	10	11	12	13	14	15	16	17	18	19	20	21	22	23	24	25	26	27	28	29	30
	-	-	-	-	-	-	-	-	-	-	-	-	-	-	-	-	-	-	-	-	-	-	-	-	-	-	-	-	-	

Reserved

[Month : Next >>](#)

Rental rates - Apartment-Flat - from 1 to 5 Person(s)

Rates	Night	Weekend	week	2 weeks	Month
 Low season	\$87* > 3	\$87*	\$609*	-	-
 High season	\$98* > 3	\$98*	\$685*	-	-
 Promotional period	\$109* > 3	\$109*	\$761*	-	-

> Minimum Night

[Book now](#)

Booking conditions

• Reservation

→ Payment made upon reservation :  
20% of rental sum

• rentals

→ Service charges included  
→ Cleaning charge on departure included

Accepted methods of payment

• International Money Order • Bank transfer (wire) • Cash

[▶ Book now](#)

[▶ Contact the owner](#)

Contact directly the property owners

[www.iha.com](http://www.iha.com)  
Advert No.  
20947  
[>> Book now <<](#)

Contact

Spoken languages



\* Converted at the rate indicated : €100 = \$108.73 = £83.95

Advert No. 20947

[www.iha.com](http://www.iha.com)



[>> VACATION HOMES](#)

DIRECT BY OWNERS