

# Vacation rental Grindelwald "ALPENRUHE Holzchalet"

We, Margreth and Hans-Ulrich, are your hosts. We live in our chalet and enjoy the encounter with each holiday guests. Hospitality is our greatest asset.



**Apartment-Flat** first floor, separate entrance, in(on) a(an) Charming Chalet 3 floors

Setting : mountainy, quiet

Capacity : from 2 to 4 person(s)

Bedroom(s) : 1

Room(s) : 2



Swiss Tourism Federation (3 stars)

Grindelwald - Berne Canton

Switzerland

Reservation : +41 (0) 33 853 34 16 (Switzerland)

Advert No. 55386

www.iha.com



## Vacation rental



Apartment-Flat first floor, separate entrance, in(on) a(an) Charming Chalet 3 floors

- **Ideal for all age groups, senior(s)**
- **View :** panoramic, not overlooked, mountain, country side, fantastic sunset, nightlights
- **Setting :** mountainy, quiet
- **Exposure :** South

"Our Chalet is a traditional Grindelwaldhaus. It is located on the sunny side of the Valley and offers a magnificent view of the mountain world - especially on the world-famous Eiger North face. Very quiet location surrounded by meadows, year round access with garage, bus stop 5 minutes walking distance. We rent a spacious and cosy 2-room apartment (70m 2) for 2-4 persons on the ground floor. Entrance with wardrobe and closet, living room with dining area, seating, fireplace, TV and 2 extra beds. Large bedroom with 2 single beds, wardrobe and chest of drawers, bed for children available. Separate kitchen with pass-through, GS, microwave, large refrigerator, cooker with glass-ceramic and oven, coffee machine, toaster. Bathroom with WC and shower. Telephone, digital TV and radio, DVD-player, WIFI, board games, books. Garden with garden furniture, deckchairs, barbecue. Pets on request, non-smoking apartment, free admission to the Sports Centre (indoor swimming pool/ice rink)"

## Assets

- **Parking :**  
Covered parking : 1 closed individual place (s). Parking uncovered
- **Advantages :**  
Piano
- **baby equipment :**  
High chair, infant tub, baby potty

## Surroundings & location



" Whether summer or winter, the Jungfrau region is good for an unforgettable holiday. Embedded in one of the most spectacular mountain scenery in Europe Grindelwald offers everything you need for a relaxing and inspiring holiday. An intact village life with many living traditions, versatile shopping and gastro scenes. Countless excursions and sport activities are summer and winter. Activities less than 20 km away: hiking, climbing, mountain biking, canyoning, rafting, swimming (indoor and outdoor pool in the summer), paragliding, paragliding, minigolf, tennis, carriage rides, toboggan run, indoor rope park, period flyer, Alpine Ski, ski hike, Helsinki, snowboard, tobogganing (longest slope in Europe), Halfpipe/ramp, skateboard, skating, bowling. Enjoy the spectacular views from the Jungfraujoeh - top of Europe at 3454 m above sea level, or cool off on a hot summer day in the Glacier Gorge or observe the biodiversity in the Alpine Bird Park. Variety is guaranteed. "

### Leisure

- **Leisure activities less than 12 miles :**

Alpine skiing, cross-country skiing, off-piste skiing, ski-trekking, snowboarding, luge (run), ice-skating, bathing, canyoning, rafting, golf, tennis, riding school, pathway/broadwalk, coastal/forest paths, hiking, rappel, rock climbing, mountain bike (path), parascending, hang-gliding, paragliding, horse-drawn carriage, mini-golf, skate board (ramps), go-karting, ten-pin bowling, fishing

- **Supervised :**

Ski school, kids ski area

- **Attractions and relaxation :**

Bar/pub, discotheque, restaurant, art gallery, museum, sauna, fitness center

### Surroundings

- **Locality :**

Ski slopes 0.62mi.  
Ski lifts 0.62mi.  
Ice skating rink 0.62mi.  
Heated swimming pool  
Public swimming pool 0.62mi.  
Public tennis court  
9 hole golf course 1.25mi.  
Waterfall  
Cliff  
River 0.62mi.  
Forest 0.62mi.  
Mountain range  
Via ferrata-alpinism

- **Amenities :**

Village center 0.62mi.  
Bus stop / bus station <165'  
Ski bus pick up point <165'  
Bike/mountain bike hire 0.62mi.  
Ski hire store 0.62mi.  
Household linens for hire/laundry services 1.85mi.  
Breadstore 0.62mi.  
Caterer 0.62mi.  
Local stores 0.3mi.  
Supermarket 0.62mi.  
High class retailers 0.62mi.  
Hairdressing salon 0.62mi.  
Mail office 0.62mi.  
Bank 0.62mi.  
ATM 0.62mi.  
Drugstore 0.62mi.  
Doctor 0.3mi.  
Hospital 12.5mi.  
Dispensary 0.5mi.



Outside setting



Winter



the apartment

### Exterior

- **Ground surface :**  
0.5 acre
- **Outside accommodation :**  
Terrace 300 Sq.ft.
- **Outside setting :**  
Enclosed grounds, yard
- **Outside amenities :**  
BBQ, yard table(s), 4 yard seat(s), parasol, 2 sun recliner(s)



Summer

### Interior

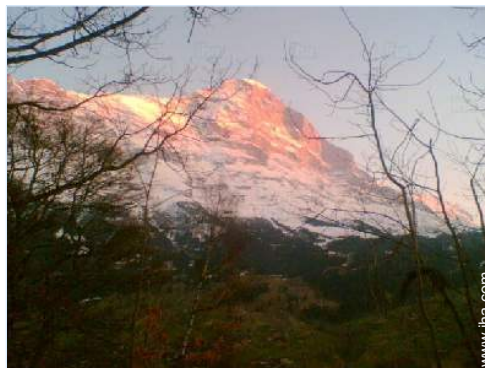
- **Receive up to :**  
from 2 to 4 person(s) (2 adults, 2 kids)
- **Liveable floor area :**  
750 Sq.ft.
- **Interior layout :**  
2 Room(s), 1 bedroom(s), sleeping den, 1 bathroom, 1 toilets, living room 380 Sq.ft., separate kitchen, dining area, cosy nook, tv den, laundry room, loggia
- **Sleeps - bed(s) :**  
2 twin bed(s), 2 twin storage bed 1 pers, 1 baby cradle
- **Guest facilities :**  
Fireplace, T.V., vcr, DVD player, video games, board games, book collection, t.v points, phone, cable/satelite, internet access, wifi, wardrobe, cupboard, Hanging wardrobe, hair dryer, central heating, Drapes, Double glazed, Rolling shutters
- **Appliances :**  
Crockery/flatware, kitchen utensils, cafetiere, electric coffee maker, electric espresso coffee maker, electric kettle, toaster, juicer, food processor, electric raclette set, fondue set, electric stove, electric hobs, oven, microwave oven, extractor hood, refridgerator, deep freeze, ice maker, dish washer, washing machine, vacuum cleaner, iron, ironing board

### Services

- **washing :**  
Sheets (1 X / per week), Towels (2 X / per week), Linen (1 X / per week), Comforter(s) (1 X / per week), Comforter(s) (1 X / per week), Pillows (1 X / per week)
- **Single family home :**  
Cleaning on departure, Snow clearance, Parking

### For your guidance

- **For your guidance**  
Kids welcome  
Pets friendly  
Non smoking rental, cell phone network coverage  
Water : hot/cold  
Local voltage supply : 110-120V / 60Hz  
Electricity supply : mains
- **Handicapped people welcome**  
Fitted out for the disabled : hard of hearing



Mountain

Photo album - 1



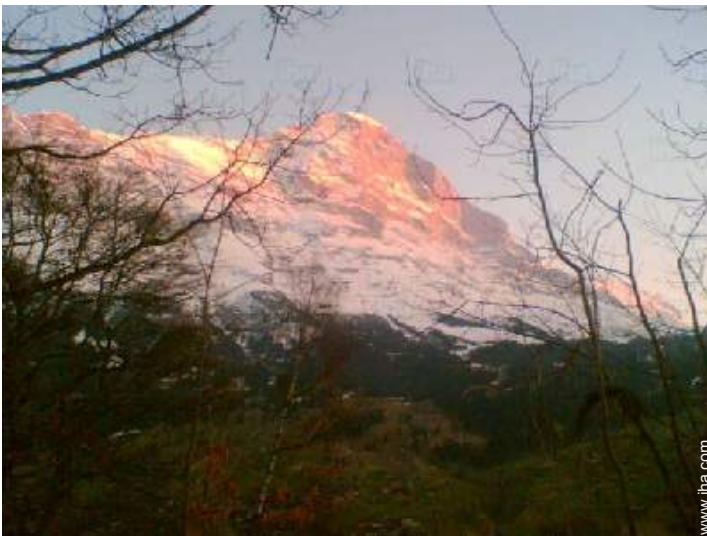
Winter



Outside setting



the apartment



Mountain



Summer

Photo album - 2



General



Culture



the apartment



the apartment



the apartment



the apartment



General



Culture

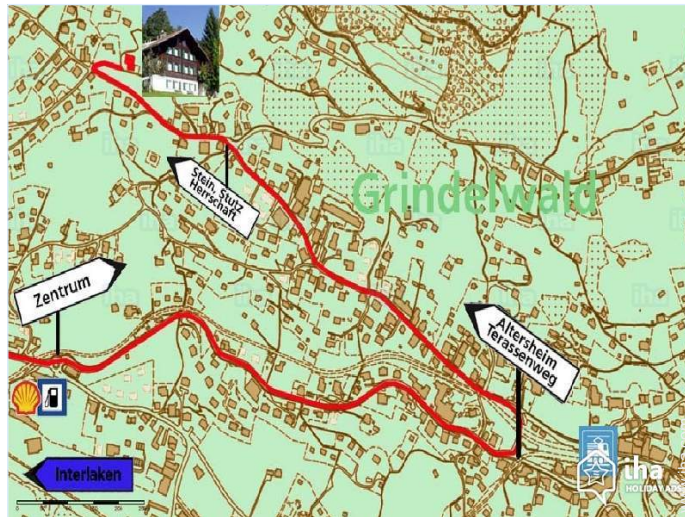


the apartment



the apartment

## Route map



## Location & Access

" By car in about 30 minutes from Interlaken-Wilderswil-Grindelwald. At the roundabout (gas station) 2nd exit, 100 m after 3. left turn petrol (oil TRANS) under railway bridge by, and continue along the road straight ahead, hotel Eigerblick is still 200 m intersection, turn sharp right into mats recourse - access chalet. By train from Interlaken Ost to Grindelwald station. We will pick you up. "



GPS coordinates in degrees, minutes, seconds: Latitude 46° 37'47"N - Longitude 8° 1'17"E (Dwelling)

### Address

→ Mittelmattenweg 3  
CH-3818 Grindelwald

#### • Freeway (exit) A6

→ Wilderswil, Berne Canton, Switzerland  
→ Distance : 12.5mi.  
→ Time : 30'

#### • Railroad station Grindelwald

→ Grindelwald, Berne Canton, Switzerland  
→ Distance : 0.62mi.  
→ Time : 15'

#### • Bus station Grindelwald - Bärplatz

→ Grindelwald, Berne Canton, Switzerland  
→ Distance : 0.62mi.  
→ Time : 5'

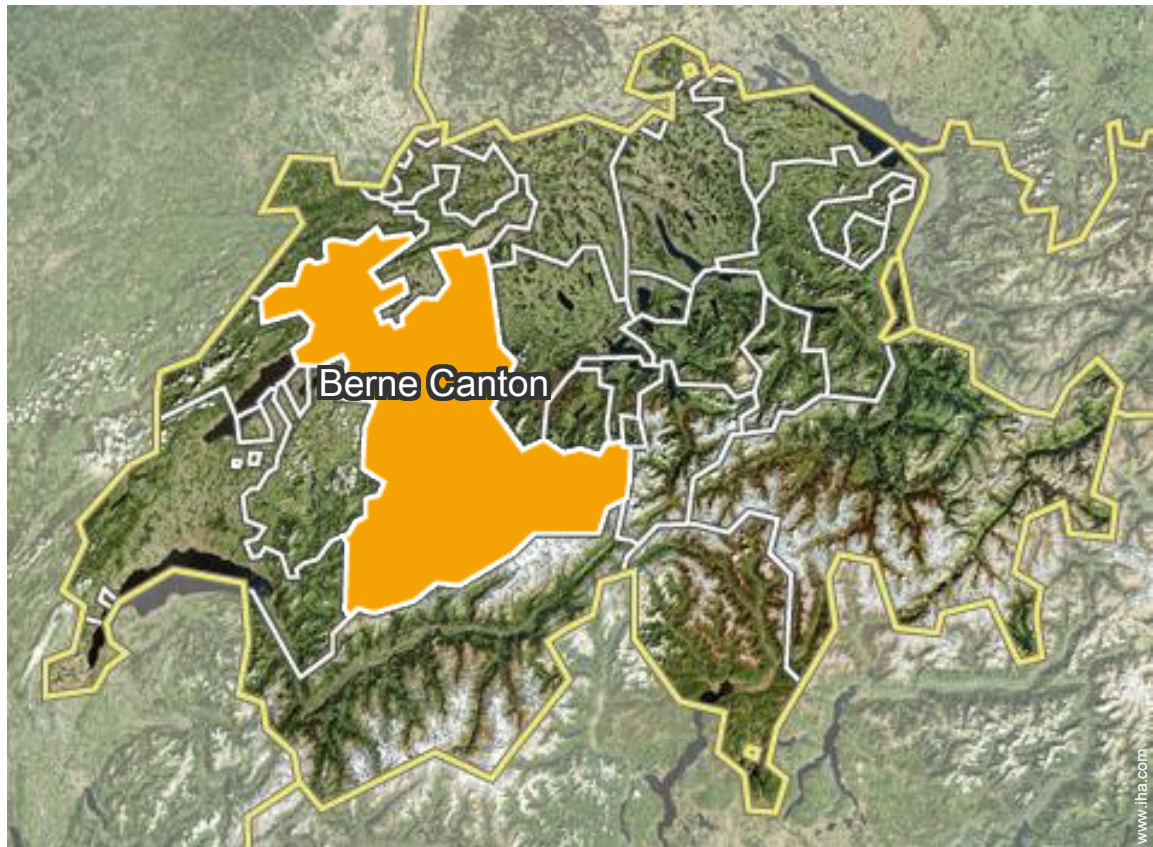
- Interlaken : (12.5mi.)
- Thun : (30mi.)
- Berne : (46,5mi.)

## Contact

Spoken languages



Location



Vacation rental  
 Berne Canton - Switzerland  
**"ALPENRUHE Holzchalet"**

8  
[Book now](#)

Availability calendar - from : january 2019

Jan	Tu	W	Th	F	Sa	Su	M	Tu	W	Th	F	Sa	Su	M	Tu	W	Th	F	Sa	Su	M	Tu	W	Th							
2019	1	2	3	4	5	6	7	8	9	10	11	12	13	14	15	16	17	18	19	20	21	22	23	24	25	26	27	28	29	30	31

Feb	F	Sa	Su	M	Tu	W	Th	F	Sa	Su	M	Tu	W	Th	F	Sa	Su	M	Tu	W	Th									
2019	1	2	3	4	5	6	7	8	9	10	11	12	13	14	15	16	17	18	19	20	21	22	23	24	25	26	27	28		

Mar	F	Sa	Su	M	Tu	W	Th	F	Sa	Su	M	Tu	W	Th	F	Sa	Su	M	Tu	W	Th	F	Sa	Su							
2019	1	2	3	4	5	6	7	8	9	10	11	12	13	14	15	16	17	18	19	20	21	22	23	24	25	26	27	28	29	30	31

Apr	M	Tu	W	Th	F	Sa	Su	M	Tu	W	Th	F	Sa	Su	M	Tu	W	Th	F	Sa	Su	M	Tu								
2019	1	2	3	4	5	6	7	8	9	10	11	12	13	14	15	16	17	18	19	20	21	22	23	24	25	26	27	28	29	30	

May	W	Th	F	Sa	Su	M	Tu	W	Th	F	Sa	Su	M	Tu	W	Th	F	Sa	Su	M	Tu	W	Th	F							
2019	1	2	3	4	5	6	7	8	9	10	11	12	13	14	15	16	17	18	19	20	21	22	23	24	25	26	27	28	29	30	31

June	Sa	Su	M	Tu	W	Th	F	Sa	Su	M	Tu	W	Th	F	Sa	Su	M	Tu	W	Th	F	Sa	Su								
2019	1	2	3	4	5	6	7	8	9	10	11	12	13	14	15	16	17	18	19	20	21	22	23	24	25	26	27	28	29	30	

Jul	M	Tu	W	Th	F	Sa	Su	M	Tu	W	Th	F	Sa	Su	M	Tu	W	Th	F	Sa	Su	M	Tu	W							
2019	1	2	3	4	5	6	7	8	9	10	11	12	13	14	15	16	17	18	19	20	21	22	23	24	25	26	27	28	29	30	31

Aug	Th	F	Sa	Su	M	Tu	W	Th	F	Sa	Su	M	Tu	W	Th	F	Sa	Su	M	Tu	W	Th	F	Sa							
2019	1	2	3	4	5	6	7	8	9	10	11	12	13	14	15	16	17	18	19	20	21	22	23	24	25	26	27	28	29	30	31

Sep	Su	M	Tu	W	Th	F	Sa	Su	M	Tu	W	Th	F	Sa	Su	M	Tu	W	Th	F	Sa	Su	M								
2019	1	2	3	4	5	6	7	8	9	10	11	12	13	14	15	16	17	18	19	20	21	22	23	24	25	26	27	28	29	30	

Oct	Tu	W	Th	F	Sa	Su	M	Tu	W	Th	F	Sa	Su	M	Tu	W	Th	F	Sa	Su	M	Tu	W	Th							
2019	1	2	3	4	5	6	7	8	9	10	11	12	13	14	15	16	17	18	19	20	21	22	23	24	25	26	27	28	29	30	31

 Reserved





Vacation rental  
Grindelwald - Switzerland  
"ALPENRUHE Holzchalet"

9

[Book now](#)

Availability calendar - from : october 2019




Nov	F	Sa	Su	M	Tu	W	Th	F	Sa	Su	M	Tu	W	Th	F	Sa	Su	M	Tu	W	Th	F	Sa	
2019	1	2	3	4	5	6	7	8	9	10	11	12	13	14	15	16	17	18	19	20	21	22	23	24
	-	-	-	-	-	-	-	-	-	-	-	-	-	-	-	-	-	-	-	-	-	-	-	-

Dec	Su	M	Tu	W	Th	F	Sa	Su	M	Tu	W	Th	F	Sa	Su	M	Tu	W	Th	F	Sa	Su	M	Tu	
2019	1	2	3	4	5	6	7	8	9	10	11	12	13	14	15	16	17	18	19	20	21	22	23	24	25
	-	-	-	-	-	-	-	-	-	-	-	-	-	-	-	-	-	-	-	-	-	-	-	-	31

 Reserved

[Month : Next >>](#)

Rental rates - Apartment-Flat - from 2 to 4 Person(s)

Rates	Night	Weekend	week	2 weeks	Month
 Low season	\$131* (Saturday) > 6	-	\$918* (Saturday)	\$1836* (Saturday)	-
 High season	\$136* (Saturday) > 6	-	\$953* (Saturday)	\$1907* (Saturday)	-
 Festive specials	\$141* (Saturday) > 6	-	\$989* (Saturday)	\$1978* (Saturday)	-

(Check-in day) > Minimum Night

[Book now](#)

Booking conditions

- **Reservation**
  - Payment made upon reservation : 30% of rental sum
  - Payment balance : on handing over the keys
- **rentals**
  - Service charges included
  - Day tax in addition
  - Cleaning charge on departure included

Accepted methods of payment

- International Money Order
- Bank transfer (wire)
- PayPal
- Cash

[▶ Book now](#)

[▶ Contact the owner](#)

Contact directly the property owners

[www.iha.com](http://www.iha.com)  
Advert No.  
55386  
[>> Book now <<](#)

Contact

Spoken languages



\* Converted at the rate indicated : €100 = \$116.85 = £89

Advert No. 55386

[www.iha.com](http://www.iha.com)



[>> VACATION HOMES](#)

DIRECT BY OWNERS