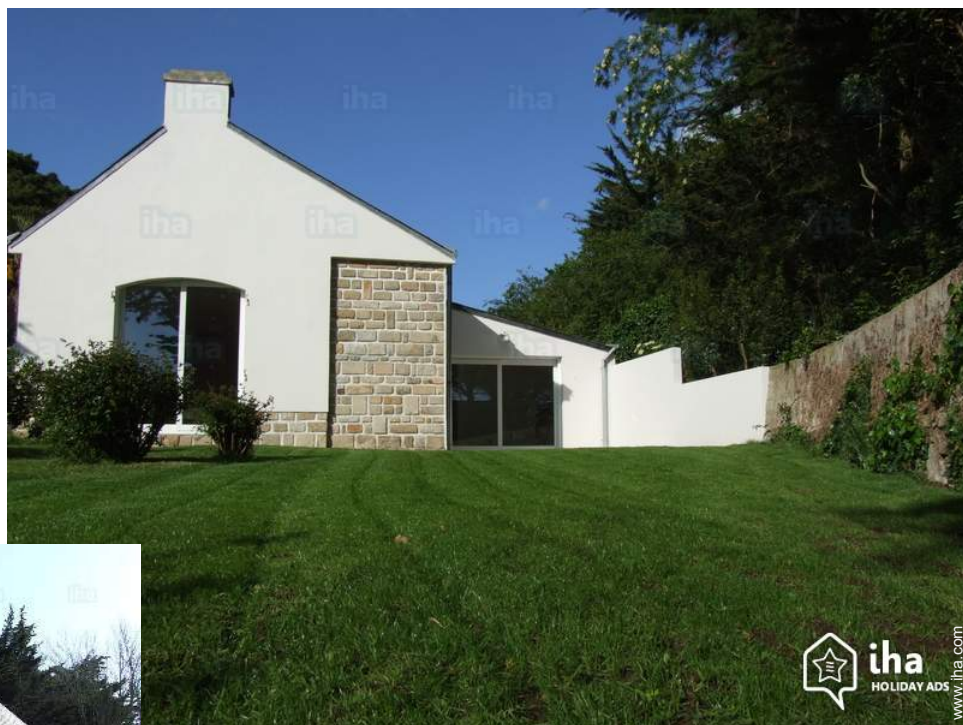


Vacation rental Île aux Moines House

For a couple in need of tranquility in the heart of the Gulf of Morbihan.



House, detached, single storey, separate entrance, in(on) a(an) Private property

Setting : waterfront, tranquil

Capacity : from 1 to 2 person(s)

Bedroom(s) : 1

Room(s) : 2



Clé vacances (2 keys)

Île aux Moines - Morbihan (56) - Brittany

France

Reservation : +33 (0) 297263142 (France)

Advert No. 36717

www.ihacom.com



>> VACATION HOMES

DIRECT BY OWNERS

Vacation rental



House, detached, single storey, separate entrance, in(on) a(an) Private property

- **Ideal for couples**
- **View :** unobscured, not overlooked, sea/ocean, garden/park, harbour, fantastic sunset
- **Setting :** waterfront, tranquil
- **Exposure :** South-west

" Place ideally above the main beach of the ile aux moines. "

Assets

- **Advantages :**
1 bike(s), motor boat, rowing boat, sailing boat

Benefits :
Direct access to the beach



Outside at the guests disposal

Surroundings & location



Ocean



Fishing

" All watersports and walks along the coastal paths on the island. The historic town of Vannes, its castle and its gardens. The Gulf of Morbihan ranked among one of the most beautiful bays of the world. Opening of the ocean and its offshore islands: Belle-ile, Houat and Hoëdic. "

Leisure

- **Leisure activities less than 12 miles :**

Bathing, snorkelling, scuba diving, water skiing, windsurfing, sailing, canoeing, golf, tennis, riding school, pathway/broadwalk, coastal/forest paths, kite flying, parachuting, flying (club), boat trips, horse trekking, fishing, fishing, spear fishing

- **Supervised :**

Sailing school, dive school

- **Attractions and relaxation :**

Bar/pub, restaurant, sea world, nature reserve, historical site, thalassotherapy center, health spa

Surroundings

- **Locality :**

Sea/ocean <165'
Sandy beach <165'
Watersports centre <165'
Stretch of water
Marina 165'
Slipway 165'

- **Amenities :**

Village center 990'
Bike/mountain bike hire <165'
Boat rental <165'
Breadstore 990'
Local stores 0.3mi.
Supermarket 0.62mi.
High class retailers 9mi.
Mail office 0.3mi.
ATM 0.3mi.
Drugstore 990'
Doctor 0.3mi.
Nurse 990'
Hospital 9mi.



dining area



Interior layout



living room

Interior

- **Receive up to :**
from 1 to 2 person(s) (2 adults)
- **Liveable floor area :**
650 Sq.ft.
- **Interior layout :**
2 Room(s), 1 bedroom(s), 1 shower room, 1 toilets, living room 110 Sq.ft., sitting room 215 Sq.ft., separate kitchen, dining area, bar area, walk-in closet
- **Sleeps - bed(s) :**
1 full bed(s)
- **Guest facilities :**
Hi-fi system, wifi, Hanging wardrobe, hair dryer, heated towel rail, electric heating, Glazed in area, Double glazed, Rolling shutters
- **Appliances :**
Crockery/flatware, kitchen utensils, cafetiere, electric kettle, toaster, electric stove, extractor hood, refridgerator, dish washer

Exterior

- **Ground surface :**
8,600 Sq.ft.
- **Outside accommodation :**
Terrace 194 Sq.ft.
- **Outside setting :**
Enclosed grounds, landscaped yard, lawn
- **Outside amenities :**
Summer living area, BBQ, yard table(s), 3 yard seat(s), parasol, yard seated area, 2 sun recliner(s)



bedroom

Services

- **washing :**
Sheets (1 X / per week), Towels (1 X / per week), Linen, Comforter(s), Comforter(s), Pillows
- **Single family home :**
Cleaning

For your guidance

- **For your guidance**
Pets accepted under certain conditions (ask the owner)
Cell phone network coverage
Water : hot/cold
Local voltage supply : 220-240V / 50Hz
Electricity supply : mains



kitchen

Photo album - 1



Outside at the guests disposal



Interior layout



dining area



living room



kitchen

Photo album - 2



bedroom



bedroom



view from the bedroom



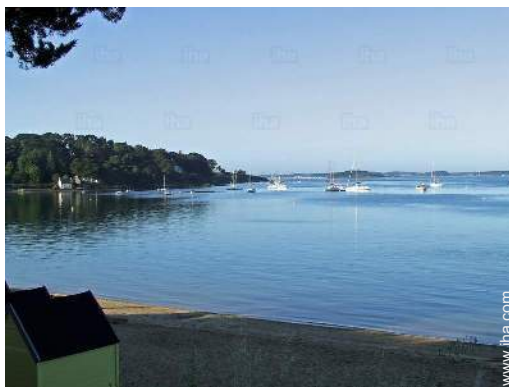
view from the sitting-room



direct access to the beach



direct access to the beach

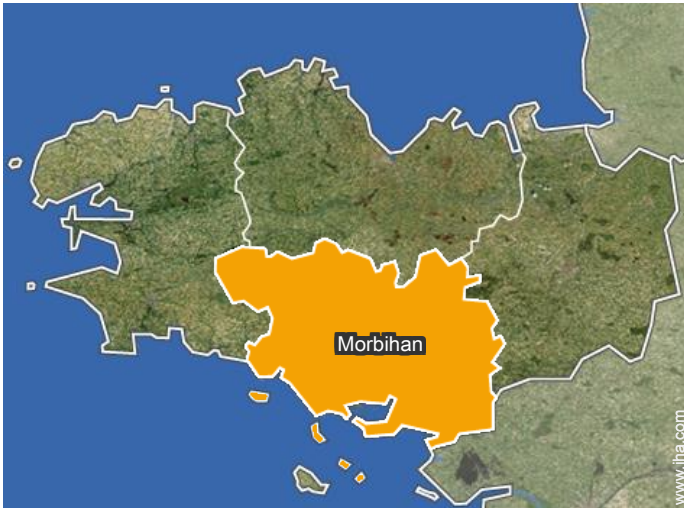


view from the garden/park



view of the sunset

Location



Location & Access

" Fifteen minutes from Vannes, half an hour of Lorient, and an hour and a quarter from Nantes. Very close to the Jetty of the island. "



GPS coordinates in degrees, minutes, seconds: Latitude 47°35'59"N - Longitude 2° 51'9"W (Dwelling)

Address

→ la Grande Plage
56780 Île aux Moines

• Sea port Izenah Marine

→ Île aux Moines, Morbihan, Brittany,
France
→ Distance : 3mi.
→ Time : 15'

• Vannes : (6mi.)

Contact

Spoken
languages



Vacation rental Île aux Moines - France House

7
[Book now](#)

Availability calendar - from : june 2019

June	Sa	Su	M	Tu	W	Th	F	Sa	Su	M	Tu	W	Th	F	Sa	Su	M	Tu	W	Th	F	Sa	Su	M	Tu	W	Th	F	Sa	Su
2019	1	2	3	4	5	6	7	8	9	10	11	12	13	14	15	16	17	18	19	20	21	22	23	24	25	26	27	28	29	30
																				-	-	-	-	-	-	-	-	-	-	-

Jul	M	Tu	W	Th	F	Sa	Su	M	Tu	W	Th	F	Sa	Su	M	Tu	W	Th	F	Sa	Su	M	Tu	W	Th	F	Sa	Su	M	Tu	W
2019	1	2	3	4	5	6	7	8	9	10	11	12	13	14	15	16	17	18	19	20	21	22	23	24	25	26	27	28	29	30	31
	-	-	-	-	-	-	-	-	-	-	-	-	-	-	-	-	-	-	-	-	-	-	-	-	-	-	-	-	-	-	-

Aug	Th	F	Sa	Su	M	Tu	W	Th	F	Sa	Su	M	Tu	W	Th	F	Sa	Su	M	Tu	W	Th	F	Sa	Su	M	Tu	W	Th	F	Sa
2019	1	2	3	4	5	6	7	8	9	10	11	12	13	14	15	16	17	18	19	20	21	22	23	24	25	26	27	28	29	30	31
	-	-	-	-	-	-	-	-	-	-	-	-	-	-	-	-	-	-	-	-	-	-	-	-	-	-	-	-	-	-	-

Sep	Su	M	Tu	W	Th	F	Sa	Su	M	Tu	W	Th	F	Sa	Su	M	Tu	W	Th	F	Sa	Su	M	Tu	W	Th	F	Sa	Su	M
2019	1	2	3	4	5	6	7	8	9	10	11	12	13	14	15	16	17	18	19	20	21	22	23	24	25	26	27	28	29	30
	-	-	-	-	-	-	-	-	-	-	-	-	-	-	-	-	-	-	-	-	-	-	-	-	-	-	-	-	-	-

Oct	Tu	W	Th	F	Sa	Su	M	Tu	W	Th	F	Sa	Su	M	Tu	W	Th	F	Sa	Su	M	Tu	W	Th	F	Sa	Su	M	Tu	W	Th
2019	1	2	3	4	5	6	7	8	9	10	11	12	13	14	15	16	17	18	19	20	21	22	23	24	25	26	27	28	29	30	31
	-	-	-	-	-	-	-	-	-	-	-	-	-	-	-	-	-	-	-	-	-	-	-	-	-	-	-	-	-	-	-


Nov	F	Sa	Su	M	Tu	W	Th	F	Sa	Su	M	Tu	W	Th	F	Sa	Su	M	Tu	W	Th	F	Sa	Su	M	Tu	W	Th	F	Sa
2019	1	2	3	4	5	6	7	8	9	10	11	12	13	14	15	16	17	18	19	20	21	22	23	24	25	26	27	28	29	30
	-	-	-	-	-	-	-	-	-	-	-	-	-	-	-	-	-	-	-	-	-	-	-	-	-	-	-	-	-	-

Dec	Su	M	Tu	W	Th	F	Sa	Su	M	Tu	W	Th	F	Sa	Su	M	Tu	W	Th	F	Sa	Su	M	Tu	W	Th	F	Sa	Su	M	Tu
2019	1	2	3	4	5	6	7	8	9	10	11	12	13	14	15	16	17	18	19	20	21	22	23	24	25	26	27	28	29	30	31
	-	-	-	-	-	-	-	-	-	-	-	-	-	-	-	-	-	-	-	-	-	-	-	-	-	-	-	-	-	-	

Jan	W	Th	F	Sa	Su	M	Tu	W	Th	F	Sa	Su	M	Tu	W	Th	F	Sa	Su	M	Tu	W	Th	F	Sa	Su	M	Tu	W	Th	F
2020	1	2	3	4	5	6	7	8	9	10	11	12	13	14	15	16	17	18	19	20	21	22	23	24	25	26	27	28	29	30	31
	-	-	-	-	-	-	-	-	-	-	-	-	-	-	-	-	-	-	-	-	-	-	-	-	-	-	-	-	-	-	-

Feb	Sa	Su	M	Tu	W	Th	F	Sa	Su	M	Tu	W	Th	F	Sa	Su	M	Tu	W	Th	F	Sa	Su	M	Tu	W	Th	F	Sa
2020	1	2	3	4	5	6	7	8	9	10	11	12	13	14	15	16	17	18	19	20	21	22	23	24	25	26	27	28	29
	-	-	-	-	-	-	-	-	-	-	-	-	-	-	-	-	-	-	-	-	-	-	-	-	-	-	-	-	-

Mar	Su	M	Tu	W	Th	F	Sa	Su	M	Tu	W	Th	F	Sa	Su	M	Tu	W	Th	F	Sa	Su	M	Tu	W	Th	F	Sa	Su	M	Tu
2020	1	2	3	4	5	6	7	8	9	10	11	12	13	14	15	16	17	18	19	20	21	22	23	24	25	26	27	28	29	30	31
	-	-	-	-	-	-	-	-	-	-	-	-	-	-	-	-	-	-	-	-	-	-	-	-	-	-	-	-	-	-	

 Reserved



Vacation rental Morbihan - Brittany House

8
[Book now](#)

Availability calendar - from : march 2020

Apr	W	Th	F	Sa	Su	M	Tu	W	Th	F	Sa	Su	M	Tu	W	Th	F	Sa	Su	M	Tu	W	Th	
2020	1	2	3	4	5	6	7	8	9	10	11	12	13	14	15	16	17	18	19	20	21	22	23	24
	-	-	-	-	-	-	-	-	-	-	-	-	-	-	-	-	-	-	-	-	-	-	-	-

May	F	Sa	Su	M	Tu	W	Th	F	Sa	Su	M	Tu	W	Th	F	Sa	Su	M	Tu	W	Th	F	Sa	Su	
2020	1	2	3	4	5	6	7	8	9	10	11	12	13	14	15	16	17	18	19	20	21	22	23	24	25
	-	-	-	-	-	-	-	-	-	-	-	-	-	-	-	-	-	-	-	-	-	-	-	-	-

Reserved

[Month : Next >>](#)

Rental rates - House - from 1 to 2 Person(s)

Rates	Night	Weekend	week	2 weeks	Month
<input type="checkbox"/> Mid season	-	-	\$818* (Saturday)	-	-
<input type="checkbox"/> High season	-	-	\$935* (Saturday)	\$1753* (Saturday)	-

(Check-in day)

[Book now](#)

Booking conditions

• Reservation

→ Payment made upon reservation :
20% of rental sum
→ Payment balance :
on handing over the keys

• rentals

→ Service charges included
→ Day tax included
→ Cleaning charge on departure included

[▶ Book now](#)

[▶ Contact the owner](#)

Accepted methods of payment

• Check • Cash

Contact directly the property owners

www.iha.com
Advert No.
36717
[>> Book now <<](#)

Contact

Spoken languages



* Converted at the rate indicated : €100 = \$116.85 = £89

Advert No. 36717

www.iha.com



[>> VACATION HOMES](#)

[DIRECT BY OWNERS](#)