

Vacation rental Immenhausen "Ferienwohnung Gisela"



Bungalow, detached, 1 floor, separate entrance, in(on) a(an) Charming Property

Setting : suitable for a relaxing break, country setting

Capacity : from 1 to 8 person(s)

Bedroom(s) : 2

Room(s) : 3



Deutscher Tourismusverband (3 stars)

Immenhausen - Kassel Region - Hesse

Germany

Reservation : +49 (0) 5673914999 (Germany)

Advert No. 68301

www.iha.com



>> VACATION HOMES

DIRECT BY OWNERS

Vacation rental



Bungalow, detached, 1 floor, separate entrance, in(on) a(an) Charming Property

- **Ideal for all age groups**
- **View :** country side, swimming pool, garden/park, forest, village, square
- **Setting :** suitable for a relaxing break, country setting
- **Exposure :** South

Assets

- **Swimming pool :**
Private swimming pool, oval (length 13', width 9.8'), heated, inside, covered, illuminated, step ladder
- **Parking :**
Parking uncovered : 3 off road.
- **Advantages :**
Sauna, fitness machine(s), table football, ping-pong table, 1 bike(s)



view from the living room

Surroundings & location



Countryside Horse riding

Leisure

- **Leisure activities less than 12 miles :**

Cross-country skiing, ice-skating, bathing, pedalo, golf, tennis, squash, riding school, pony club, pathway/broadwalk, coastal/forest paths, hiking, rappel, mountain bike (path), parachuting, Microlights, airships, flying (club), horse-drawn carriage, horse trekking, donkey rides, rollerblade/rollerskate (circuit), ATV/Quad Bike, go-karting, RC aeromodelling field, ten-pin bowling, hunting, safari photography, fishing, fishing

- **Supervised :**

Tennis school, riding school

- **Attractions and relaxation :**

Bar/pub, discotheque, restaurant, movie theater, open air summer movie theater, park and garden, zoo/animal park, exhibition center, art gallery, historical site, museum, theater, summer theater, opera house, local craftstore, casino, natural spring baths, thermal baths, sauna, steam baths, health spa, fitness center, Bio farm

Surroundings

- **Locality :**

Ski slopes 9mi.
Ski lifts 9mi.
Ice skating rink 9mi.
Heated swimming pool 3mi.
Public swimming pool 3mi.
Public tennis court 3mi.
Flying clubs 6mi.
River 1.85mi.
Forest 660'
Marina 6mi.

- **Amenities :**

Village center 660'
Downtown 6mi.
Bus stop / bus station 330'
Breadstore 0.3mi.
Supermarket 0.3mi.
Hairdressing salon 990'
Doctor 990'



bathroom



view from the kitchen



view from the bedroom

Interior

- **Receive up to :**

from 1 to 8 person(s) (8 adults)

- **Liveable floor area :**

1,300 Sq.ft.

- **Interior layout :**

3 Room(s), 2 bedroom(s), sleeping den, 2 bathroom, living room 430 Sq.ft., separate kitchen, dining room, bar area, fitness room, laundry room, pantry

- **Sleeps - bed(s) :**

1 full bed(s), 1 sleeper sofa(s) 2 pers, 7 twin bed(s), 2 sleeper sofa(s) 1 pers

- **Guest facilities :**

Fireplace, T.V., hi-fi system, vcr, DVD player, board games, book collection, t.v points, fax, cable/satellite, internet access, wifi, wardrobe, cupboard, Hanging wardrobe, safe deposit box, radio alarmclock, hair dryer, power shower, central heating, skylights, Drapes, Double glazed, entry phone system, intruder alarm, fire alarm

- **Appliances :**

Crockery/flatware, kitchen utensils, cafetiere, electric coffee maker, electric kettle, toaster, juicer, electric raclette set, meat broiler, electric stove, oven, micro-wave oven, electric fries fryer, extractor hood, refridgerator, deep freeze, dish washer, washing machine, vacuum cleaner, iron, ironing board

Exterior

- **Outside accommodation :**

Sunhouse 160 Sq.ft., yard shed

- **Outside setting :**

Enclosed grounds 0.25 acre., yard 6,500 Sq. ft., fountain

- **Outside amenities :**

Summer living area, BBQ, yard table(s), 6 yard seat(s), arbour, parasol, yard seated area, 4 sun recliner(s), 2 rocking chair(s)



view from the sitting-room

Services

- **washing :**

Sheets (1 X / per week), Towels (1 X / per week), Linen (1 X / per week), Beach towels (1 X / per week), Comforter(s) (1 X / per week), Comforter(s) (1 X / per week), Pillows (1 X / per week)

- **Single family home :**

Cleaning on departure supplement (+\$29*), Snow clearance, Parking

- **Restauration :**

Breakfast supplement (+\$5*), BBQ meal supplement, Full board supplement

For your guidance

- **For your guidance**

No kids under 8 years old

No pet allowed

Non smoking rental, cell phone network

coverage, personal transport advisable

Water : hot/cold

Local voltage supply : 220-240V / 50Hz

Electricity supply : mains



view from the bedroom

Photo album - 1



view from the living room



view from the kitchen



bathroom



view from the bedroom

Photo album - 2



view from the bedroom



view from the sitting-room



bar area

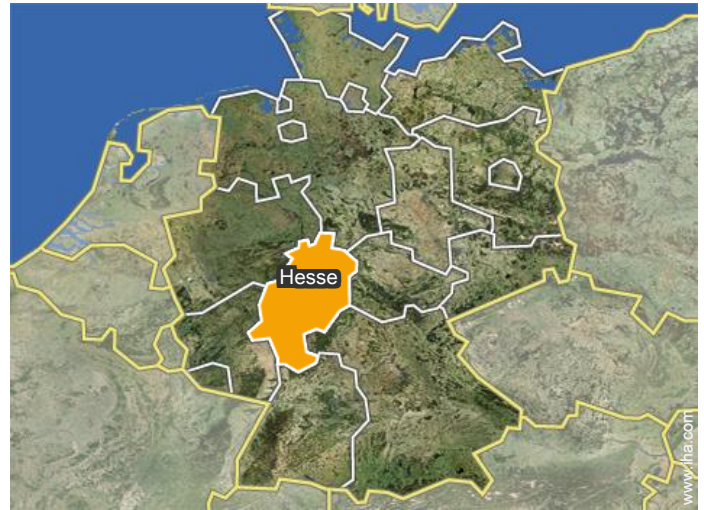
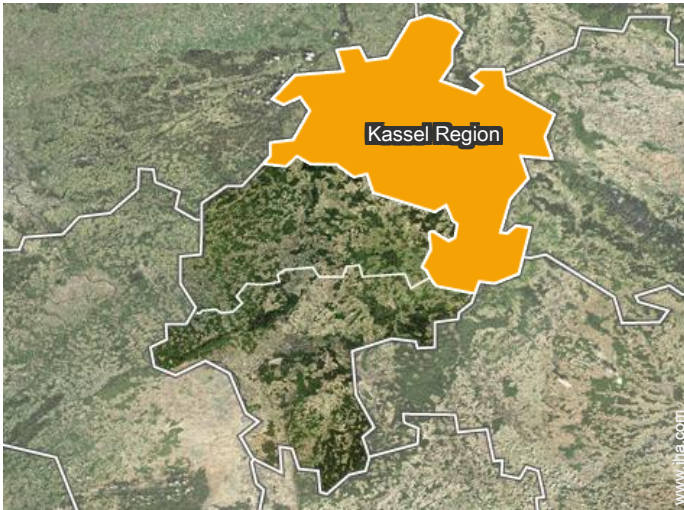


Inside swimming pool



garden/park view

Location



Location & Access



GPS coordinates in degrees, minutes, seconds: Latitude 51°25'34"N - Longitude 9°32'24"E ([Dwelling](#))

Address

→ Staufenbergstrasse 10
34376 Immenhausen

● Railroad station Immenhausen

→ Immenhausen, Kassel Region, Hesse, Germany
→ Distance : 3mi.
→ Time : 20'

● Airport Kassel Calden

→ Kassel, Kassel Region, Hesse, Germany
→ Distance : 6mi.
→ Time : 15'

● Freeway (exit) Ausfahrt Kassel Nord

→ Kassel, Kassel Region, Hesse, Germany
→ Distance : 10,5mi.
→ Time : 20'

- Immenhausen : (3mi.)
- Kassel : (7,5mi.)
- Hofgeismar : (9mi.)

Contact

Spoken languages



Vacation rental Immenhausen - Germany "Ferienwohnung Gisela"

7
[Book now](#)

Availability calendar - from : december 2017

Dec	F	Sa	Su	M	Tu	W	Th	F	Sa	Su	M	Tu	W	Th	F	Sa	Su	M	Tu	W	Th	F	Sa	Su							
2017	1	2	3	4	5	6	7	8	9	10	11	12	13	14	15	16	17	18	19	20	21	22	23	24	25	26	27	28	29	30	31

Jan	M	Tu	W	Th	F	Sa	Su	M	Tu	W	Th	F	Sa	Su	M	Tu	W	Th	F	Sa	Su	M	Tu	W	Th	F	Sa	Su	M	Tu	W
2018	1	2	3	4	5	6	7	8	9	10	11	12	13	14	15	16	17	18	19	20	21	22	23	24	25	26	27	28	29	30	31

Feb	Th	F	Sa	Su	M	Tu	W	Th	F	Sa	Su	M	Tu	W	Th	F	Sa	Su	M	Tu	W	Th	F	Sa	Su	M	Tu	W	
2018	1	2	3	4	5	6	7	8	9	10	11	12	13	14	15	16	17	18	19	20	21	22	23	24	25	26	27	28	

Mar	Th	F	Sa	Su	M	Tu	W	Th	F	Sa	Su	M	Tu	W	Th	F	Sa	Su	M	Tu	W	Th	F	Sa	Su	M	Tu	W	Th	F	Sa
2018	1	2	3	4	5	6	7	8	9	10	11	12	13	14	15	16	17	18	19	20	21	22	23	24	25	26	27	28	29	30	31

Apr	Su	M	Tu	W	Th	F	Sa	Su	M	Tu	W	Th	F	Sa	Su	M	Tu	W	Th	F	Sa	Su	M	Tu	W	Th	F	Sa	Su	M
2018	1	2	3	4	5	6	7	8	9	10	11	12	13	14	15	16	17	18	19	20	21	22	23	24	25	26	27	28	29	30


May	Tu	W	Th	F	Sa	Su	M	Tu	W	Th	F	Sa	Su	M	Tu	W	Th	F	Sa	Su	M	Tu	W	Th	F	Sa	Su	M	Tu	W	Th
2018	1	2	3	4	5	6	7	8	9	10	11	12	13	14	15	16	17	18	19	20	21	22	23	24	25	26	27	28	29	30	31

June	F	Sa	Su	M	Tu	W	Th	F	Sa	Su	M	Tu	W	Th	F	Sa	Su	M	Tu	W	Th	F	Sa	Su	M	Tu	W	Th	F	Sa
2018	1	2	3	4	5	6	7	8	9	10	11	12	13	14	15	16	17	18	19	20	21	22	23	24	25	26	27	28	29	30

Jul	Su	M	Tu	W	Th	F	Sa	Su	M	Tu	W	Th	F	Sa	Su	M	Tu	W	Th	F	Sa	Su	M	Tu	W	Th	F	Sa	Su	M	Tu
2018	1	2	3	4	5	6	7	8	9	10	11	12	13	14	15	16	17	18	19	20	21	22	23	24	25	26	27	28	29	30	31

Aug	W	Th	F	Sa	Su	M	Tu	W	Th	F	Sa	Su	M	Tu	W	Th	F	Sa	Su	M	Tu	W	Th	F	Sa	Su	M	Tu	W	Th	F
2018	1	2	3	4	5	6	7	8	9	10	11	12	13	14	15	16	17	18	19	20	21	22	23	24	25	26	27	28	29	30	31

Sep	Sa	Su	M	Tu	W	Th	F	Sa	Su	M	Tu	W	Th	F	Sa	Su	M	Tu	W	Th	F	Sa	Su							
2018	1	2	3	4	5	6	7	8	9	10	11	12	13	14	15	16	17	18	19	20	21	22	23	24	25	26	27	28	29	30

 Low season  Reserved



Vacation rental
Kassel Region - Hesse
"Ferienwohnung Gisela"

8
[Book now](#)

Availability calendar - from : september 2018



Oct	M	Tu	W	Th	F	Sa	Su	M	Tu	W	Th	F	Sa	Su	M	Tu	W	Th	F	Sa	Su	M	Tu	W							
2018	1	2	3	4	5	6	7	8	9	10	11	12	13	14	15	16	17	18	19	20	21	22	23	24	25	26	27	28	29	30	31
	-	-	-	-	-	-	-	-	-	-	-	-	-	-	-	-	-	-	-	-	-	-	-	-	-	-	-	-	-	-	

Nov	Th	F	Sa	Su	M	Tu	W	Th	F	Sa	Su	M	Tu	W	Th	F	Sa	Su	M	Tu	W	Th	F							
2018	1	2	3	4	5	6	7	8	9	10	11	12	13	14	15	16	17	18	19	20	21	22	23	24	25	26	27	28	29	30
	-	-	-	-	-	-	-	-	-	-	-	-	-	-	-	-	-	-	-	-	-	-	-	-	-	-	-	-	-	

 Low season  Reserved

[Month : Next >>](#)

Rental rates - Bungalow - from 1 to 8 Person(s)

Rates	Night	Weekend	week	2 weeks	Month
 Low season	\$26*	-	-	-	-
 High season	\$29*	-	-	-	-

[Book now](#)

Booking conditions

- **Reservation**
→ Payment made upon reservation : 10% of rental sum
→ Payment balance : 1 month before the stay
- **rentals**
→ Service charges included
→ Cleaning charge levy on departure : \$29*
→ Anticipated supplement for :
- hammam, sauna

[▶ Book now](#)

[▶ Contact the owner](#)

Accepted methods of payment

- Bank transfer (wire) • Cash

Contact directly the property owners

www.iha.com
Advert No.
68301
[>> Book now <<](#)

Contact

Spoken languages 

* Converted at the rate indicated : €100 = \$117.29 = £89.59

Advert No. 68301

www.iha.com

