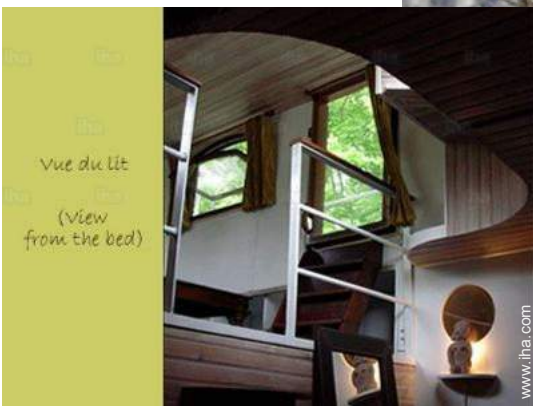


Vacation rental

Issy les Moulineaux

"Le Studio sur la Péniche"

Living on a houseboat in Paris time of your vacation, for an unusual and romantic stay and for a discovery of the riverine habitat



Barge - Houseboat of 130' (40 meters),
separate entrance, at berth

Setting : nautical, romantic

Capacity : from 2 to 3 person(s)

Bedroom(s) : 1

Room(s) : 2



Clé vacances (3 keys)

Issy les Moulineaux - Upper Seine (92) - Île de France

France

Reservation : +33 (0) 1 75 49 60 44 (France)

Advert No. 41525

www.ihacom



Vacation rental



Barge - Houseboat of 130' (40 meters), separate entrance, at berth

- **Ideal for honeymoon, couples**
- **View :** panoramic, unobscured, not overlooked, river, harbour, fantastic sunset
- **Setting :** nautical, romantic
- **Exposure :** South-west

" The studio is the stern Castle, it means the cabin where lived the sailors from a barge Freyssinet. At the top level, in the wheelhouse (the steering position), lies the kitchenette; at the intermediate level is a lounge-berth, and at the lower level are the bunk room and bathroom (bathtub shoe). The intermediate and lower levels are separated by a railing. The lounge, you can admire the sunsets, and the patio above the lounge, enjoy again, away from the reeds, the environment. A barbecue is at your disposal as well as (deposit required) a canoe and bikes. A heat pump you guarantee the best heating throughout the year and you will never feel moisture on the boat. The ship is permanently inhabited by its owner who will welcome you as in a guest room, although it is for a vacation rental. "

Assets

- **Parking :**
Parking uncovered : off road.

Surroundings & location



City



Culture

" The environment is very green (although the boat is in urban areas), and shops (including an Auchan store) are nearby. Swans and geese often come to greet us, and instead of seeing cars pass in front of your windows, you will see the rowers. You can walk to Saint-Cloud and the Ile Saint Germain parks and beautiful walks along the Seine. You can reach very easily, by public transport (from Les Moulineaux station which is 200 metres away), and velib, autolib attractions Parisians, as well as the Château de Versailles. If you come by car, you will always find the place before the boat, for your car. A pony club, the heliport of Paris, and an Aquaboulevard are also nearby. "

Leisure

- **Leisure activities less than 12 miles :**

Bathing, water skiing, canoeing, tennis, squash, pony club, horse trekking

- **Attractions and relaxation :**

Bar/pub, restaurant, movie theater, park and garden, leisure park, theater

Surroundings

- **Locality :**

Public swimming pool 0.5mi.
Public tennis court 0.62mi.
River <165'

- **Amenities :**

Downtown
Bus stop / bus station
Streetcar system
Car rental
Breadstore
Caterer
Local stores
Supermarket
High class retailers
Hairdressing salon
Mail office
Bank
ATM
Drugstore
Doctor
Nurse



view from the veranda



vue du lit
(view from the bed)

view from the bedroom



view from the bedroom

Interior

- **Receive up to :**
from 2 to 3 person(s) (2 adults, 1 kids)
- **Liveable floor area :**
270 Sq.ft.
- **Interior layout :**
2 Room(s), 1 bedroom(s), sleeping den, 1 bathroom, 1 toilets, living room 100 Sq.ft., sitting room 100 Sq.ft., kitchenette, dining area, tv den, patio, veranda, loggia
- **Sleeps - bed(s) :**
1 full bed(s), 1 twin storage bed 1 pers
- **Guest facilities :**
T.V., movie collection, wifi, Hanging wardrobe, mobile cool air fan, central heating, Glazed in area, Drapes, entry phone system
- **Appliances :**
Crockery/flatware, cafetiere, electric coffee maker, electric kettle, toaster, electric hobs, micro-wave oven, refridgerator, vacuum cleaner

Exterior

- **Ground surface :**
< 1,076 Sq.ft.
- **Outside accommodation :**
Terrace, covered terrace, roof terrace, balcony, sundeck
- **Outside setting :**
Landscaped yard, river
- **Outside amenities :**
Parasol, yard seated area, sun recliner(s), hammock(s)



view from the sitting-room

Services

- **washing :**
Sheets, Towels, Linen, Comforter(s), Comforter(s), Pillows
- **Single family home :**
Cleaning on departure, Caretaker/concierge, Parking

For your guidance

- **For your guidance**
No kids under 3 years old
Pets accepted under certain conditions (ask the owner)
Water : hot/cold
Local voltage supply : 220-240V / 50Hz
Electricity supply : mains



view from the kitchen

Floor plan

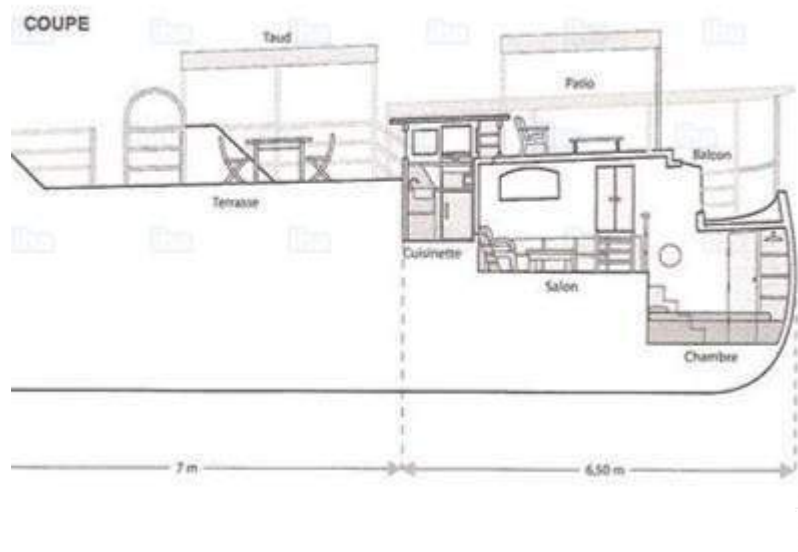


Photo album - 1



view from the bedroom



view from the veranda



view from the bedroom

Photo album - 2



view from the kitchen



view from the sitting-room



view from the bedroom

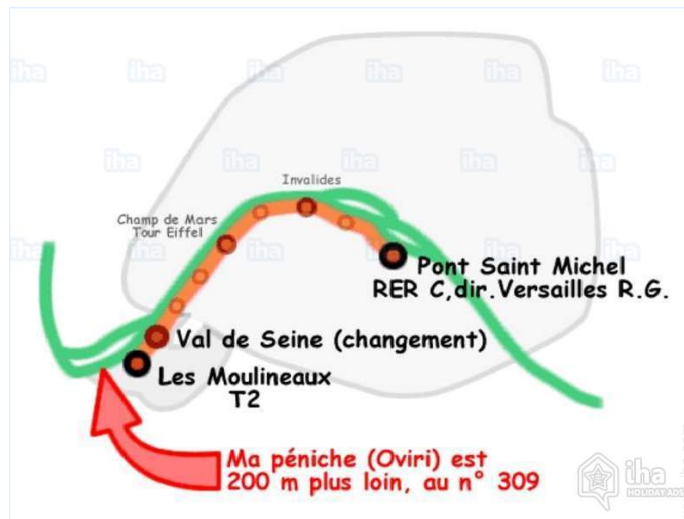


view from the bedroom



view from the balcony

Route map



Location & Access

" Very close to the Porte de Versailles and the 15th arrondissement, the barge is located in the small arm of the island Saint Germain Seine. This small arm being not frequented by large vessels, there is never pitch and you are not likely to have seasickness. "



GPS coordinates in degrees, minutes, seconds: Latitude 48° 49'13"N - Longitude 2° 14'38"E ([Dwelling](#))

Address

→ 309 quai de Stalingrad
péniche Oviri
92130 Issy les Moulineaux

• Railroad station Issy

→ Issy les Moulineaux, Upper Seine, Île de France, France
→ Distance : 660'
→ Time : 5'

• Airport Paris Charles de Gaulle

→ Paris, Paris, Île de France, France
→ Distance : 18.5mi.

• Bus station Les Moulineaux

→ Issy les Moulineaux, Upper Seine, Île de France, France
→ Distance : 660'
→ Time : 5'

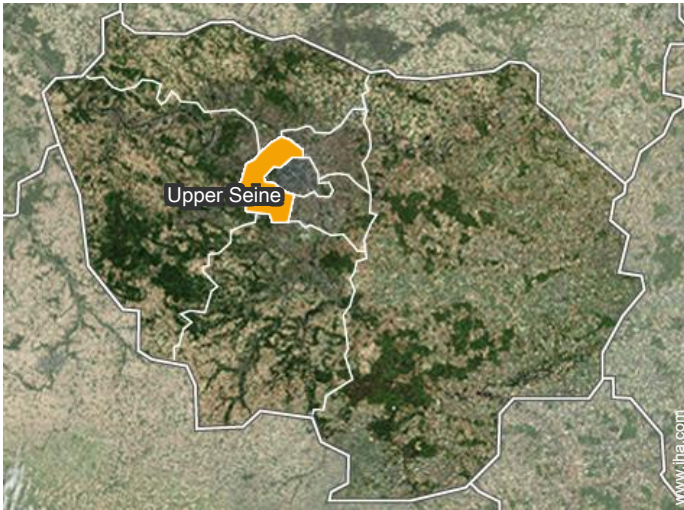
- Boulogne Billancourt : (1.25mi.)
- Paris 15th district : (2.5mi.)
- Meudon : (0.93mi.)

Contact

Spoken languages



Location



Vacation rental
Issy les Moulineaux - France
"Le Studio sur la Péniche"

Availability calendar - from : september 2017

Sep	F	Sa	Su	M	Tu	W	Th	F	Sa	Su	M	Tu	W	Th	F	Sa	Su	M	Tu	W	Th	F	Sa								
2017	1	2	3	4	5	6	7	8	9	10	11	12	13	14	15	16	17	18	19	20	21	22	23	24	25	26	27	28	29	30	
																						-	-	-	-	-	-	-	-	-	
Oct	Su	M	Tu	W	Th	F	Sa	Su	M	Tu	W	Th	F	Sa	Su	M	Tu	W	Th	F	Sa	Su	M	Tu	W	Th	F	Sa	Su	M	Tu
2017	1	2	3	4	5	6	7	8	9	10	11	12	13	14	15	16	17	18	19	20	21	22	23	24	25	26	27	28	29	30	31
	-	-	-	-	-	-	-	-	-	-	-	-	-	-	-	-	-	-	-	-	-	-	-	-	-	-	-	-	-	-	-
Nov	W	Th	F	Sa	Su	M	Tu	W	Th	F	Sa	Su	M	Tu	W	Th	F	Sa	Su	M	Tu	W	Th	F	Sa	Su	M	Tu	W	Th	
2017	1	2	3	4	5	6	7	8	9	10	11	12	13	14	15	16	17	18	19	20	21	22	23	24	25	26	27	28	29	30	
	-	-	-	-	-	-	-	-	-	-	-	-	-	-	-	-	-	-	-	-	-	-	-	-	-	-	-	-	-	-	-
Dec	F	Sa	Su	M	Tu	W	Th	F	Sa	Su	M	Tu	W	Th	F	Sa	Su	M	Tu	W	Th	F	Sa	Su	M	Tu	W	Th	F	Sa	Su
2017	1	2	3	4	5	6	7	8	9	10	11	12	13	14	15	16	17	18	19	20	21	22	23	24	25	26	27	28	29	30	31
	-	-	-	-	-	-	-	-	-	-	-	-	-	-	-	-	-	-	-	-	-	-	-	-	-	-	-	-	-	-	-
Jan	M	Tu	W	Th	F	Sa	Su	M	Tu	W	Th	F	Sa	Su	M	Tu	W	Th	F	Sa	Su	M	Tu	W	Th	F	Sa	Su	M	Tu	W
2018	1	2	3	4	5	6	7	8	9	10	11	12	13	14	15	16	17	18	19	20	21	22	23	24	25	26	27	28	29	30	31
	-	-	-	-	-	-	-	-	-	-	-	-	-	-	-	-	-	-	-	-	-	-	-	-	-	-	-	-	-	-	-
Feb	Th	F	Sa	Su	M	Tu	W	Th	F	Sa	Su	M	Tu	W	Th	F	Sa	Su	M	Tu	W	Th	F	Sa	Su	M	Tu	W			
2018	1	2	3	4	5	6	7	8	9	10	11	12	13	14	15	16	17	18	19	20	21	22	23	24	25	26	27	28			
	-	-	-	-	-	-	-	-	-	-	-	-	-	-	-	-	-	-	-	-	-	-	-	-	-	-	-	-	-	-	
Mar	Th	F	Sa	Su	M	Tu	W	Th	F	Sa	Su	M	Tu	W	Th	F	Sa	Su	M	Tu	W	Th	F	Sa	Su	M	Tu	W	Th	F	Sa
2018	1	2	3	4	5	6	7	8	9	10	11	12	13	14	15	16	17	18	19	20	21	22	23	24	25	26	27	28	29	30	31
	-	-	-	-	-	-	-	-	-	-	-	-	-	-	-	-	-	-	-	-	-	-	-	-	-	-	-	-	-	-	-
Apr	Su	M	Tu	W	Th	F	Sa	Su	M	Tu	W	Th	F	Sa	Su	M	Tu	W	Th	F	Sa	Su	M	Tu	W	Th	F	Sa	Su	M	
2018	1	2	3	4	5	6	7	8	9	10	11	12	13	14	15	16	17	18	19	20	21	22	23	24	25	26	27	28	29	30	
	-	-	-	-	-	-	-	-	-	-	-	-	-	-	-	-	-	-	-	-	-	-	-	-	-	-	-	-	-	-	
May	Tu	W	Th	F	Sa	Su	M	Tu	W	Th	F	Sa	Su	M	Tu	W	Th	F	Sa	Su	M	Tu	W	Th	F	Sa	Su	M	Tu	W	Th
2018	1	2	3	4	5	6	7	8	9	10	11	12	13	14	15	16	17	18	19	20	21	22	23	24	25	26	27	28	29	30	31
	-	-	-	-	-	-	-	-	-	-	-	-	-	-	-	-	-	-	-	-	-	-	-	-	-	-	-	-	-	-	-
June	F	Sa	Su	M	Tu	W	Th	F	Sa	Su	M	Tu	W	Th	F	Sa	Su	M	Tu	W	Th	F	Sa	Su	M	Tu	W	Th	F	Sa	
2018	1	2	3	4	5	6	7	8	9	10	11	12	13	14	15	16	17	18	19	20	21	22	23	24	25	26	27	28	29	30	
	-	-	-	-	-	-	-	-	-	-	-	-	-	-	-	-	-	-	-	-	-	-	-	-	-	-	-	-	-	-	-

Vacation rental
Île de France - Issy les Moulineaux
"Le Studio sur la Péniche"

10
[Book now](#)



Availability calendar - from : june 2018

Jul	Su	M	Tu	W	Th	F	Sa	Su	M	Tu	W	Th	F	Sa	Su	M	Tu	W	Th	F	Sa	Su	M	Tu							
2018	1	2	3	4	5	6	7	8	9	10	11	12	13	14	15	16	17	18	19	20	21	22	23	24	25	26	27	28	29	30	31
-	-	-	-	-	-	-	-	-	-	-	-	-	-	-	-	-	-	-	-	-	-	-	-	-	-	-	-	-	-	-	

Aug	W	Th	F	Sa	Su	M	Tu	W	Th	F	Sa	Su	M	Tu	W	Th	F	Sa	Su	M	Tu	W	Th	F							
2018	1	2	3	4	5	6	7	8	9	10	11	12	13	14	15	16	17	18	19	20	21	22	23	24	25	26	27	28	29	30	31
-	-	-	-	-	-	-	-	-	-	-	-	-	-	-	-	-	-	-	-	-	-	-	-	-	-	-	-	-	-	-	

[Month : Next >>](#)

Rental rates - Barge - Houseboat - from 2 to 3 Person(s)

Rates	Night	Weekend	week	2 weeks	Month
 Low season	\$164* ↓ > 3	-	\$1026* (Saturday)	-	-
 High season	\$176* > 3	-	\$1108* (Saturday)	-	-

↓ Reducing rates (Check-in day) > Minimum Night

[Book now](#)

Booking conditions

• Reservation

- Payment made upon reservation : 50% of rental sum
- Payment balance : on handing over the keys
- Deposit required : \$352*

• rentals

- Service charges included
- Day tax included
- Cleaning charge on departure included

[▶ Book now](#)

[▶ Contact the owner](#)

Accepted methods of payment

• PayPal • Cash

Contact directly the property owners

www.iha.com
Advert No.
41525
[>> Book now <<](#)

Contact

Spoken languages



* Converted at the rate indicated : €100 = \$117.29 = £89.59

Advert No. 41525

www.iha.com



[>> VACATION HOMES](#)

DIRECT BY OWNERS